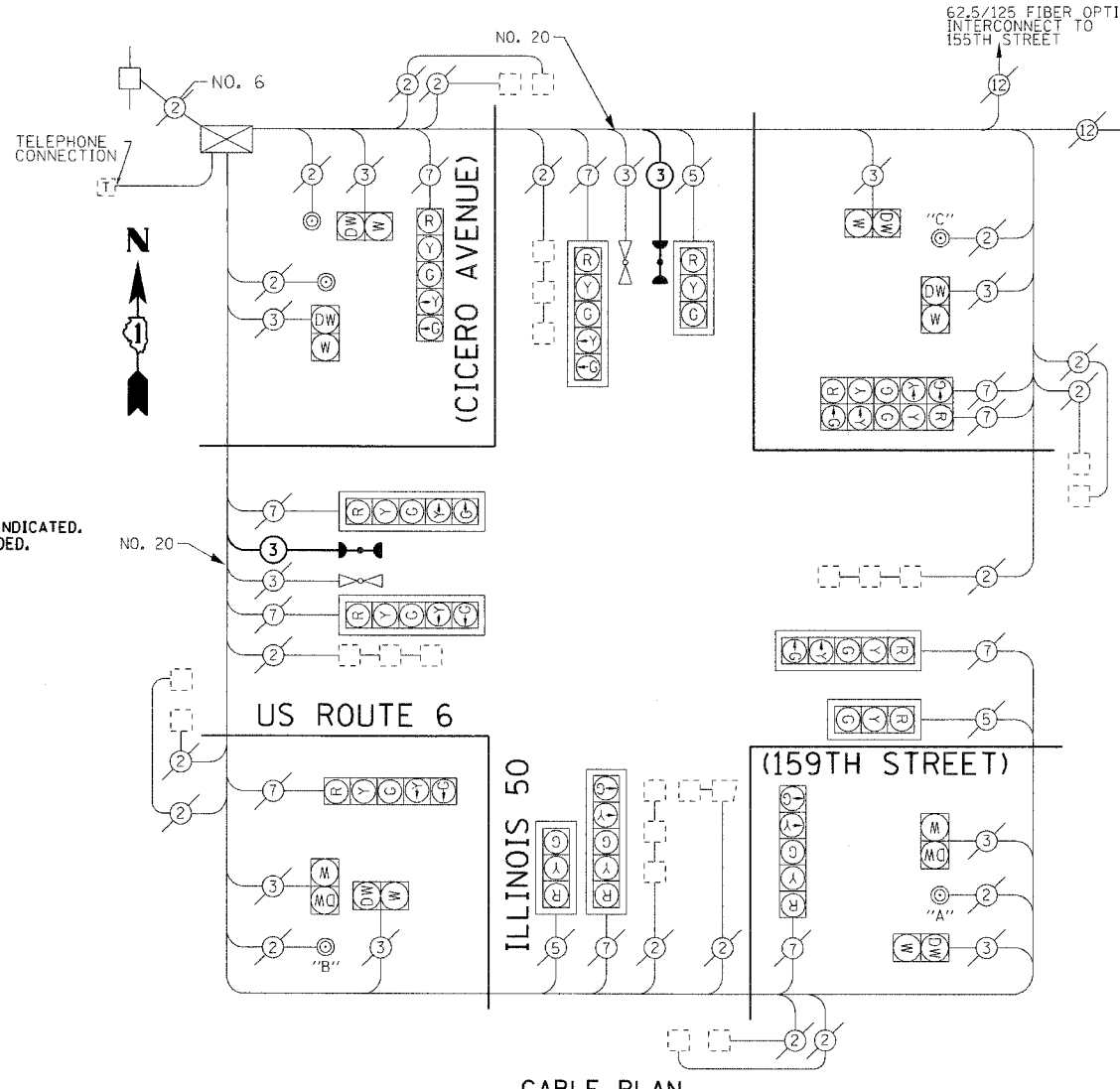


F.A. RTE.	SECTION	COUNTY	TOTAL SHEETS	SHEET NO.
	08-00146-00-TL	COOK	273	214
STA.	TO STA.			
FED. ROAD DIST. NO.	ILLINOIS	FED. AID PROJECT	M-8003 (867)	
CONTRACT NO. 63033				

CABLE PLAN LEGEND

- | EXISTING | PROPOSED | |
|----------|----------|--|
| | | 8" (200mm) TRAFFIC SIGNAL SECTION |
| | | 12" (300mm) TRAFFIC SIGNAL SECTION |
| | | 12" (300mm) PEDESTRIAN SIGNAL SECTION |
| | | 12" (300mm) PEDESTRIAN SIGNAL SECTION |
| | | CONTROLLER CABINET |
| | | SERVICE INSTALLATION |
| | | TELEPHONE CONNECTION |
| | | VEHICLE DETECTOR, INDUCTION LOOP |
| | | MAGNETIC DETECTOR |
| | | EMERGENCY VEHICLE LIGHT DETECTOR |
| | | CONFIRMATION BEACON |
| | | PUSHBUTTON DETECTOR |
| | | DENOTES NUMBER OF CONDUCTORS. ALL EXISTING CABLE NO. 14 EXCEPT AS INDICATED. ALL LOOP DETECTOR CABLE TO BE SHIELDED. |
| | | GROUND CABLE IN CONDUIT, NO. 6 SOLID COPPER (GREEN) |
| | | FIBER OPTIC CABLE IN CONDUIT, NO. 62.5/125 2-MM12F SM12F |
| | | SIGNAL FACE WITH BACKPLATE. "P" INDICATES PROGRAMMED HEAD |
| | | RAILROAD CONTROL CABINET |
| | | ILLUMINATED SIGN, "NO LEFT TURN" |
| | | ILLUMINATED SIGN, "NO RIGHT TURN" |
| | | GROUND CABLE IC NO. 6 |
| | | GROUND ROD AT HANDHOLE (H), DOUBLE HANDHOLE (H), OR CONTROLLER (C) |
| | | GROUND ROD AT POST (P), OR MAST ARM POLE (MA) |
| | | GROUND ROD AT ELECTRIC SERVICE INSTALLATION |
| | | LUMINAIRE |



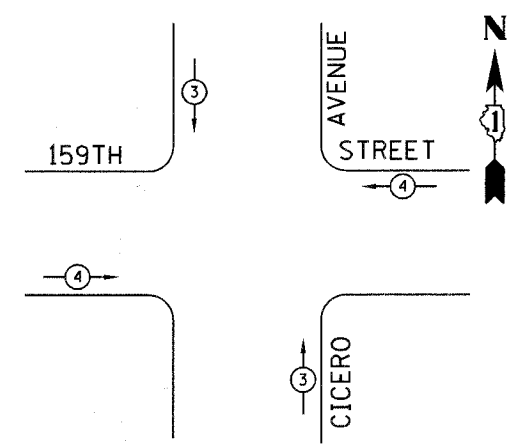
CABLE PLAN

PUSH BUTTON "A" SHALL PLACE CALLS IN PHASES 2 & 4
 PUSH BUTTON "B" SHALL PLACE CALLS IN PHASES 4 & 6
 PUSH BUTTON "C" SHALL PLACE CALLS IN PHASES 2 & 8

SCHEDULE OF QUANTITIES

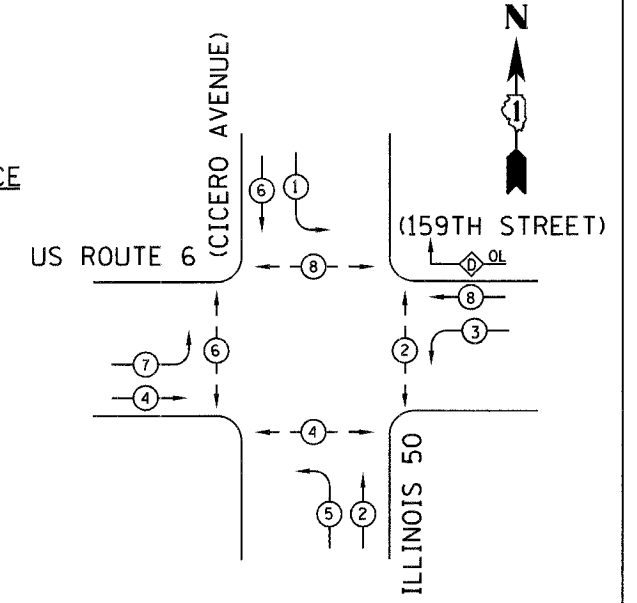
PAY ITEM	UNIT	QUANTITY
ELECTRIC CABLE IN CONDUIT, SIGNAL, NO. 14 3C	FOOT	314
CONFIRMATION BEACON	EACH	2
MAINTENANCE OF EXISTING TRAFFIC SIGNAL INSTALLATION	EACH	1

EMERGENCY VEHICLE PREEMPTION SEQUENCE



PROPOSED EMERGENCY VEHICLE PREEMPTION		
EMERGENCY VEHICLE PREEMPTION	3	4
MOVEMENT	↓ ↑	← →

CONTROLLER SEQUENCE



PHASE DESIGNATION DIAGRAM

OVERLAP LETTER	PERMISSIVE PHASE	PROTECTED PHASE	DISPLAY
D	=	8 +	1 - 8

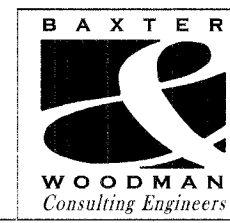
LEGEND

- DUAL ENTRY PHASE
- SINGLE ENTRY PHASE
- OVERLAP
- PEDESTRIAN PHASE
- NUMBER REFERS TO ASSOCIATED PHASE

CITY OF OAK FOREST
 LOCATION NO. 103

ILLINOIS DEPARTMENT OF TRANSPORTATION
 CABLE PLAN,
 EMERGENCY VEHICLE PREEMPTION
 SEQUENCE OF OPERATION,
 PHASE DESIGNATION DIAGRAM &
 TRAFFIC SIGNAL SEQUENCE OF OPERATIONS
 US ROUTE 6 & CICERO AVENUE

SCALE: NONE
 DATE: 01-02-08
 DRAWN BY: MAC
 CHECKED BY: LDH



REVISIONS	
NAME	DATE

COPYRIGHT © 2007 BY BAXTER & WOODMAN, INC.
 STATE OF ILLINOIS - PROFESSIONAL DESIGN FIRM
 LICENSE NO. 081-00127 - EXPIRES 4/30/2009
 PROJECT NO. 08-00146-00-TL-103
 DRAWING NO. 103-01-001
 DATE: 01-02-08