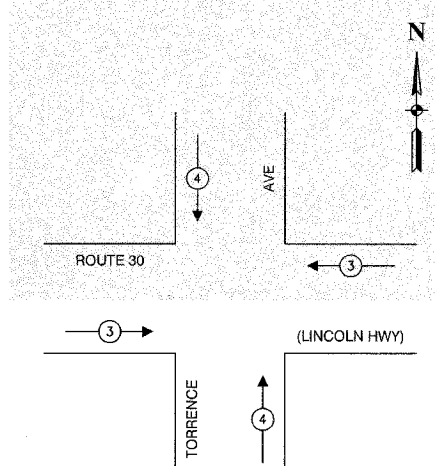
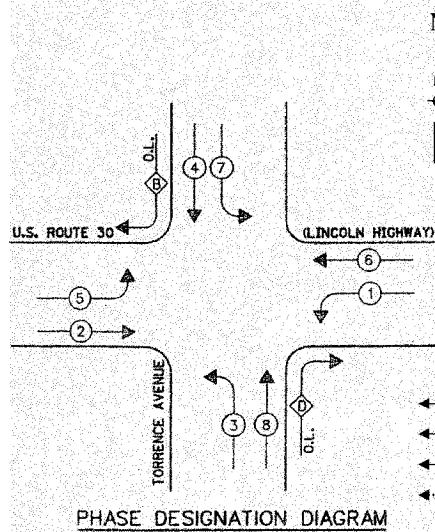
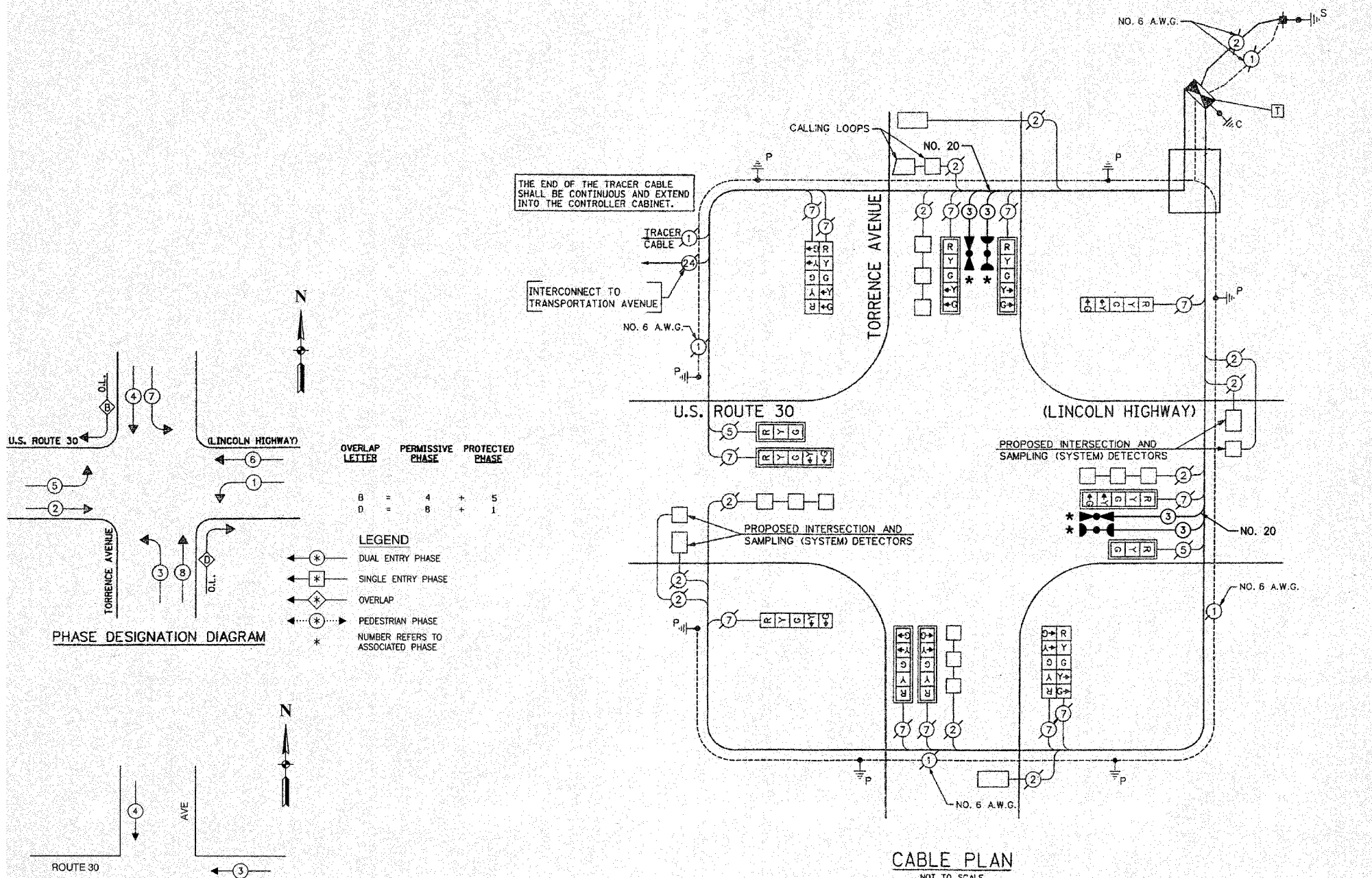


F. A. NO.	SECTION	COUNTY	TOTAL SHEETS	SHEET NO.
	08-00146-00-TL	COOK	273	237
STA.	TO STA.			
FED. ROAD DIST. NO.	SUPPLEMENT	FED. AID PROJECT		

CONTRACT NO. 63003



EMERGENCY VEHICLE PREEMPTION SEQUENCE

PROPOSED EMERGENCY VEHICLE PREEMPTORS		
EMERGENCY VEHICLE PREEMPTOR	3	4
MOVEMENT	←	↑

OVERLAP LETTER PERMISSIVE PHASE PROTECTED PHASE

B = 4 + 5
D = 8 + 1

LEGEND

- * DUAL ENTRY PHASE
- * SINGLE ENTRY PHASE
- * OVERLAP
- * PEDESTRIAN PHASE
- * NUMBER REFERS TO ASSOCIATED PHASE

SCHEDULE OF QUANTITIES

PAY ITEM	UNIT	QUANTITY
MAINTENANCE OF EXISTING TRAFFIC SIGNAL INSTALLATION	EACH	1
ELECTRIC CABLE IN CONDUIT, SIGNAL NO. 14 3C	FOOT	331
LIGHT DETECTOR	EACH	2
LIGHT DETECTOR AMPLIFIER	EACH	1
ELECTRIC CABLE IN CONDUIT NO. 20 3/C, TWISTED, SHIELDED	FOOT	331

NOTE

* 1. THIS PLAN IS FOR THE PURPOSE OF INSTALLING EMERGENCY VEHICLE PREEMPTION EQUIPMENT AS SHOWN PER PLAN INDICATED IN THE SCHEDULE OF QUANTITIES. ALL OTHER EQUIPMENT SHOWN SHALL BE DISREGARDED.

CABLE PLAN LEGEND

EXISTING	PROPOSED	DESCRIPTION
(G)	(G)	8" TRAFFIC SIGNAL SECTION
(R)	(R)	12" TRAFFIC SIGNAL SECTION
(W)	(W)	12" PEDESTRIAN SIGNAL SECTION
(P)	(P)	12" PEDESTRIAN SIGNAL SECTION
(C)	(C)	CONTROLLER CABINET
(S)	(S)	SERVICE INSTALLATION
(T)	(T)	TELEPHONE CONNECTION
(M)	(M)	MAGNETIC DETECTOR
(E)	(E)	EMERGENCY VEHICLE LIGHT DETECTOR
(B)	(B)	CONFIRMATION BEACON
(D)	(D)	PUSHBUTTON DETECTOR
(V)	(V)	VEHICLE DETECTOR, INDUCTION LOOP
(2)	(2)	DENOTES NUMBER OF CONDUCTORS. ALL CABLE NO. 14 EXCEPT AS INDICATED. ALL LOOP DETECTOR CABLE TO BE SHIELDED.
(S)	(S)	SIGNAL FACE WITH BACKPLATE
(P)	(P)	"P" INDICATES PROGRAMMED HEAD
(R)	(R)	RAILROAD CONTROL CABINET
(L)	(L)	ILLUMINATED SIGN, FIBER OPTIC "NO LEFT TURN"
(R)	(R)	ILLUMINATED SIGN, FIBER OPTIC "NO RIGHT TURN"
(H/C)	(H/C)	GROUND ROD AT HANDHOLE, DOUBLE HANDHOLE, OR CONTROLLER
(P)	(P)	GROUND ROD AT POST OR MAST ARM POLE
(S)	(S)	GROUND ROD AT ELECTRIC SERVICE INSTALLATION

VILLAGE OF SAUK VILLAGE
LOCATION NO. 114

ILLINOIS DEPARTMENT OF TRANSPORTATION

PROPOSED EMERGENCY VEHICLE PREEMPTION CABLE PLAN, PHASE DESIGNATION DIAGRAM & SCHEDULE OF QUANTITIES
ROUTE 30 & TORRENCE AVENUE

SCALE: VERT. _____
HORIZ. _____

DATE _____ DRAWN BY _____
CHECKED BY _____

* PLANS MODIFIED BY ROBINSON ENGINEERING, LTD

REVISIONS	
NAME	DATE
ADDED EV PREEMPTION	01/02/08