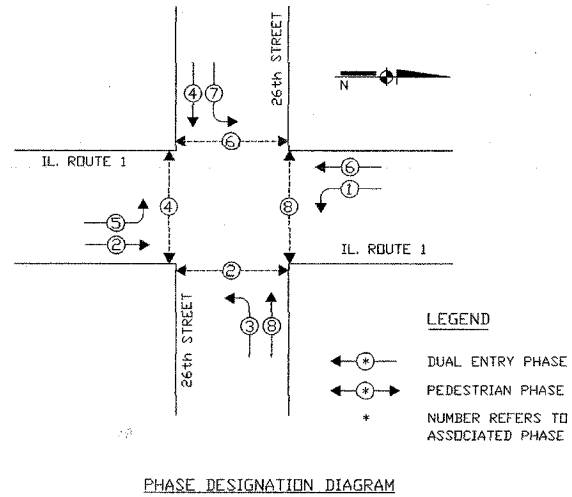
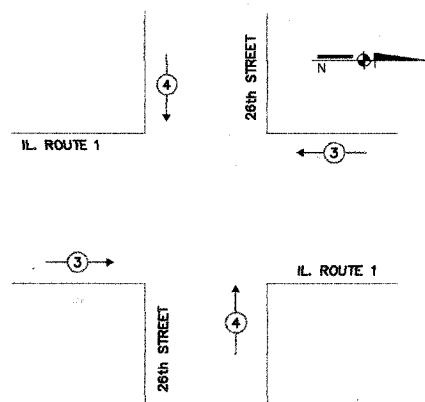


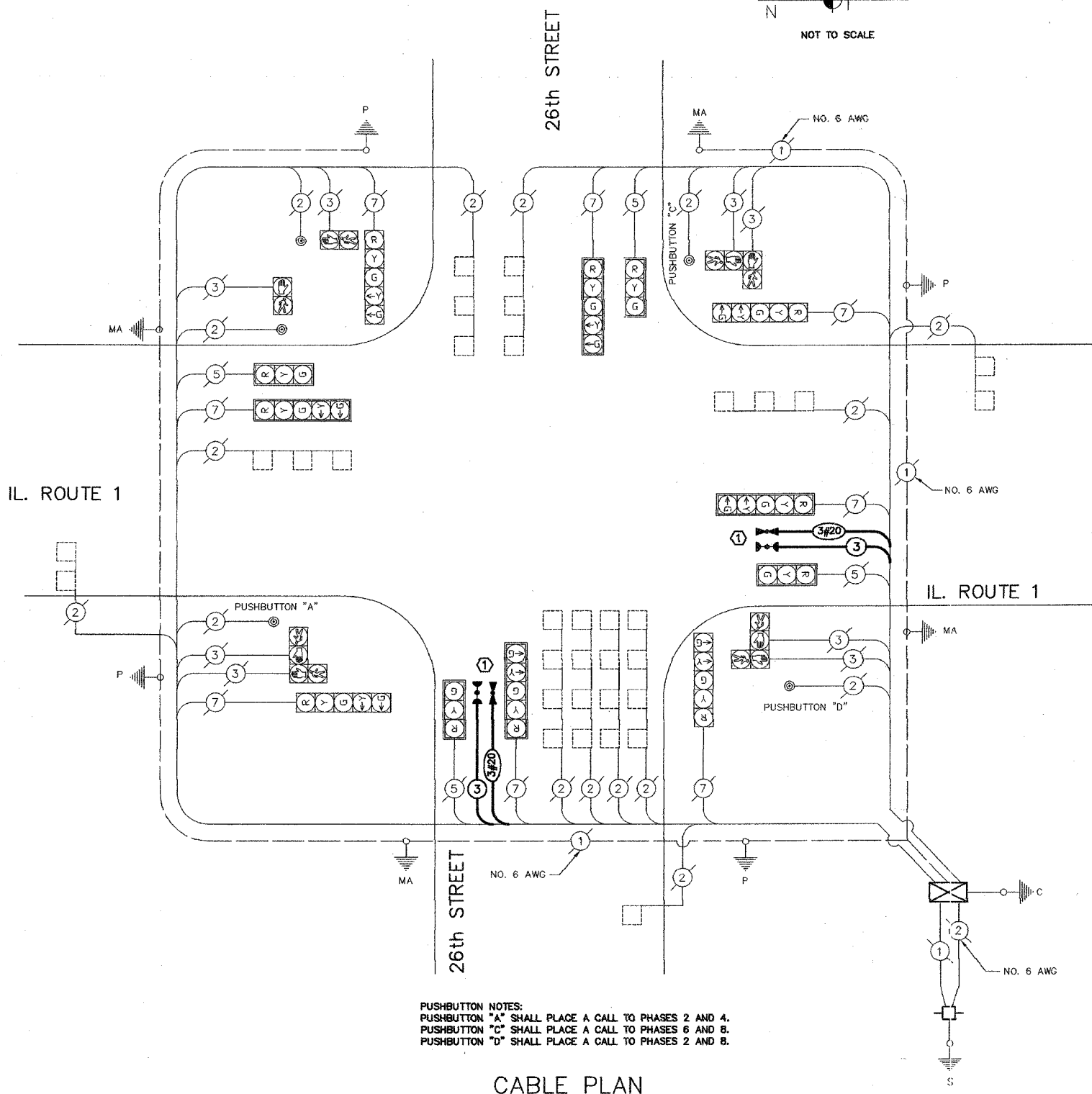
EXISTING CONTROLLER SEQUENCE



EMERGENCY VEHICLE PREEMPTION SEQUENCE



PROPOSED EMERGENCY VEHICLE PREEMPTORS		
EMERGENCY VEHICLE PREEMPTORS	3	4
MOVEMENT	←→	↑↓



PUSHBUTTON NOTES:
 PUSHBUTTON "A" SHALL PLACE A CALL TO PHASES 2 AND 4.
 PUSHBUTTON "C" SHALL PLACE A CALL TO PHASES 6 AND 8.
 PUSHBUTTON "D" SHALL PLACE A CALL TO PHASES 2 AND 8.

CABLE PLAN

MODIFIED BY JOSEPH SCHUDT and ASSOCIATES

NOTES:
 ① THIS PLAN IS FOR THE PURPOSE OF INSTALLING EMERGENCY VEHICLE PREEMPTION EQUIPMENT AS SHOWN PER PLAN INDICATED IN THE SCHEDULE OF QUANTITIES. ALL OTHER EQUIPMENT SHOWN SHALL BE DISREGARDED.

CABLE PLAN LEGEND

- | EXISTING | PROPOSED | |
|----------|----------|---|
| | | 8' TRAFFIC SIGNAL SECTION |
| | | 12' TRAFFIC SIGNAL SECTION |
| | | 12' PEDESTRIAN SIGNAL SECTION |
| | | 12' PEDESTRIAN SIGNAL SECTION |
| | | CONTROLLER CABINET |
| | | SERVICE INSTALLATION |
| | | TELEPHONE INSTALLATION |
| | | VEHICLE DETECTOR, INDUCTION LOOP |
| | | MAGNETIC DETECTOR |
| | | EMERGENCY VEHICLE LIGHT DETECTOR |
| | | CONFIRMATION BEACON |
| | | PUSHBUTTON DETECTOR |
| | | DENOTES NUMBER OF CONDUCTORS.
ALL CABLE NO. 14 EXCEPT AS INDICATED.
ALL LOOP DETECTOR CABLE TO BE SHIELDED. |
| | | SIGNAL FACE WITH BACKPLATE. |
| | | "P" INDICATES PROGRAMMED HEAD. |
| | | RAILROAD CONTROL CABINET |
| | | ILLUMINATED SIGN, FIBER OPTIC
'NO LEFT TURN' |
| | | ILLUMINATED SIGN, FIBER OPTIC
'NO RIGHT TURN' |
| | | GROUND ROD AT HANDHOLE (H),
DOUBLE HANDHOLE (HD),
OR CONTROLLER (C) |
| | | GROUND ROD AT POST
OR MAST ARM POLE |
| | | GROUND ROD AT ELECTRIC
SERVICE INSTALLATION |
| | | GROUND CABLE IN CONDUIT
NO. 6 SOLID COPPER (GREEN) |
| | | FIBER OPTIC CABLE IN CONDUIT
NO. 62.5/125 2-MM12F & SM12F |

SCHEDULE OF QUANTITIES

Pay Item	Unit	Quantity
Maintenance of Existing Traffic Signal Installation	Each	1
Electric Cable in Conduit, Signal No. 14, 3c	Meter	77.7
Light Detector	Each	4
Light Detector Amplifier	Each	1
Electric Cable in Conduit, No. 20, 3c Twisted Shielded	Meter	77.7
Traffic Control and Protection Standard 701701	Each	1

VILLAGE OF SOUTH CHICAGO HEIGHTS
 LOCATION NO 118

REVISIONS		ILLINOIS DEPARTMENT OF TRANSPORTATION EMERGENCY VEHICLE PREEMPTION CABLE PLAN CONTROLLER SEQUENCE SCHEDULE OF QUANTITIES IL. ROUTE 1 AND 26th STREET
NAME	DATE	

SCALE: N.T.S. DRAWN BY: MJD
 DATE: 1/02/08 CHECKED BY: MJD