

F.A.U. RTE.	SECTION	COUNTY	TOTAL SHEETS	SHEET NO.
2426	06-00082-00-PV	DU PAGE	63	1
FED. ROAD DIST. NO.	ILLINOIS	CONTRACT NO. 63015		

STATE OF ILLINOIS
DEPARTMENT OF TRANSPORTATION
DIVISION OF HIGHWAYS

**PLANS FOR
PROPOSED FEDERAL
AID HIGHWAY**

**FAU ROUTE 2426 (SUNSET DRIVE)
SECTION 06-00082-00-PV
WEST OF LINCOLN AVE. TO ADDISON RD.
VILLAGE OF VILLA PARK
RECONSTRUCTION & REHABILITATION
PROJECT M-8003(827)
Du PAGE COUNTY
C-91-327-07**

FOR INDEX OF SHEETS, SEE SHEET NO. 2

TRAFFIC DATA

SUNSET DR. (FAU 2426)
2006 ADT = 2,600
2007 ADT = 2,600

DESIGN SPEED = 30 MPH
POSTED SPEED = 30 MPH

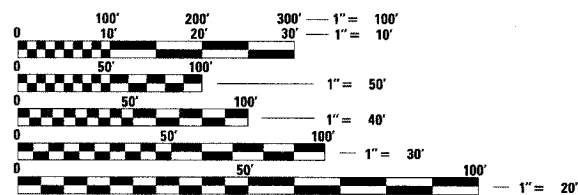
DESIGN DESIGNATION

2600 (07) COLLECTOR 0.07 FD(20)

PROJECT DESCRIPTION

THE PROJECT CONSISTS OF THE RECONSTRUCTION OF SUNSET DRIVE FROM WESTWOOD AVE. TO WESTMORE AVE. AND PAVEMENT PATCHING FROM WESTMORE AVE. TO ADDISON ROAD. ROADWAY CONSTRUCTION INCLUDES EARTHWORK, HMA PAVEMENT RECONSTRUCTION, PCC PAVEMENT PATCHING, CONCRETE CURB & GUTTER, SIDEWALK, DRAINAGE, EROSION CONTROL, AND OTHER APPURTENANT WORK.

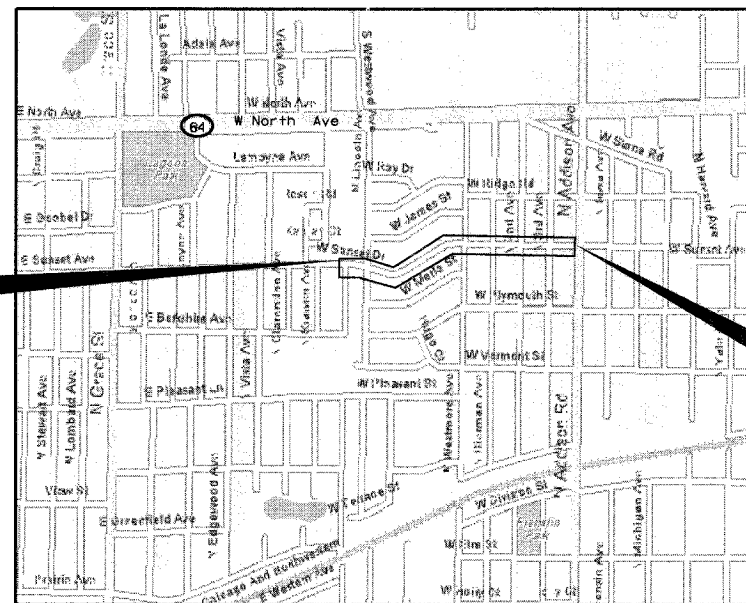
PROJECT IS LOCATED IN THE
VILLAGE OF VILLA PARK



FULL SIZE PLANS HAVE BEEN PREPARED USING STANDARD ENGINEERING SCALES. REDUCED SIZED PLANS WILL NOT CONFORM TO STANDARD SCALES. IN MAKING MEASUREMENTS ON REDUCED PLANS, THE ABOVE SCALES MAY BE USED.

J.U.L.I.E.
JOINT UTILITY LOCATION INFORMATION FOR EXCAVATION
1-800-892-0123
OR 811

PROJECT BEGINS
STA. 127 + 79.1



3RD PRINCIPAL MERIDIAN R 11 E YORK TOWNSHIP

**LOCATION MAP
SCALE**

NOT TO SCALE

GROSS LENGTH OF PROJECT = 3,041 FEET (0.576 MILES)
NET LENGTH OF PROJECT = 3,041 FEET (0.576 MILES)



Thomas M. Walsh
SIGNATURE
FEBRUARY 19, 2008
DATE
11-30-2009
LICENSE EXPIRES



LOCATION OF SECTION INDICATED THUS: - ■ -

STATE OF ILLINOIS
DEPARTMENT OF TRANSPORTATION
DIVISION OF HIGHWAYS

APPROVED FEB. 20 20 08
Diana Juskalis
VILLAGE OF VILLA PARK, DIRECTOR OF PUBLIC WORKS

PASSED APRIL 4 2008
Christopher Holt
DISTRICT 1 ENGINEER OF LOCAL ROADS & STREETS

RELEASING FOR BID
BASED ON LIMITED
REVIEW APRIL 4, 20 08
Diana M. O'Keefe
DEPUTY DIRECTOR OF HIGHWAYS, REGION 1 ENGINEER

**PRINTED BY THE AUTHORITY
OF THE STATE OF ILLINOIS**

FIELD ENGINEER, MARILIN SOLOMON (847) 705-4407

CONTRACT NO. 63015