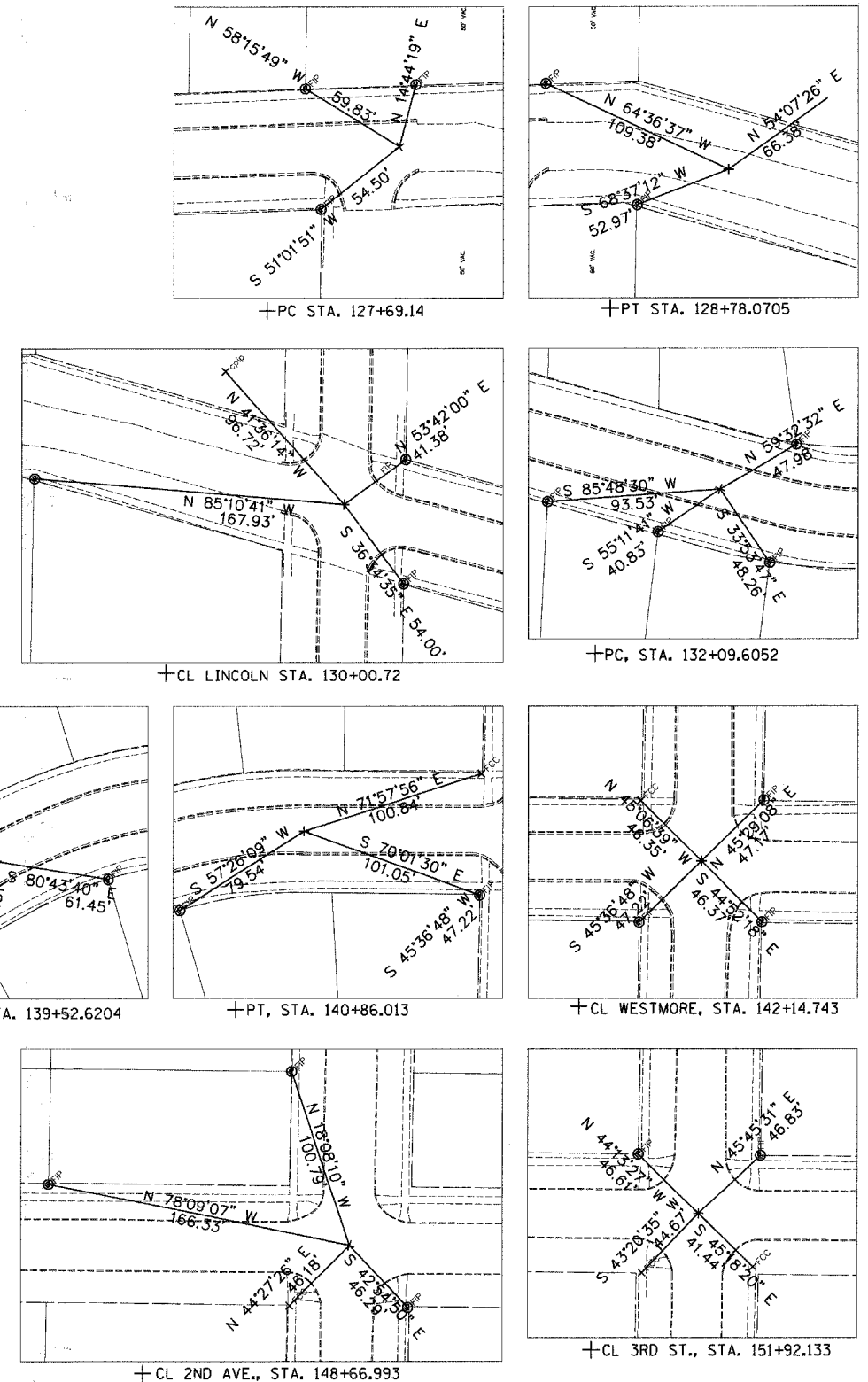


**BENCHMARKS**

1. HYDRANT SE QUAD. LINCOLN & SUNSET, SE B-BOLT, ELEV=725.74
2. FOUND CUT CROSS ON SIDEWALK, @ NW QUAD. LINCOLN & SUNSET, ELEV=724.67
3. HYDRANT NE QUAD WESTMORE & SUNSET, EAST B BOLT, ELEV=713.24
4. HYDRANT NE QUADRANT BIERMAN & SUNSET, EAST B BOLT, ELEV=713.13
5. HYDRANT NE QUAD. 2ND & SUNSET, EAST B BOLT, ELEV=715.56
6. HYDRANT NW QUAD. 3RD & SUNSET, WEST B BOLT, ELEV=715.17
7. HYDRANT SW QUAD. ADDISON & SUNSET, WEST B BOLT, ELEV=714.72

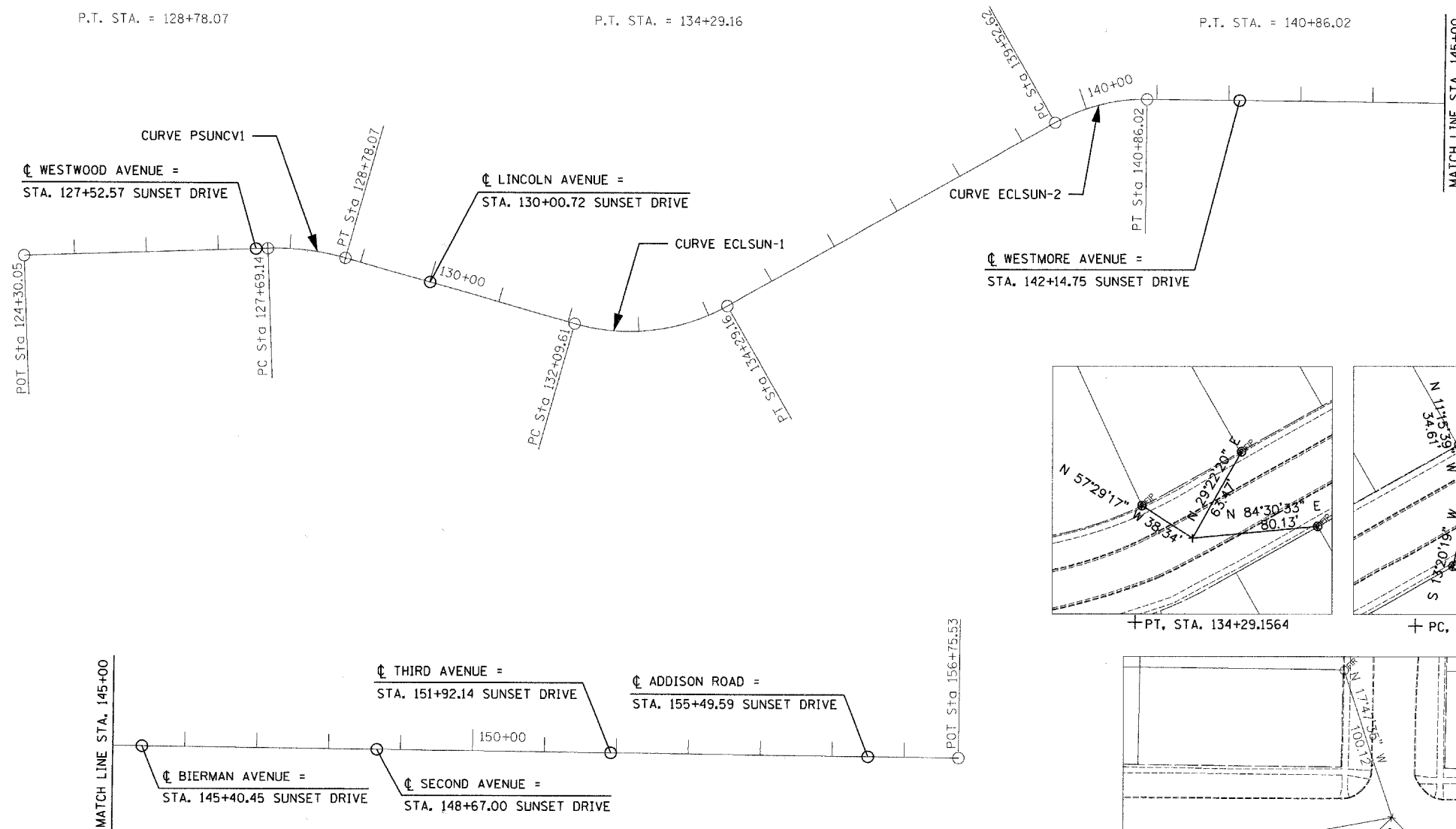
**CONTROL POINTS**



EXIST. CURVE PSUNCV1  
 PI STA. = 128+24.05  
 $\Delta = 17^\circ 49' 56''$  (RT)  
 D = 16° 22' 13"  
 R = 350.00'  
 T = 54.91'  
 L = 108.93'  
 E = 4.28'  
 e = NC  
 T.R. = N/A  
 S.E. RUN = N/A  
 P.C. STA. = 127+69.14  
 P.T. STA. = 128+78.07

EXIST. CURVE ECLSUN-1  
 PI STA. = 133+25.53  
 $\Delta = 45^\circ 27' 32''$  (LT)  
 D = 20° 42' 19"  
 R = 276.72'  
 T = 115.92'  
 L = 219.55'  
 E = 23.30'  
 e = NC  
 T.R. = N/A  
 S.E. RUN = N/A  
 P.C. STA. = 132+09.61  
 P.T. STA. = 134+29.16

EXIST. CURVE ECLSUN-2  
 PI STA. = 140+20.91  
 $\Delta = 30^\circ 14' 06''$  (RT)  
 D = 22° 39' 59"  
 R = 252.78'  
 T = 68.29'  
 L = 133.39'  
 E = 9.06'  
 e = NC  
 T.R. = N/A  
 S.E. RUN = N/A  
 P.C. STA. = 139+52.62  
 P.T. STA. = 140+86.02



FILE NAME =	USER NAME = susera	DESIGNED -	REVISED -	<b>STATE OF ILLINOIS DEPARTMENT OF TRANSPORTATION</b>	<b>SUNSET DRIVE ALIGNMENT, TIES AND BENCHMARKS</b>	F.A.U. R.T.E.	SECTION	COUNTY	TOTAL SHEETS	SHEET NO.	
ps:\v04098 - sunset phase ii\plans\sheet	V04098stp10001.dgn	DRAWN -	REVISED -			2426	06-00082-00-PV	DUPAGE	63	10	
	PLOT SCALE = 100.0000' / IN.	CHECKED -	REVISED -			CONTRACT NO. 63015					
	PLOT DATE = 3/28/2008	DATE -	REVISED -			FED. ROAD DIST. NO. ILLINOIS FED. AID PROJECT					