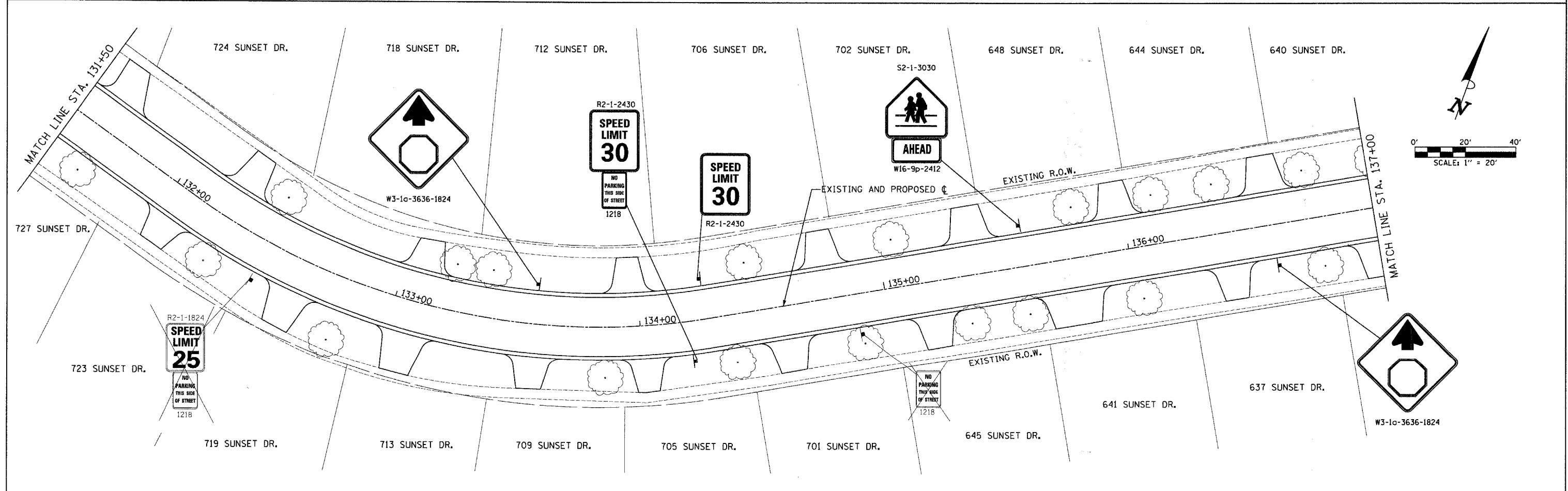


- LEGEND**
- ① PREFORMED PLASTIC PAVEMENT MARKING, TYPE B - INLAID - LINE 6"
  - ② PREFORMED PLASTIC PAVEMENT MARKING, TYPE B - INLAID - LINE 12"
  - ③ PREFORMED PLASTIC PAVEMENT MARKING, TYPE B - INLAID - LINE 24"
  - ④ PREFORMED PLASTIC PAVEMENT MARKING, TYPE B - LINE 6"
  - ⑤ PREFORMED PLASTIC PAVEMENT MARKING, TYPE B - LINE 24"
  - ▬ PROPOSED SIGN AND POST

NOTE: SEE DISTRICT ONE TYPICAL PAVEMENT MARKINGS DETAIL FOR MORE INFORMATION



FILE NAME = ps:\v04090 - sunset phase 1\plans\sheet	USER NAME = suser	DESIGNED -	REVISED -	<b>STATE OF ILLINOIS DEPARTMENT OF TRANSPORTATION</b>	<b>SUNSET DRIVE PAVEMENT MARKING &amp; SIGNING PLAN</b>		F.A.U. RTE. 2426	SECTION 06-00082-00-PV	COUNTY DUPAGE	TOTAL SHEETS 63	SHEET NO. 28	
	V04090amp10101.dgn	DRAWN -	REVISED -		SCALE: 1"=20'	SHEET NO. 1 OF 3 SHEETS	STA. 126+00 TO STA. 137+00	FED. ROAD DIST. NO. ILLINOIS	ILLINOIS FED. AID PROJECT	CONTRACT NO. 63015		
	PLOT SCALE = 20,0000 / IN.	CHECKED -	REVISED -									
	PLOT DATE = 3/28/2008	DATE -	REVISED -									