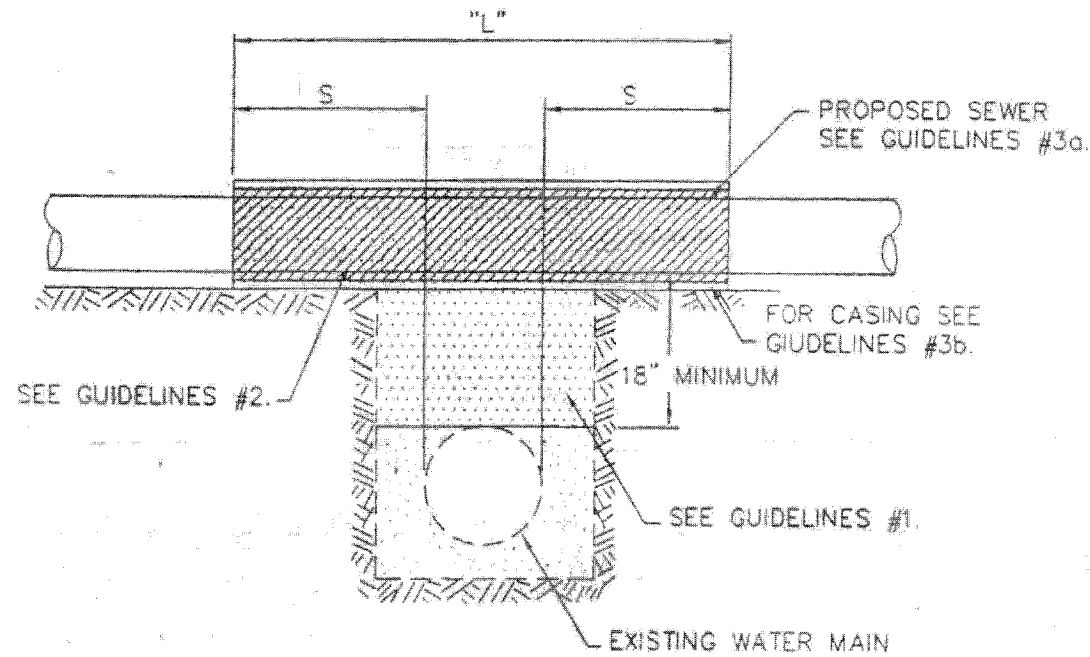


PROPOSED SEWER LINE WITH 18" MINIMUM VERTICAL SEPARATION ABOVE EXISTING WATER MAIN.

NOTE: COMPACTION REQUIREMENTS REFER TO 20-2.20B

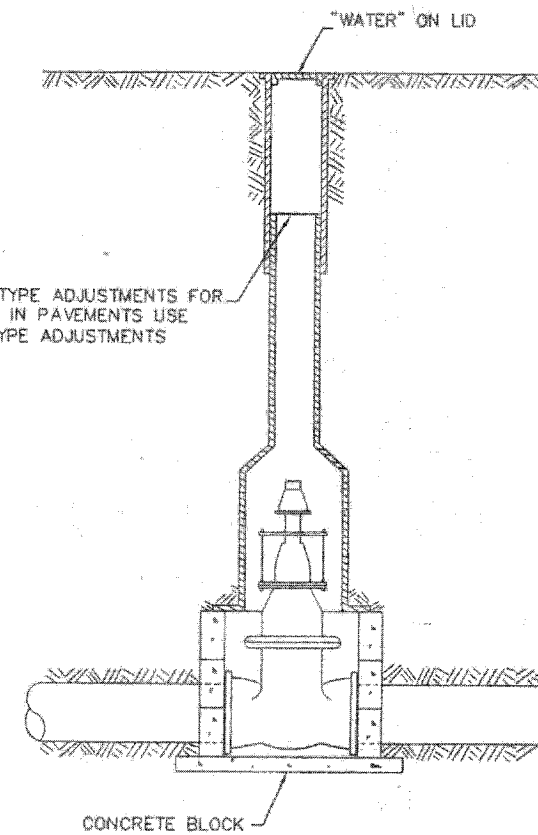
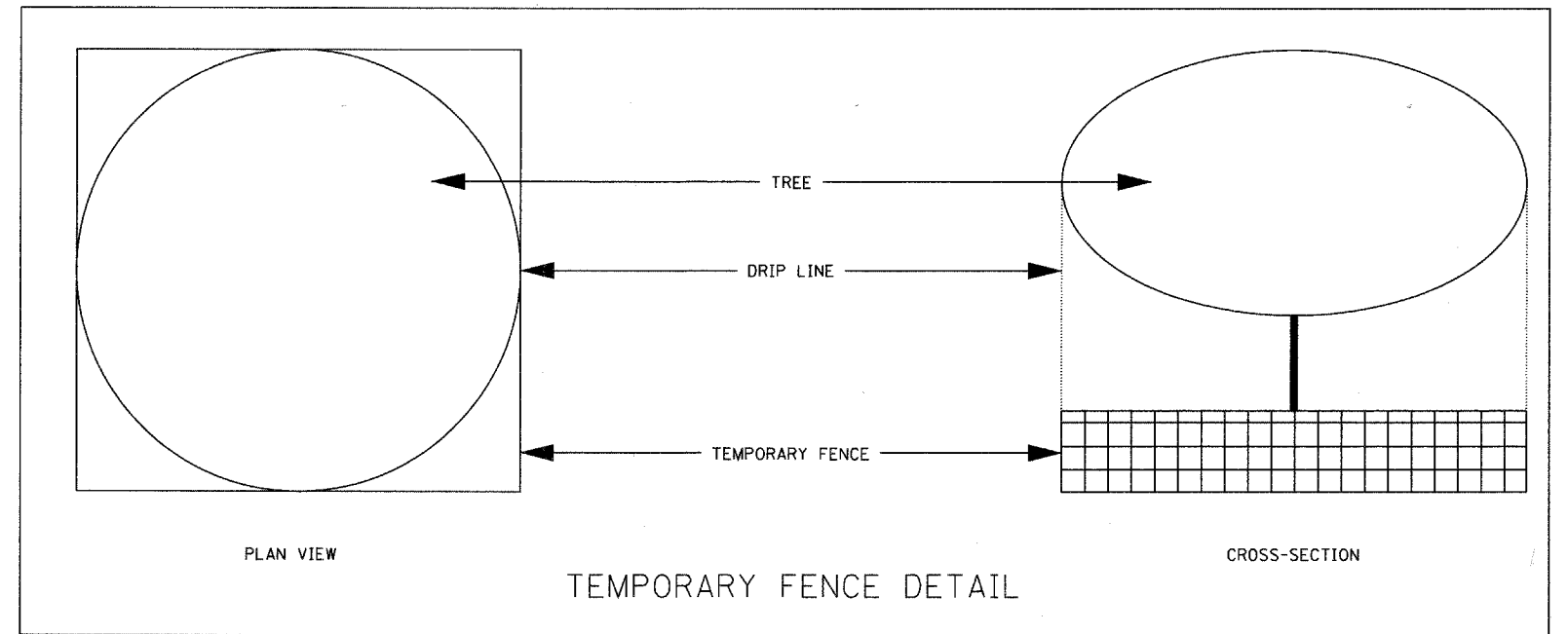


NOTE: "S" THE LENGTH NECESSARY TO PROVIDE 10 FEET OF SEPARATION AS MEASURED PERPENDICULAR TO EXISTING WATER MAIN

GUIDELINES

1. IF SELECT GRANULAR BACKFILL EXISTS: REMOVE WITHIN WIDTH OF PROPOSED SEWER TRENCH AND REPLACE WITH SELECT EXCAVATED MATERIAL (CLASS IV) AND COMPACT.
2. OMIT SELECT GRANULAR EMBEDMENT AND GRANULAR BACKFILL TO ONE (1) FOOT OVER TOP OF SEWER AND USE SELECT EXCAVATED MATERIAL (CLASS IV) AND COMPACT THE LENGTH OF "L" FEET.
3. a. CONSTRUCT "L" FEET OF PROPOSED SEWER OF WATER MAIN MATERIAL AND PRESSURE TEST, OR;
b. USE "L" FEET OF WATER MAIN MATERIAL FOR CASING OF PROPOSED SEWER AND SEAL ENDS OF CASING.

WATER AND SEWER SEPARATION REQUIREMENTS (VERTICAL SEPARATION)



TYPICAL VALVE BOX INSTALLATION