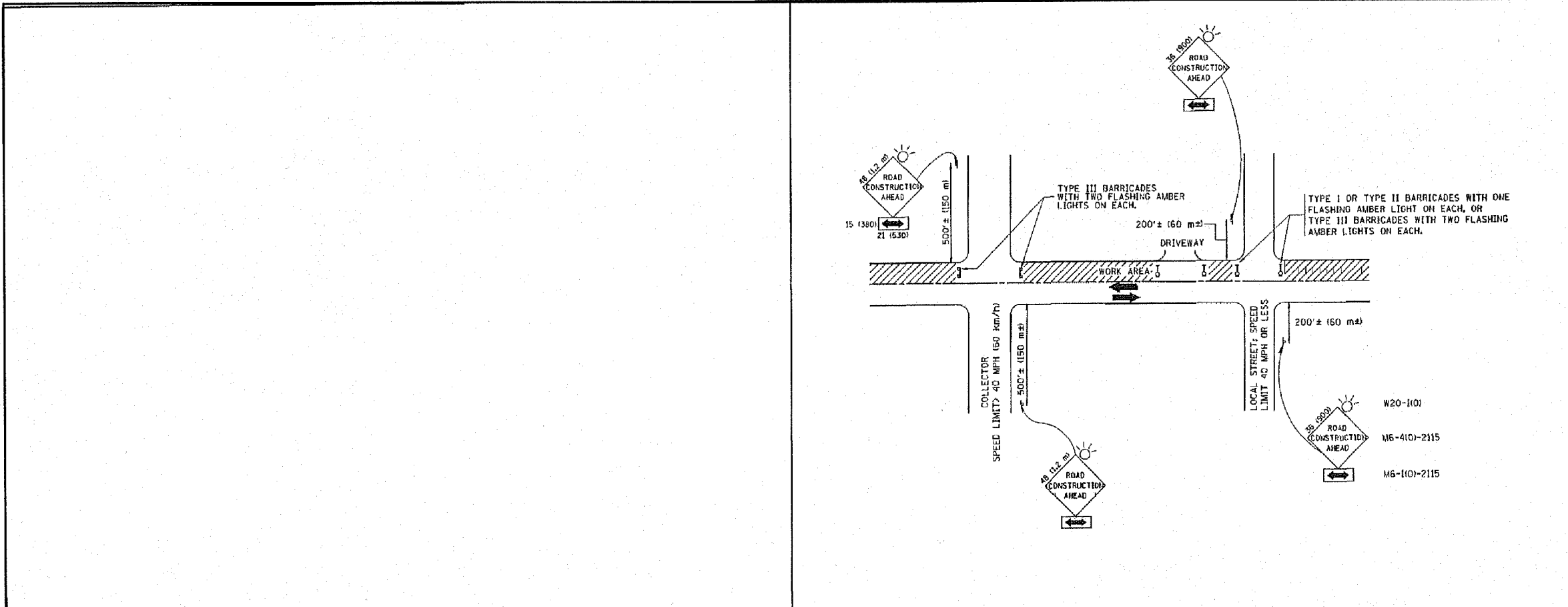


FAU RTE.	SECTION	COUNTY	TOTAL SHEETS	SHEET NO.
1524	08-00027-00-RS	COOK	15	11
STA. 10+00		TO STA. 88+81.23		
FED. ROAD DIST. NO.	ILLINOIS	FED. AID PROJECT		
CONTRACT NO. 63017				



TRAFFIC CONTROL AND PROTECTION FOR SIDE ROADS, INTERSECTIONS, AND DRIVEWAYS

NOTES:

- A. FOR NO LANE RESTRICTION ON THE SIDE ROAD OR DRIVEWAYS
    - 1. SIDE ROAD WITH A SPEED LIMIT OF 40 MPH (64 km/h) OR LESS AS SHOWN ON THE DRAWING AND AS DIRECTED BY THE ENGINEER.
      - a) ONE ROAD CONSTRUCTION AHEAD SIGN 38 x 38 (900x900) WITH A FLASHER AND FLAD MOUNTED ON IT APPROXIMATELY 200' (60 m) IN ADVANCE OF THE MAIN ROUTE.
      - b) THE CLOSED PORTION OF THE MAIN ROUTE SHALL BE PROTECTED BY BLOCKING WITH TYPE I, TYPE II OR TYPE III BARRICADES, 1/3 OF THE CROSS SECTION OF THE CLOSED PORTION.
    - 2. SIDE ROAD WITH A SPEED LIMIT GREATER THAN 40 MPH (64 km/h) AS SHOWN ON THE DRAWING AND AS DIRECTED BY THE ENGINEER.
      - a) ONE ROAD CONSTRUCTION AHEAD SIGN 48 x 48 (12.2 m x 12 m) WITH A FLASHER MOUNTED ON IT APPROXIMATELY 500' (150 m) IN ADVANCE OF THE MAIN ROUTE.
      - b) THE CLOSED PORTION OF THE MAIN ROUTE SHALL BE PROTECTED BY BLOCKING WITH TYPE III BARRICADES, 1/2 OF THE CROSS SECTION OF THE CLOSED PORTION.
  - 3. WHEN THE SIDE ROAD LIES BETWEEN THE BEGINNING OF THE MAINLINE SIGNING AND THE WORK ZONE, A SINGLE HEADED ARROW (M6-11) SHALL BE USED IN LIEU OF THE DOUBLE HEADED ARROW (M6-4).
- B. FOR A LANE CLOSURE ON A SIDE ROAD OR DRIVEWAY:
    - USE APPLICABLE PORTIONS OF THE TYPICAL APPLICATION OF TRAFFIC CONTROL DEVICES (STD. 70150L, STD. 70160G OR THE APPROPRIATE STANDARD). THE SPACING OF SIGNS AND BARRICADES SHALL BE ADJUSTED FOR FIELD CONDITIONS AS DIRECTED BY THE ENGINEER. THE DIRECTIONAL ARROW SHALL BE COVERED OR REMOVED WHEN NO LONGER CONSISTENT WITH THE SIDE ROAD LANE CLOSURE.
  - C. ADVANCE WARNING SIGNS ARE TO BE OMITTED ON DRIVEWAY UNLESS OTHERWISE NOTED.
  - D. THE TRAFFIC CONTROL AND PROTECTION FOR SIDE ROADS, INTERSECTIONS, AND DRIVEWAYS SHALL BE INCIDENTAL TO THE COST OF SPECIFIED TRAFFIC CONTROL STANDARDS OR ITEMS.

All dimensions are in millimeters (inches) unless otherwise shown.

**tbce** **Hoeffler-Butler Engineering, Inc.**  
 Consulting Civil Engineers • Land Surveyors  
 PROFESSIONAL DESIGN FIRM LICENSE NO. 194-90869  
 8714 S. ROBERTS ROAD • HICKORY HILLS, ILLINOIS 60437  
 (708) 599-8900 FAX (708) 599-8790

FILE NAME =	USER NAME = gajlarcbt	DESIGNED - LHA	REVISED - J. OBERLE 10-18-95
W:\dist\d1\22x34\1\tbl\tdgn		DRAWN -	REVISED - A. HOUSEH 03-06-96
		PLOT SCALE = 80:800 = 1" = 40'	REVISED - A. HOUSEH 10-15-96
		PLOT DATE = 1/4/2008	DATE - 06-09
			REVISED - T. RAMWACHER 01-06-00

STATE OF ILLINOIS  
DEPARTMENT OF TRANSPORTATION

TRAFFIC CONTROL AND PROTECTION FOR SIDE ROADS, INTERSECTIONS, AND DRIVEWAYS			
SCALE: NONE	SHEET NO. 1 OF 1 SHEETS	STA. _____	TO STA. _____

FAU RTE.	SECTION	COUNTY	TOTAL SHEETS	SHEET NO.
	TC-10			
FED. ROAD DIST. NO. 1		ILLINOIS	FED. AID PROJECT	
CONTRACT NO. _____				