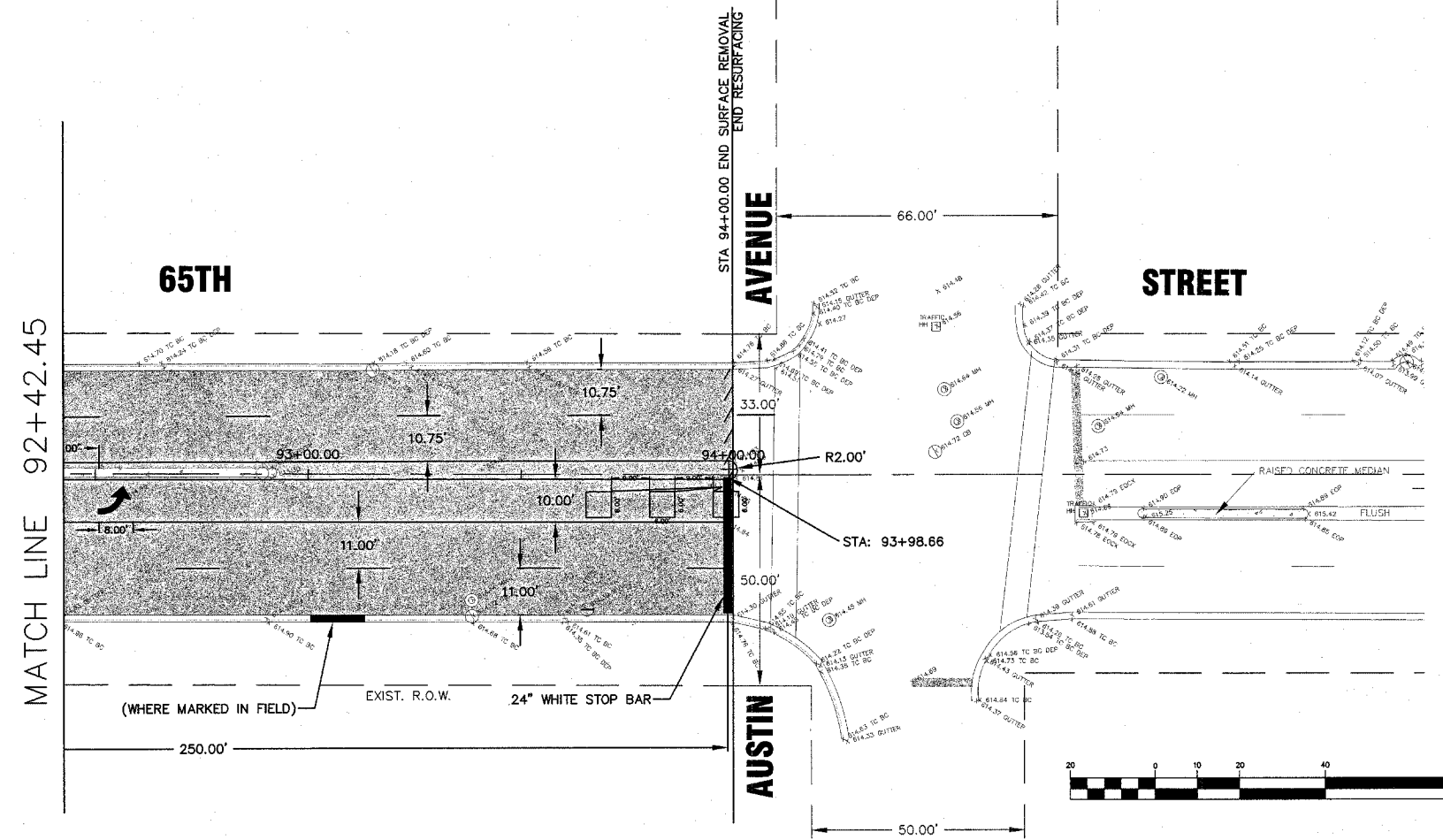
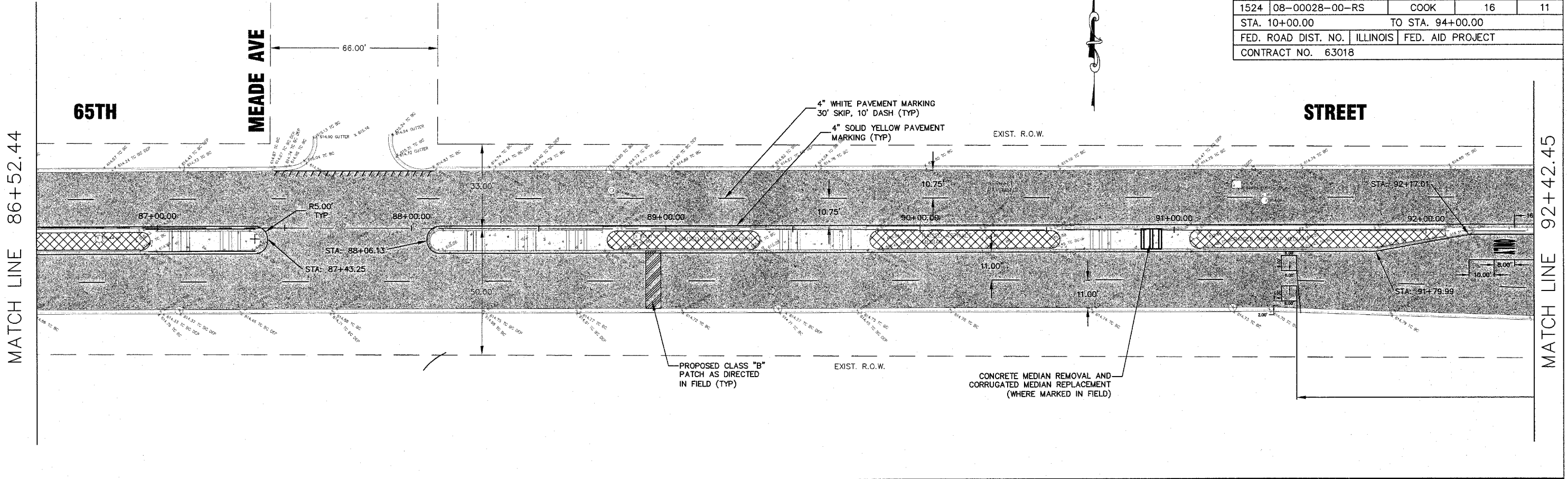


| FAU RTE. | SECTION | COUNTY | TOTAL SHEETS | SHEET NO. |
|--------------------------------|----------------|------------------|--------------|-----------|
| 1524 | 08-00028-00-RS | COOK | 16 | 11 |
| STA. 10+00.00 TO STA. 94+00.00 | | | | |
| FED. ROAD DIST. NO. ILLINOIS | | FED. AID PROJECT | | |
| CONTRACT NO. 63018 | | | | |



LEGEND

- PROPOSED CURB AND GUTTER REMOVAL AND REPLACEMENT
- PROPOSED HOT MIX ASPHALT SURFACE REMOVAL AND HOT MIX ASPHALT SURFACE COURSE, 2 1/4"
- LIMITS OF SURFACE REMOVAL - BUTT JOINT
- MEDIAN SURFACE REMOVAL AND HOT-MIX ASPHALT MEDIAN SURFACE REPLACEMENT, 2"

NOTE:
 ALL SANITARY/STORM MANHOLES, CATCH BASINS AND INLETS SHALL BE ADJUSTED WITH RUBBER ADJUSTING RINGS AS DIRECTED BY THE ENGINEER.

PAVEMENT MARKING NOTES:
 1) THERMOPLASTIC PAVEMENT MARKING SHALL BE INSTALLED ON BITUMINOUS PAVEMENT ONLY

| REVISIONS | | ILLINOIS DEPARTMENT OF TRANSPORTATION VILLAGE OF BEDFORD PARK 65TH STREET RESURFACING HARLEM AVE. TO AUSTIN AVE. PLAN VIEW SCALE: STA. 86+52.44 - STA. 94+00.00 HORIZ: 1"=20' DATE: 12/26/07 |
|-----------|----------|---|
| NAME | DATE | |
| S. LEIBER | 02/19/08 | DRAWN BY: ECC CHECKED BY: SAL |
| | | |
| | | |
| | | |

hbe **Hoeflerle-Butler Engineering, Inc.**
 Consulting Civil Engineers - Land Surveyors
 PROFESSIONAL DESIGN FIRM LICENSE NO. 184-08619
 8714 S. ROBERTS ROAD HICKORY HILLS, ILLINOIS 60457
 (708) 595-8980 FAX (708) 599-8790

I:\Projects\108\108000\108000.dwg, SHEET 11, 12/26/07 11:58:54 AM, 11