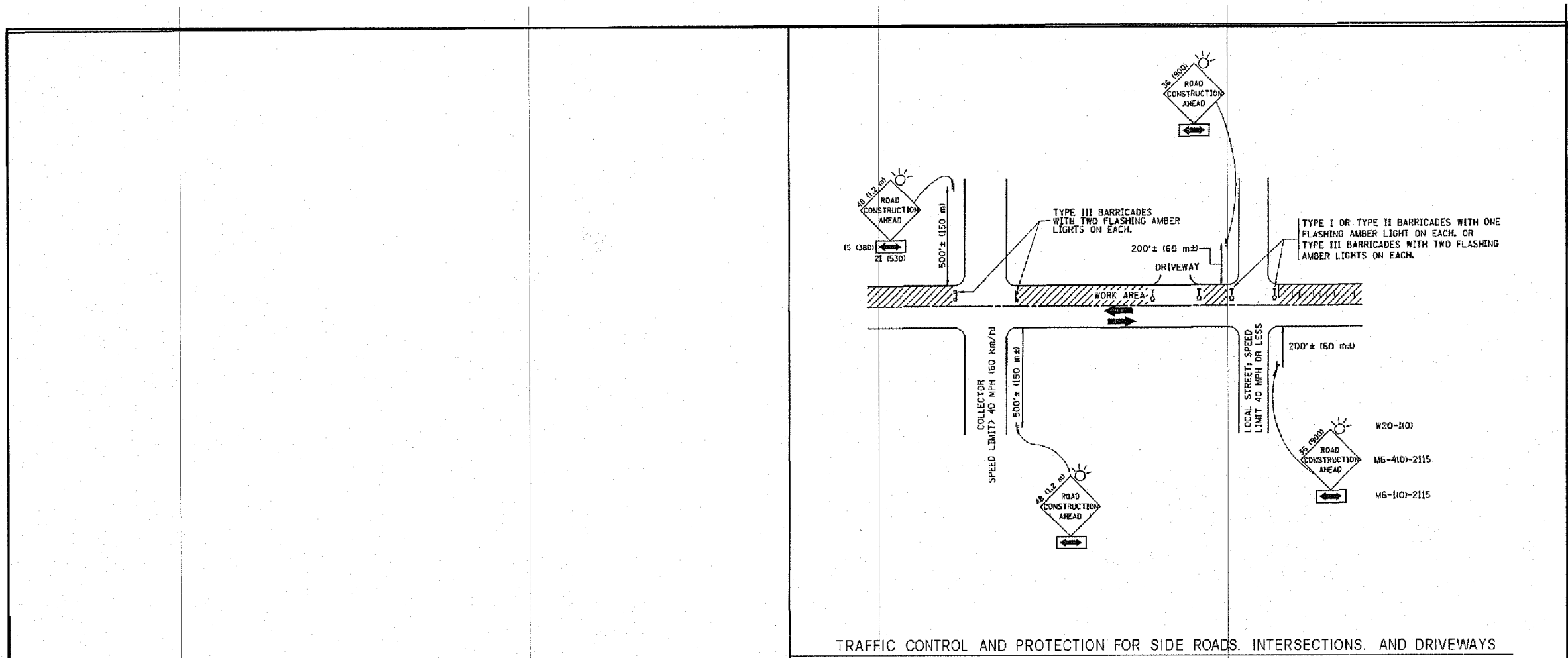


FAU RTE.	SECTION	COUNTY	TOTAL SHEETS	SHEET NO.
1524	08-00028-00-RS	COOK	16	12
STA. 10+00.00		TO STA. 94+00.00		
FED. ROAD DIST. NO.		ILLINOIS	FED. AID PROJECT	
CONTRACT NO. 63018				



TRAFFIC CONTROL AND PROTECTION FOR SIDE ROADS, INTERSECTIONS, AND DRIVEWAYS

NOTES:

- A. FOR NO LANE RESTRICTION ON THE SIDE ROAD OR DRIVEWAYS
- B. FOR A LANE CLOSURE ON A SIDE ROAD OR DRIVEWAY:
  - USE APPLICABLE PORTIONS OF THE TYPICAL APPLICATION OF TRAFFIC CONTROL DEVICES (STD. 701501, STD. 701606 OR THE APPROPRIATE STANDARD). THE SPACING OF SIGNS AND BARRICADES SHALL BE ADJUSTED FOR FIELD CONDITIONS AS DIRECTED BY THE ENGINEER. THE DIRECTIONAL ARROW SHALL BE COVERED OR REMOVED WHEN NO LONGER CONSISTENT WITH THE SIDE ROAD LANE CLOSURE.
  - C. ADVANCE WARNING SIGNS ARE TO BE OMITTED ON DRIVEWAY UNLESS OTHERWISE NOTED.
  - D. THE TRAFFIC CONTROL AND PROTECTION FOR SIDE ROADS, INTERSECTIONS, AND DRIVEWAYS SHALL BE INCIDENTAL TO THE COST OF SPECIFIED TRAFFIC CONTROL STANDARDS OR ITEMS.
- 1. SIDE ROAD WITH A SPEED LIMIT OF 40 MPH (60 km/h) OR LESS AS SHOWN ON THE DRAWING AND AS DIRECTED BY THE ENGINEER:
  - a) ONE ROAD CONSTRUCTION AHEAD SIGN 38 x 38 (900x900) WITH A FLASHER AND FLAG MOUNTED ON IT APPROXIMATELY 200' (60 m) IN ADVANCE OF THE MAIN ROUTE.
  - b) THE CLOSED PORTION OF THE MAIN ROUTE SHALL BE PROTECTED BY BLOCKING WITH TYPE I, TYPE II OR TYPE III BARRICADES, 1/3 OF THE CROSS SECTION OF THE CLOSED PORTION.
- 2. SIDE ROAD WITH A SPEED LIMIT GREATER THAN 40 MPH (60 km/h) AS SHOWN ON THE DRAWING AND AS DIRECTED BY THE ENGINEER:
  - a) ONE ROAD CONSTRUCTION AHEAD SIGN 48 x 48 (11.2 m x 11.2 m) WITH A FLASHER MOUNTED ON IT APPROXIMATELY 500' (150 m) IN ADVANCE OF THE MAIN ROUTE.
  - b) THE CLOSED PORTION OF THE MAIN ROUTE SHALL BE PROTECTED BY BLOCKING WITH TYPE III BARRICADES, 1/2 OF THE CROSS SECTION OF THE CLOSED PORTION.
- 3. WHEN THE SIDE ROAD LIES BETWEEN THE BEGINNING OF THE MAINLINE SIGNING AND THE WORK ZONE, A SINGLE HEADED ARROW (W-6-U) SHALL BE USED IN LIEU OF THE DOUBLE HEADED ARROW (W-6-D).

All dimensions are in millimeters (inches) unless otherwise shown.

**hbe** **Hoeffler-Butler Engineering, Inc.**  
 Consulting Civil Engineers - Land Surveyors  
 PROFESSIONAL DESIGN FIRM LICENSE NO. 084-00889  
 8774 S. ROBERTS ROAD - HICKORY HILLS, ILLINOIS 60457  
 (708) 599-8988 FAX (708) 599-8770

FILE NAME =	USER NAME = gajlarob1	DESIGNED - LHA	REVISED - J. OBERLE 10-18-95	<b>STATE OF ILLINOIS DEPARTMENT OF TRANSPORTATION</b>	<b>TRAFFIC CONTROL AND PROTECTION FOR SIDE ROADS, INTERSECTIONS, AND DRIVEWAYS</b>			FAU RTE.	SECTION	COUNTY	TOTAL SHEETS	SHEET NO.	
W:\des\etd\22-34\1c10.dgn		DRAWN -	REVISED - A. HOUSEH 03-06-96		SCALE: NONE	SHEET NO. 1 OF 1 SHEETS	STA.	TO STA.	TC-10	CONTRACT NO.			
		CHECKED -	REVISED - A. HOUSEH 10-15-96						FED. ROAD DIST. NO. 1	ILLINOIS	FED. AID PROJECT		
		DATE - 06-89	REVISED - T. RAMMACKER 01-06-00										