

FAU RTE. 2826, 3601	SECTION *	COUNTY COOK	TOTAL SHEETS 16	SHEET NO. 1
STA. TO STA.		ILLINOIS		
FED. ROAD DIST. NO. 07-00071-00-RS				

INDEX OF SHEETS

SHEET NO.	SHEET NAME
1	COVER
2	GENERAL NOTES & LIST OF HIGHWAY STANDARDS
3	SUMMARY OF QUANTITIES
4	TYPICAL CROSS SECTIONS AND DETAILS
5-7	APPLE DRIVE PLANS
8	APPLE TREE DRIVE & LAUREL LANE PLAN
9-13	LAUREL LANE PLANS
14	CURB AND GUTTER REMOVAL AND REPLACEMENT, BD-24, DISTRICT 1
15	BUTT JOINT AND HMA TAPER DETAIL, BD-32, DISTRICT 1
16	DISTRICT ONE, TYPICAL PAVEMENT MARKING, TC-13

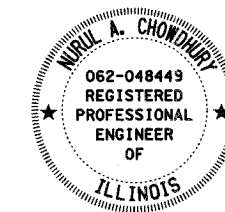
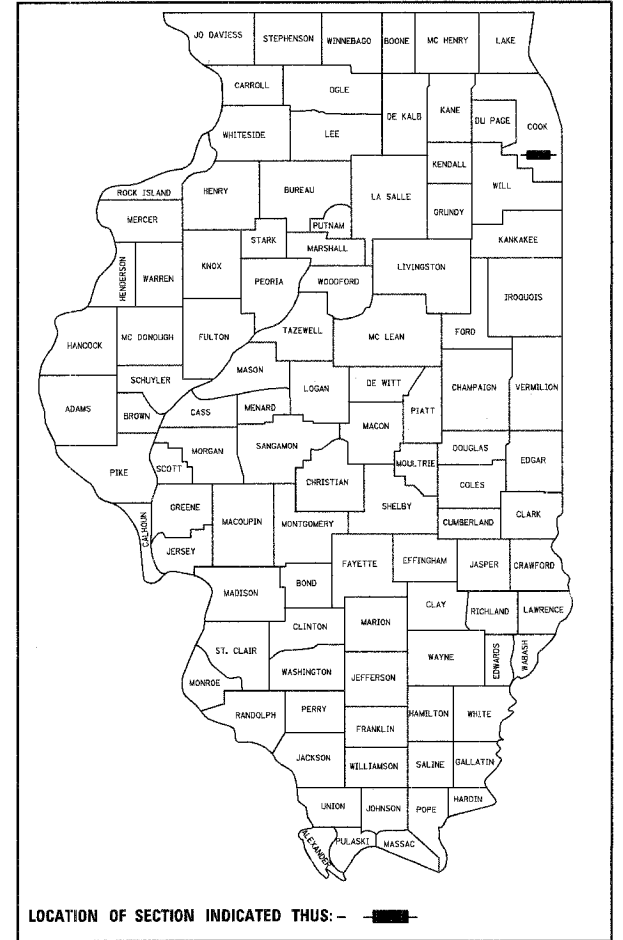
**STATE OF ILLINOIS
DEPARTMENT OF TRANSPORTATION
DIVISION OF HIGHWAYS**

**PLANS FOR PROPOSED
FEDERAL AID HIGHWAY**

VILLAGE OF HAZEL CREST

**FAU RTE. 2826 (APPLE TREE DRIVE), 175TH STREET TO LAUREL LANE
FAU RTE. 3601 (LAUREL LANE), APPLE TREE DRIVE TO ELM DRIVE
LOCAL AGENCY PAVEMENT PRESERVATION - RESURFACING**

**COOK COUNTY
SECTION 07-00071-00-RS
PROJECT M-8003 (953)
C-91-195-08**



LICENSE EXPIRATION DATE: 11/30/09

TRAFFIC DATA:
ADT=375

SPEED LIMIT ON APPLE TREE DRIVE - 25 MPH
SPEED LIMIT ON LAUREL LANE - 20 MPH

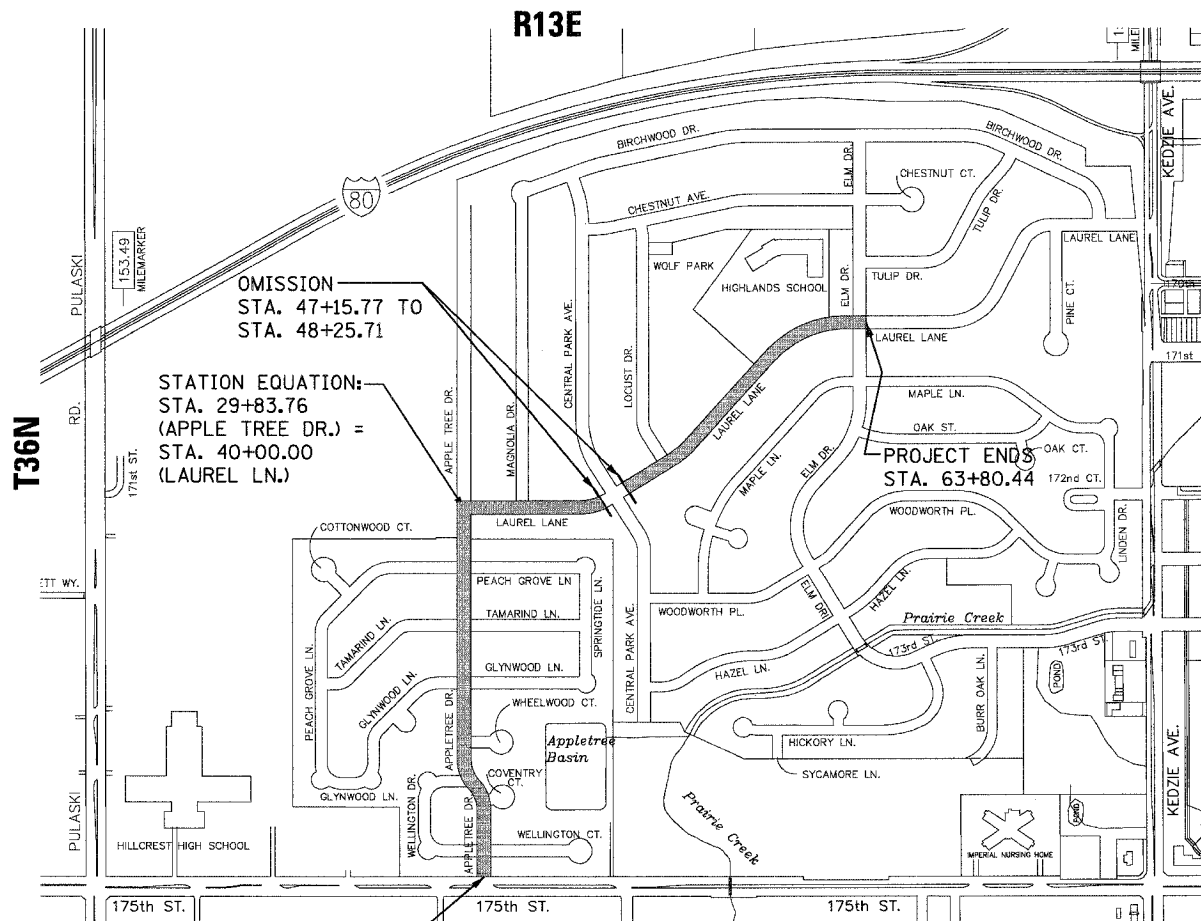
STATE OF ILLINOIS
DEPARTMENT OF TRANSPORTATION
DIVISION OF HIGHWAYS

Approved: *Robert B. Donaldson* 3/25/08 DATE
Village President, Village of Hazel Crest SIGNATURE

Passed: APRIL 11, 2008 DATE
Christopher Holt SIGNATURE
District #1 Engineer of Local Roads & Streets

Releasing for Bid
Based on Limited
Review: APRIL 14, 2008 DATE
Diana M. O'Keefe SIGNATURE
Deputy Director of Highways, Region #1 Engineer

PRINTED BY AUTHORITY OF THE STATE OF ILLINOIS



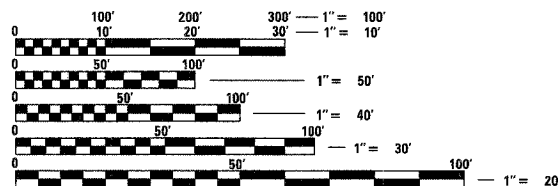
LOCATION MAP

N.T.S.

GROSS LENGTH OF PROJECT = 4,257.00 FT = 0.81 MILE
NET LENGTH OF PROJECT = 4,147.00 FT = 0.79 MILE

**PROJECT LOCATED IN
VILLAGE OF HAZEL CREST**

DESIGN DESIGNATION:
390(28) COLLECTOR 2.51 (HMA8)



FULL SIZE PLANS HAVE BEEN PREPARED USING STANDARD ENGINEERING SCALES. REDUCED SIZED PLANS WILL NOT CONFORM TO STANDARD SCALES. IN MAKING MEASUREMENTS ON REDUCED PLANS, THE ABOVE SCALES MAY BE USED.

J.U.L.I.E.
JOINT UTILITY LOCATION INFORMATION FOR EXCAVATION
1-800-892-0123

CONTRACT NO. 63019

GLOBETROTTERS ENGINEERING CORP.: CHANDRA S. TRIVEDI (312)697-3580

FIELD ENGINEER : MEL MANGOBA (847) 705-4408