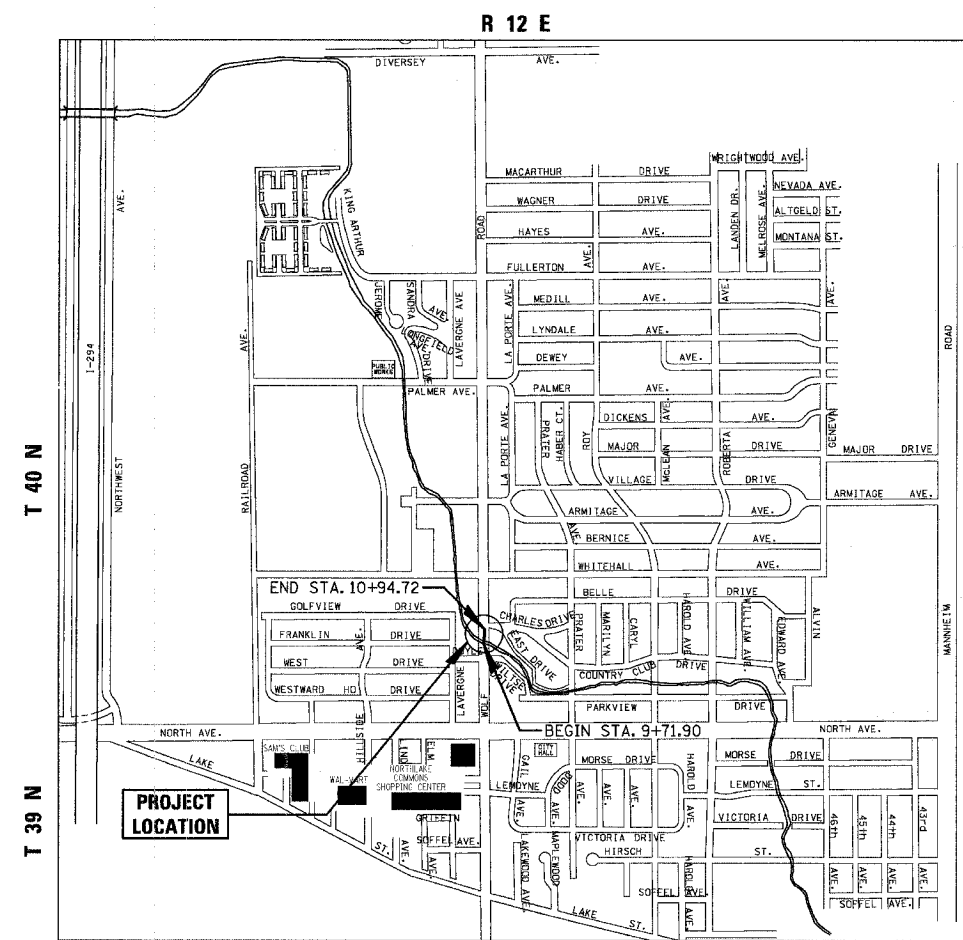


F.A.U. RTE.	SECTION	COUNTY	TOTAL SHEETS	SHEET NO.
2690	08-00065-00-SP	COOK	12	1
FED. ROAD DIST. NO. 1		ILLINOIS FED. AID PROJECT		
<b>CONTRACT NO. 63021</b>				

**INDEX OF SHEETS**

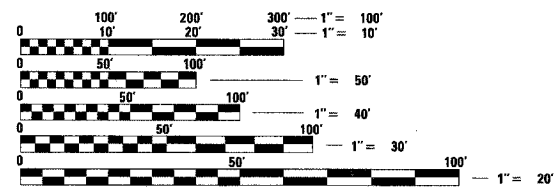
SHEET NO.	DESCRIPTION
1	TITLE SHEET
2	GENERAL NOTES AND IDOT STANDARDS
3	SUMMARY OF QUANTITIES
4	TYPICAL SECTIONS
5	ALIGNMENT, TIES AND BENCHMARKS
6	REMOVAL PLAN
7	PROPOSED PLAN
8	CONSTRUCTION DETAILS
9	CURB OR CURB AND GUTTER REMOVAL AND REPLACEMENT
10	PAVEMENT PATCHING FOR HMA SURFACED PAVEMENT
11	DISTRICT ONE TYPICAL PAVEMENT MARKINGS
12	TRAFFIC CONTROL AND PROTECTION FOR SIDE ROADS, INTERSECTIONS, AND DRIVEWAYS

**STATE OF ILLINOIS**  
**DEPARTMENT OF TRANSPORTATION**  
**DIVISION OF HIGHWAYS**  
  
**PLANS FOR PROPOSED**  
**FEDERAL AID HIGHWAY**  
  
**WOLF ROAD AT COUNTRY CLUB DRIVE**  
**Section No.: 08-00065-00-SP**  
**MEDIAN IMPROVEMENTS**  
**Project No.: M-8003(973)**  
**CITY OF NORTHLAKE**  
**COOK COUNTY**  
**JOB NO.: C-91-194-08**



**TRAFFIC DATA-WOLF ROAD**  
**ADT (YEAR) = 12,600 (2006)**  
**SPEED LIMIT = 30 MPH**

**THE CONTRACTOR SHALL BE SOLELY RESPONSIBLE FOR JOB SITE SAFETY AS WELL AS SUPERVISION/DIRECTION AND MEANS/METHODS OF CONSTRUCTION.**



FULL SIZE PLANS HAVE BEEN PREPARED USING STANDARD ENGINEERING SCALES. REDUCED SIZED PLANS WILL NOT CONFORM TO STANDARD SCALES. IN MAKING MEASUREMENTS ON REDUCED PLANS, THE ABOVE SCALES MAY BE USED.

**J.U.L.I.E.**  
**JOINT UTILITY LOCATION INFORMATION FOR EXCAVATION**  
**1-800-892-0123**

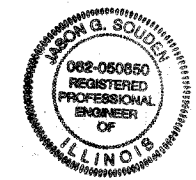
**STATE OF ILLINOIS**  
**DEPARTMENT OF TRANSPORTATION**  
**DIVISION OF HIGHWAYS**

APPROVED 2/21 20 08  
  
**MAYOR**  
**CITY OF NORTHLAKE**

PASSED April 10 20 08  
  
**CHRISTOPHER HOYT**  
**DISTRICT 1 ENGINEER OF LOCAL ROADS AND STREETS**

RELEASING FOR BID BASED ON LIMITED REVIEW APRIL 10, 20 08

Diana M. O'Keefe *of*  
**DEPUTY DIRECTOR OF HIGHWAYS**  
**REGION ONE ENGINEER**



2/21 . 2008  
  
**JASON G. SOUDEN**  
 ILLINOIS REGISTRATION No. 062-050650 ENGINEER  
 EXPIRATION DATE: 11/30/09

**LOCATION MAP - PROVISO TOWNSHIP**  
**GROSS LENGTH OF PROJECT = 125 LINEAL FEET 0.02 (MI.)**  
**NET LENGTH OF PROJECT = 125 LINEAL FEET 0.02 (MI.)**

**CHRISTOPHER B. BURKE** ENGINEERING LTD.  
 9575 West Higgins Road, Suite 600  
 Rosemont, Illinois 60018 (847) 823-0500

**FIELD ENGINEER: MARILYN SOLOMON**  
 201 W. CENTER COURT  
 SCHAUMBURG, ILLINOIS 60196-1096  
 (847) 705-4407

**CONTRACT NO. 63021**