

F.A.U. RTE.	SECTION	COUNTY	TOTAL SHEETS	SHEET NO.
--	07-00049-00-SW	COOK	8	1
FED. ROAD DIST. NO. 1		ILLINOIS	FED. AID PROJECT	
CONTRACT No. 63022				

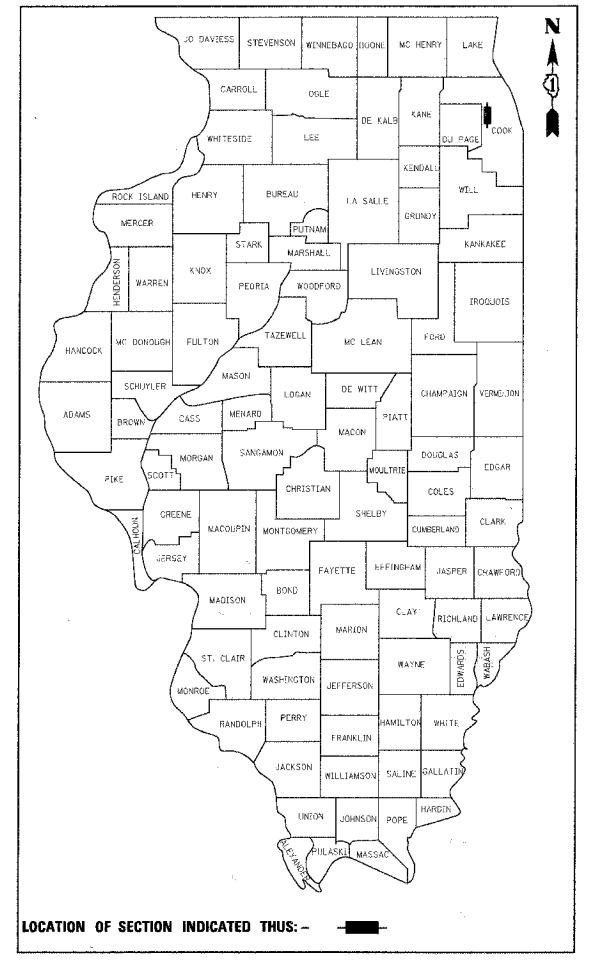
**STATE OF ILLINOIS
DEPARTMENT OF TRANSPORTATION
DIVISION OF HIGHWAYS**

PLANS FOR PROPOSED FEDERAL AID HIGHWAY

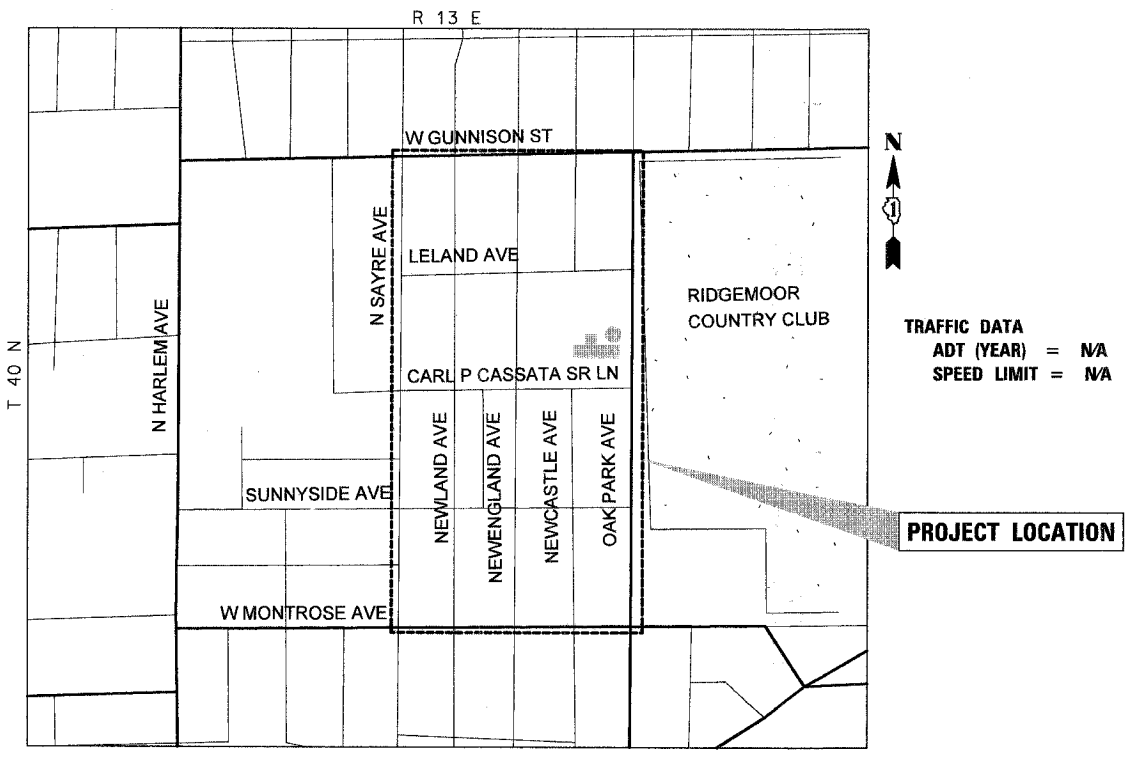
**VILLAGE OF HARWOOD HEIGHTS
PEDESTRIAN FACILITY IMPROVEMENTS FOR
UNION RIDGE ELEMENTARY SCHOOL
SECTION No. 07-00049-00-SW
PROJECT No. CMM-8003 (884)
JOB No. C-91-050-08
PEDESTRIAN FACILITY IMPROVEMENTS**

INDEX OF SHEETS

DESCRIPTION	SHEET NO.
TITLE SHEET	1
GENERAL NOTES & IDOT STANDARDS	2
SUMMARY OF QUANTITIES	3
OVERALL SITE PLAN	4
CONSTRUCTION DETAILS	5
DISTRICT ONE TYPICAL PAVEMENT MARKINGS	6
TRAFFIC CONTROL AND PROTECTION FOR SIDE ROADS, INTERSECTIONS AND DRIVEWAYS	7
PAVEMENT MARKING LETTERS AND SYMBOLS FOR TRAFFIC STAGING	8



COOK COUNTY

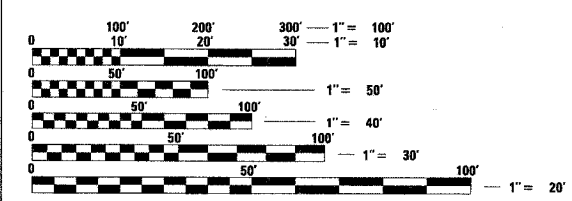


LIST OF STATE STANDARDS LOCATED ON SHEET NO. 2

THE CONTRACTOR SHALL BE SOLELY RESPONSIBLE FOR JOB SITE SAFETY AS WELL AS SUPERVISION/DIRECTION AND MEANS/METHODS OF CONSTRUCTION.

CALL JULIE 1-800-892-0123
WITH THE FOLLOWING:

COUNTY COOK
CITY-TOWNSHIP HARWOOD HEIGHTS
SEC. & 1/4 SEC. NO. * N.E. 1/4 SEC 13, T40N R12E
48 HOURS BEFORE YOU DIG.
EXCLUDING SAT., SUN., & HOLIDAYS



FULL SIZE PLANS HAVE BEEN PREPARED USING STANDARD ENGINEERING SCALES. REDUCED SIZED PLANS WILL NOT CONFORM TO STANDARD SCALES. IN MAKING MEASUREMENTS ON REDUCED PLANS, THE ABOVE SCALES MAY BE USED.

CONTRACT NO. 63022

FIELD ENGINEER: MARILYN D. SOLOMON
201 W. CENTER COURT
SCHAMBURG, ILLINOIS 60196-1096
(847) 705-4407

LOCATION MAP
N.T.S.

GROSS LENGTH OF PROJECT = NA
NET LENGTH OF PROJECT = NA



LEE M. FELL P.E.
ENGINEER
3/7/08
DATE
ILLINOIS REGISTRATION No. 062-053706
EXPIRATION DATE: 11/2009

**STATE OF ILLINOIS
DEPARTMENT OF TRANSPORTATION
DIVISION OF HIGHWAYS**

APPROVED 3-7 2008
Margaret Fuller
MAYOR

PASSED APRIL 10 2008
Christopher Holt
DISTRICT 1/ENGINEER OF LOCAL ROADS AND STREETS

RELEASING FOR BID
BASED ON LIMITED
REVIEW APRIL 10, 2008
Diana M. O'Keefe
DEPUTY DIRECTOR OF HIGHWAYS, REGION 1 ENGINEER

CHRISTOPHER B. BURKE ENGINEERING, LTD.
9575 W. Higgins Road, Suite 600
Rosemont, Illinois 60018
(847) 823-0500

PROFESSIONAL DESIGN FIRM NO. 184-001175
EXPIRATION DATE: 04/30/09