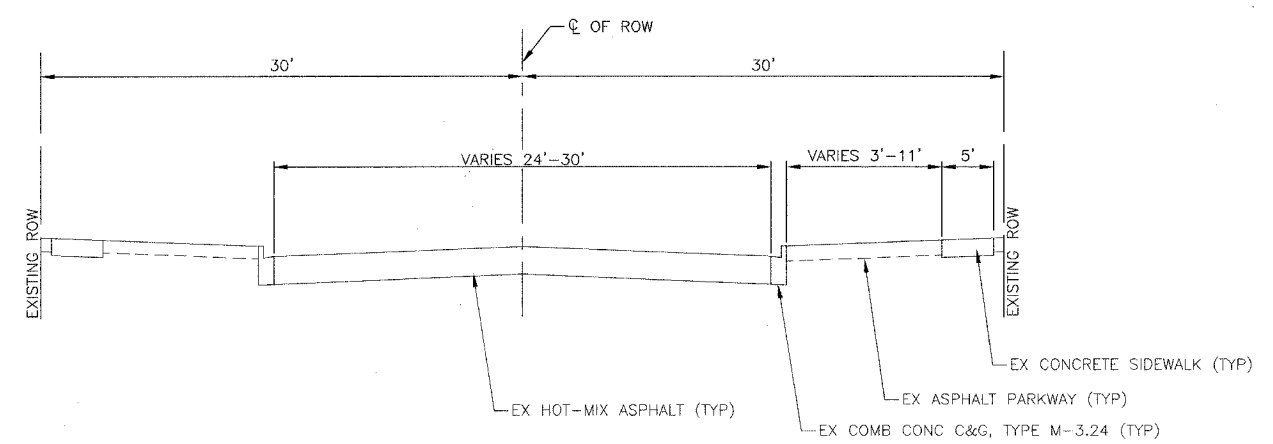


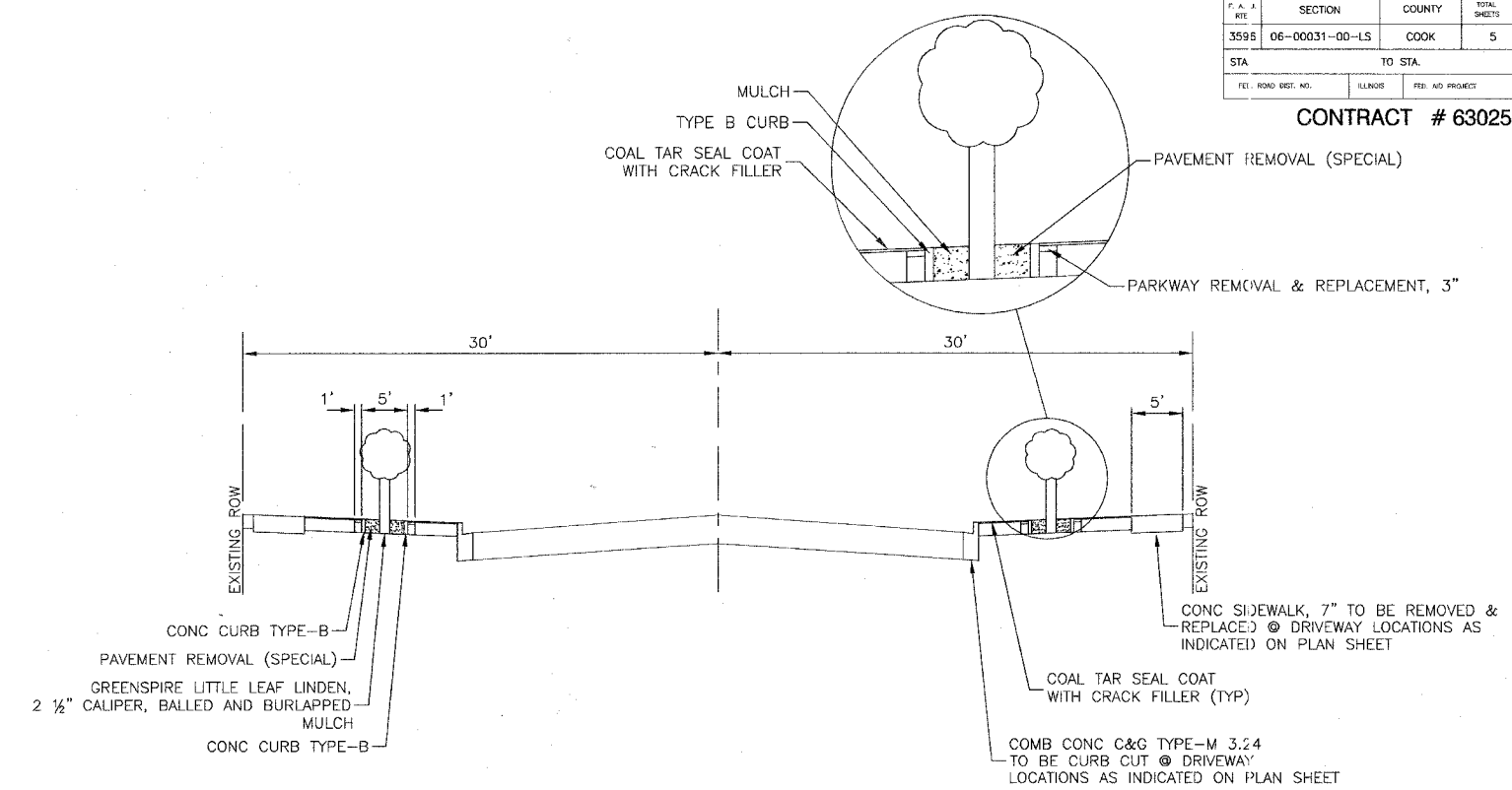
P. A. I. NO.	SECTION	COUNTY	TOTAL SHEETS	SHEET NO.
3595	06-00031-00-LS	COOK	5	4
STA.		TO STA.		
FED. ROAD DIST. NO.	ILLINOIS	FED. AID PROJECT		

CONTRACT # 63025



EXISTING TYPICAL SECTION

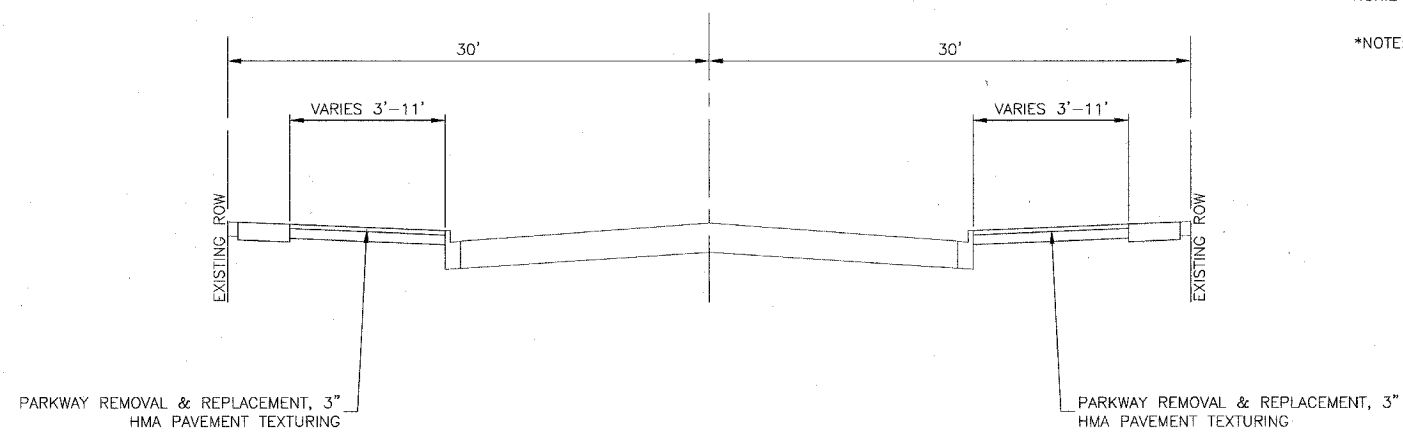
YATES AVENUE, BENSLEY AVENUE, CALHOUN AVENUE, AND HOXIE AVENUE.



PROPOSED COAL TAR SEAL COAT TYPICAL SECTION

YATES AVENUE - STA. 10+70.59 TO 11+49.10
 BENSLEY AVENUE - STA. 20+70.65 TO STA. 21+49.64
 CALHOUN AVENUE - STA. 30+70.65 TO STA. 31+50.04
 HOXIE AVENUE - STA. 40+70.61 TO STA. 41+52.87

*NOTE: NO TREES TO BE PLANTED ALONG YATES AVENUE



PROPOSED REMOVAL AND REPLACEMENT TYPICAL SECTION

YATES AVENUE - STA. 10+38.96 TO 10+52.62
 BENSLEY AVENUE - STA. 20+30.22 TO STA. 20+52.65
 CALHOUN AVENUE - STA. 30+32.66 TO STA. 30+52.65
 HOXIE AVENUE - STA. 40+33.76 TO STA. 40+52.61

HOT-MIX ASPHALT MIXTURE REQUIREMENT CHART				
ITEM	MIXTURE	GYRATION	AC-TYPE	VOIDS
HOT-MIX ASPHALT BINDER COURSE (FOR DRIVEWAY PAVEMENT)	IL-19.0	50	PG 64-22*	4%
HOT-MIX ASPHALT SURFACE COURSE, MIX "C"	IL 9.5mm	50	PG 64-22	4%

*WHEN RAP EXCEEDS 20%, THE NEW ASPHALT BINDER IN THE MIX SHALL BE PG 58-22.
 THE UNIT WEIGHT USED TO CALCULATE ALL HOT-MIX ASPHALT SURFACE MIXTURES IS 112 LBS/SQ YD/IN

REVISIONS	
NAME	DATE

ILLINOIS DEPARTMENT OF TRANSPORTATION

SCENIC BEAUTIFICATION AT STATE STREET FROM YATES TO HOXIE AVENUE TYPICAL CROSS SECTIONS

SCALE: VERT. NA
 HORIZ. NA
 DATE: 12-28-07

DRAWN BY: JZ
 CHECKED BY: DWS