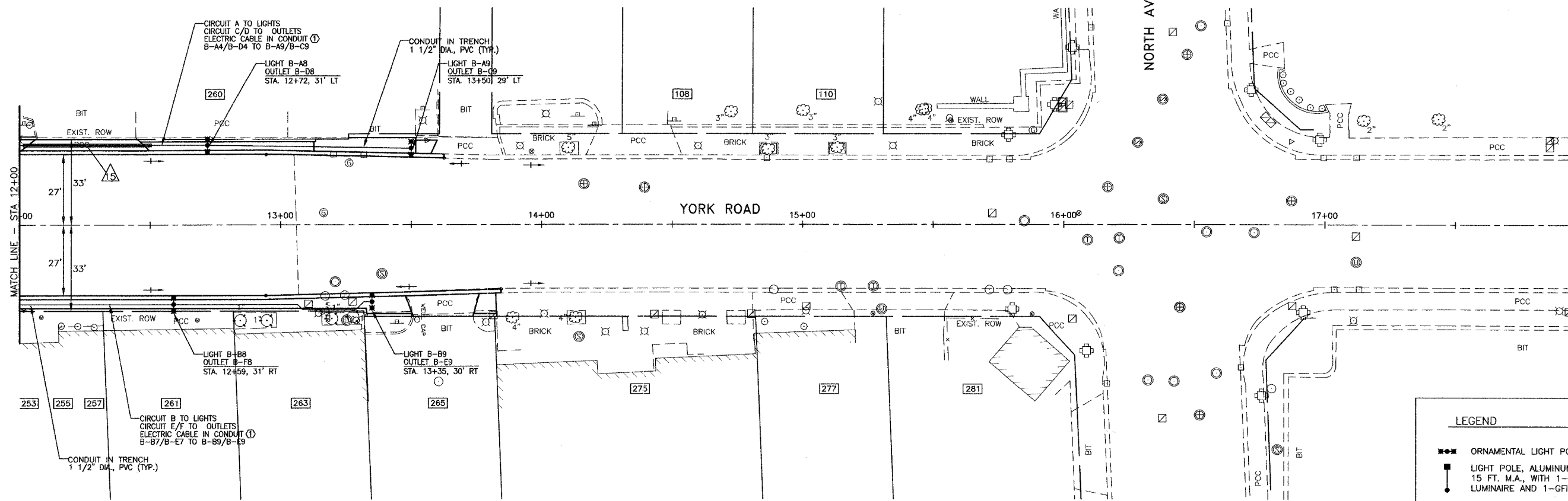


F.A.U. RTE.	SECTION	COUNTY	TOTAL SHEETS	SHEET NO.
2678	08-00169-00-LT	DUPAGE	39	10
STA. 12+00	TO STA. 13+85			
FED. ROAD DIST. NO.	ILLINOIS	FED. AID PROJECT		
CONTRACT NO. 63027				



CONDUIT TABLE

CONDUIT	LENGTH	TYPE	SIZE
△15	49'	GALVANIZED STEEL IN TRENCH	2"

ELECTRIC CABLE LEGEND

① LIGHT: 2 #8 XLP (HOT)
 OUTLET: 2 #8 XLP (HOT), 1 #8 XLP (NEUTRAL), 1 #8 XLP (GROUND)

LEGEND

- ◆◆◆ ORNAMENTAL LIGHT POLE, INSTALL ONLY
- LIGHT POLE, ALUMINUM, 30 FT. M.H. 15 FT. M.A., WITH 1-400 WATT H.P.S. LUMINAIRE AND 1-GFI OUTLET
- PROPOSED LIGHTING CIRCUIT
- ⊙ (R) EXISTING LIGHT TO BE REMOVED
- PROPOSED PAD MOUNTED LIGHTING CONTROLLER
- PROPOSED CONCRETE HANDHOLE
- ⊠ EXISTING CONTROLLER
- ⊠ EXISTING LIGHT (COMBINATION) SIGNAL POST AND LIGHT POLE, 30 FT M.H., 1 1/2 FT M.A.
- ⊠ EXISTING HANDHOLE
- ⊠ EXISTING FIRE HYDRANT
- ⊙ EXISTING MANHOLE
- ⊠ EXISTING POWER POLE

REVISIONS	
NAME	DATE

ILLINOIS DEPARTMENT OF TRANSPORTATION
 F.A.U.
 YORK ROAD

LIGHTING PLAN SHEET

SCALE: 1"=20'
 12/22/07

DRAWN BY: BCD
 CHECKED BY: JDM