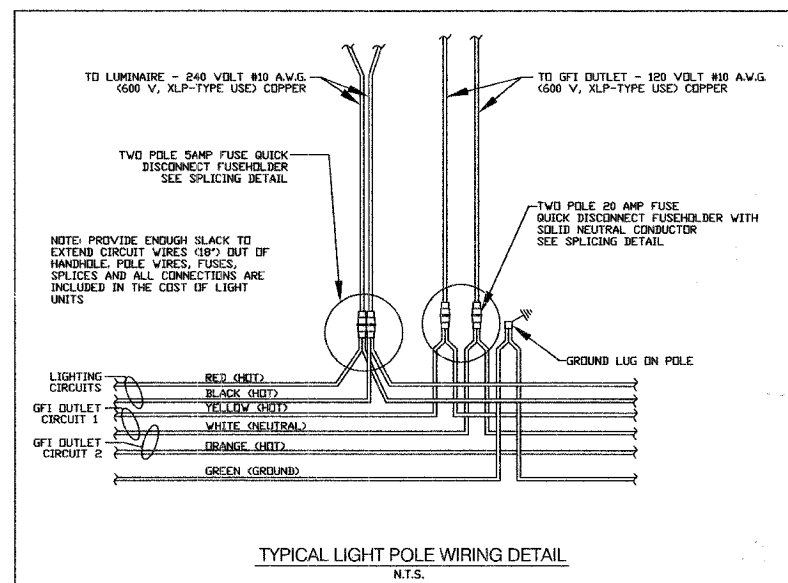
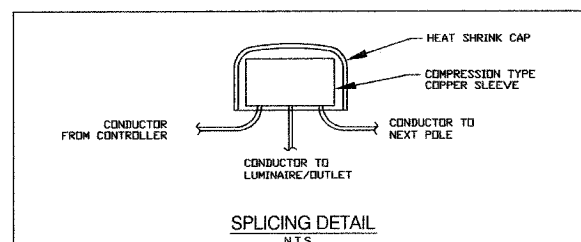
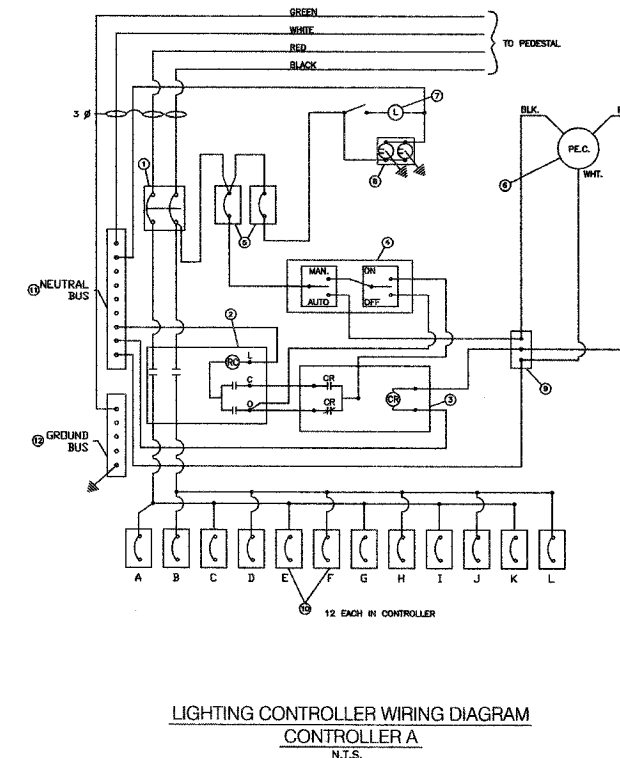
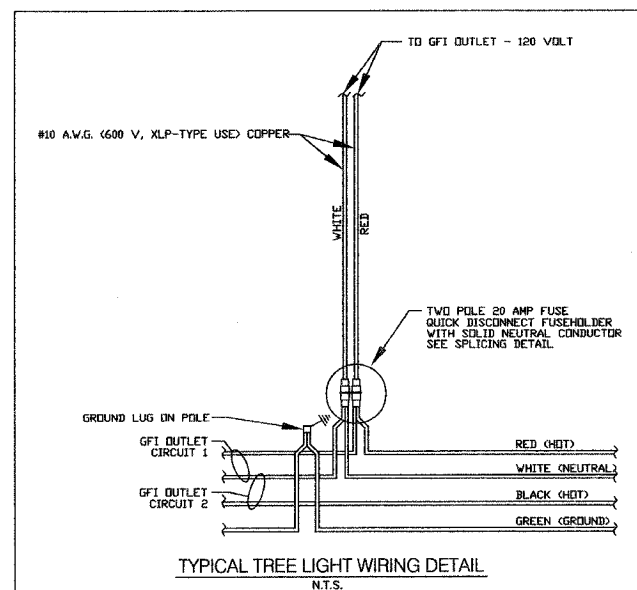


NO.	ITEM
1	CIRCUIT BREAKER - 200 AMP., 2-POLE, 120 V SURFACE MOUNTED ITE OR EQUAL - 600V RATED *
2	CONTACTOR - REMOTE CONTROL, 200 AMP., 2 POLE, 120V COIL, WITH MOUNTING PANEL SQUARE-D OR EQUAL - 600V RATED
3	CONTROL RELAY - 2-WIRE ASCO NO. 47 OR EQUAL IN 4" BOX
4	SWITCH - H.O.A. (HAND-OFF-AUTO) SQUARE-D OR EQUAL
5	CIRCUIT BREAKER - 20 AMP., 1-POLE, 120V THERMO-MAGNETIC, SURFACE MTD., WESTINGHOUSE OR EQUAL - 600V RATED *
6	PHOTOCELL CONTROL WITH TWIST-LOCK RECEPTACLE FISHER-PIERCE OR EQUAL DOUBLE POLE - DOUBLE THROW W/2 - MIN. DELAY
7	LAMP - INCANDESCENT, 100W., IN PORCELAIN HOLDER, MTD. ON 4" BOX
8	RECEPTACLE - GROUND FAULT, 20 AMP., MTD. IN 4" BOX
9	PHOTOCELL TERMINAL BLOCK
10	CIRCUIT BREAKERS, 30 AMP., 1-POLE, 120V, THERMO-MAGNETIC SURFACE MTD., ITE OR EQUAL - 600V RATED 2 POLE FUSES WERE SPECIFIED *
11	NEUTRAL BUS - COPPER, 11/4" X 12" X 1/4" THICK, PAINTED WHITE
12	GROUND BUS - COPPER, 11/4" X 12" X 1/4" THICK, PAINTED GREEN

SCHEDULE OF DEVICES
N.T.S.



REVISIONS	
NAME	DATE

ILLINOIS DEPARTMENT OF TRANSPORTATION
F.A.U.
YORK ROAD

LIGHTING DETAILS

SCALE: NTS
DATE: 12/22/07
DRAWN BY: BCD
CHECKED BY: JDM