

F.A. RTE.	SECTION	COUNTY	TOTAL SHEETS	SHEET NO.
2560	08-00139-00-RS	DUPAGE	22	1

CONTRACT NO. 63030

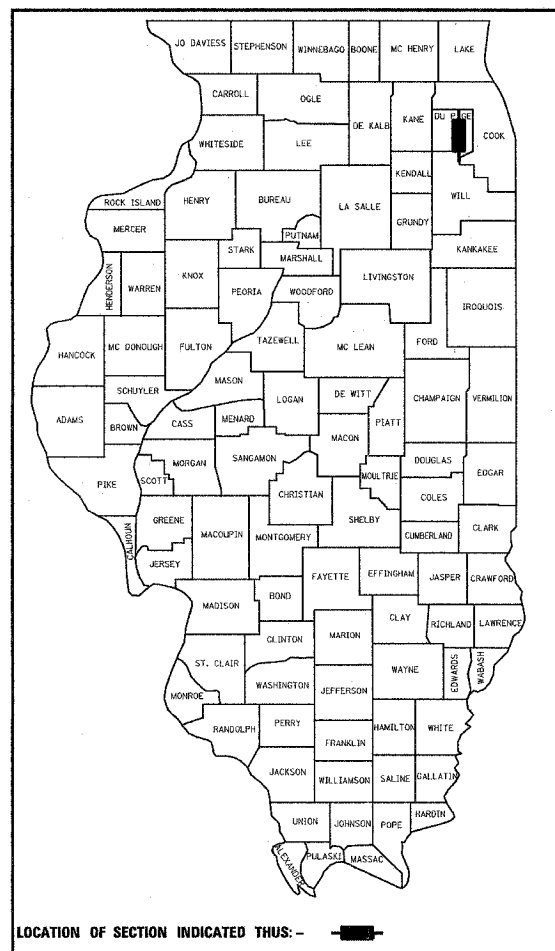
INDEX OF SHEETS

SHEET NO.	DESCRIPTION
1	TITLE
2	GENERAL NOTES, STANDARDS
3	SUMMARY OF QUANTITIES
4	TYPICAL SECTIONS
5-11	RESURFACING PLAN
12-18	PAVEMENT MARKING PLAN
19-22	DISTRICT ONE DETAILS

STATE OF ILLINOIS
DEPARTMENT OF TRANSPORTATION
DIVISION OF HIGHWAYS

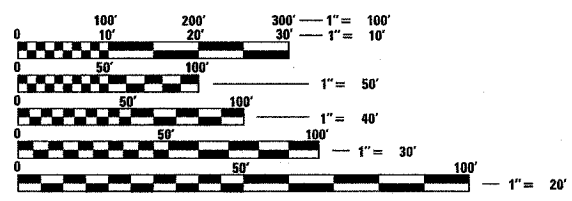
PLANS FOR PROPOSED FEDERAL AID HIGHWAY

**FAU 2560 ROUTE (NAPER BOULEVARD)
RESURFACING CHICAGO AVENUE TO OGDEN AVENUE
SECTION 08-00139-00-RS
PROJECT M-8003 (929)
CITY OF NAPERVILLE
DUPAGE COUNTY
JOB NO: C-91-148-08**



DESIGN DESIGNATION
27500 (06) ARTERIAL 4.3 (FD-20)

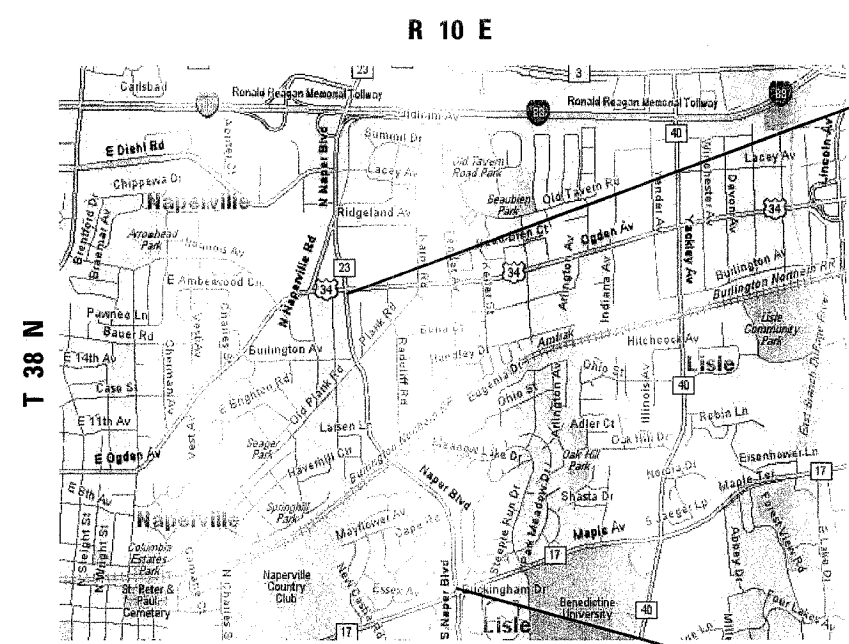
TRAFFIC DATA
ADT (2006) = 27,500
POSTED SPEED = 35 MPH



FULL SIZE PLANS HAVE BEEN PREPARED USING STANDARD ENGINEERING SCALES. REDUCED SIZED PLANS WILL NOT CONFORM TO STANDARD SCALES. IN MAKING MEASUREMENTS ON REDUCED PLANS, THE ABOVE SCALES MAY BE USED.

J.U.L.I.E.
JOINT UTILITY LOCATION INFORMATION FOR EXCAVATION
1-800-892-0123 OR 811

CONTRACT NO. 63030



**PROJECT LIMIT
STATION 83 + 55**

SHARLETHA D. JACOBSON
REGISTRAR
PROFESSIONAL ENGINEER
OF
ILLINOIS
4/11/08
[Signature]

**PROJECT LIMIT
STATION 13 + 75**

LOCATION MAP
NOT TO SCALE

GROSS LENGTH AND NET LENGTH = 6980.00 FEET

**STATE OF ILLINOIS
DEPARTMENT OF TRANSPORTATION
DIVISION OF HIGHWAYS**

Approved April 4 2008
[Signature]
CITY OF NAPERVILLE, CITY ENGINEER

Passed April 10 2008
[Signature]
DISTRICT 1 ENGINEER OF LOCAL ROADS AND STREETS

Released for Bid
Based on Limited
Review APRIL 10, 2008
[Signature]
DEPUTY DIRECTOR OF HIGHWAYS, REGION 1 ENGINEER

**PRINTED BY THE AUTHORITY
OF THE STATE OF ILLINOIS**

PLANS PREPARED BY:
URS
100 S. WACKER DR., SUITE 500 TEL (312)-939-1000
CHICAGO IL, 60606 FAX (312)-939-4198

FIELD ENGINEER: MARILYN SOLOMON, 847-705-4407