

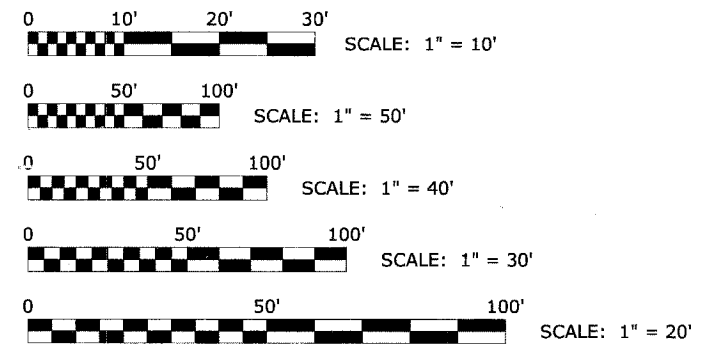
**STATE OF ILLINOIS  
DEPARTMENT OF TRANSPORTATION  
DIVISION OF HIGHWAYS  
PLANS FOR PROPOSED  
FEDERAL AID HIGHWAY  
REPLACEMENT OF PEDESTRIAN BRIDGE OVER  
SALT CREEK NEAR  
BROOKFIELD AVENUE AND PRAIRIE AVENUE  
SECTION NO. : 06-00120-00-BR  
FEDERAL PROJECT NO. : CMM-8003 (673)  
VILLAGE OF BROOKFIELD  
COOK COUNTY  
C-91-356-06**

ROUTE NO.	SECTION	COUNTY	TOTAL SHEETS	SHEET NO.
	06-00120-00-BR	COOK	8	1
ILLINOIS PROJECT C-91-356-06				
CONTRACT NO. 63032				

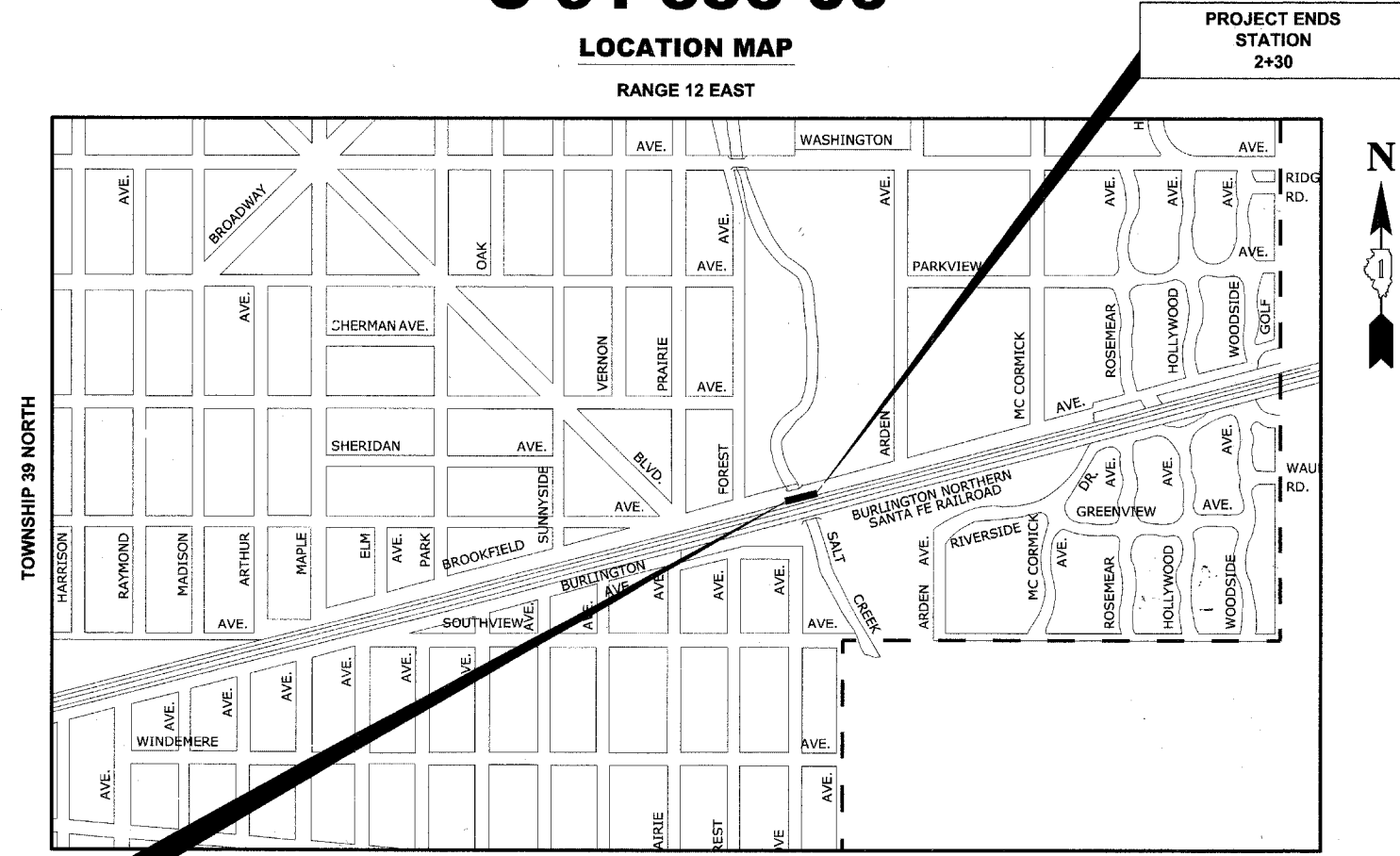


LOCATION OF SECTION INDICATED THIS:

PROJECT LOCATED IN THE VILLAGE OF BROOKFIELD



FULL SIZE PLANS HAVE BEEN PREPARED USING STANDARD ENGINEERING SCALES. REDUCED SIZED PLANS WILL NOT CONFORM TO STANDARD SCALES. IN MAKING MEASUREMENTS ON REDUCED PLANS, THE ABOVE SCALES MAY BE USED.



PROJECT BEGINS STATION 1+00

PROJECT ENDS STATION 2+30

**█ - AREA OF IMPROVEMENT**  
NOT TO SCALE

GROSS & NET LENGTH OF IMPROVEMENT = 130 FT. = 0.025 MI.

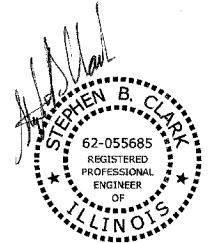
**STATE OF ILLINOIS  
DEPARTMENT OF TRANSPORTATION  
DIVISION OF HIGHWAYS**

APPROVED APRIL 8 2008  
*Mayor of Brookfield*  
VILLAGE OF BROOKFIELD, PRESIDENT

PASSED APRIL 10 2008  
*Christopher Holt*  
DISTRICT 1 ENGINEER OF LOCAL ROADS & STREETS

RELEASING FOR BID  
BASED ON LIMITED  
REVIEW APRIL 10 2008  
*Diana M. O'Keefe*  
DEPUTY DIRECTOR OF HIGHWAYS, REGION 1 ENGINEER

(PRINTED BY AUTHORITY OF THE STATE OF ILLINOIS)



DATE SIGNED: 04/08/08  
LICENSE EXPIRES: 11-30-09

EDWIN HANCOCK ENGINEERING COMPANY  
9933 ROOSEVELT ROAD PHONE : (708) 865-0300  
WESTCHESTER, ILLINOIS 60154

E.H.E. PROJECT NO. 125-06-29040



**Know what's below.  
Call before you dig.**

CONTRACT NO. 63032

FIELD ENGINEER: MARILIN SOLOMON (847) 705-4407

### GENERAL NOTES

#### FIELD OFFICE

THE CONTRACTOR WILL NOT BE ALLOWED TO SET UP A YARD OR FIELD OFFICE ON STATE OR VILLAGE PROPERTY WITHOUT WRITTEN PERMISSION FROM THE DEPARTMENT OR THE VILLAGE.

#### BARRICADES

THE CONTRACTOR SHALL PROVIDE AND INSTALL TWO (2) WEIGHTED SANDBAGS ON EACH TYPE II BARRICADE USED, ONE (1) WEIGHTED SANDBAG ACROSS EACH BOTTOM RAIL.

### INDEX OF SHEETS

**SHEET NO. DESCRIPTION**

1	COVER SHEET, LOCATION MAP
2	INDEX OF SHEETS, LEGEND, GENERAL NOTES, I.D.O.T. STANDARD DRAWINGS, & SUMMARY OF QUANTITIES
3	DETOUR SIGNING PLAN
4	EXISTING CONDITIONS PLAN AND PROFILE
5	PROPOSED IMPROVEMENTS PLAN AND PROFILE
6	PEDESTRIAN BRIDGE ABUTMENT DETAILS
7	PEDESTRIAN BRIDGE BRIDGE DETAILS
8	PEDESTRIAN BRIDGE LIGHTING LAYOUT DETAILS

#### STANDARDS

ANY REFERENCE TO STANDARDS THROUGHOUT THE PLANS OR SPECIAL PROVISIONS SHALL BE INTERPRETED TO BE THE LATEST STANDARD OF THE ILLINOIS DEPARTMENT OF TRANSPORTATION AS SHOWN ON THE INDEX OF SHEETS IN THE PLANS.

#### UNDERGROUND UTILITIES

BEFORE STARTING ANY EXCAVATION, THE CONTRACTOR SHALL CALL "JULIE" AT 800-892-0123 FOR FIELD LOCATIONS OF BURIED ELECTRICAL, TELEPHONE AND GAS FACILITIES. (48 HOURS NOTIFICATION IS REQUIRED).

THE LOCATIONS OF THE UNDERGROUND UTILITIES IF SHOWN ON THE PLANS HAVE BEEN OBTAINED BY FIELD SURVEYS AND SEARCHES OF AVAILABLE RECORDS. IT IS BELIEVED THAT DATA IS ESSENTIALLY CORRECT, BUT THE VILLAGE OF BROOKFIELD, THE ILLINOIS DEPARTMENT OF TRANSPORTATION AND/OR OTHER OFFICES AND AGENCIES ASSOCIATED WITH THE DEVELOPMENT OF THESE PLANS DO NOT GUARANTEE THEIR ACCURACY OR COMPLETENESS. THE CONTRACTOR WILL BE REQUIRED TO VERIFY THE EXACT LOCATION OF EACH FACILITY WITH THE UTILITY COMPANY, AND SHALL TAKE DUE CARE IN ALL PHASES OF THE CONSTRUCTION TO PROTECT ANY SUCH FACILITIES WHICH MAY BE AFFECTED BY THE WORK. ANY DAMAGE TO EXISTING UTILITIES SHALL BE REPAIRED AT THE CONTRACTOR'S EXPENSE.

THE CONTRACTOR SHALL COORDINATE CONSTRUCTION ACTIVITIES WITH UTILITY COMPANIES AND THE VILLAGE OF BROOKFIELD.

### SUMMARY OF QUANTITIES

CODE	PAY ITEM	UNIT	QUANTITY	
				<i>X932-2A</i>
67100100	MOBILIZATION	L SUM	1	1
70101800	TRAFFIC CONTROL AND PROTECTION (SPECIAL)	L SUM	1	1
XX006174	PEDESTRIAN BRIDGE REMOVAL	EACH	1	1
Z0048665	RAILROAD PROTECTIVE LIABILITY INSURANCE	L SUM	1	1
Z0050400	REMOVE AND REPLACE ANCHOR BOLTS	EACH	8	8
* X8040305	ELECTRICAL SERVICE CONNECTION	L SUM	1	1
XX007455	PRE-ENGINEERED STEEL TRUSS PEDESTRIAN BRIDGE	L SUM	1	1

\* DENOTES SPECIALTY ITEMS

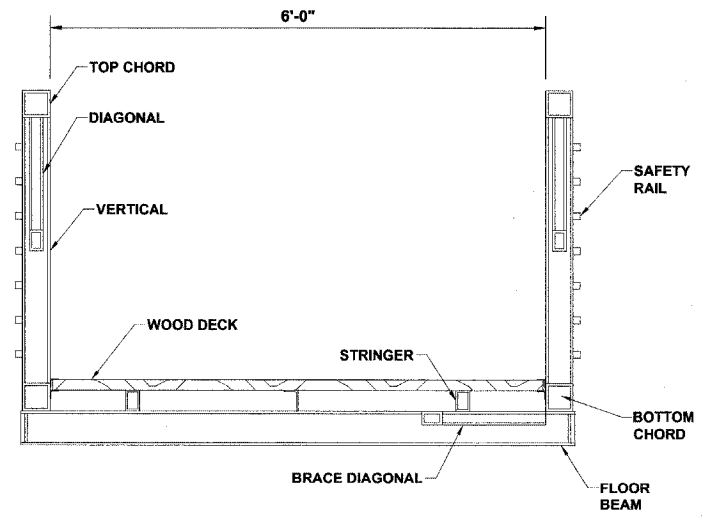
### I.D.O.T. STANDARD DRAWINGS

STANDARD NO.	TITLE OR DESCRIPTION
000001-05	STANDARD SYMBOLS, ABBREVIATIONS AND PATTERNS
701501-04	URBAN LANE CLOSURE, 2-LANE, 2-WAY, UNDIVIDED
701801-03	LANE CLOSURE, MULTILANE, 1W OR 2W CROSSWALK OR SIDEWALK CLOSURE
701901	TRAFFIC CONTROL DEVICES

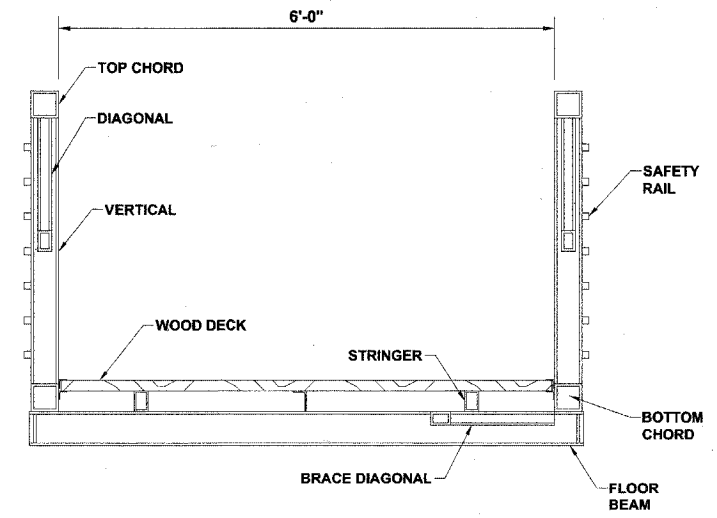
### LEGEND OF SYMBOLS

(TO BE USED IN CONJUNCTION WITH I.D.O.T. STANDARD 000001-05)

SYMBOL	DESCRIPTION
---	EXISTING RIGHT OF WAY
---	EXISTING CENTERLINE
-x-x-x-	EXISTING CHAIN LINK FENCE
---	EXISTING CURB AND GUTTER
⊗	EXISTING POWER POLE
⊕	EXISTING TREE
---	EXISTING OVERHEAD POWER LINE



**EXISTING TYPICAL SECTION**



**PROPOSED TYPICAL SECTION**

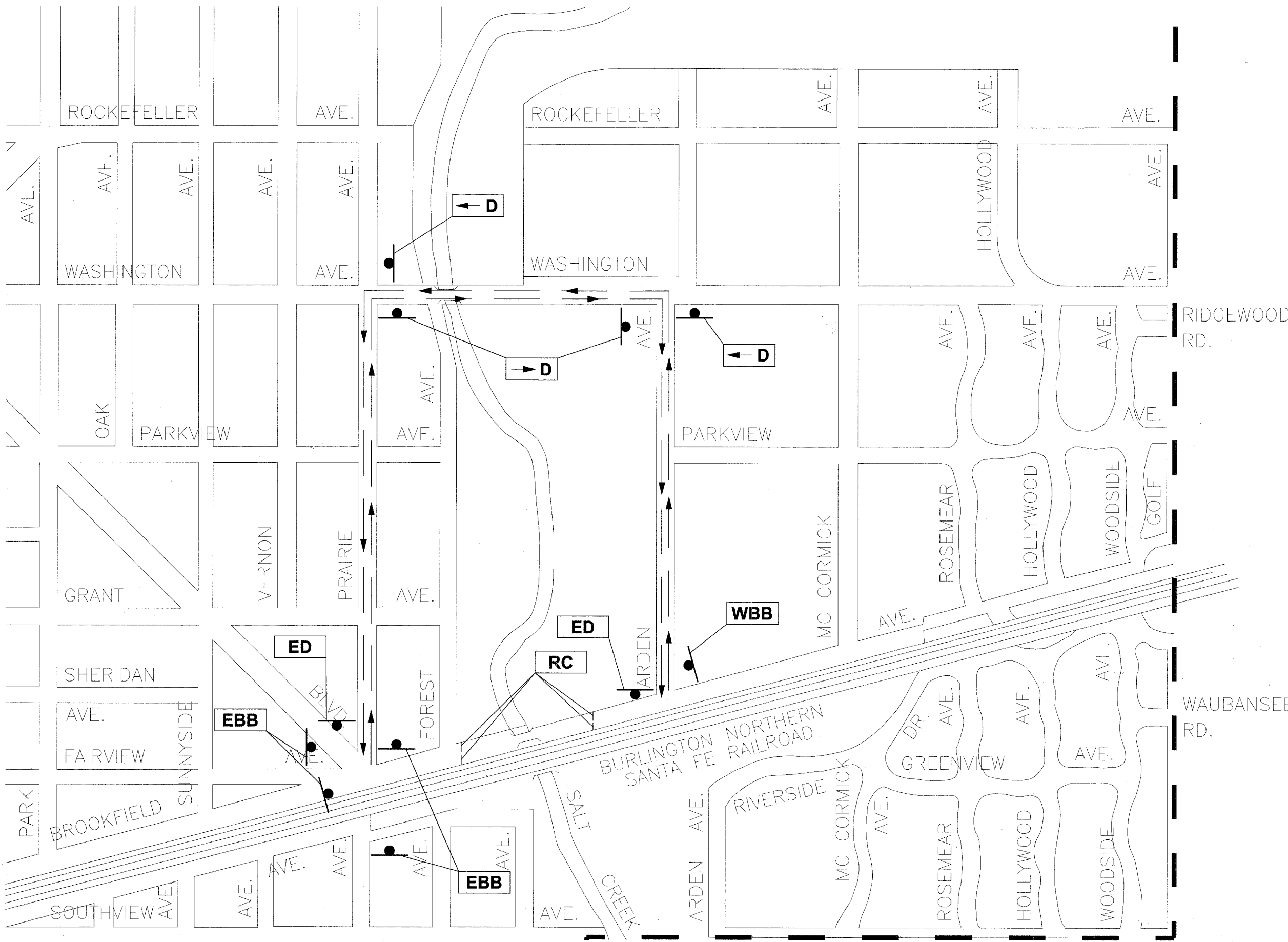
Drawing file: W:\Projects\12506290 - Pedestrian Bridge Development\INDEX.dwg Apr 04, 2008 - 8:58am

**HANCOCK ENGINEERING** ♦ Civil Engineers ♦ Municipal Consultants ♦ Established 1911  
 9933 Roosevelt Road Westchester, Illinois 60154-2780 Phone: 708/865-0300 Fax: 708/865-1212

**PEDESTRIAN BRIDGE REPLACEMENT VILLAGE OF BROOKFIELD, ILLINOIS**

**INDEX OF SHEETS, LEGEND OF SYMBOLS, GENERAL NOTES, & I.D.O.T. STANDARD DRAWINGS**

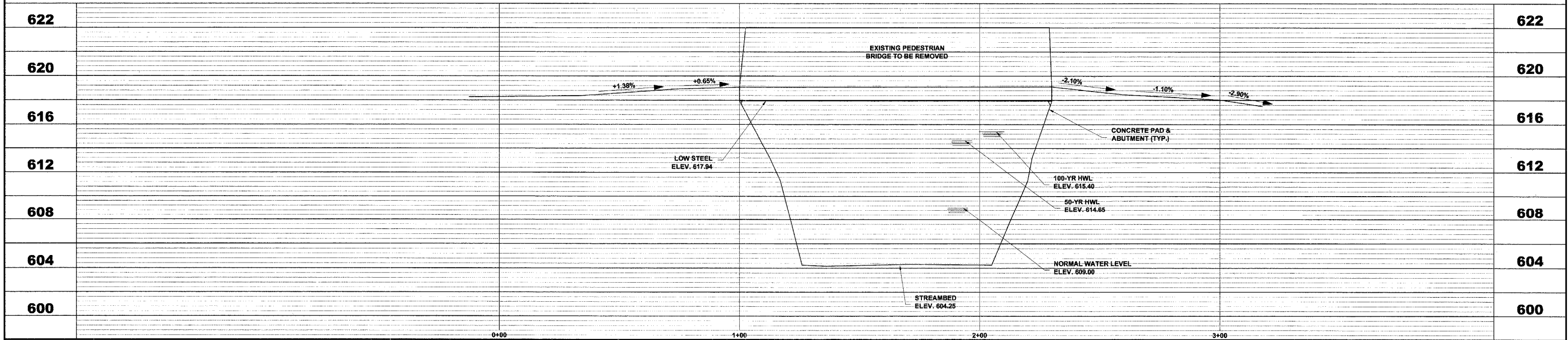
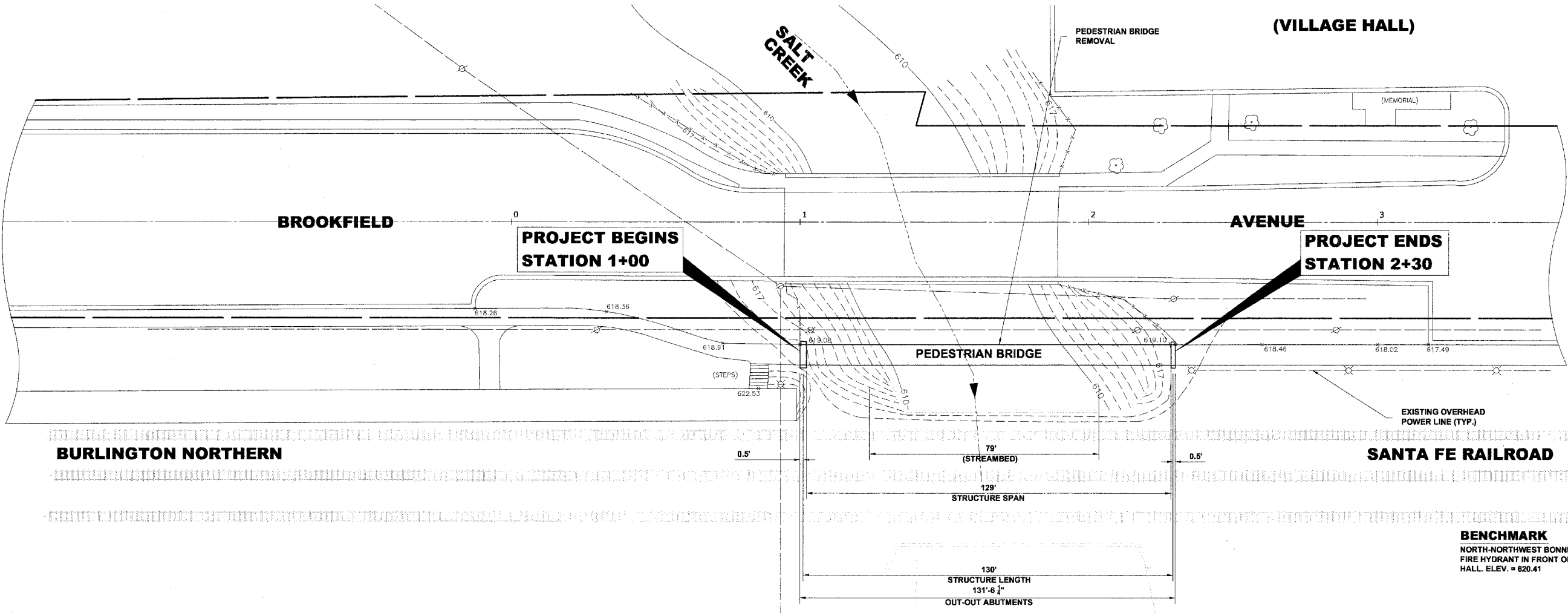
SCALE:	NOT TO SCALE	SHEET	2
DRAWN BY:	MK/LEV	OF	8
BOOK NO.:	BP/LS		
DATE:	3-7-08		
E.H.E. NO.:	125-06-29040		



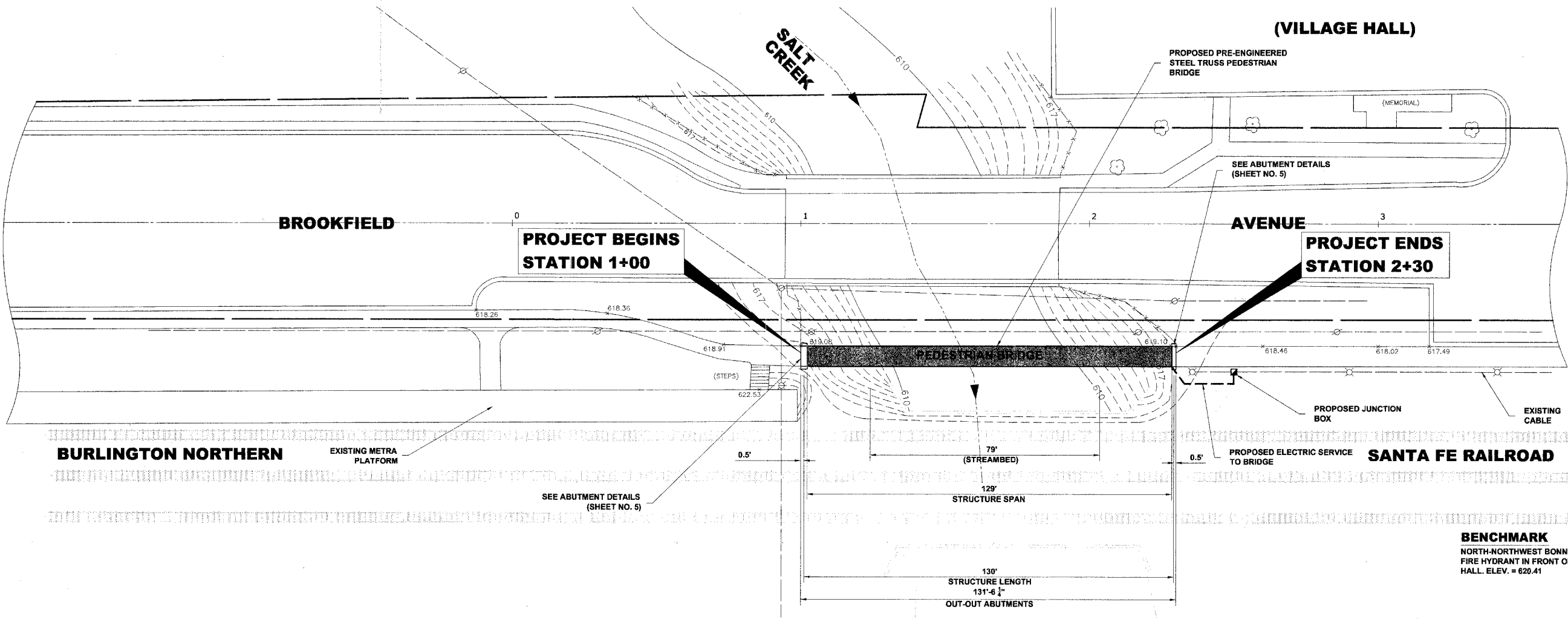
**LEGEND OF SIGNS**

SYMBOL	SIGN
	<b>DETOUR</b> M4-9L 30" X 24"
	<b>DETOUR</b> M4-9R 30" X 24"
	<b>EAST BOUND BROOKFIELD AVENUE USE WASHINGTON AVENUE BRIDGE</b> 48" X 30" ON TYPE III BARRICADE
	<b>WEST BOUND BROOKFIELD AVENUE USE WASHINGTON AVENUE BRIDGE</b> 48" X 30" ON TYPE III BARRICADE
	<b>ROAD CLOSED</b> R11-2 ON TYPE III BARRICADE 48" X 30"
	<b>END DETOUR</b> M4-8a 24" X 18"

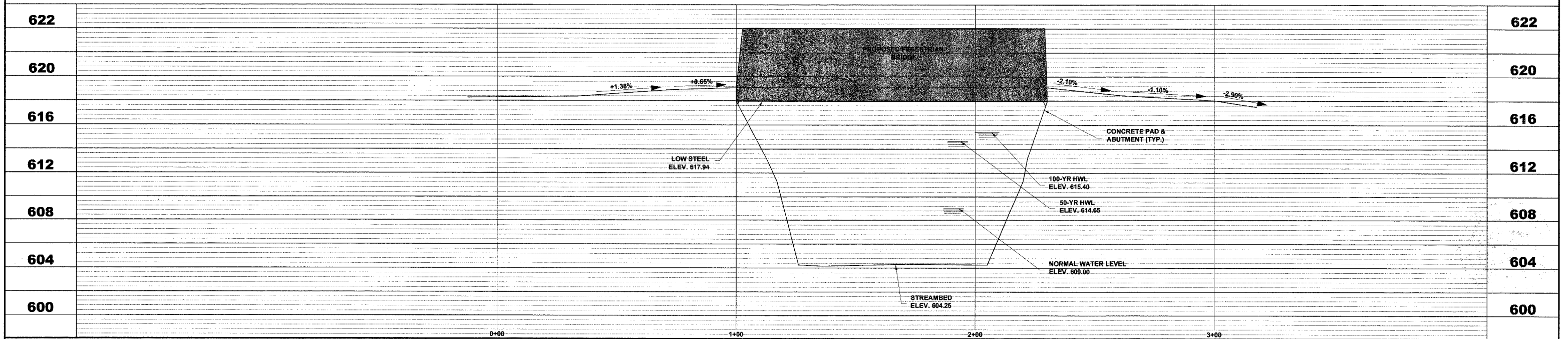
Drawing file: W:\Projects\1250290 - Pedestrian Bridge Development\DETOUR.dwg Mar 07, 2008 - 10:50am



Drawing file: W:\Projects\12506290 - Pedestrian Bridge Development\BROOKFIELD.dwg  
 Mar 07, 2008 - 10:19am



**BENCHMARK**  
 NORTH-NORTHWEST BONNET BOLT ON  
 FIRE HYDRANT IN FRONT OF VILLAGE  
 HALL. ELEV. = 620.41



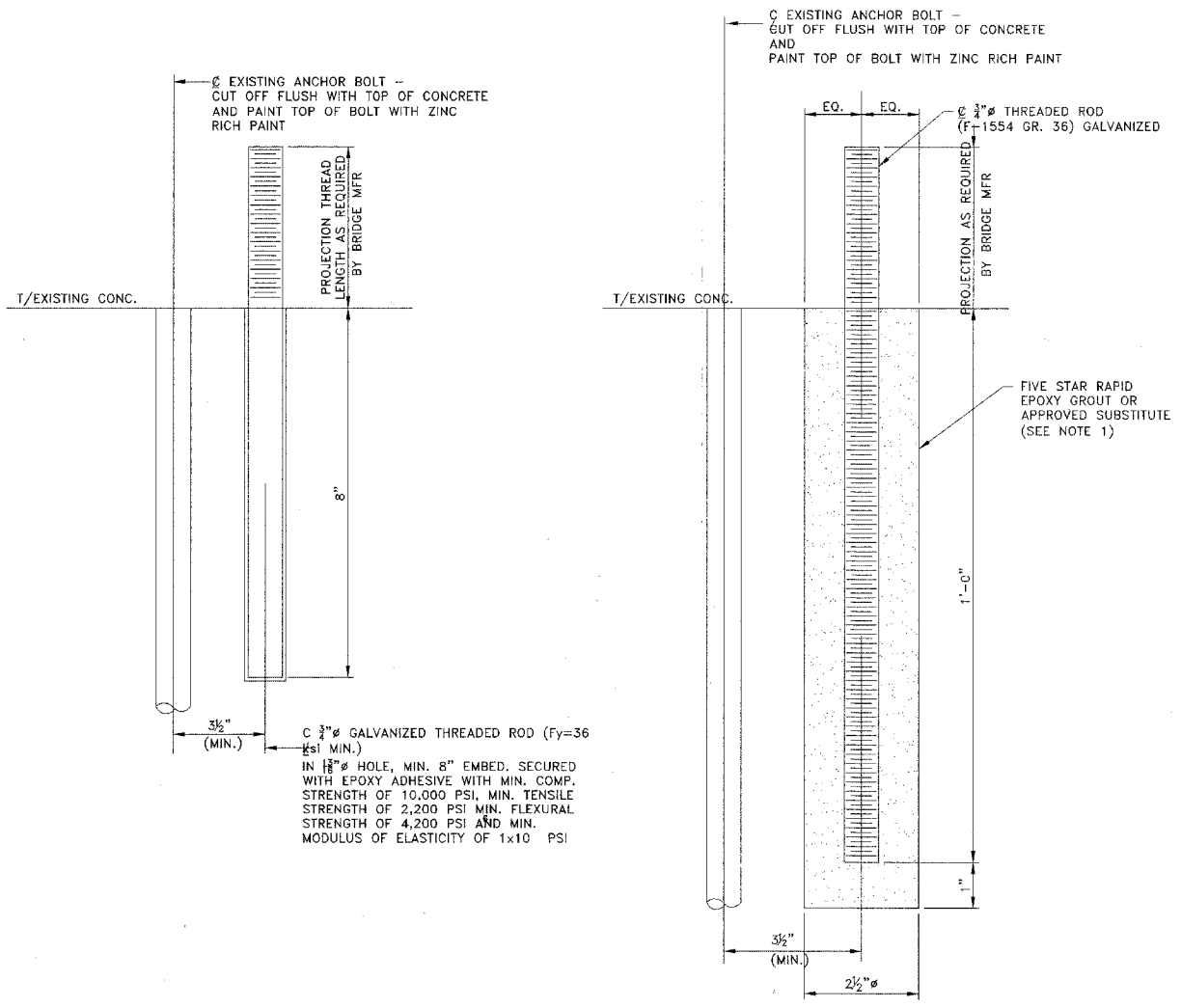
Drawing File: W:\Projects\12506290 - Pedestrian Bridge Development\BRB002.dwg  
 Mar 07, 2008 - 10:20am

**HANCOCK ENGINEERING**  
 ♦ Civil Engineers  
 ♦ Municipal Consultants  
 ♦ Established 1911  
 9933 Roosevelt Road  
 Westchester, Illinois 60154-2780  
 Phone: 708/865-8300  
 Fax: 708/865-1212

**PEDESTRIAN BRIDGE REPLACEMENT  
 VILLAGE OF BROOKFIELD, ILLINOIS**

**PEDESTRIAN BRIDGE  
 PROPOSED IMPROVEMENTS  
 PLAN AND PROFILE**

SCALE: 1"=20'H. & 1"=4'V.	SHEET <b>5</b> OF <b>8</b>
DRAWN BY: MK/LEV	
BOOK NO.: BP/LS	
DATE: 3-7-08	
REVISION:	E.H.E. NO.: 125-06-29040



**NOTE 1**  
 NONSHRINK EPOXY GROUT SHALL BE A 100% SOLIDS, PREMEASURED, PACKAGED SYSTEM CONTAINING THERMOSETTING EPOXY RESINS, EXPANSIVE ADDITIVES AND INERT FILLERS. GROUT SHALL BE PREPARED AND PLACED IN STRICT CONFORMANCE WITH MANUFACTURER'S WRITTEN INSTRUCTIONS. THE GROUT MATERIAL SHALL MEET ALL THE FOLLOWING TYPICAL PERFORMANCE CRITERIA WHEN CURED AT 73°F:

**A. COMPRESSIVE STRENGTH, ASTM C 579 B**  
 COMPRESSIVE STRENGTH  
 8 HOURS 8000 PSI (55.2 MPA)  
 1 DAY 13000 PSI (89.7 MPA)  
 7 DAYS 15000 PSI (103.5 MPA)  
 TESTED AT 180°F (82°C) 11000 PSI (75.9 MPA)

COMPRESSIVE MODULUS  
 8 HOURS 1.3 X 106 PSI (0.9 X 104 MPA)  
 1 DAY 1.6 X 106 PSI (1.1 X 104 MPA)  
 7 DAYS 1.7 X 106 PSI (1.2 X 104 MPA)  
 TESTED AT 180°F (82°C) 1.2 X 106 PSI (0.8 X 104 MPA)

**B. HEIGHT CHANGE, ASTM C 827**  
 90°F (32°C) POSITIVE EXPANSION

**C. EFFECTIVE BEARING AREA 95%**

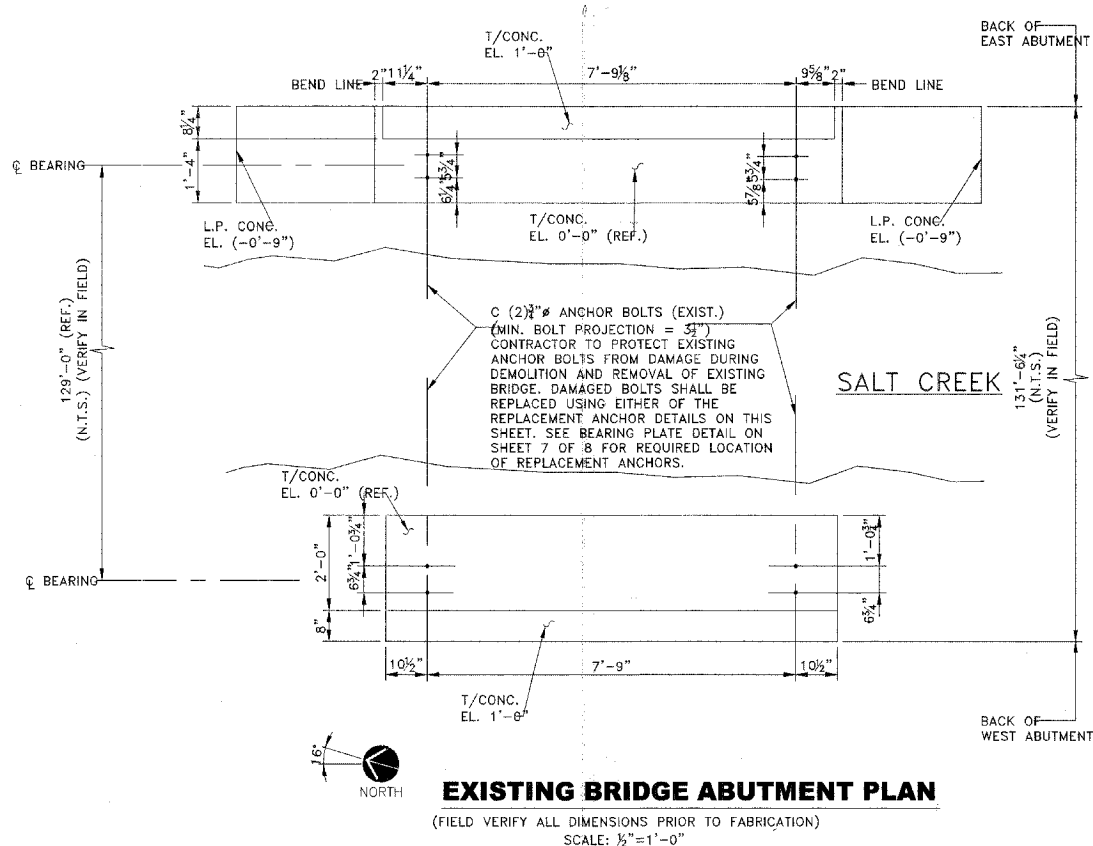
**D. TENSILE STRENGTH, ASTM C 307 2400 PSI (16.5 MPA)**

**E. CREEP, ASTM C 1181,**  
 1 YEAR, 600 PSI (4.1 MPA),  
 140°F (60°C) 1.8 X 10<sup>-3</sup> IN/IN


**F. FLEXURAL STRENGTH, ASTM C 580**  
 7 DAYS 5000 PSI (34.5 MPA)

**G. BOND TO CONCRETE, ASTM C 882 CONCRETE FAILURE**

**H. COEFFICIENT OF THERMAL EXPANSION,**  
 ASTM C 531 17 X 10<sup>-6</sup> IN/IN/°F (30 X 10<sup>-6</sup> MM/MM/°C)



REV.	DATE	ISSUE	BY
0	12/19/07	FOR BID	



**INGENII, LLC**  
 112 SOUTH ELMWOOD AVENUE  
 OAK PARK, ILLINOIS 60302  
 (708) 524-1363 PHONE/FAX  
 ingenii@ameritech.net

Village of Brookfield  
 Salt Creek Pedestrian  
 Bridge Replacement  
 BROOKFIELD, IL

**EXISTING BRIDGE  
 ABUTMENT PLAN**

THIS DRAWING IS THE PROPERTY OF INGENII, LLC AND IS TO BE USED ONLY IN CONNECTION WITH THE PERFORMANCE OF WORK BY INGENII, LLC. REPRODUCTION IN WHOLE OR PART FOR ANY OTHER PURPOSE IS EXPRESSLY FORBIDDEN. DIFFERENCES MAY EXIST BETWEEN THE ELECTRONIC FILES DELIVERED AND PRINTED HARD-COPY CONSTRUCTION DOCUMENTS. IN THE EVENT OF A CONFLICT BETWEEN THE SIGNED CONSTRUCTION DOCUMENTS AND ELECTRONIC FILES, THE SIGNED OR SEALED HARD-COPY CONSTRUCTION DOCUMENTS SHALL GOVERN.

REGISTERED SEAL:  
 STATE OF ILLINOIS  
 KENNETH W. FLOODY  
 03-4509  
 CIVIL ENGINEER  
 DATE: 12/19/07 EXPIRES: 11/30/10

DATE	PROJECT NO.	SHEET NO.
12/19/07		S-1
SCALE	REVISION	
AS NOTED		

SCALE:	AS NOTED	SHEET
DRAWN BY:	MK/LEV	6
BOOK NO.:	BP/LS	8
DATE:	3-7-08	
E.H.E. NO.:	125-06-29040	

Drawing file: W:\Projects\12506290 - Pedestrian Bridge Development\BRD02.dwg Mar 07, 2008 - 10:20am

**HANCOCK ENGINEERING**

- Civil Engineers
- Municipal Consultants
- Established 1911

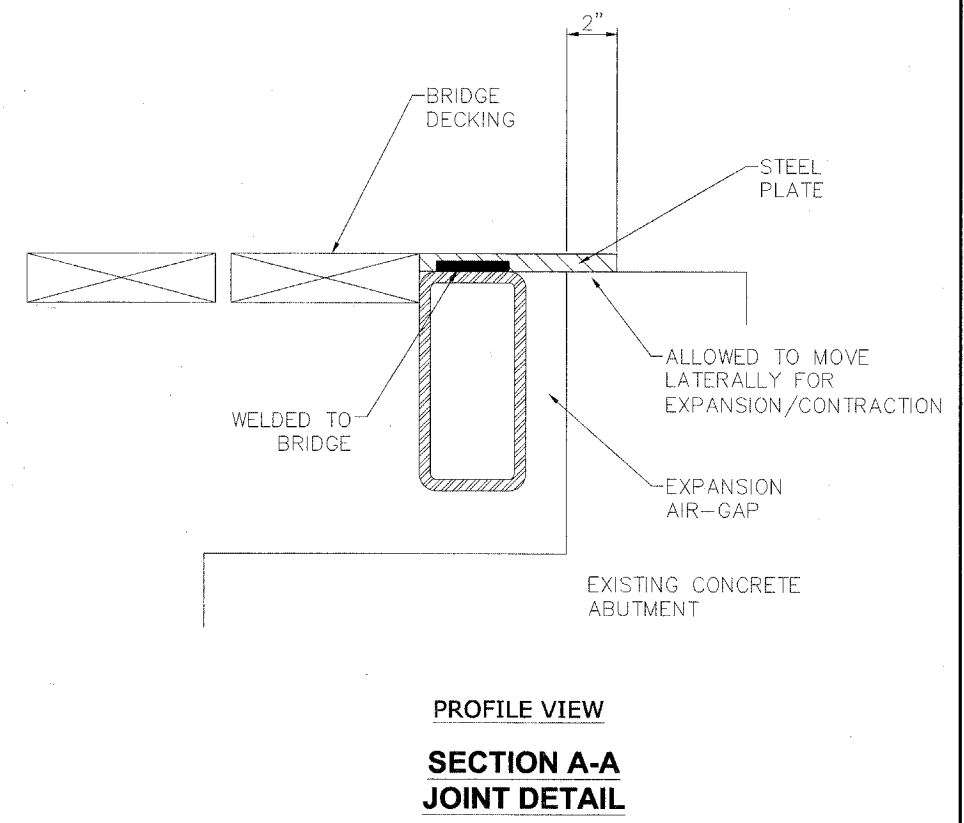
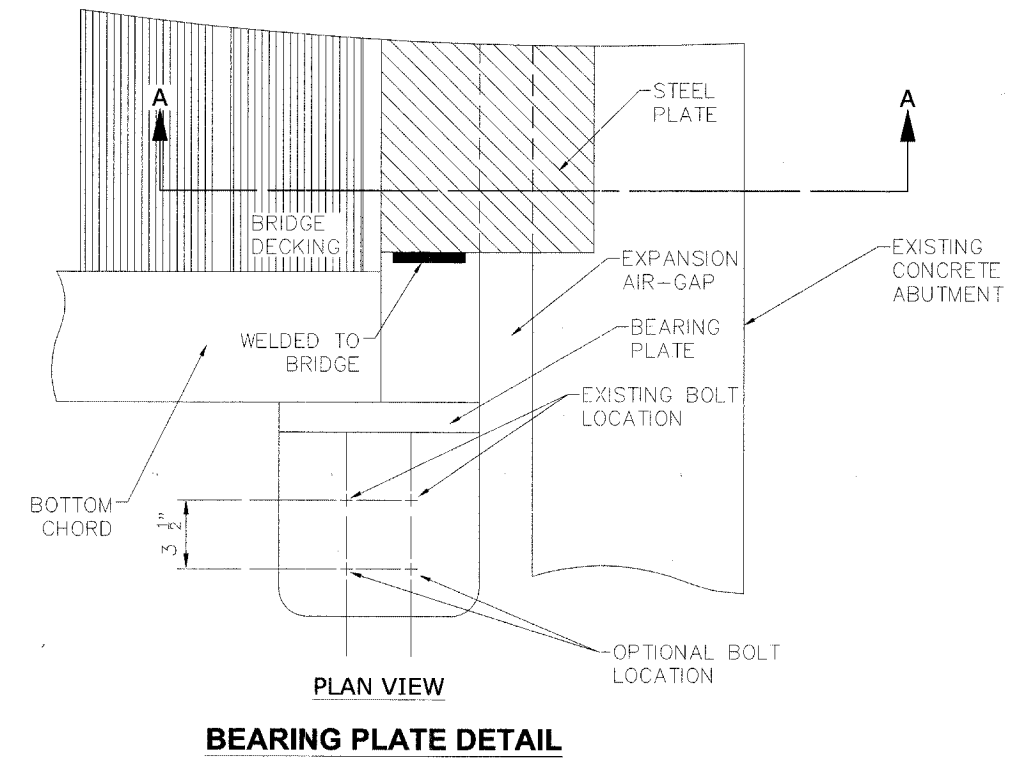
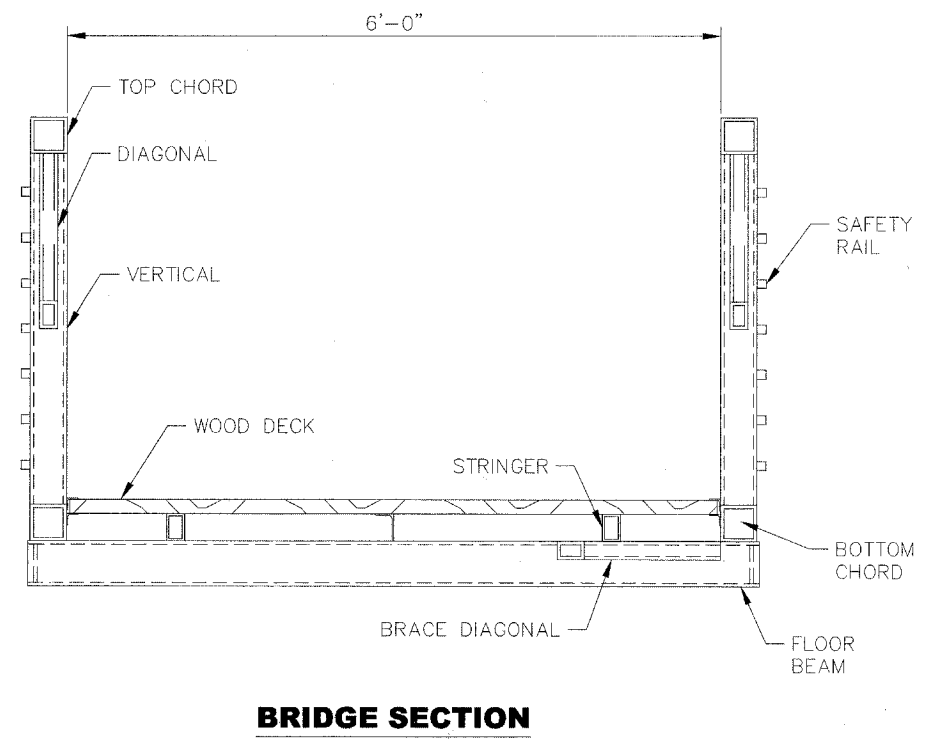
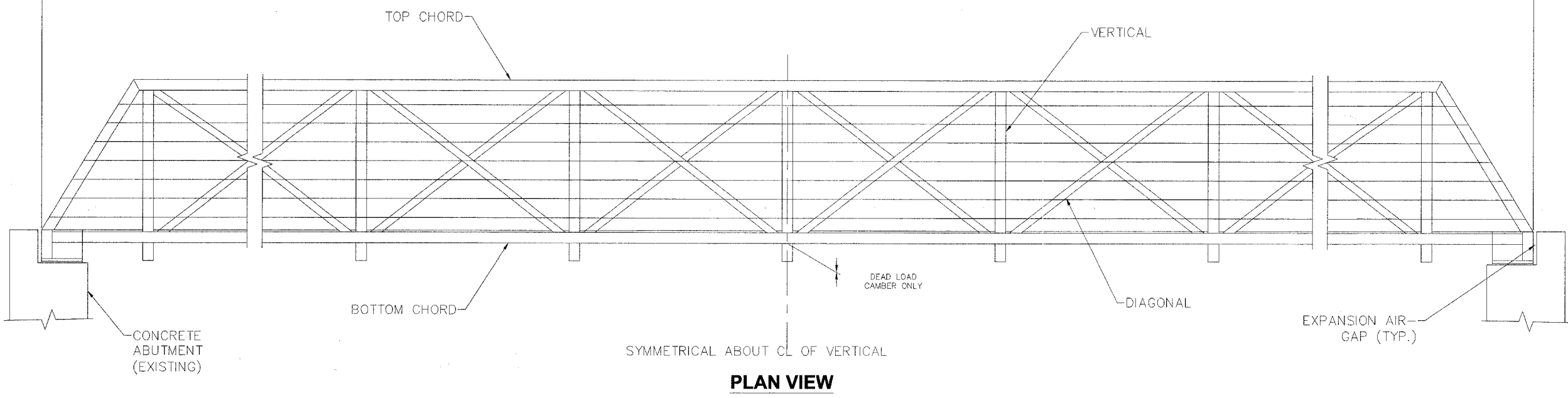
9933 Roosevelt Road  
 Westchester, Illinois 60154-2780  
 Phone: 708/865-0300  
 Fax: 708/865-1212

**PEDESTRIAN BRIDGE REPLACEMENT  
 VILLAGE OF BROOKFIELD, ILLINOIS**

**PEDESTRIAN BRIDGE  
 ABUTMENT DETAILS**

ROUTE NO.	SECTION	COUNTY	TOTAL SHEETS	SHEET NO.
	06-00120-00-BR	COOK	8	7
ILLINOIS PROJECT C-91-356-06				
CONTRACT NO. 63032				

TOTAL BRIDGE SPAN



Drawing file: W:\Projects\12506290 - Pedestrian Bridge Development\BRIDGE.dwg Mar 07, 2008 - 10:20am

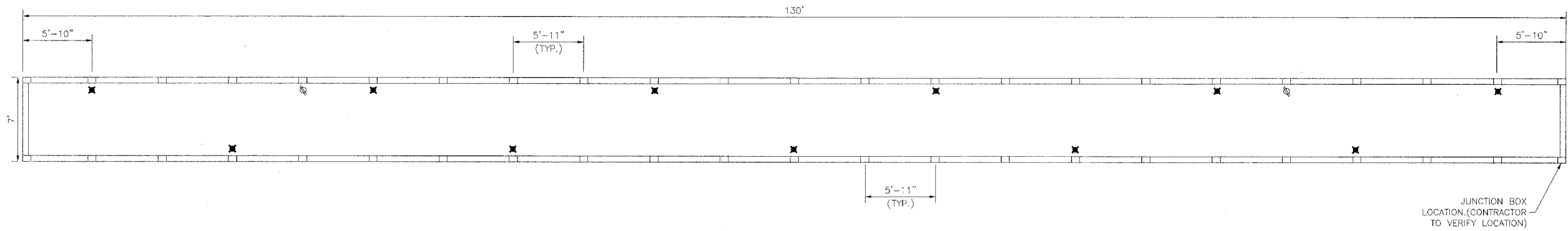
**HANCOCK ENGINEERING** ♦ Civil Engineers ♦ Municipal Consultants ♦ Established 1911

9933 Roosevelt Road  
Westchester, Illinois 60154-2780  
Phone: 708/865-0300  
Fax: 708/865-1212

**PEDESTRIAN BRIDGE REPLACEMENT  
VILLAGE OF BROOKFIELD, ILLINOIS**

**PEDESTRIAN BRIDGE  
BRIDGE DETAILS**

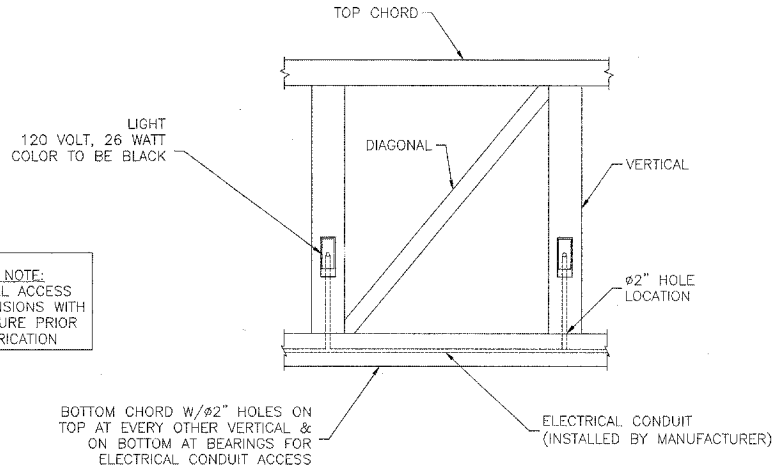
SCALE:	NOT TO SCALE	SHEET	7/8
DRAWN BY:	MK/LEV	OF	8
BOOK NO.:	BP/LS		
DATE:	3-7-08		
REVISION:			
E.H.E. NO.:	125-06-29040		



✱ = LIGHT LOCATIONS  
 ○ = FESTOON LOCATIONS

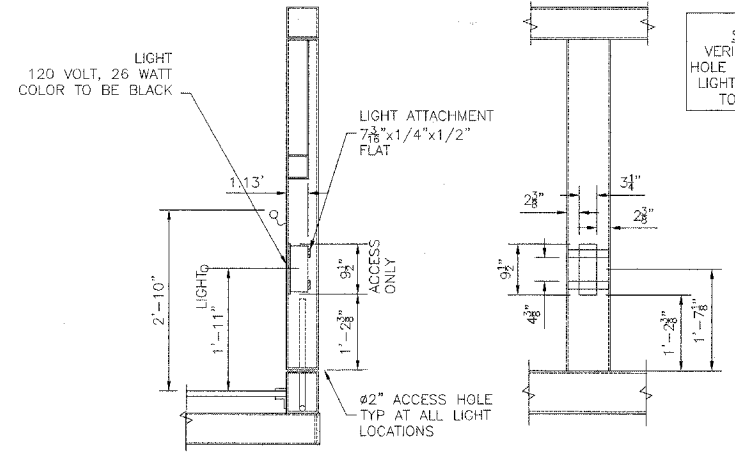
**LIGHT & OUTLET LAYOUT**

JUNCTION BOX LOCATION (CONTRACTOR TO VERIFY LOCATION)



SHOP NOTE:  
 VERIFY ALL ACCESS HOLE DIMENSIONS WITH LIGHT FIXTURE PRIOR TO FABRICATION

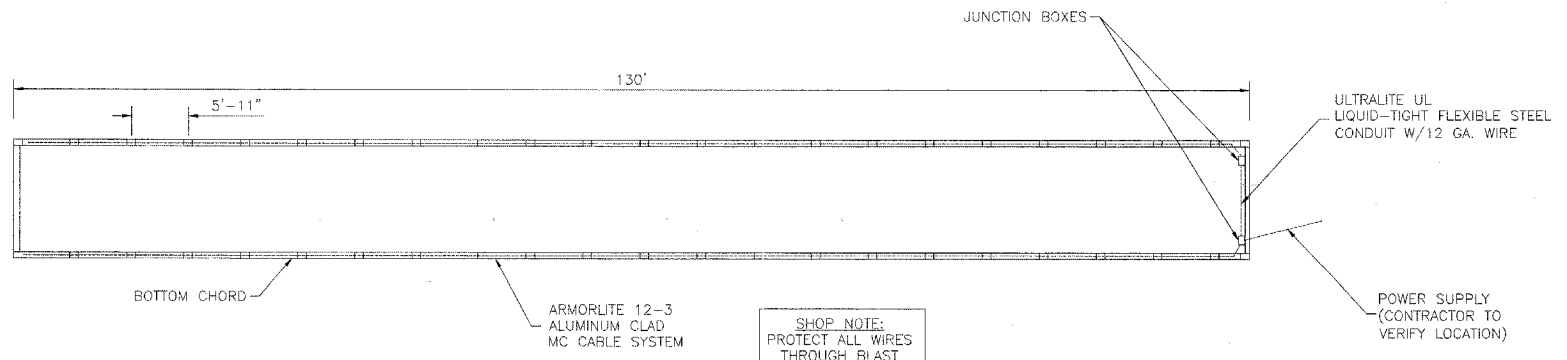
**LIGHT ELEVATION DETAILS**



SHOP NOTE:  
 VERIFY ALL ACCESS HOLE DIMENSIONS WITH LIGHT FIXTURE PRIOR TO FABRICATION

**LIGHT DETAILS**

SEE DECK LAYOUT FOR LOCATIONS



**ELECTRICAL LAYOUT**

SHOP NOTE:  
 PROTECT ALL WIRES THROUGH BLAST PROCESS

Drawing file: W:\Projects\12506290 - Pedestrian Bridge Development\BRIDGE.dwg  
 Mar 07, 2008 - 10:24am