

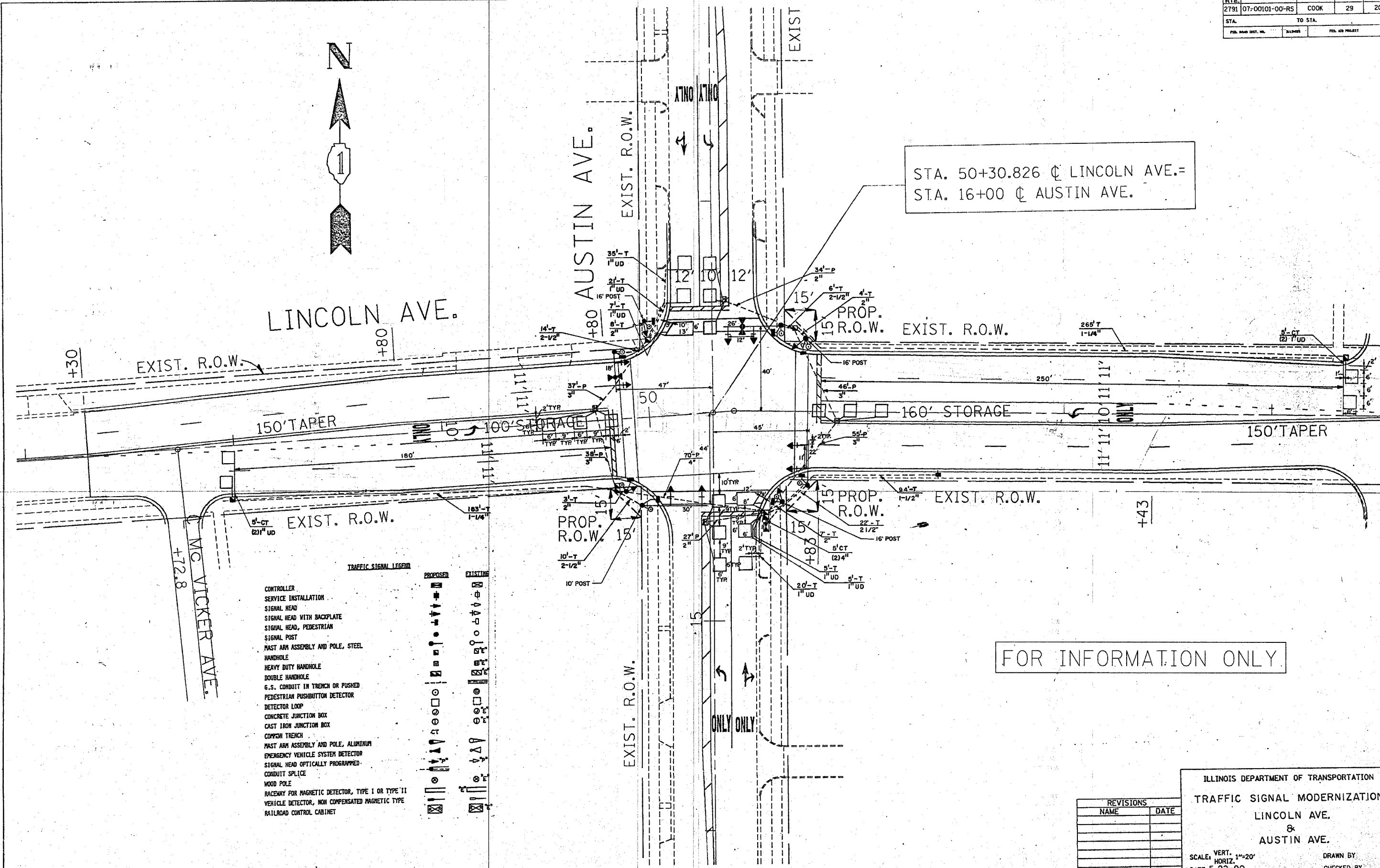
FALL R.T.E.	SECTION	COUNTY	TOTAL SHEETS	SHEET NO.
2791	07-00101-00-RS	COOK	29	20
STA.		TO STA.		
FED. ROAD DIST. NO.		BALANCE		FED. AID PROJECT



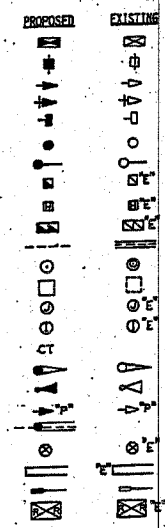
LINCOLN AVE.

+80 AUSTIN AVE.

STA. 50+30.826 @ LINCOLN AVE. =  
STA. 16+00 @ AUSTIN AVE.



- TRAFFIC SIGNAL LEGEND**
- CONTROLLER
  - SERVICE INSTALLATION
  - SIGNAL HEAD
  - SIGNAL HEAD WITH BACKPLATE
  - SIGNAL HEAD, PEDESTRIAN
  - SIGNAL POST
  - MAST ARM ASSEMBLY AND POLE, STEEL
  - HANDHOLE
  - HEAVY DUTY HANDHOLE
  - DOUBLE HANDHOLE
  - G.S. CONDUIT IN TRENCH OR PUSHED
  - PEDESTRIAN PUSHBUTTON DETECTOR
  - DETECTOR LOOP
  - CONCRETE JUNCTION BOX
  - CAST IRON JUNCTION BOX
  - COMMON TRENCH
  - MAST ARM ASSEMBLY AND POLE, ALUMINUM
  - EMERGENCY VEHICLE SYSTEM DETECTOR
  - SIGNAL HEAD OPTICALLY PROGRAMMED
  - CONDUIT SPLICE
  - WOOD POLE
  - RACEWAY FOR MAGNETIC DETECTOR, TYPE I OR TYPE II
  - VEHICLE DETECTOR, NON COMPENSATED MAGNETIC TYPE
  - RAILROAD CONTROL CABINET



FOR INFORMATION ONLY

REVISIONS	
NAME	DATE

ILLINOIS DEPARTMENT OF TRANSPORTATION  
**TRAFFIC SIGNAL MODERNIZATION**  
 LINCOLN AVE.  
 &  
 AUSTIN AVE.

SCALE: VERT. 1"=20'  
 HORIZ. 1"=20'  
 DATE 5-22-90

DRAWN BY  
 CHECKED BY

12-SEP-89 14:41:56  
 ZF22110.018P143579P1.DGN  
 REV: ZF22110.018P143579A.DGN: LTR  
 LEVELS = 35