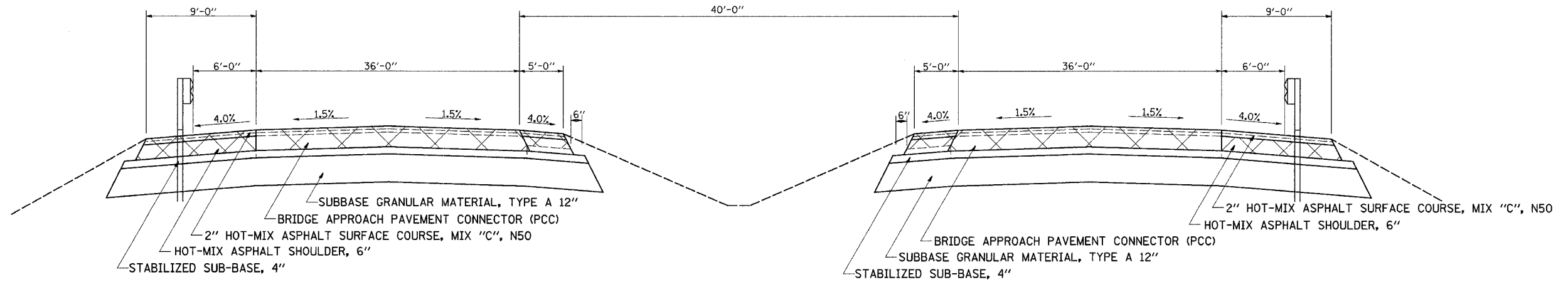


F.A.P. RTE.	SECTION	COUNTY	TOTAL SHEETS	SHEET NO.
301	3HBR-2	WINNEBAGO	171	13
STA.		TO STA.		
FED. ROAD DIST. NO.		ILLINOIS FED. AID PROJECT		

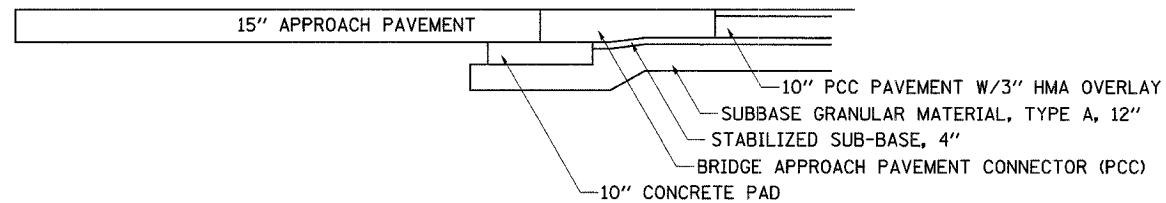
TYPICAL SECTIONS

US 20
CONNECTOR PAVEMENT
STA 991+86.4 TO STA 991+96.4
STA 994+90.9 TO STA 995+00.9

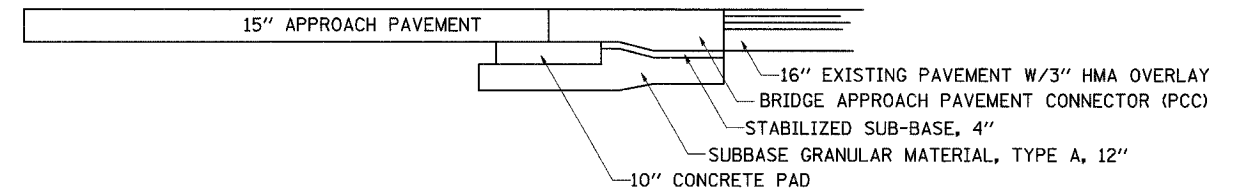




NOTE: HOT-MIX ASPHALT
RATE OF APPLICATION: 112lb/sy/In

US 20
CONNECTOR PAVEMENT DETAIL
STA 991+86.4 TO STA 991+96.4 EB
STA 994+90.9 TO STA 995+00.9 WB



US 20
CONNECTOR PAVEMENT DETAIL
STA 991+86.4 TO STA 991+96.4 WB
STA 994+90.9 TO STA 995+00.9 EB



-  EXISTING PAVEMENT
-  PAVEMENT REMOVAL

PLOT DATE = Fri, Mar 14, 2008 10:51:45 AM
FILE NAME = c:\projects\64292\301\301.dwg
PLOT SCALE = 1/16" = 1' / IN.
USER NAME = dmsdd