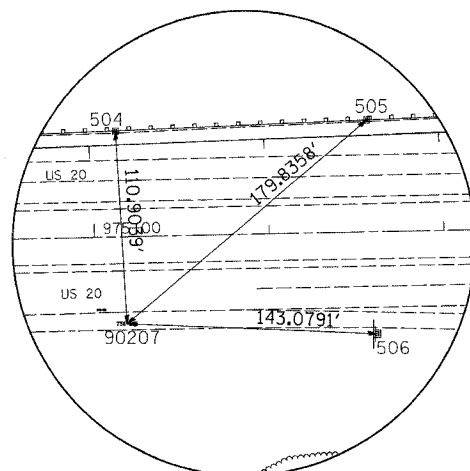
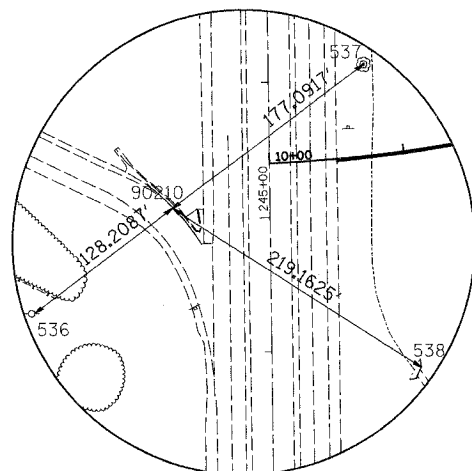


F.A.P. RTE.	SECTION	COUNTY	TOTAL SHEETS	SHEET NO.
301	3HBR-2	WINNEBAGO	171	31
STA.		TO STA.		
FED. ROAD DIST. NO.	ILLINOIS	FED. AID PROJECT		

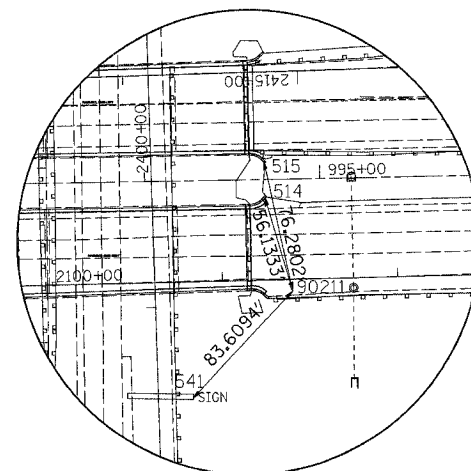
# HORIZONTAL & VERTICAL CONTROL



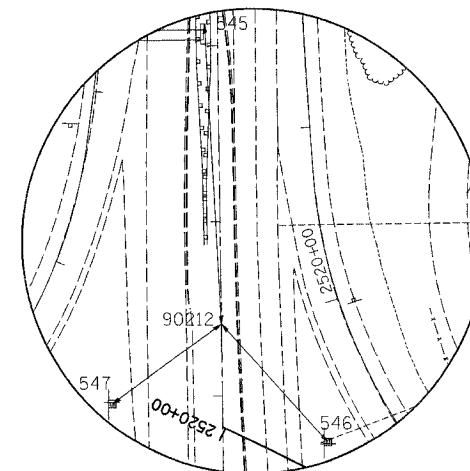
90207



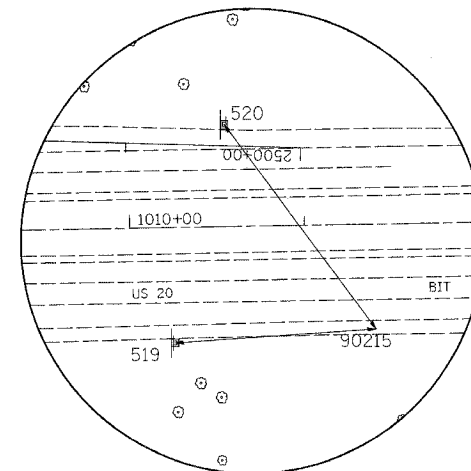
90210



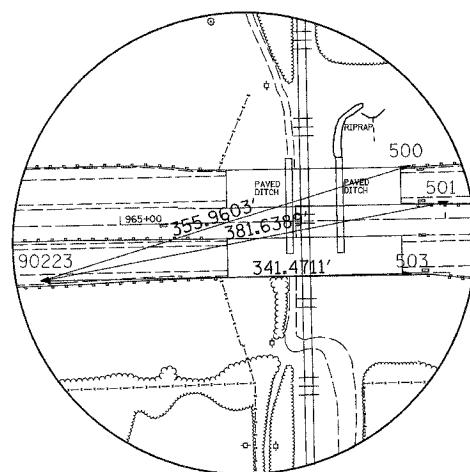
90211



90212



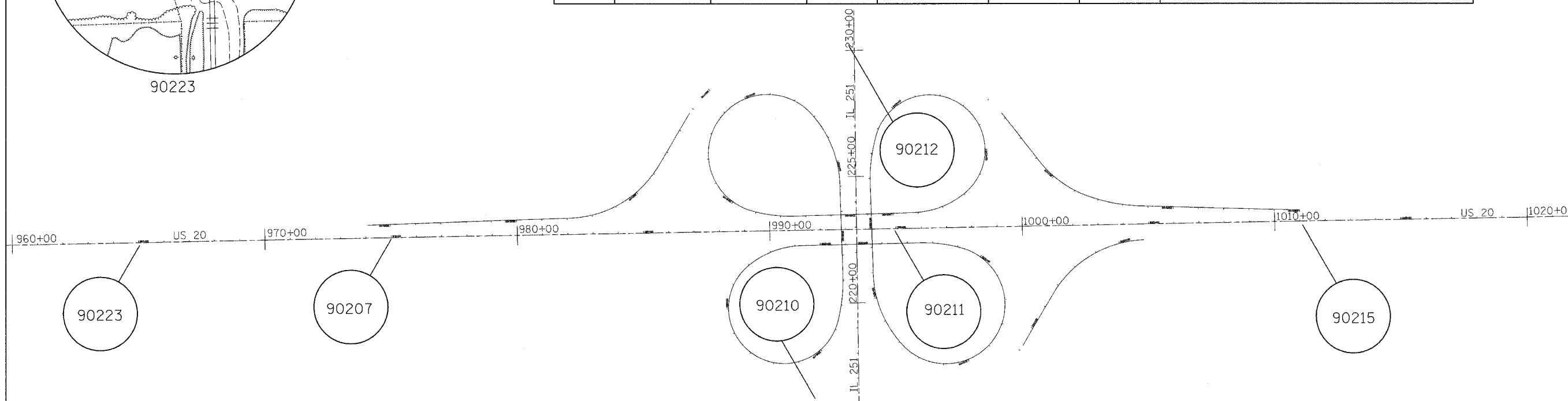
90215



90223

HORIZONTAL CONTROL POINTS							
POINT	NORTH	EAST	ELEVATION	CHAIN	STATION	OFFSET	DESCRIPTION
90207	2024349.3828	2591208.5028	736.1450	US20	975+17.8572	50.1228' RT	GPS CONTROL POINT, NAIL
90211	2024370.4218	2593174.0369	754.5800	US20	994+83.4533	64.2157' RT	GPS CONTROL POINT, NAIL
90215	2024403.7704	2594830.2553	765.4710	US20	1011+40.0032	60.4728' RT	GPS CONTROL POINT, NAIL
90223	2024329.8883	2590116.9593	754.0310	US20	964+26.1396	50.1058' RT	GPS CONTROL POINT, NAIL

HORIZONTAL CONTROL POINTS							
POINT	NORTH	EAST	ELEVATION	CHAIN	STATION	OFFSET	DESCRIPTION
90210	2023647.8485	2592970.9991	731.3200	IL251	245+07.7880	72.4225' LT	GPS CONTROL POINT, PIN
90212	2025281.8130	2593022.2620	731.3990	IL251	261+40.9527	0.0284' LT	GPS CONTROL POINT, PIN



PLOT DATE = Fri, Mar 14 09:41:02 2008  
 FILE NAME = c:\projects\64292\301.dwg  
 PLOT SCALE = 1/8" = 1'-0"  
 USER NAME = dward