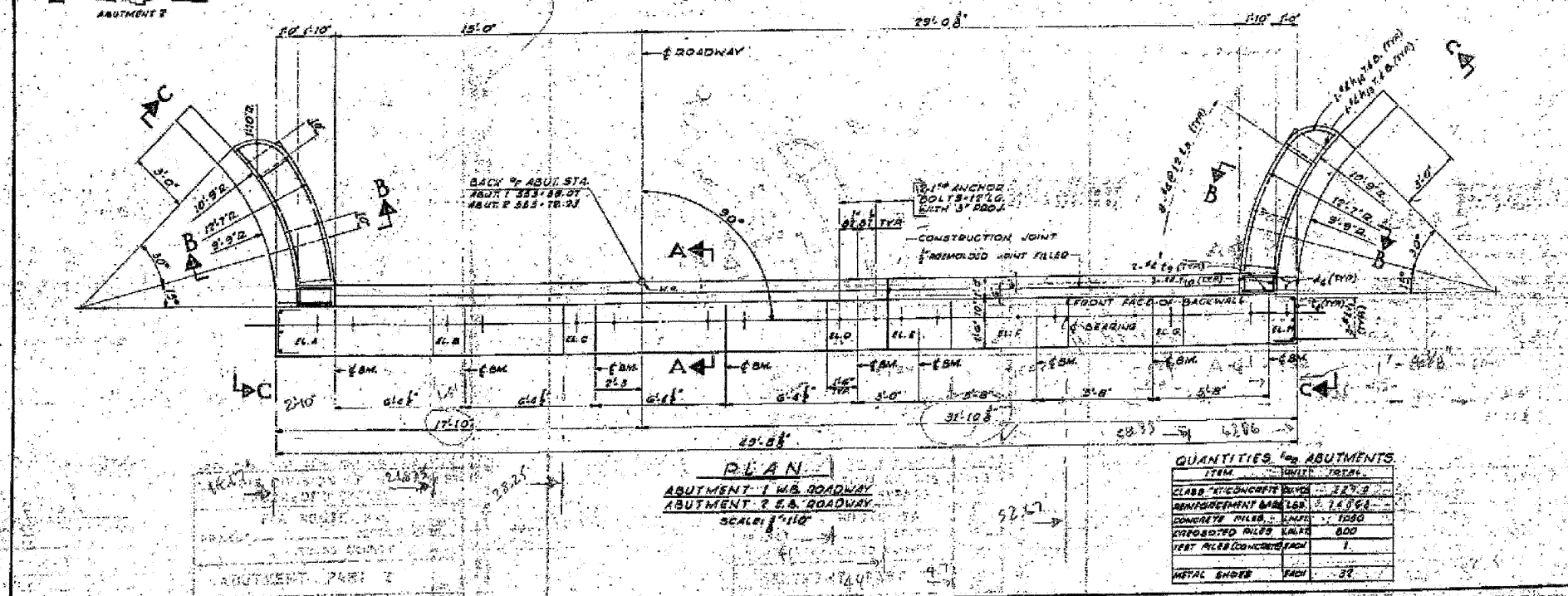
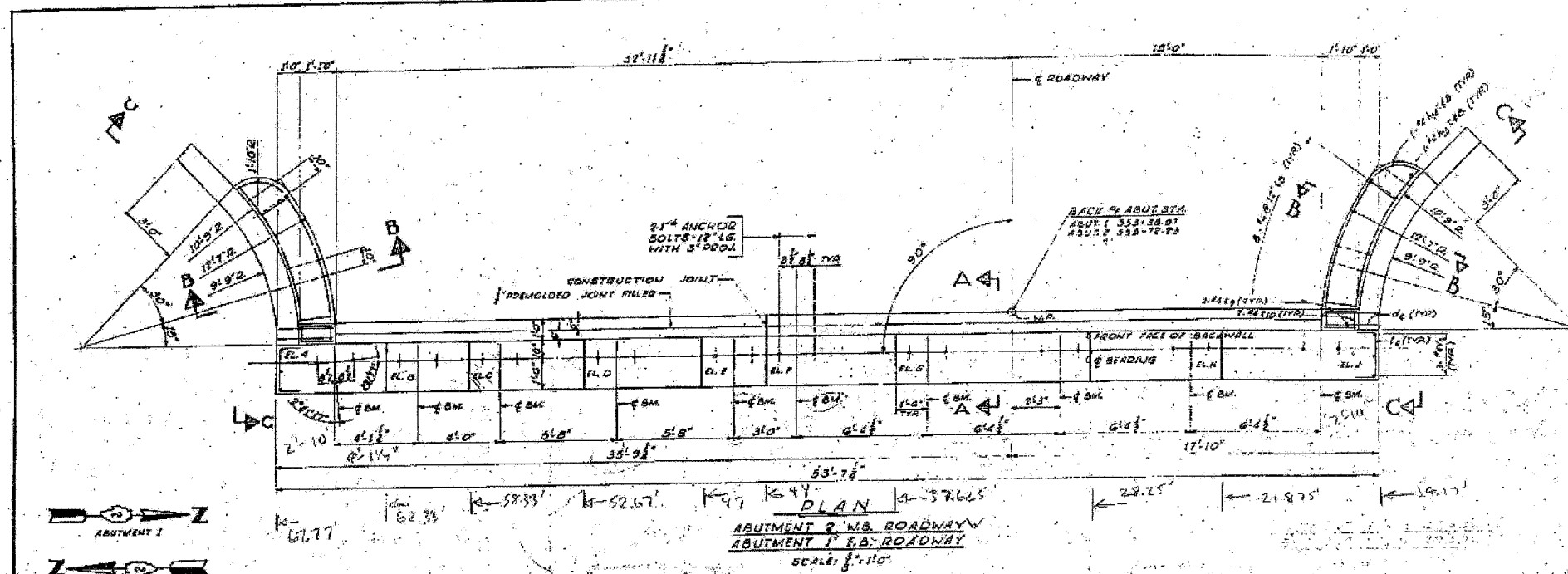


STATE OF ILLINOIS
DEPARTMENT OF TRANSPORTATION

ROUTE	SEC.	COUNTY	TOTAL SHEETS	SHEET NO.
194	3BR-2	WINNEBAGO	72	7

TABLE OF BEARING ELEVATIONS

LEV.	ABUTMENT	NO.	1	2	3	4
A	145.85	150.93	146.09	146.10		
B	149.20	151.38	148.68	149.20		
C	149.20	151.07	148.97	149.22		
D	149.27	151.99	149.09	149.17		
E	149.20	152.10	149.20	149.10		
F	149.09	152.17	149.27	149.19		
G	148.97	152.23	149.33	149.07		
H	148.08	149.20	149.32	149.98		
J		151.30	148.40			



NOTES
FOR GENERAL NOTES SEE SHEET 2.
FOR REINFORCING SCHEDULE SEE SHEET 3.
WORK THIS DRAWING WITH SHEET 1 & 2.
PILE DATA:
ABUTMENTS:
30 TON CONCRETE PILES.
ESTIMATED LENGTH - 30 FT.
NUMBER REQD. - 35.
PIPING WALLS:
20 TON CONCRETE PILES.
ESTIMATED LENGTH - 25 FT.
NUMBER REQD. - 37.
EACH SHOD WITH A METAL SHOD.

QUANTITIES FOR ABUTMENTS

ITEM	UNITS	TOTAL
CLASS 4 CONCRETE PILES		229.2
REINFORCEMENT BAR LBS.		14,164
CONCRETE PILES - LINE		1550
CONCRETE PILES - AREA		800
METAL SHODS	EA	32

ILLINOIS DIVISION OF HIGHWAYS
ROCKFORD BYPASS

F. A. ROUTE 194
SECTION 3BR-2

PROJECT: WINNEBAGO COUNTY

ABUTMENT PART 1

SHEET NO. 7	F.A.P. RTE. 301	SECTION 3HBR-2	COUNTY WINNEBAGO	TOTAL SHEETS 171	SHEET NO. 76
19 SHEETS	CONTRACT NO. 64292		ILLINOIS FED. AID PROJECT		