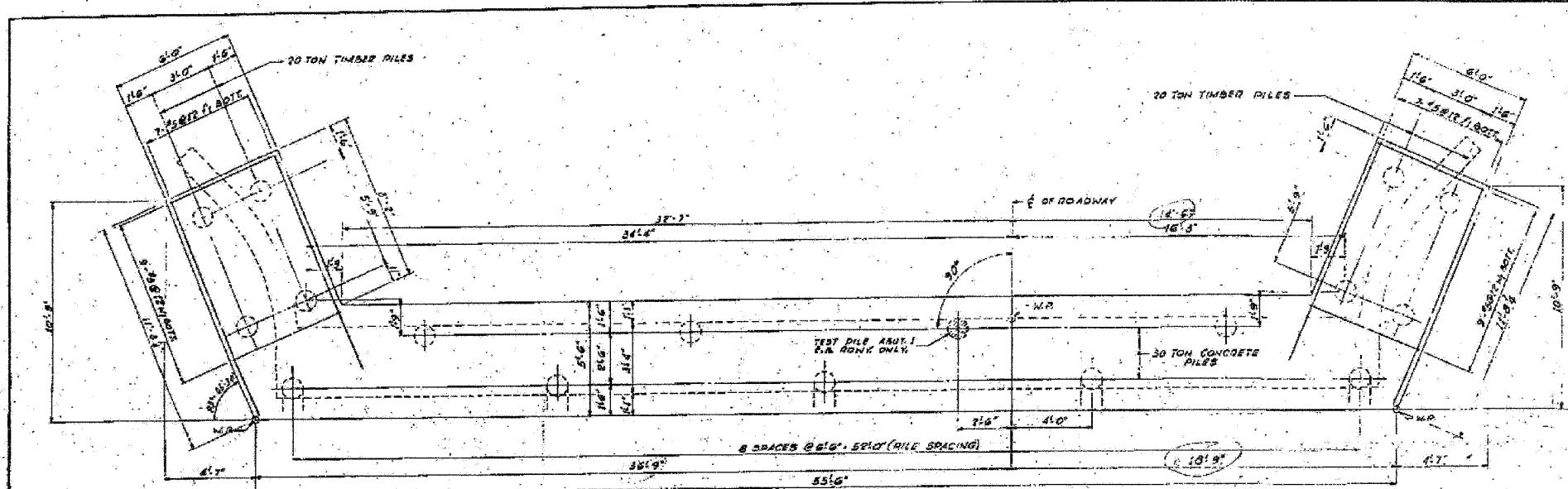
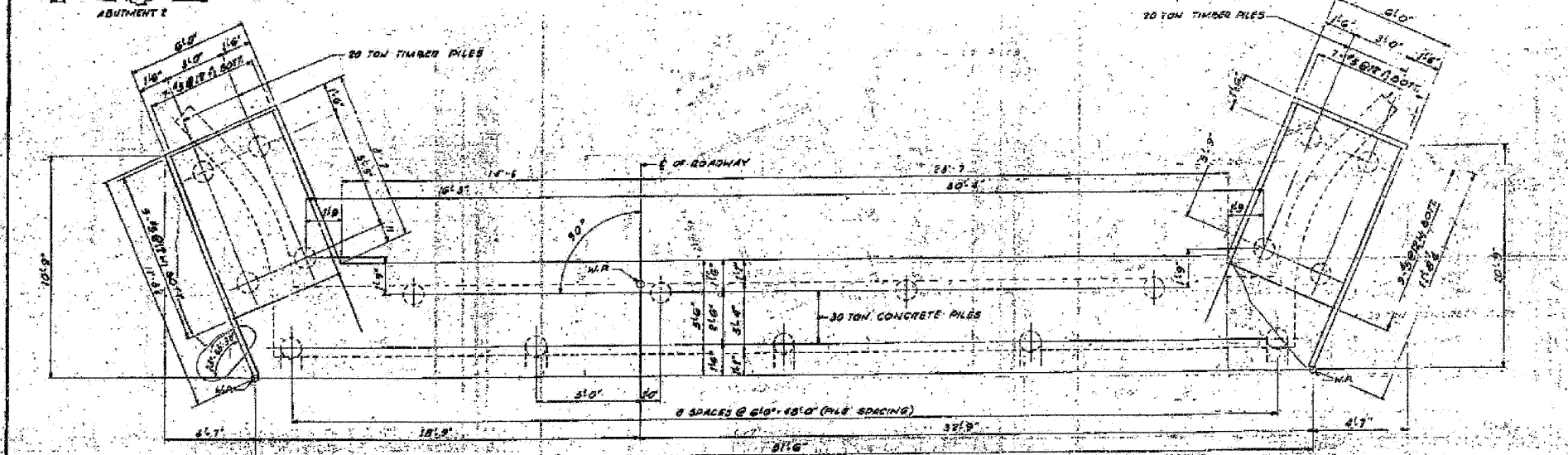
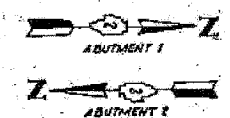


STATE OF ILLINOIS
DEPARTMENT OF TRANSPORTATION

ROUTE NO.	SEC.	COUNTY	SECTION	SHEET
194	3HR-2	WINNEBAGO	77	8
TOTAL				
DESIGNED BY: [Signature]				FILED



FOUNDATION PLAN
ABUTMENT 2 W.B. ROADWAY
ABUTMENT 1 F.B. ROADWAY
SCALE: 1/4" = 1'-0"



FOUNDATION PLAN
ABUTMENT 1 W.B. ROADWAY
ABUTMENT 2 F.B. ROADWAY
SCALE: 1/4" = 1'-0"

WORK THIS DRAWING WITH SHEET NO. 749.

ILLINOIS DIVISION OF HIGHWAYS
ROCKFORD BYPASS

F.A. ROUTE 194

PROJECT SECTION 3HR-2

WINNEBAGO COUNTY

ABUTMENT PART 2

DESIGNED BY: [Signature] DRAWN BY: [Signature] CHECKED BY: [Signature]

SHEET NO. 8	F.A.P. RTE.	SECTION	COUNTY	TOTAL SHEETS	SHEET NO.
	301	3HR-2	WINNEBAGO	171	77
19 SHEETS	CONTRACT NO. 64292				
FED. ROAD DIST. NO.		ILLINOIS	FED. AID PROJECT		