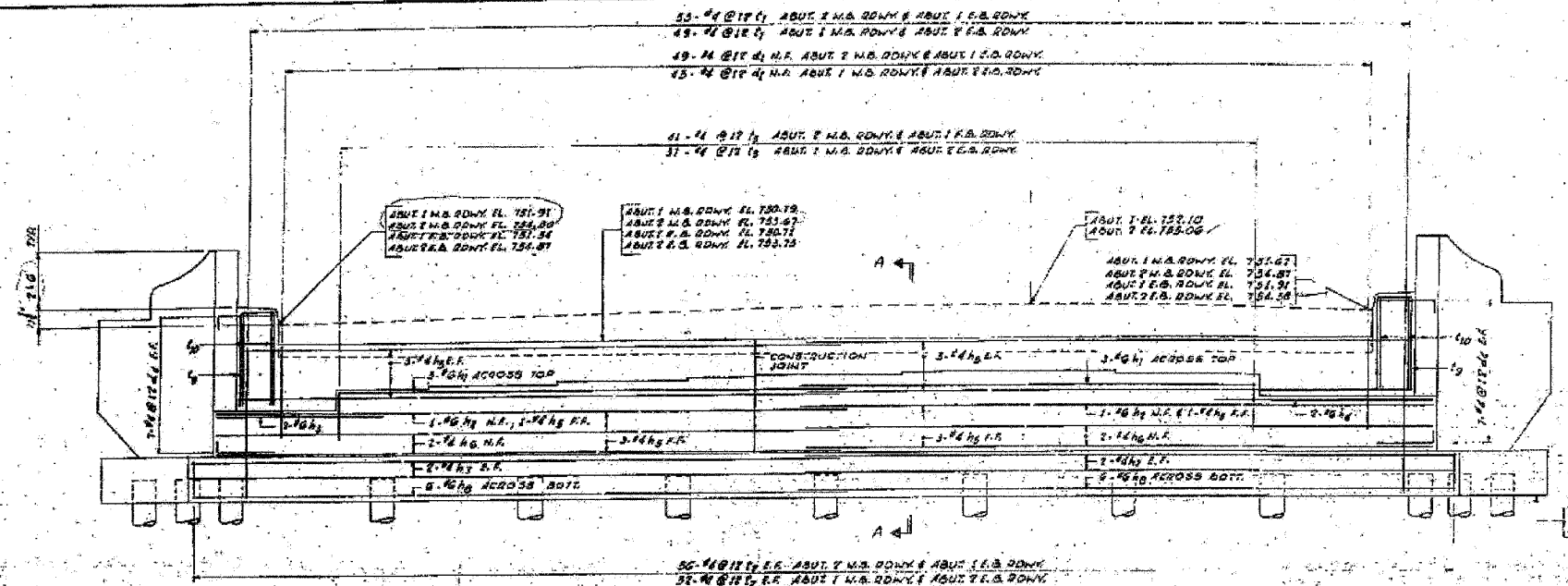
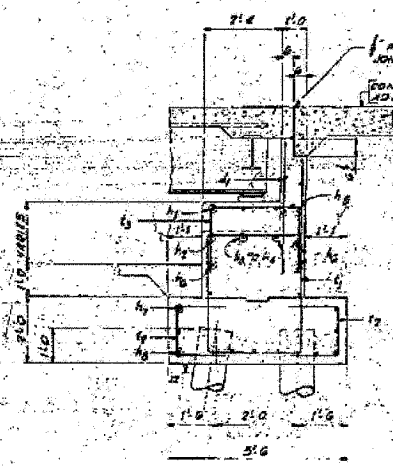


STATE OF ILLINOIS  
DEPARTMENT OF TRANSPORTATION

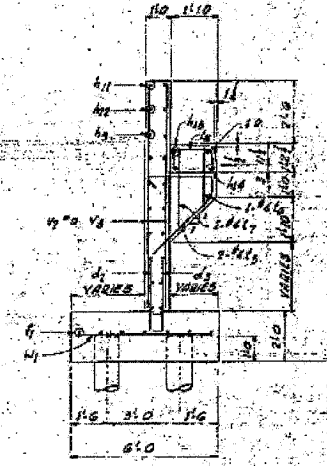
ROUTE NO.	SECTION	COUNTY	TOTAL SHEETS	SHEET NO.
194	3HR-2	WINNEBAGO	171	78
STA.	TO STA.			
15+00	15+00	15+00	1907	



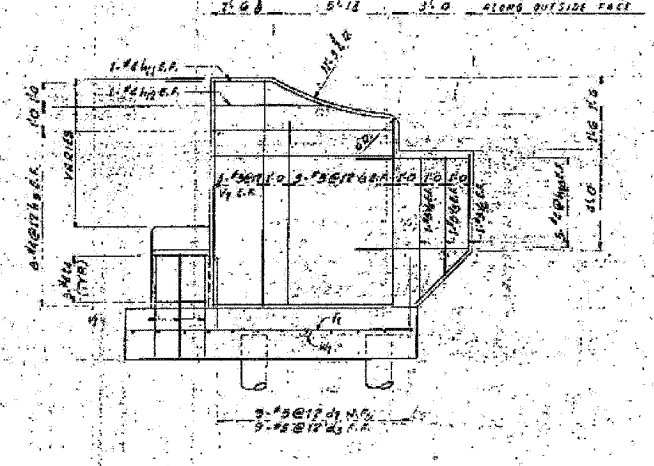
ELEVATION  
SCALE: 1/8" = 1'-0"



SECTION A-A  
SCALE: 1/8" = 1'-0"  
DEON PLAN PART 1



SECTION B-B  
SCALE: 1/8" = 1'-0"



ELEVATION C-C  
SCALE: 1/8" = 1'-0"

NOTE: THIS DWG. WITH BMT. NO. 748.

ILLINOIS DIVISION OF HIGHWAYS	
ROCKFORD BYPASS	
F. A. ROUTE 194	
PROJECT	SECTION 3HR-2
WINNEBAGO COUNTY	
ABUTMENT - PART 3	
Designed By:	Drawn By:
Checked By:	Checked By:

Revised 7/2/60: CURB HEIGHT - V.M.

SHEET NO. 9	F.A.P. RTE. 301	SECTION 3HR-2	COUNTY WINNEBAGO	TOTAL SHEETS 171	SHEET NO. 78
19 SHEETS			CONTRACT NO. 64292		
FED. ROAD DIST. NO.		ILLINOIS	FED. AID PROJECT		