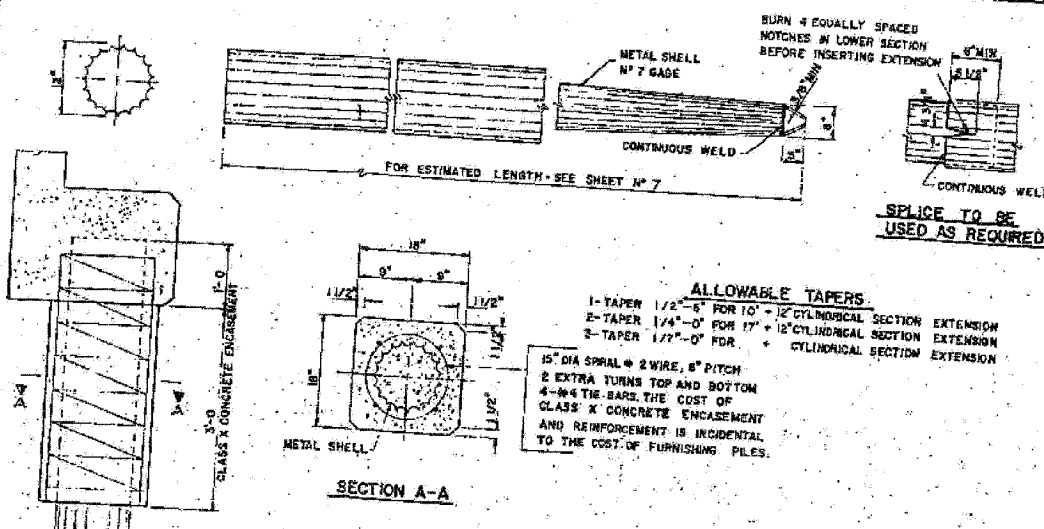
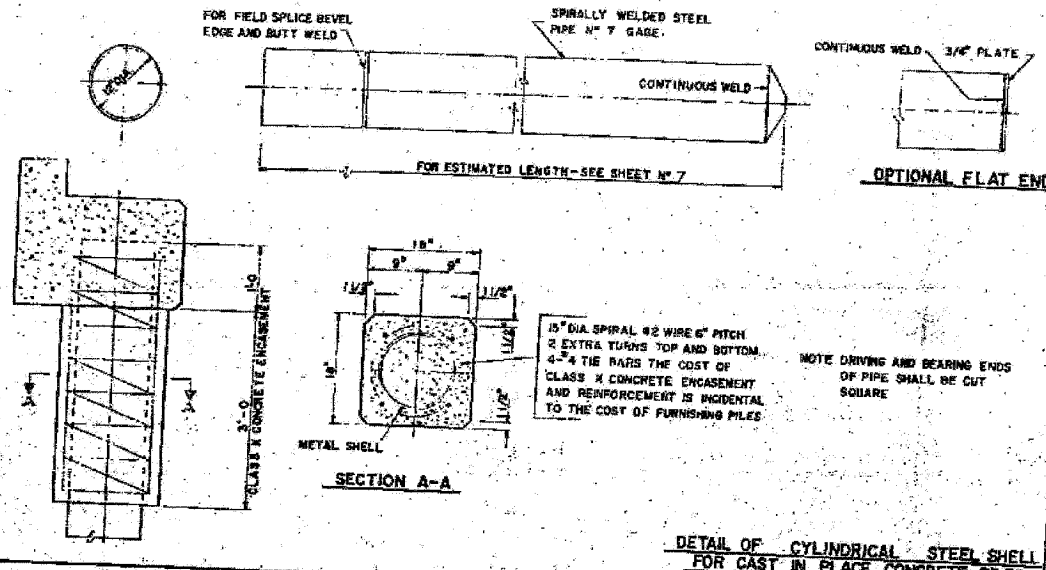


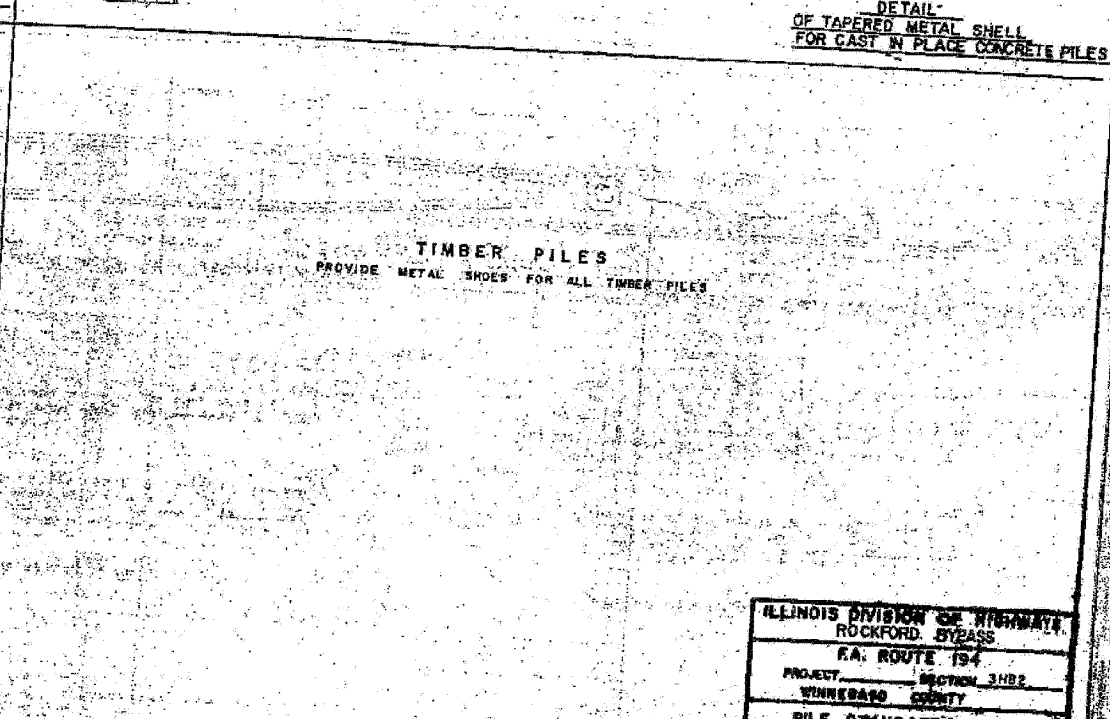
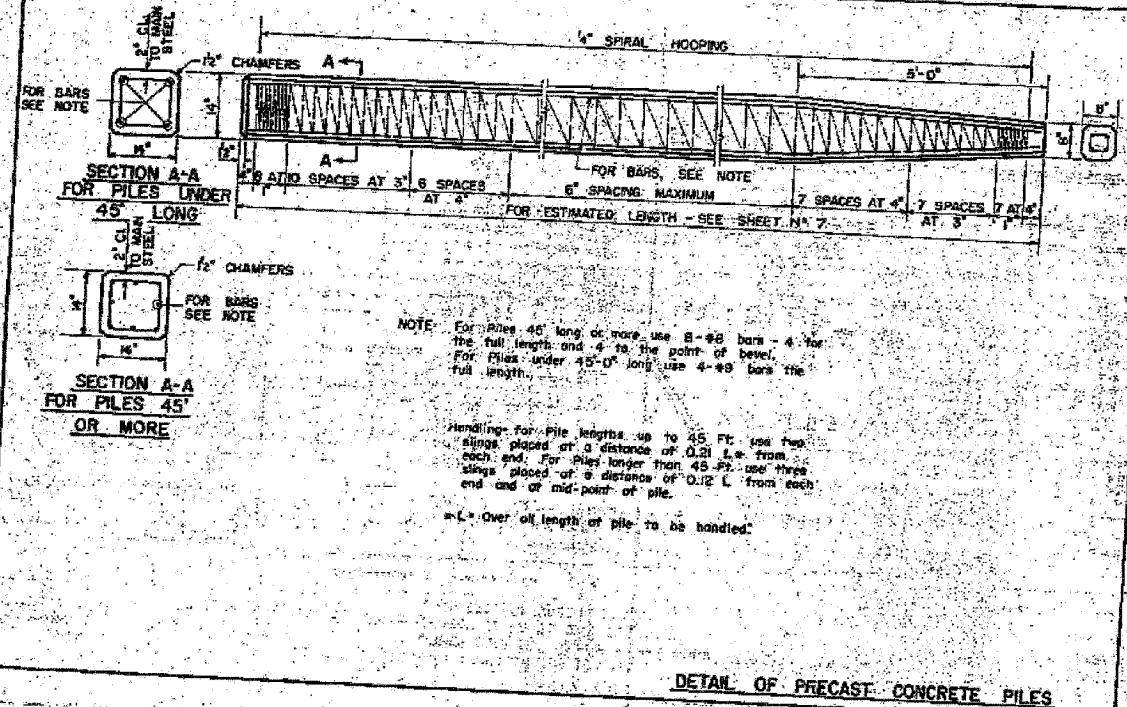
STATE OF ILLINOIS
DEPARTMENT OF TRANSPORTATION

STATE OF ILLINOIS
DEPARTMENT OF PUBLIC WORKS & BUILDINGS
DIVISION OF HIGHWAYS

ROUTE NO.	SECTION	COUNTY	TOTAL SHEETS	SHEET NO.
194	3HR-2	WINNEBAGO	171	86b



ALLOWABLE TAPERS
 1-TAPER 1/2"-0" FOR 10" - 12" CYLINDRICAL SECTION EXTENSION
 2-TAPER 1/4"-0" FOR 17" - 18" CYLINDRICAL SECTION EXTENSION
 3-TAPER 1/2"-0" FOR 18" CYLINDRICAL SECTION EXTENSION



ILLINOIS DIVISION OF HIGHWAYS ROCKFORD BYPASS R.A. ROUTE 194			
PROJECT	SECTION	3HR2	
WINNEBAGO COUNTY			
PILE STANDARD 2			
Designed by:	Drawn by:	Checked by:	Approved by:
Checked by:	Contract No.:	Contract No.:	Contract No.:

SHEET NO. 19	F.A.P. RTE.	SECTION	COUNTY	TOTAL SHEETS	SHEET NO.
19 SHEETS	301	3HR-2	WINNEBAGO	171	86b
FED. ROAD DIST. NO.			ILLINOIS	FED. AID PROJECT	
CONTRACT NO. 64292					