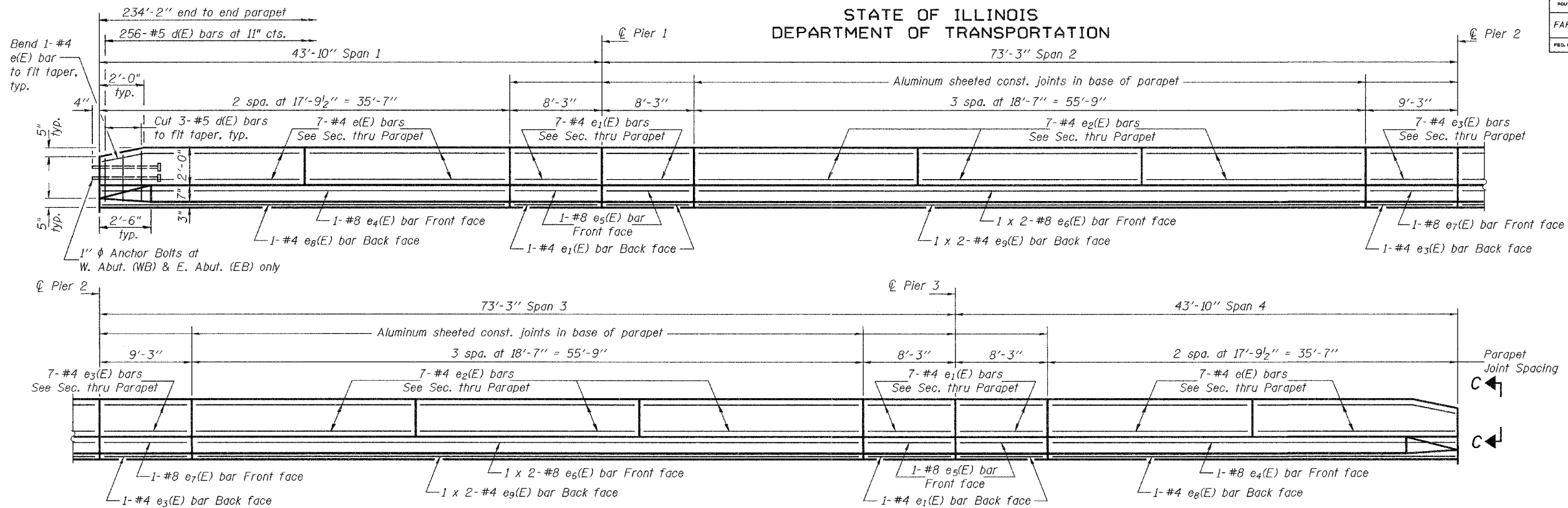


STATE OF ILLINOIS
DEPARTMENT OF TRANSPORTATION

ROUTE NO.	SECTION	COUNTY	TOTAL SHEETS	SHEET NO.
FAP 301	3HBR-2	WINNEBAGO	171	103
FED. ROAD DIST. NO. 7		ILLINOIS	FED. AID PROJECT	

SHEET NO. 17
34 SHEETS

Contract No. 64292

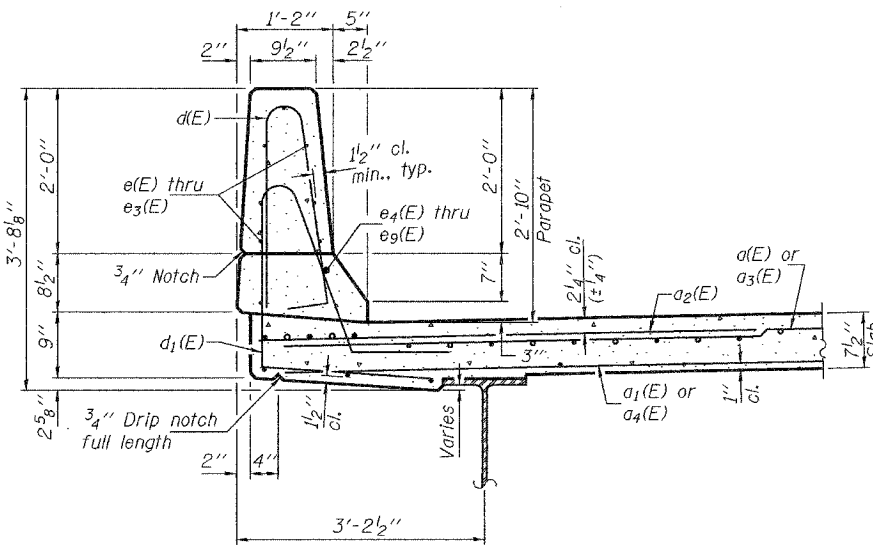


MIN. BAR LAPS
(Parapet)
#4 bar = 1'-4"
#8 bar = 3'-5"

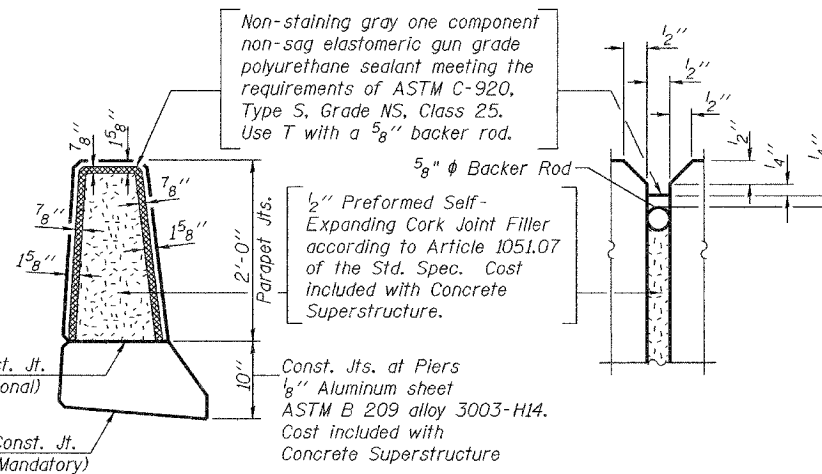
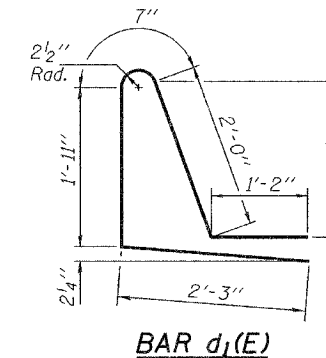
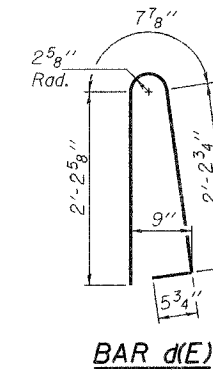
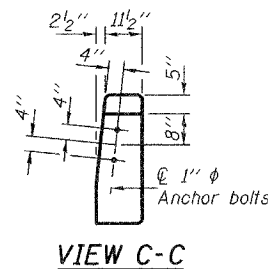
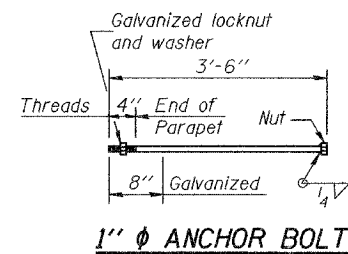
**TWO SUPERSTRUCTURES
(E.B. & W.B.)
BILL OF MATERIAL**

Bar	No.	Size	Length	Shape
a(E)	798	#5	18'-0"	—
a ₁ (E)	620	#5	17'-1"	—
a ₂ (E)	800	#6	6'-0"	—
a ₃ (E)	798	#5	31'-0"	—
a ₄ (E)	620	#5	30'-1"	—
b(E)	848	#5	30'-7"	—
b ₁ (E)	204	#6	35'-4"	—
b ₂ (E)	102	#6	39'-10"	—
b ₃ (E)	882	#5	27'-4"	—
d(E)	1024	#5	5'-7"	⌋
d ₁ (E)	1024	#5	7'-11"	⌋
e(E)	112	#4	17'-5"	—
e ₁ (E)	128	#4	7'-11"	—
e ₂ (E)	168	#4	18'-3"	—
e ₃ (E)	64	#4	8'-11"	—
e ₄ (E)	8	#8	35'-3"	—
e ₅ (E)	16	#8	7'-11"	—
e ₆ (E)	16	#8	29'-7"	—
e ₇ (E)	8	#8	8'-11"	—
e ₈ (E)	8	#4	35'-3"	—
e ₉ (E)	16	#4	28'-6"	—
m(E)	32	#6	18'-1"	—
m ₁ (E)	64	#6	8'-7"	—
m ₂ (E)	16	#6	3'-0"	—
m ₃ (E)	24	#6	5'-10"	—
m ₄ (E)	32	#6	31'-1"	—
s(E)	196	#5	6'-10"	⌋
s ₁ (E)	196	#4	7'-10"	⌋
u(E)	204	#6	3'-8"	⌋
v(E)	196	#5	3'-4"	⌋
Reinforcement Bars, Epoxy Coated		Pound	177,180	
Concrete Superstructure		Cu. Yds.	720.0	

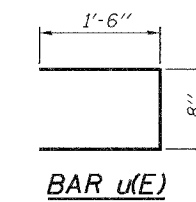
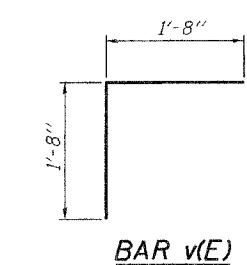
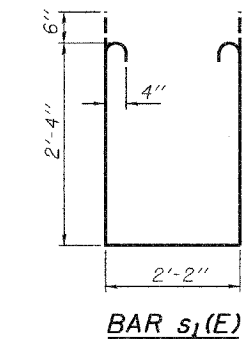
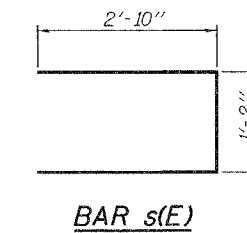
INSIDE ELEVATION OF PARAPET
(North parapet - Looking North; South parapet similar)



SECTION THRU PARAPET



PARAPET JOINT DETAILS



Bars indicated thus 1 x 2-#8 etc. indicates 1 line of bars with 2 lengths per line.

SUPERSTRUCTURE DETAILS
F.A.P. RTE. 301 - SEC. 3HBR-2
WINNEBAGO COUNTY
STATION 993+43.82
STRUCTURE NO. 101-0065 (E.B.)
STRUCTURE NO. 101-0066 (W.B.)

DESIGNED	Stephen M. Ryan
CHECKED	Fess Teklehaimanot
DRAWN	h.t. duong
CHECKED	SMR/FT

APPROVED	Apr. 25, 2008
EXAMINED	Thomas J. Damagala
PASSED	Ralph E. Anderson