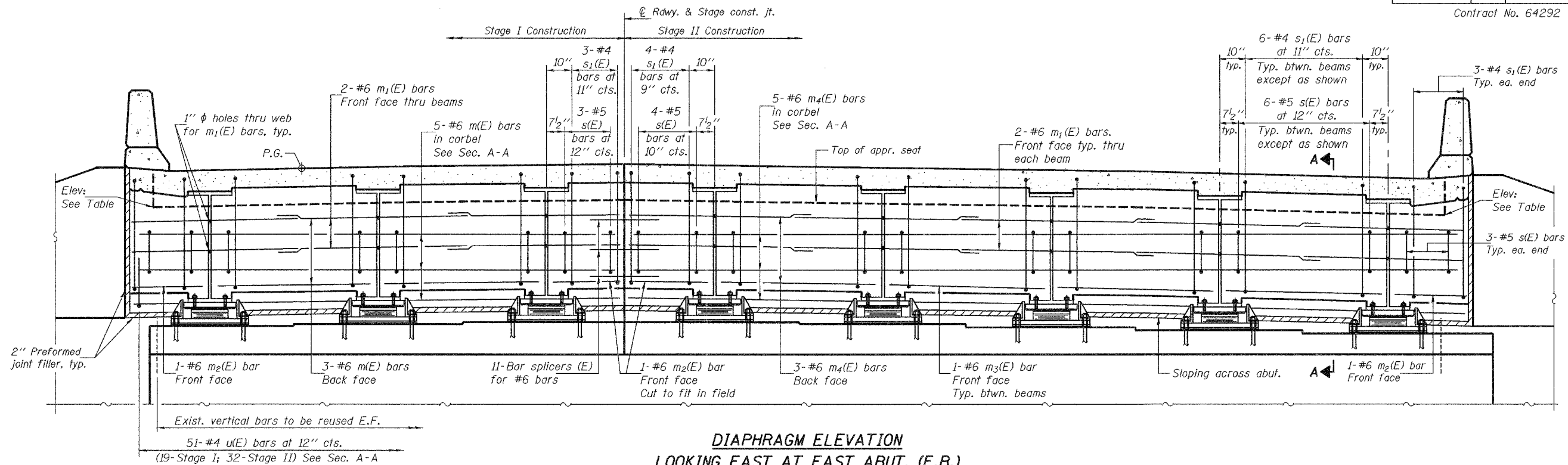


STATE OF ILLINOIS
DEPARTMENT OF TRANSPORTATION

ROUTE NO.	SECTION	COUNTY	TOTAL SHEETS	SHEET NO.	SHEET NO. 18 34 SHEETS
FAP 301	3HBR-2	WINNEBAGO	171	104	
FED. ROAD DIST. NO. 7		ILLINOIS	FED. AID PROJECT-		

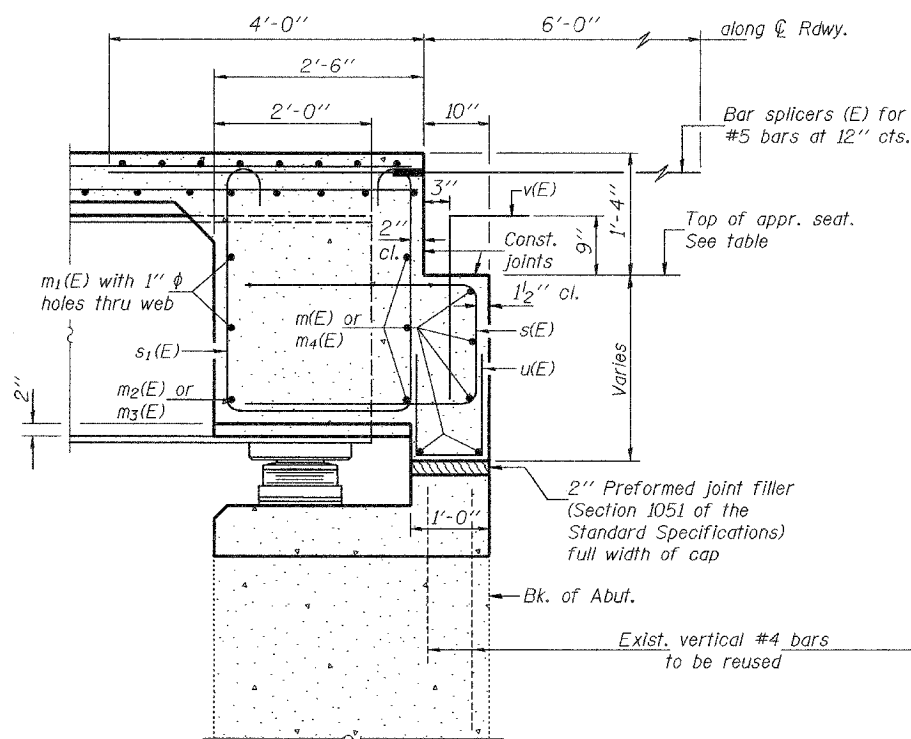
Contract No. 64292



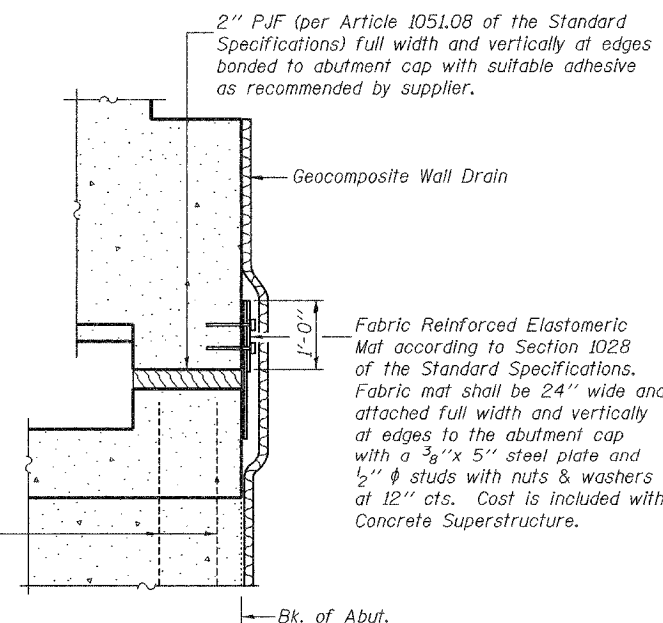
**DIAPHRAGM ELEVATION
LOOKING EAST AT EAST ABUT. (E.B.)**
(Other abutments similar)

Notes: Reinforcement bars in diaphragm are billed with superstructure on sheet 17 of 34.
Concrete in diaphragm is included with Concrete Superstructure on sheet 17 of 34.
For details of bars s(E) & s₁(E) see sheet 17 of 34.
The s(E) and s₁(E) bars shall be placed parallel to the beams. Spacing for these bars shall be at right angles to the beams.
Existing reinforcement bars extending into areas of new construction shall be cleaned, straightened and incorporated into new construction.

MIN. BAR LAP
#6 bar = 2'-9"



SECTION A-A



JOINT TREATMENT DETAIL

**TOP OF APPROACH
SEAT ELEVATION (E.B.)**

	W. Abut.	E. Abut.
Inside face North Parapet	750.72	753.82
℄ Roadway	751.01	754.11
Inside face South Parapet	750.45	753.55

**TOP OF APPROACH
SEAT ELEVATION (W.B.)**

	W. Abut.	E. Abut.
Inside face North Parapet	750.49	753.50
℄ Roadway	751.06	754.06
Inside face South Parapet	750.76	753.77

DIAPHRAGM DETAILS

F.A.P. RTE. 301 - SEC. 3HBR-2
WINNEBAGO COUNTY
STATION 993+43.82
STRUCTURE NO. 101-0065 (E.B.)
STRUCTURE NO. 101-0066 (W.B.)

DESIGNED	Stephen M. Ryan
CHECKED	Fess Teklehaimanot
DRAWN	h.f. duong
CHECKED	SMR/FT

APPROVED	Apr. 25, 2008
EXAMINED	Thomas J. Donagabadi ENGINEER OF BRIDGES
PASSED	Ralph E. Anderson ENGINEER OF BRIDGES AND STRUCTURES