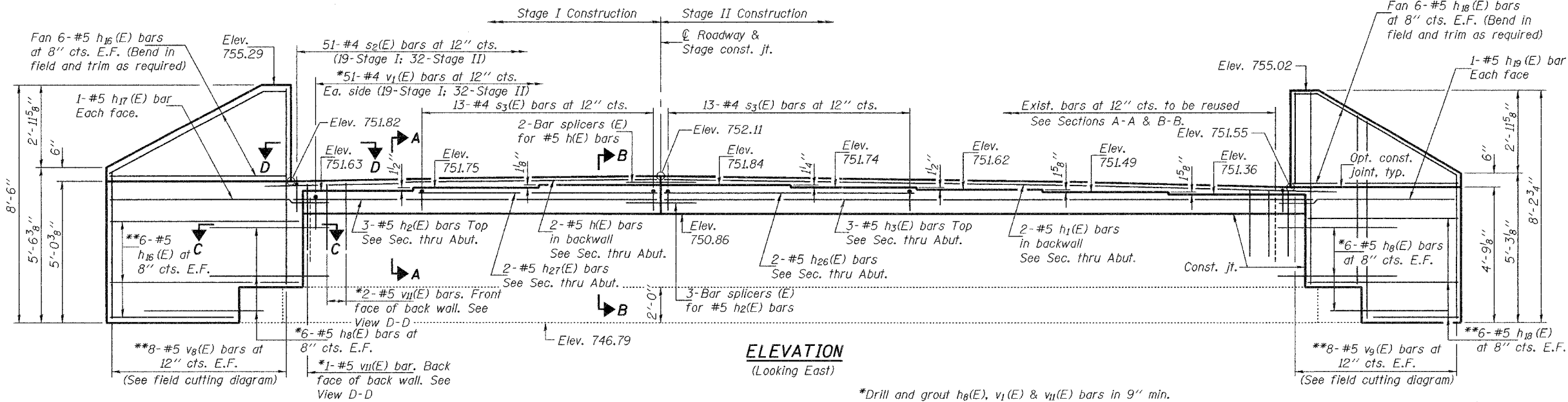


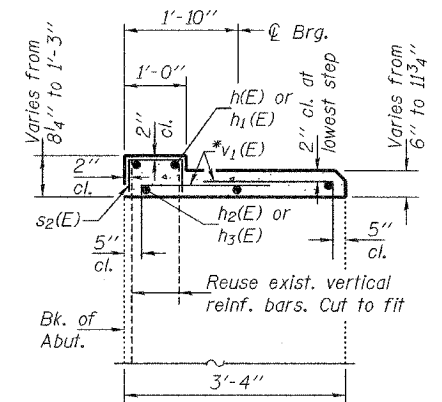
Notes: Space drilled holes in existing cap to miss existing reinforcement.
 For bar splicer details see sheet 33 of 34.
 Four steps monolithically with cap.
 Space reinforcement in cap to miss anchor bolts.

STATE OF ILLINOIS
 DEPARTMENT OF TRANSPORTATION

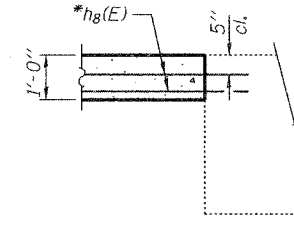
ROUTE NO.	SECTION	COUNTY	SHEETS	SHEET NO.
FAP 301	3HBR-2	WINNEBAGO	171	114
Contract No. 64292				



ELEVATION
 (Looking East)

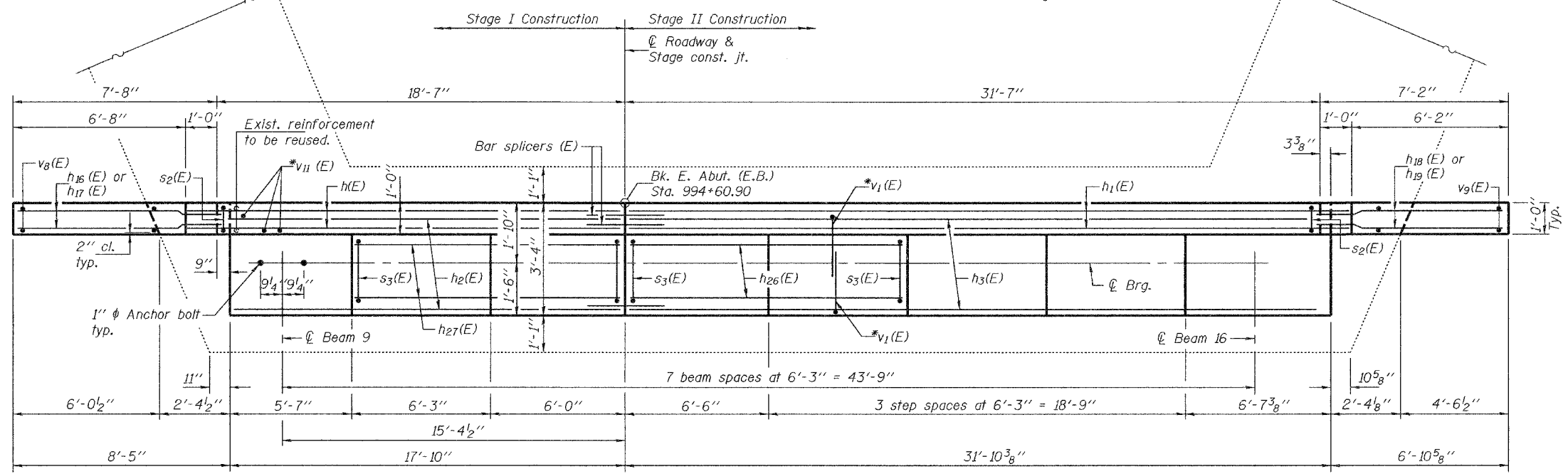


SECTION A-A

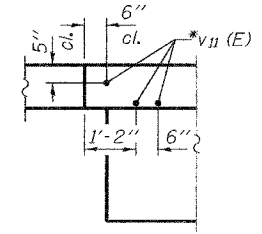
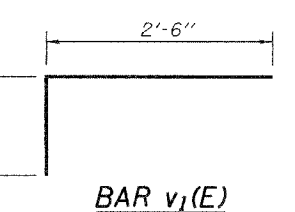
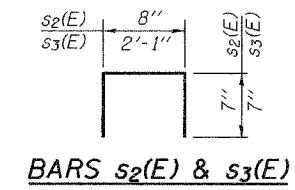


SECTION C-C

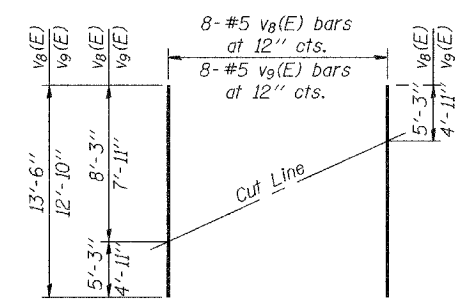
*Drill and grout h8(E), v1(E) & v11(E) bars in 9" min. drilled holes according to Art. 584 of the Std. Spec's.
 *Cut to fit and to miss existing substructure.



PLAN

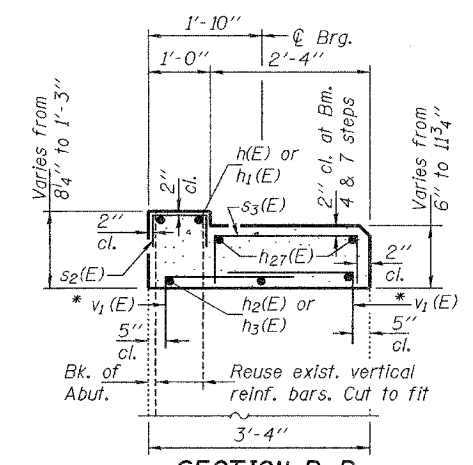


VIEW D-D
 (North end shown, South end similar)



FIELD CUTTING DIAGRAM

Order v8(E) & v9(E) full length. Cut as shown and use remainder of bars in opposite face.



SECTION B-B

BILL OF MATERIAL

Bar	No.	Size	Length	Shape
h(E)	2	#5	19'-10"	
h1(E)	2	#5	32'-10"	
h2(E)	3	#5	17'-7"	
h3(E)	3	#5	31'-7"	
h8(E)	24	#5	3'-1"	
h16(E)	24	#5	8'-2"	
h17(E)	1	#5	9'-10"	
h18(E)	24	#5	7'-8"	
h19(E)	1	#5	9'-1"	
h26(E)	2	#5	12'-6"	
h27(E)	2	#5	12'-0"	
s2(E)	51	#4	1'-10"	□
s3(E)	26	#4	3'-3"	□
v1(E)	102	#5	4'-8"	┌
v8(E)	8	#5	13'-6"	
v9(E)	8	#5	12'-10"	
v11(E)	6	#5	1'-3"	
Concrete Structures		Cu. Yd.	8.8	
Reinforcement Bars, Epoxy Coated		Pound	1650	
Structure Excavation		Cu. Yd.	69.6	

EAST ABUTMENT (E.B.)
F.A.P. RTE. 301 - SEC. 3HBR-2
WINNEBAGO COUNTY
STATION 993+43.82
STRUCTURE NO. 101-0065 (E.B.)
STRUCTURE NO. 101-0066 (W.B.)

DESIGNED	Stephen M. Ryan
CHECKED	Fess Teklehaimanot
DRAWN	h.t. duong
CHECKED	SMR/FT

APR 25 2008
 EXAMINED *Thomas J. Damagala*
 ENGINEER OF BRIDGE DESIGN
 PASSED *Ralph E. Anderson*
 ENGINEER OF BRIDGES AND STRUCTURES