

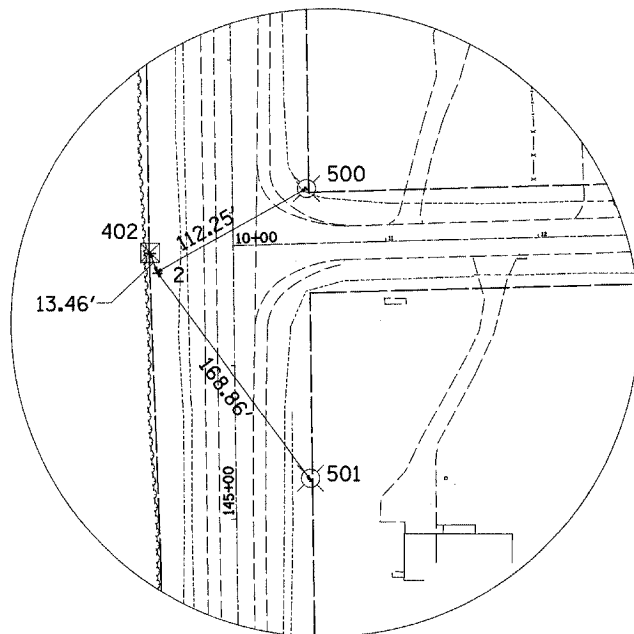
HORIZONTAL AND VERTICAL CONTROL

HORIZONTAL CONTROL POINTS

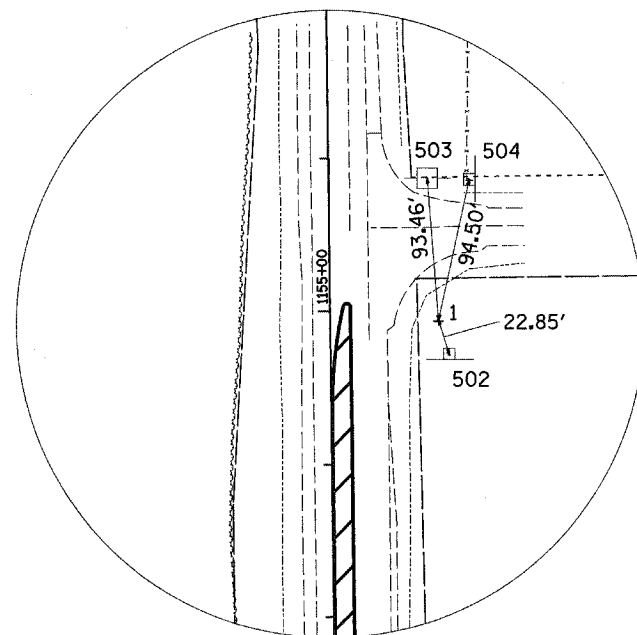
| POINT | NORTH | EAST | ELEVATION | CHAIN | STATION | OFFSET | DESCRIPTION |
|-------|--------------|--------------|-----------|-------|-------------|-------------|------------------------|
| 1 | 2060609.7290 | 2653691.9980 | 848.5560 | 76 | 154+92.7762 | 70.7777' RT | GPS CONTROL POINT, PIN |
| 2 | 2059777.1050 | 2653582.9720 | 852.0030 | 76 | 146+61.7349 | 49.7201' LT | GPS CONTROL POINT, PIN |

SURVEY WORK POINTS

| POINT | NORTH | EAST | ELEVATION | CHAIN | STATION | OFFSET | DESCRIPTION |
|-------|--------------|--------------|-----------|---------|-------------|--------------|-------------------------|
| 101 | 2059787.0520 | 2653821.5710 | 840.6310 | 76 | 146+68.3906 | 188.9934' RT | TOPO SURVEY POINT, NAIL |
| 101 | 2059787.0520 | 2653821.5710 | 840.6310 | WALNUTG | 11+88.8481 | 12.4527' RT | TOPO SURVEY POINT, NAIL |



HORIZONTAL CONTROL POINT No. 2



HORIZONTAL CONTROL POINT No. 1

BENCH MARKS

| POINT | NORTH | EAST | ELEVATION | CHAIN | STATION | OFFSET | DESCRIPTION |
|-------|--------------|--------------|-----------|-------|-------------|--------------|-----------------------------|
| 401 | 2060728.3840 | 2653971.5690 | 843.9710 | 76 | 156+07.5646 | 351.9584' RT | FOUNDATION, CHISELED SQUARE |
| 402 | 2059789.7580 | 2653578.1420 | 854.0820 | 76 | 146+74.4533 | 54.3751' LT | R.O.W. MARKER, TOP |
| 403 | 2058594.2320 | 2653592.9490 | 843.3680 | 76 | 134+74.2069 | 49.3105' LT | R.O.W. MARKER, TOP |
| 450 | 2059802.3900 | 2654627.5900 | 820.7110 | 76 | 146+72.6119 | 995.1473' RT | HEADWALL, CHISELED SQUARE |
| 455 | 2050417.1380 | 2651869.6000 | 779.5220 | 76 | 43+78.5023 | 49.9546' LT | R.O.W. MARKER, TOP |

REFERENCE TIES

| POINT | CHAIN | STATION | OFFSET | DESCRIPTION | CHAIN | STATION | OFFSET |
|-------|-------|-------------|-------------|-------------------------------|---------|------------|--------------|
| 500 | 76 | 147+15.2551 | 48.6023' RT | LIGHT POLE, SHINER | WALNUTG | 10+49.0749 | 36.2235' LT |
| 501 | 76 | 145+24.7601 | 48.7383' RT | LIGHT POLE, SHINER | WALNUTG | 10+46.7473 | 154.2573' RT |
| 502 | 76 | 154+71.0028 | 77.6911' RT | ELECTRICAL SPLICE BOX, SHINER | WALNUTG | 10+87.9350 | 791.5318' LT |
| 502 | 76 | 154+71.0028 | 77.6911' RT | SIGN, SHINER | WALNUTG | 10+87.9350 | 791.5318' LT |
| 503 | 76 | 155+86.0460 | 64.7663' RT | POWER POLE, SHINER | WALNUTG | 10+76.4992 | 906.7325' LT |
| 504 | 76 | 155+84.8079 | 92.2489' RT | WARNING SIGN | WALNUTG | 11+03.9634 | 905.1391' LT |

APPARENT PROPERTY CORNERS

| POINT | NORTH | EAST | ELEVATION | CHAIN | STATION | OFFSET | DESCRIPTION |
|-------|--------------|--------------|-----------|---------|-------------|--------------|----------------------|
| 700 | 2060707.6400 | 2653957.0240 | 844.6610 | 76 | 155+87.0231 | 337.1287' RT | PROPERTY CORNER, PIN |
| 701 | 2059776.8100 | 2654168.3090 | 829.8410 | WALNUTG | 15+35.1887 | 31.9561' RT | PROPERTY CORNER, PIN |
| 702 | 2059779.5960 | 2654268.1980 | 825.7140 | WALNUTG | 16+35.1164 | 31.8402' RT | PROPERTY CORNER, PIN |
| 703 | 2059782.3980 | 2654368.4080 | 825.8470 | WALNUTG | 17+35.3655 | 31.7168' RT | PROPERTY CORNER, PIN |
| 704 | 2059773.7220 | 2654056.2920 | 833.1970 | WALNUTG | 14+23.1291 | 32.0498' RT | PROPERTY CORNER, PIN |
| 705 | 2064323.9240 | 2653514.8930 | 858.0370 | WALNUTG | 10+03.5075 | 4530.994' LT | PROPERTY CORNER, PIN |
| 707 | 2059082.4080 | 2653692.7830 | 845.6860 | 76 | 139+65.5896 | 50.5004' RT | PROPERTY CORNER, PIN |
| 708 | 2059382.5890 | 2653688.9330 | 844.7260 | 76 | 142+65.7952 | 50.7903' RT | PROPERTY CORNER, PIN |
| 709 | 2059382.4380 | 2653688.9450 | 844.6850 | 76 | 142+65.6440 | 50.8003' RT | PROPERTY CORNER, PIN |