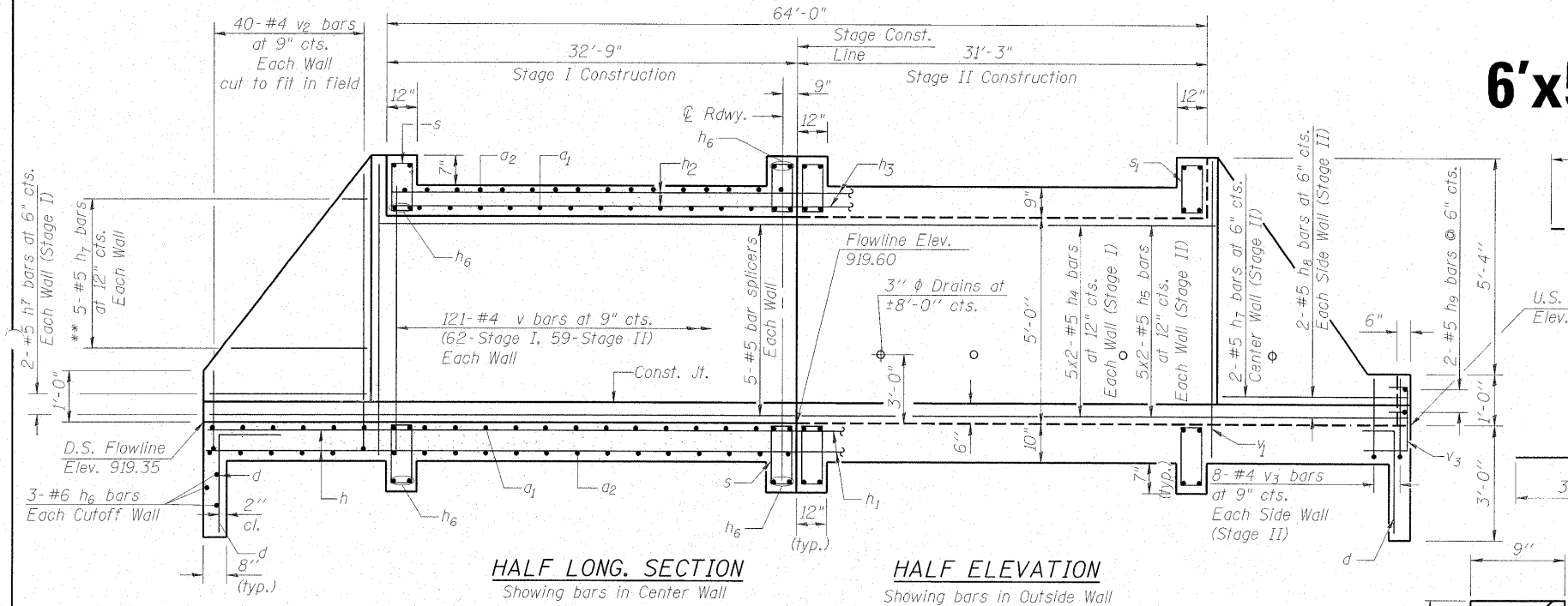


STA. 1240 + 74 6'x5' DOUBLE BOX CULVERT

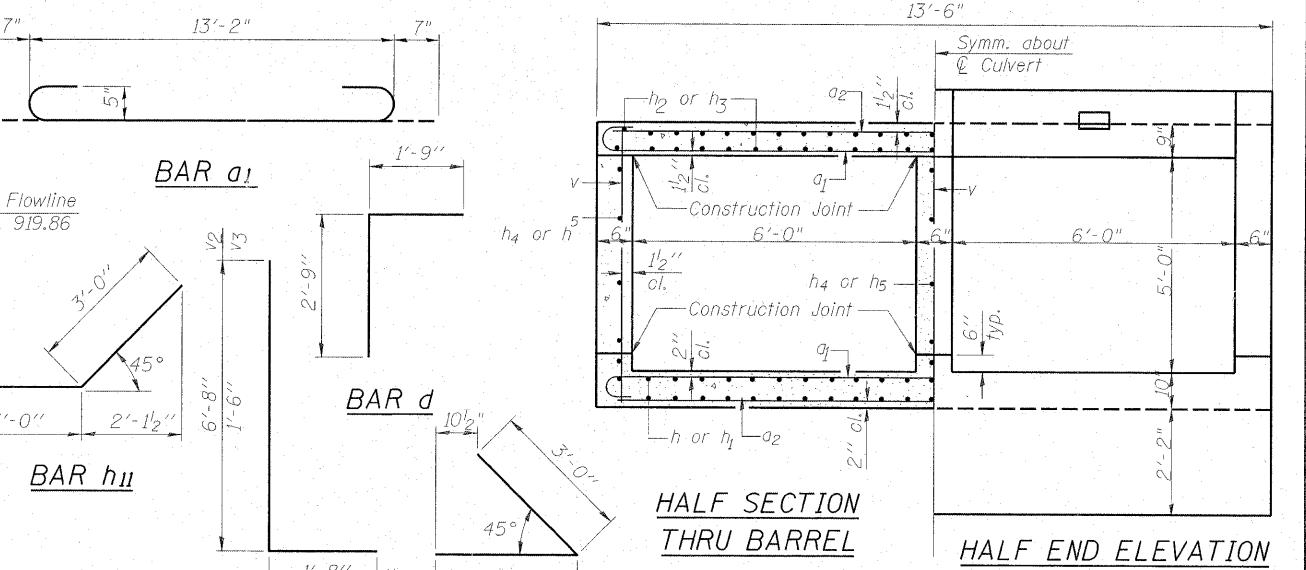


* a_2 bars in skew portion of slab shall be ordered full length & cut to fit. Balance of bar to be used in opposite end of staged culverts.

** order h_7 bars full length and cut to fit in Stage I. Balance of bar to be used in Stage II walls.

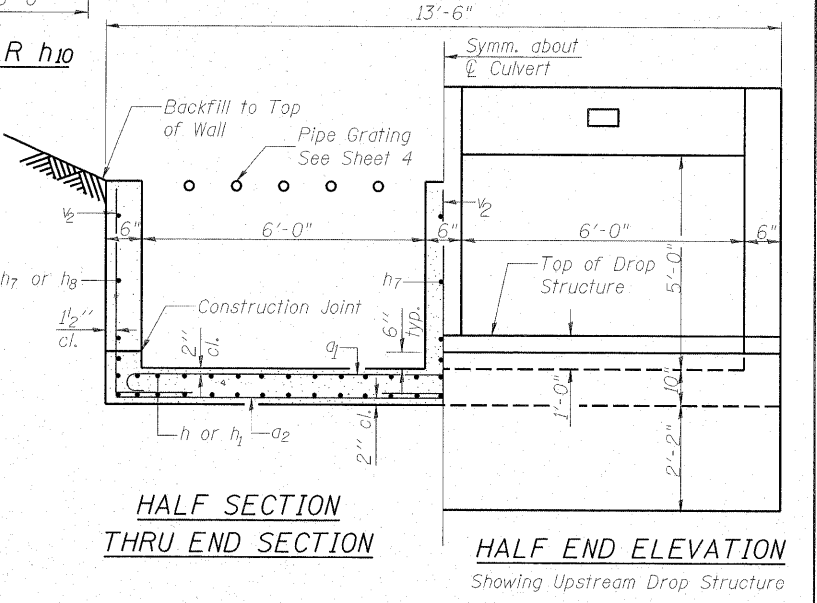
MIN. BAR LAP

#4 bar	1'-4"
#5 bar	1'-8"
#6 bar	2'-0"



BILL OF MATERIAL

Bar	No.	Size	Length	Shape
a_1	398	#5	14'-4"	U
a_2	331	#5	13'-2"	U
d	28	#4	4'-6"	L
h	102	#4	26'-5"	U
h_1	102	#4	27'-10"	U
h_2	68	#4	23'-10"	U
h_3	68	#4	22'-9"	U
h_4	30	#5	24'-5"	U
h_5	30	#5	23'-4"	U
h_6	38	#6	18'-9"	U
h_7	23	#5	29'-4"	U
h_8	4	#5	35'-9"	U
h_9	2	#5	18'-9"	U
h_{10}	2	#5	6'-0"	U
h_{11}	2	#5	6'-0"	U
s	133	#4	4'-5"	L
s_1	19	#4	4'-5"	L
v	363	#4	6'-3"	U
v_1	6	#4	6'-10"	U
v_2	240	#4	8'-4"	U
v_3	42	#4	2'-2"	U
Concrete Box Culverts		Cu. Yd.	142.9	
Reinforcement Bars		Pound	23260	



NOTES

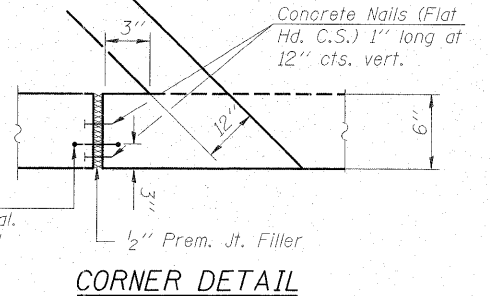
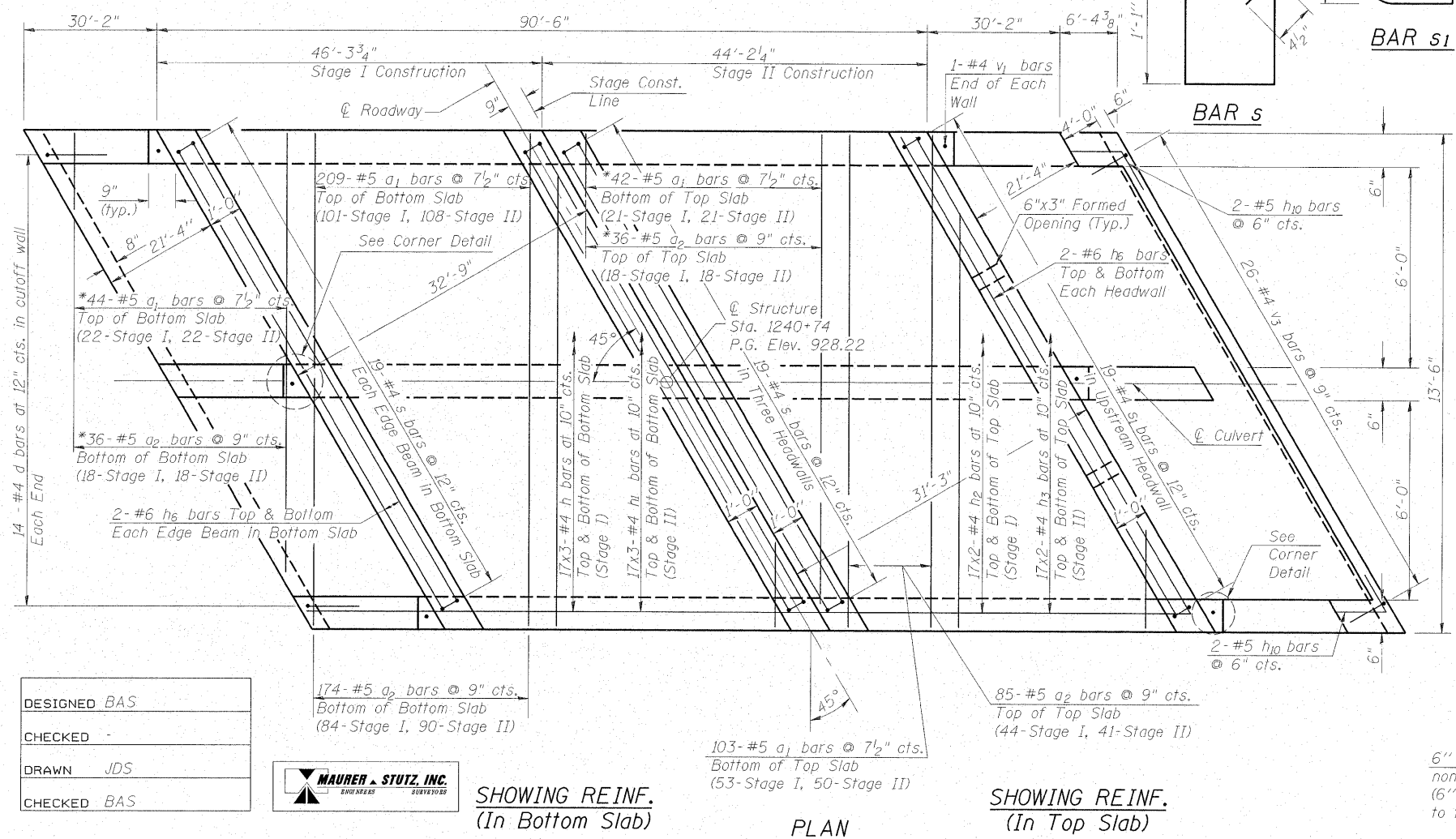
Reinforcement Bars shall conform to the requirements of ASTM A706, Grade 60, (IL modified.)

Bars indicated thus 12 x 4-#5 etc. indicates 12 lines of bars with 4 lengths per line.

All construction joints shall be bonded.

Class "SI" Concrete shall be used.

The contract unit price per Cu. Yd. for Concrete Box Culverts shall include the Expansion Bolts, J Bolts, Rebar Splicers, Anchor Bolts, Bolts, Nuts, Washers, Steel Plates, Earth Excavation and Backfilling as required.



CULVERT DETAILS

IL ROUTE 64/US ROUTE 52
OVER UNNAMED TRIBUTARY
TO STRADDLE CREEK
FAP 17 - SECTION 15T-2
CARROLL COUNTY
STATION 1240+74
STRUCTURE NO. 008-1098

DESIGNED BAS
CHECKED -
DRAWN JDS
CHECKED BAS



SHOWING REINF.
(In Bottom Slab)

PLAN

SHOWING REINF.
(In Top Slab)