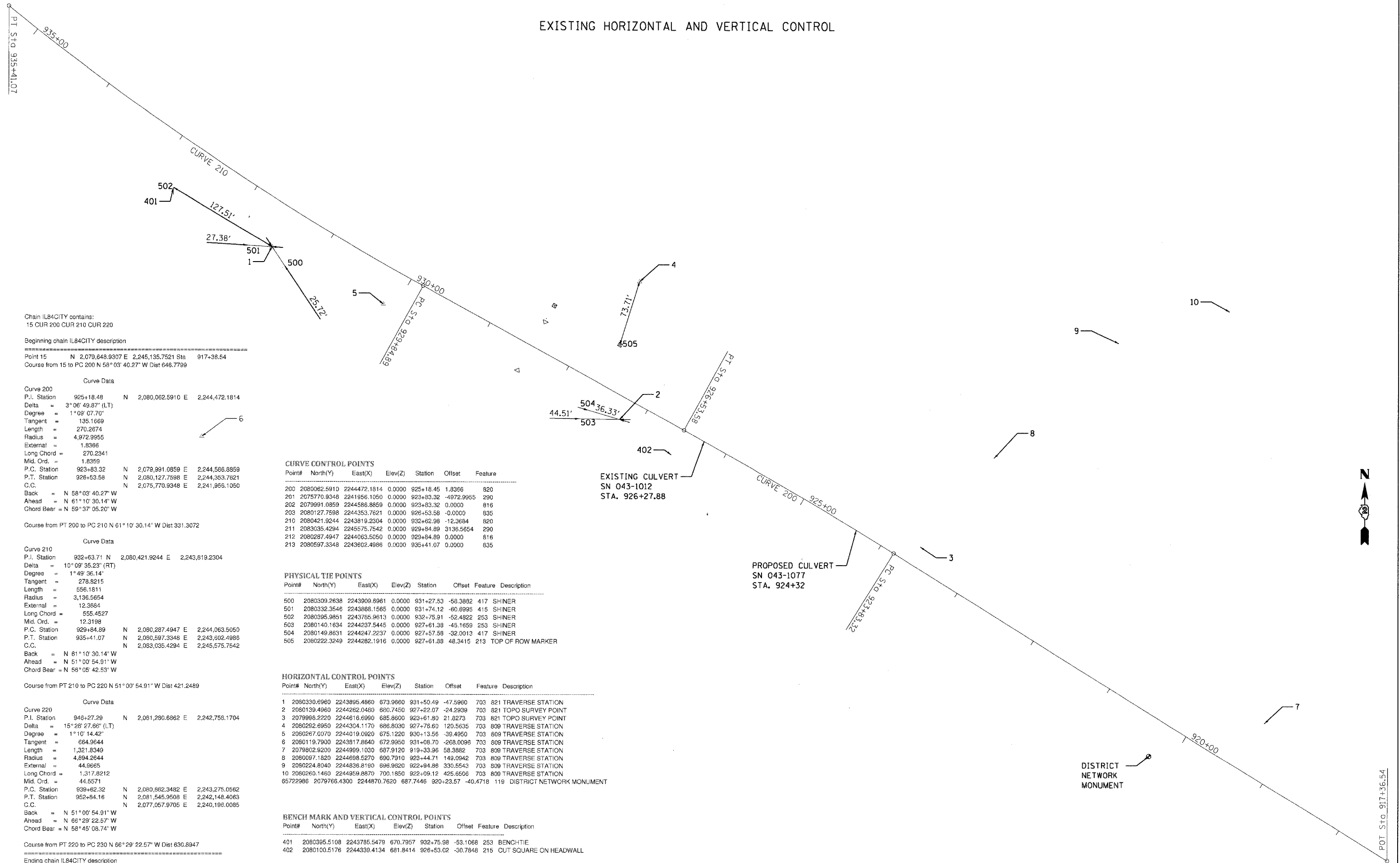


EXISTING HORIZONTAL AND VERTICAL CONTROL



Chain IL84CITY contains:  
15 CUR 200 CUR 210 CUR 220

Beginning chain IL84CITY description  
-----  
Point 15 N 2,079,648.9307 E 2,245,135.7521 Sta 917+38.54  
Course from 15 to PC 200 N 58° 03' 40.27" W Dist 646.7799

Curve Data  
Curve 200  
P.I. Station 925+18.48 N 2,080,062.5910 E 2,244,472.1814  
Delta = 3° 06' 49.87" (LT)  
Degree = 1° 09' 07.70"  
Tangent = 135.1669  
Length = 270.2674  
Radius = 4,972.9355  
External = 1.5366  
Long Chord = 270.2341  
Mid. Ord. = 1.8359  
P.C. Station 923+83.32 N 2,079,991.0859 E 2,244,586.8859  
P.T. Station 926+53.58 N 2,080,127.7598 E 2,244,353.7621  
C.C. N 2,075,770.9348 E 2,241,956.1050  
Back = N 58° 03' 40.27" W  
Ahead = N 61° 10' 30.14" W  
Chord Bear = N 59° 37' 05.20" W

Course from PT 200 to PC 210 N 61° 10' 30.14" W Dist 331.3072

Curve Data  
Curve 210  
P.I. Station 932+63.71 N 2,080,421.9244 E 2,243,819.2304  
Delta = 10° 09' 35.23" (RT)  
Degree = 1° 49' 36.14"  
Tangent = 278.8215  
Length = 556.1811  
Radius = 3,136.5654  
External = 12.3684  
Long Chord = 555.4527  
Mid. Ord. = 12.3198  
P.C. Station 929+84.89 N 2,080,287.4947 E 2,244,063.5050  
P.T. Station 935+41.07 N 2,080,597.3348 E 2,243,602.4986  
C.C. N 2,083,035.4294 E 2,245,575.7542  
Back = N 61° 10' 30.14" W  
Ahead = N 51° 00' 54.91" W  
Chord Bear = N 56° 05' 42.53" W

Course from PT 210 to PC 220 N 51° 00' 54.91" W Dist 421.2489

Curve Data  
Curve 220  
P.I. Station 946+27.29 N 2,061,280.6862 E 2,242,758.1704  
Delta = 15° 28' 27.66" (LT)  
Degree = 1° 10' 14.42"  
Tangent = 664.9644  
Length = 1,321.8349  
Radius = 4,894.2644  
External = 44.9665  
Long Chord = 1,317.8212  
Mid. Ord. = 44.5571  
P.C. Station 939+82.32 N 2,080,862.3482 E 2,243,275.0562  
P.T. Station 952+84.16 N 2,081,545.9508 E 2,242,148.4063  
C.C. N 2,077,057.9705 E 2,240,198.0085  
Back = N 51° 00' 54.91" W  
Ahead = N 66° 29' 22.57" W  
Chord Bear = N 58° 45' 08.74" W

Course from PT 220 to PC 230 N 66° 29' 22.57" W Dist 630.8947  
-----  
Ending chain IL84CITY description

**CURVE CONTROL POINTS**

Point#	North(Y)	East(X)	Elev(Z)	Station	Offset	Feature
200	2080062.5910	2244472.1814	0.0000	925+18.45	1.8366	820
201	2075770.9348	2241956.1050	0.0000	923+83.32	-4972.9955	290
202	2079991.0859	2244586.8859	0.0000	923+83.32	0.0000	816
203	2080127.7598	2244353.7621	0.0000	926+53.58	-0.0000	835
210	2080421.9244	2243819.2304	0.0000	932+62.98	-12.3684	820
211	2083035.4294	2245575.7542	0.0000	929+84.89	3136.5654	290
212	2080287.4947	2244063.5050	0.0000	929+84.89	0.0000	816
213	2080597.3348	2243602.4986	0.0000	935+41.07	0.0000	835

**PHYSICAL TIE POINTS**

Point#	North(Y)	East(X)	Elev(Z)	Station	Offset	Feature Description
500	2080309.2638	2243909.6961	0.0000	931+27.53	-58.3892	417 SHINER
501	2080332.3546	2243868.1565	0.0000	931+74.12	-60.8995	415 SHINER
502	2080395.9851	2243765.9613	0.0000	932+75.91	-52.4822	253 SHINER
503	2080140.1634	2244237.5445	0.0000	927+61.38	-45.1659	253 SHINER
504	2080149.8631	2244247.2237	0.0000	927+57.58	-32.0013	217 SHINER
505	2080222.3249	2244282.1916	0.0000	927+61.88	48.3415	213 TOP OF ROW MARKER

**HORIZONTAL CONTROL POINTS**

Point#	North(Y)	East(X)	Elev(Z)	Station	Offset	Feature Description
1	2090330.6960	2243895.4660	673.9660	931+50.49	-47.5960	703 821 TRAVERSE STATION
2	2080139.4960	2244282.0480	680.7450	927+22.07	-24.2939	703 821 TOPO SURVEY POINT
3	2079996.2220	2244616.6990	685.8600	923+61.80	21.8273	703 821 TOPO SURVEY POINT
4	2080292.6950	2244304.1170	686.8030	927+76.60	120.5635	703 809 TRAVERSE STATION
5	2080267.0070	2244019.0920	675.1220	930+13.56	-39.4950	703 809 TRAVERSE STATION
6	2080119.7900	2243817.8640	672.9950	931+08.70	-268.0096	703 809 TRAVERSE STATION
7	2079802.9200	2244999.1030	687.9120	919+33.96	58.3882	703 809 TRAVERSE STATION
8	2080097.1820	2244698.5270	690.7910	923+44.71	149.0942	703 809 TRAVERSE STATION
9	2080224.8040	2244836.8190	696.9620	922+94.86	330.5543	703 809 TRAVERSE STATION
10	2080260.1460	2244959.8870	700.1850	922+09.12	425.6506	703 809 TRAVERSE STATION
65722986	2079766.4300	2244870.7620	687.7446	920+23.57	-40.4718	119 DISTRICT NETWORK MONUMENT

**BENCH MARK AND VERTICAL CONTROL POINTS**

Point#	North(Y)	East(X)	Elev(Z)	Station	Offset	Feature Description
401	2080395.5108	2243785.5479	670.7957	932+75.98	-53.1068	253 BENCHTIE
402	2080100.5176	2244339.4134	681.8414	926+53.02	-30.7848	215 CUT SQUARE ON HEADWALL

FILE NAME = P:\2298-01 - US 20 Box Culvert\microstation	USER NAME = IDOTCAD	DESIGNED - SPF	REVISED -
Files\00 Sheet Files\210106HVC.dgn		DRAWN - AJP	REVISED -
PLOT SCALE = 50.0000' / IN.		CHECKED - JMS	REVISED -
PLOT DATE = 3/25/2008		DATE - 3-28-08	REVISED -

**STATE OF ILLINOIS  
DEPARTMENT OF TRANSPORTATION**

**ALIGNMENT, TIES AND BENCHMARKS**

SCALE: 1"=50' SHEET NO. 1 OF 1 SHEETS STA. 917+36.54 TO STA. 935+41.07

F.A.P. RTE.	SECTION	COUNTY	TOTAL SHEETS	SHEET NO.
301	29T-1	JODAVIESS	30	6
CONTRACT NO. 64C58				
FED. ROAD DIST. NO.		ILLINOIS FED. AID PROJECT		