

6-13-08 Letting, Item 038

PROJECT ENGINEER: REBECCA MARRUFFO

SQUAD LEADER: BRAD CUSHMAN (815)-284-5996

INDEX

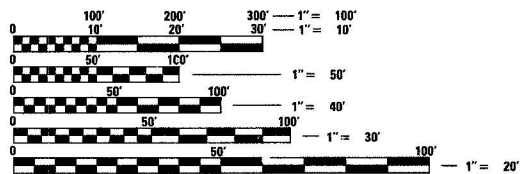
| | |
|-------|---|
| 1 | COVER SHEET |
| 2-4 | SUMMARY OF QUANTITIES |
| 5 | GENERAL NOTES |
| 6-7 | TYPICAL SECTIONS |
| 8-9 | SCHEDULE OF QUANTITIES |
| 10 | AGGREGATE / EARTHWORK SCHEDULE |
| 11-13 | HORIZONTAL & VERTICAL CONTROL |
| 14-20 | PLAN & PROFILE |
| 21-30 | CULVERT DETAIL SHEETS |
| 31-34 | DETOUR DETAILS |
| 35-40 | BORING LOGS |
| 41 | DELINEATOR AND POST ORIENTATION (37.4) |
| | ROAD CLOSED TO OVERSIZED LOADS (40.4) |
| | TYPICAL BENCHING ON EXISTING EMBANKMENT (50.4) |
| | LETTERING FOR NAME PLATE (89.4) |
| 42 | TREE REPLACEMENT SCHEDULE (90.4) |
| | EROSION CONTROL DETAILS FOR SILT FENCE (29.2) |
| 43 | FIELD TILE JUNCTION VAULTS 24" AND 36" DIA. (30.2) |
| | WITNESS MARKER & PERMANENT SURVEY MARKERS, TYPE II (66.2) |
| 44 | STORM WATER POLLUTION PREVENTION PLAN (2.1) |
| 45 | TRAFFIC CONTROL FOR ROAD CLOSURE (40.1) |
| 46-47 | TYPICAL PAVEMENT MARKINGS (41.1) |
| 48 | DETAIL OF PLANTING AND BRACING TREES (92.1) |
| 49-59 | CROSS SECTIONS |

STATE STANDARDS

| | |
|-----------|---|
| 001001-01 | AREAS OF REINFORCEMENT BARS |
| 001006 | DECIMAL OF AN INCH AND A FOOT |
| 280001-04 | TEMPORARY EROSION CONTROL SYSTEMS |
| 442201-03 | CLASS C AND D PATCHES |
| 515001-02 | NAME PLATE FOR BRIDGES |
| 542401 | METAL END SECTION FOR PIPE CULVERTS |
| 635001 | DELINEATORS |
| 635011-01 | REFLECTOR MARKER AND MOUNTING DETAILS |
| 666001 | RIGHT-OF-WAY MARKERS |
| 667101 | PERMANENT SURVEY MARKERS |
| 701006-02 | TYPICAL APPLICATION OF TRAFFIC CONTROL STANDARD |
| 701201-02 | TYPICAL APPLICATION OF TRAFFIC CONTROL STANDARD |
| 701301-02 | TYPICAL APPLICATION OF TRAFFIC CONTROL STANDARD |
| 701311-02 | TYPICAL APPLICATION OF TRAFFIC CONTROL STANDARD |
| 701326-02 | TYPICAL APPLICATION OF TRAFFIC CONTROL STANDARD |
| 701901 | TRAFFIC CONTROL DEVICES |
| 720011 | METAL POST FOR SIGNS, MARKERS AND DELINEATORS |
| 728001 | TELESCOPING STEEL SIGN SUPPORT |
| 729001 | APPLICATIONS OF TYPES A & B METAL POSTS (FOR SIGNS AND MARKERS) |
| 780001-01 | TYPICAL PAVEMENT MARKINGS |

DESIGN DESIGNATION

ILLINOIS ROUTE 251 50 MAJOR COLLECTOR



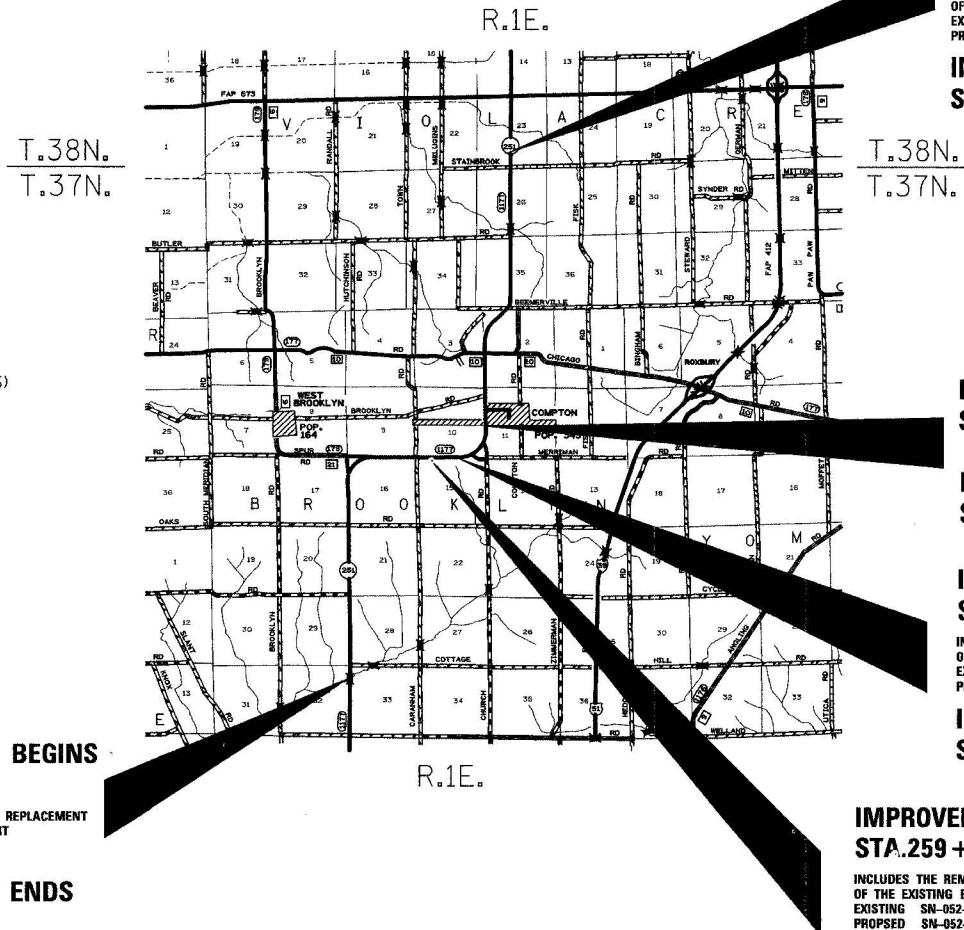
FULL SIZE PLANS HAVE BEEN PREPARED USING STANDARD ENGINEERING SCALES. REDUCED SIZED PLANS WILL NOT CONFORM TO STANDARD SCALES. IN MAKING MEASUREMENTS ON REDUCED PLANS, THE ABOVE SCALES MAY BE USED.

J.U.L.I.E.
JOINT UTILITY LOCATION INFORMATION FOR EXCAVATION
1-800-892-0123

CONTRACT NO. 64C72

STATE OF ILLINOIS
DEPARTMENT OF TRANSPORTATION
DIVISION OF HIGHWAYS
**PROPOSED
HIGHWAY PLANS**

FAS ROUTE 1177 (IL 251)
SECTION (110,111)T
PROJECT RS-1177 (111)
LEE COUNTY
C-92-026-08



**IMPROVEMENT BEGINS
STA.27 + 00**

INCLUDES THE REMOVAL AND REPLACEMENT OF THE EXISTING BOX CULVERT
EXISTING SN-052-1079
PROPOSED SN-052-1104

**IMPROVEMENT ENDS
STA.29 + 77**

**IMPROVEMENT BEGINS
STA.527 + 00**

INCLUDES THE REMOVAL AND REPLACEMENT OF THE EXISTING BOX CULVERT
EXISTING SN-052-1065
PROPOSED SN-052-1101

**IMPROVEMENT ENDS
STA.530 + 00**

**IMPROVEMENT BEGINS
STA.317 + 50**

PLUG EXISTING CULVERT & REDITCH

**IMPROVEMENT ENDS
STA.329 + 00**

**IMPROVEMENT BEGINS
STA.274 + 50**

INCLUDES THE REMOVAL AND REPLACEMENT OF THE EXISTING BOX CULVERT
EXISTING SN-052-1071
PROPOSED SN-052-1102

**IMPROVEMENT ENDS
STA.282 + 00**

**IMPROVEMENT BEGINS
STA.259 + 50**

INCLUDES THE REMOVAL AND REPLACEMENT OF THE EXISTING BOX CULVERT
EXISTING SN-052-1072
PROPOSED SN-052-1103

**IMPROVEMENT ENDS
STA.263 + 50**

BROOKLYN TOWNSHIP, SECTION 10,11,15,32,33
VIOLA TOWNSHIP, SECTION 23

GROSS LENGTH OF PROJECT = 50,300 LIN. FT. = 9.53 MILES
NET LENGTH OF PROJECT = 2,877 LIN. FT. = 0.54 MILES

64C72

| F.A.S. R.T.E. | SECTION | COUNTY | TOTAL SHEETS | SHEET NO. |
|---------------|------------|--------|--------------|-----------|
| 1177 | (110,111)T | LEE | 59 | 1 |

D-92-001-07



LOCATION OF SECTION INDICATED THIS: —

STATE OF ILLINOIS
DEPARTMENT OF TRANSPORTATION
DIVISION OF HIGHWAYS

SUBMITTED Feb. 26, 2008

Sean F. Ryan
DEPUTY DIRECTOR OF HIGHWAYS, REGION ENGINEER

May 9, 2008
Eric E. Horn
SENIOR ENGINEER OF DESIGN AND ENVIRONMENT

May 9, 2008
Christine M. Reed
DIRECTOR OF HIGHWAYS, CHIEF ENGINEER

**PRINTED BY THE AUTHORITY
OF THE STATE OF ILLINOIS**