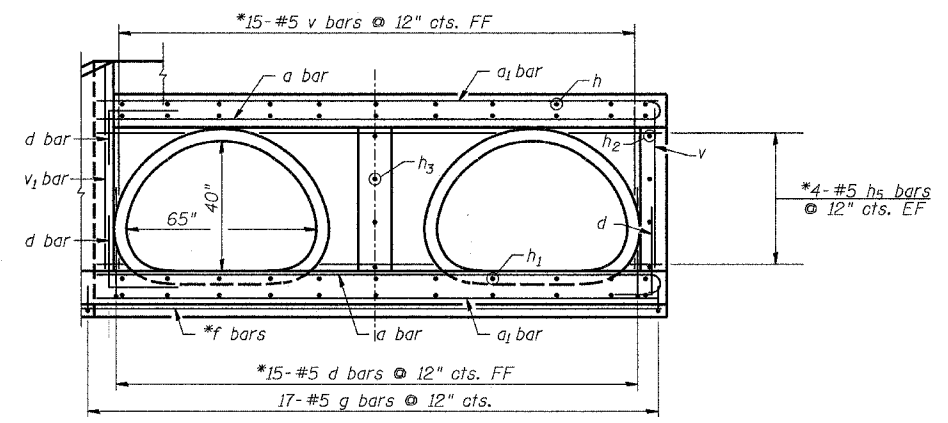
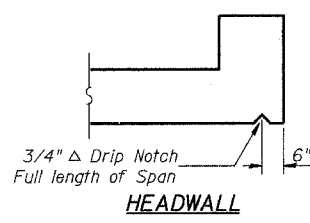


F.A.S. RTE.	SECTION	COUNTY	TOTAL SHEETS	SHEET NO.
1177	(110,111)T	LEE	59	30
STA.		TO STA.		
FED. ROAD DIST. NO.		ILLINOIS FED. AID PROJECT		

END SECTION NO.3

RT STA 277+15

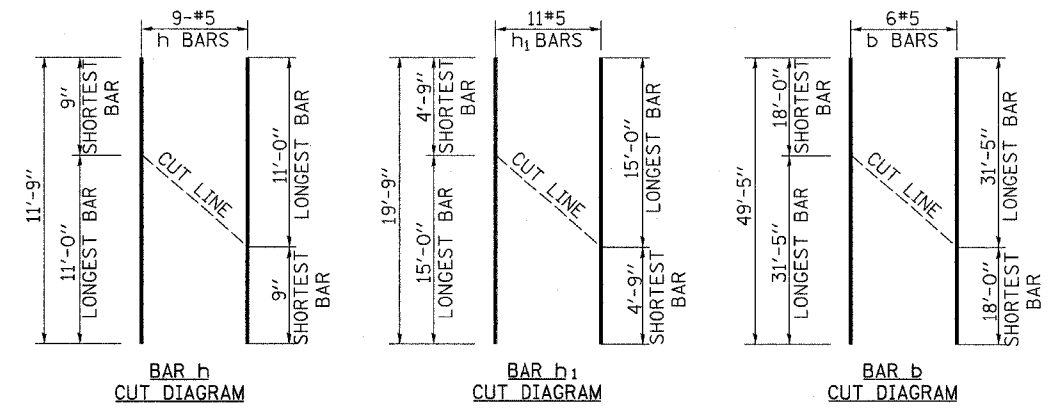
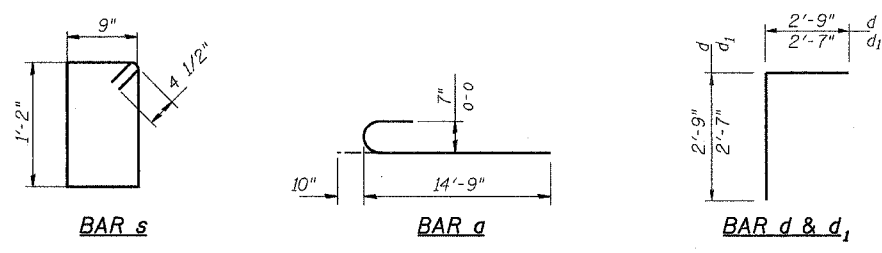
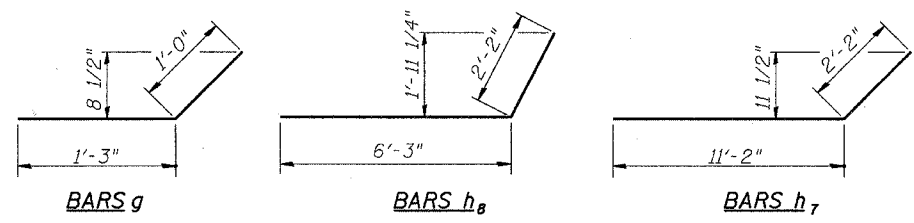


SECTION B-B

*Cut to fit

BILL OF MATERIAL

BAR	SIZE	NO.	LENGTH	SHAPE
a	7	24	15'-7"	—
a1	7	14	14'-9"	—
b	5	6	49'-5"	—
b1	5	2	31'-5"	—
d	6	55	5'-6"	└
d1	5	22	5'-2"	└
f	6	2	17'-0"	—
g	5	17	2'-3"	—
h	5	9	11'-9"	—
h1	5	11	19'-9"	—
h2	5	4	11'-2"	—
h3	5	4	6'-1"	—
h4	6	4	17'-8"	—
h5	5	8	14'-7"	—
h6	5	5	6'-3"	—
h7	5	6	13'-4"	—
h8	5	1	8'-5"	—
v	5	34	4'-2"	—
v1	5	19	5'-0"	—
s	5	19	4'-7"	□
DESCRIPTION			UNIT	QTY
CONCRETE STRUCTURES			CU YD	15.0
REINFORCEMENT BARS			LB	3,290



GENERAL NOTES:

This work shall be done according to the applicable portion of 503, 508, and 540 of the Standard Specifications. Exposed edges shall be beveled 3/4". Reinforcement bars shall conform to the requirements of ASTM A 706 Gr. 60 (IL Modified). See Special Provisions. Order h, h₁ & b bars full length and cut to fit in field. Use remainder in opposite face. For backfilling and embankment, See Standard Specifications. All dimensions are in millimeters (mm) unless noted. See Plan & Profile Sheet for more information. See Cross Section Sheet for more information.

PLOT DATE = 2/14/2008
FILE NAME = V:\B\cgs\2244-15\08107\out.dgn
PLOT SCALE = 49.50'3" / IN.
USER NAME = bnebel