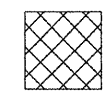
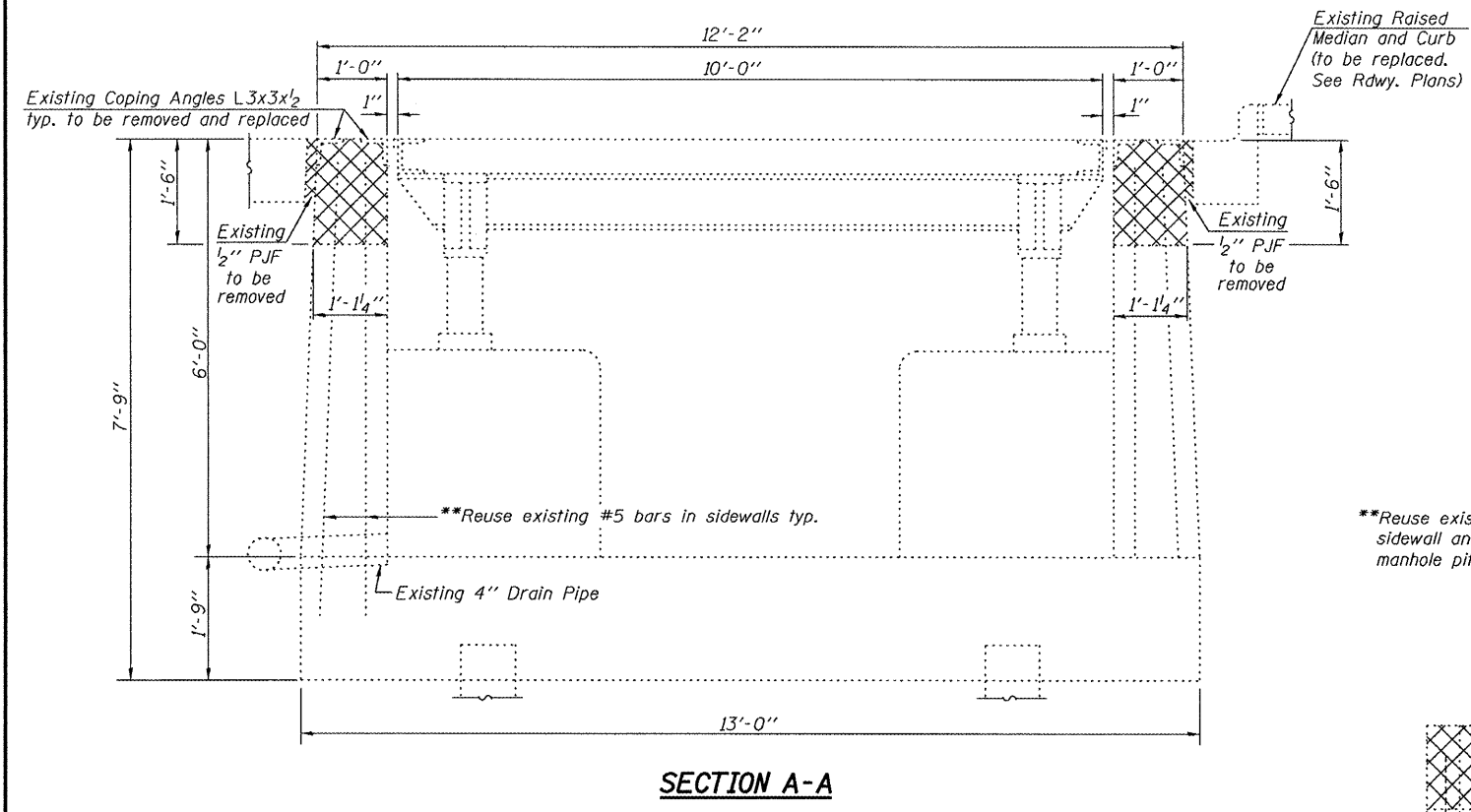
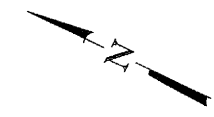
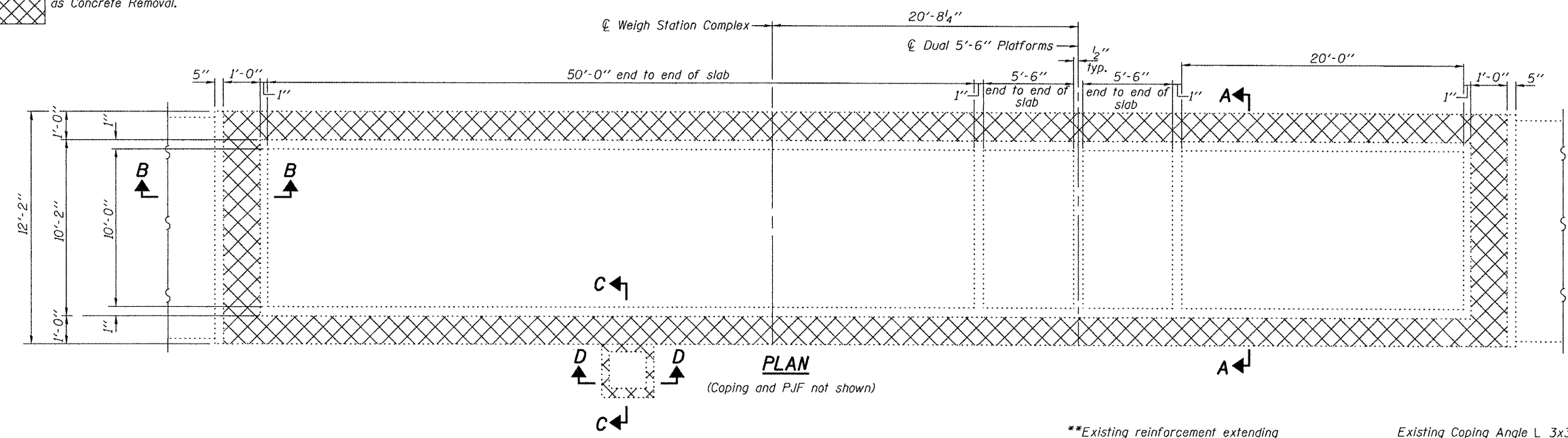


STATE OF ILLINOIS
DEPARTMENT OF TRANSPORTATION

ROUTE NO.	SECTION	COUNTY	SHEETS	SHEET	SHEET NO.
FAI 80	*	Rock Island	18	14	5 SHEETS
FED. ROAD DIST. NO. 7	ILLINOIS	FED. AID PROJECT			

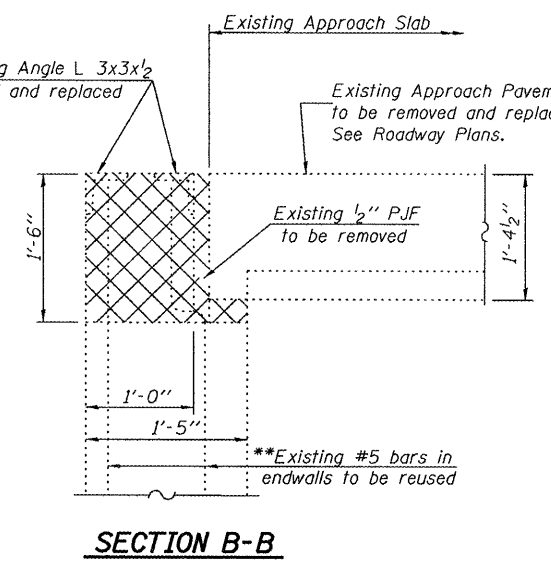
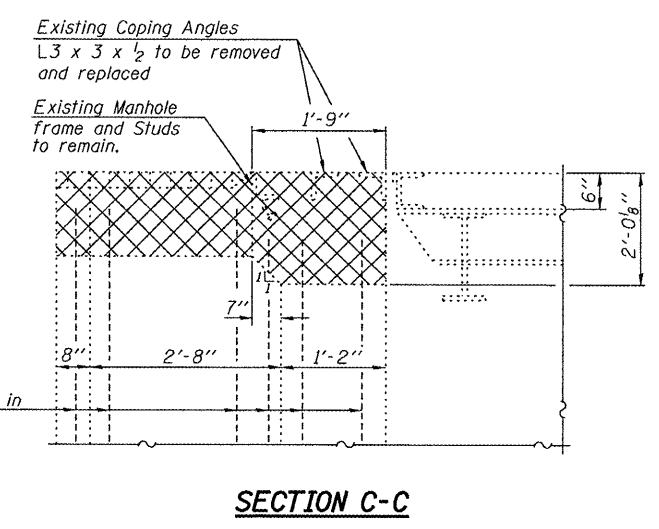
Contract #64D93 *(81-IWS-2)M-1

 Indicates concrete to be removed as Concrete Removal.



**Existing reinforcement extending into removed areas shall be cleaned, straightened and incorporated into the new construction. Cost included with Concrete Removal.

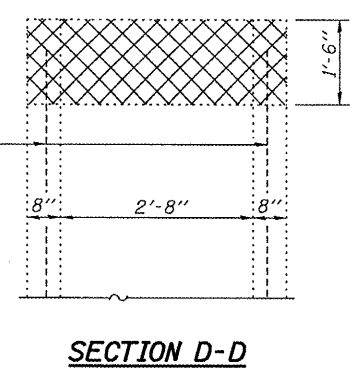
Existing Coping Angle L 3x3x1/2 to be removed and replaced
Existing Approach Slab
Existing Approach Pavement to be removed and replaced. See Roadway Plans.



Note: Cost of removal of coping angles (L 3x3x1/2), excavation and P/JF included in Concrete Removal.

**Reuse existing #5 bars in sidewall and in walls of manhole pit.

**Reuse existing #5 bars in sidewall and in walls of manhole pit.



BILL OF MATERIAL

Item	Unit	Total
Concrete Removal	Cu. Yd.	11.6

CONCRETE REMOVAL DETAILS
ROCK ISLAND WEIGH STATION
F.A.I. ROUTE 80 SEC. (81-IWS-2)M-1
ROCK ISLAND COUNTY
STATION 144+00.00

DESIGNED Patrick Petrone
CHECKED Stephen M. Ryan
DRAWN BECKY M. LEACH
CHECKED PMP/SMR

May 7, 2008
EXAMINED Thomas J. Damgallo
PASSED Robert G. Anderson