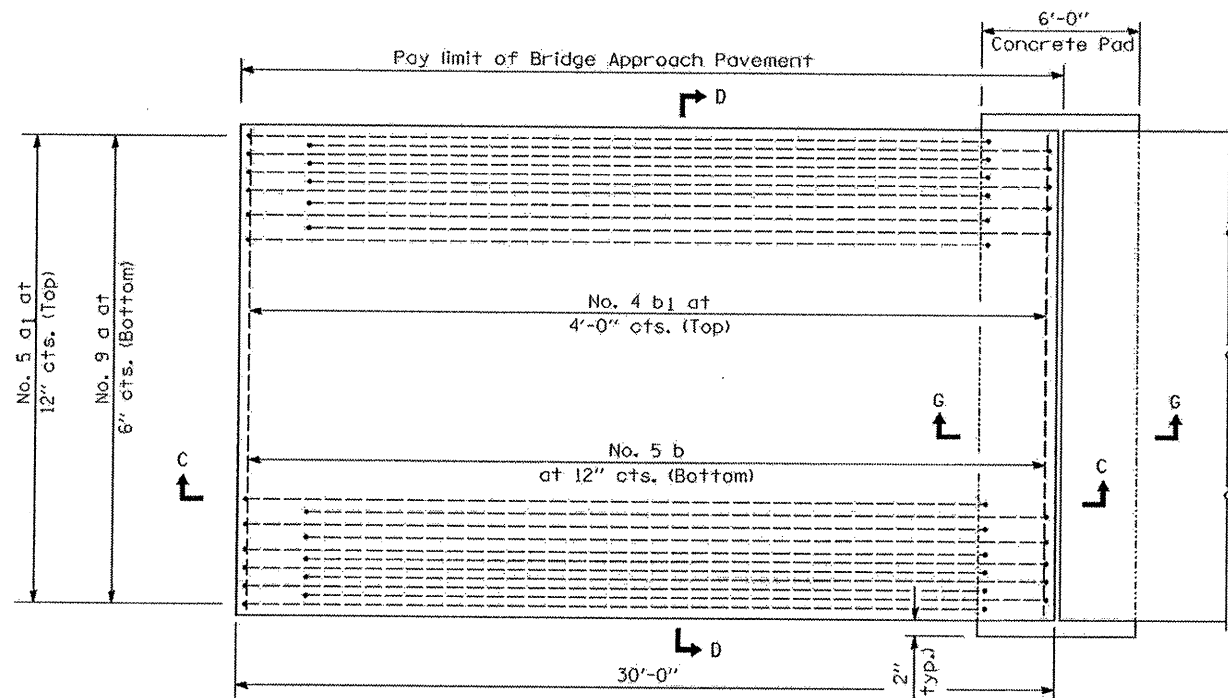
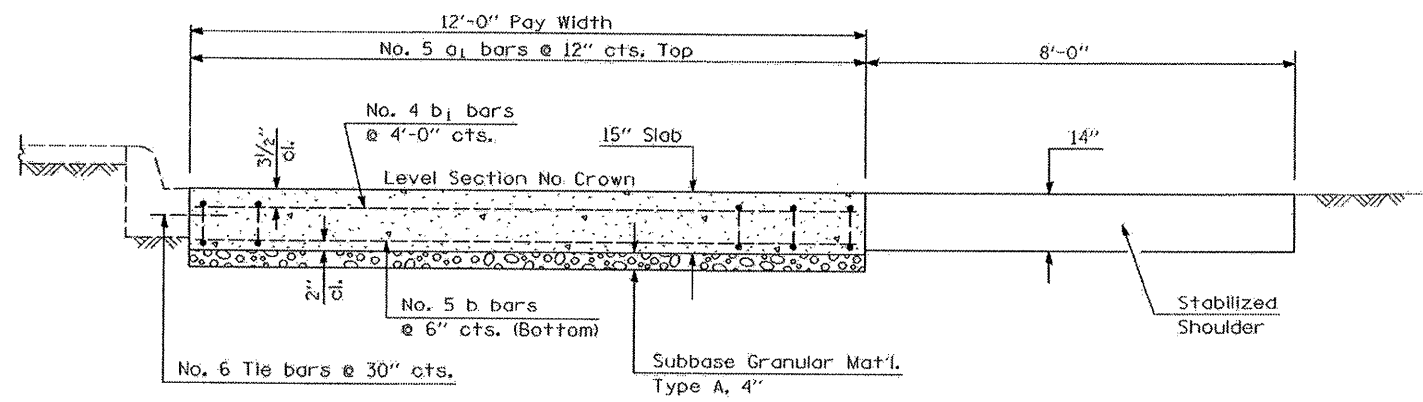


F.A.I. RTE.	SECTION	COUNTY	TOTAL SHEETS	SHEET NO.
80	(81-1WS-2M-1	ROCK ISLAND	18	17



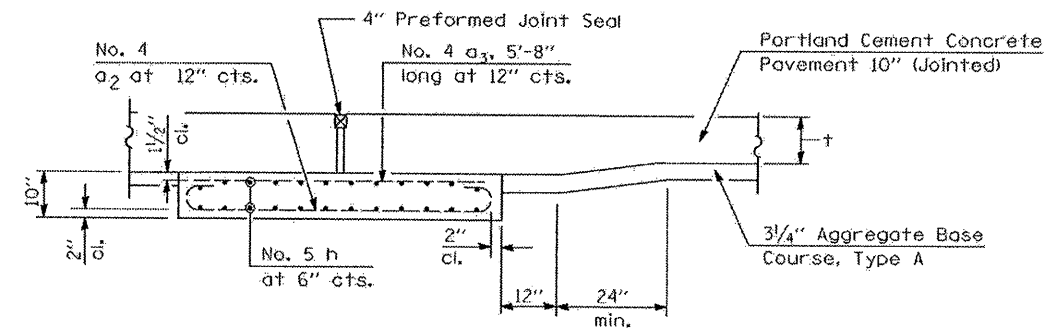
PLAN - WITHOUT SKEW

* Saw \perp or lane edge if poured two or more lane widths at a time.



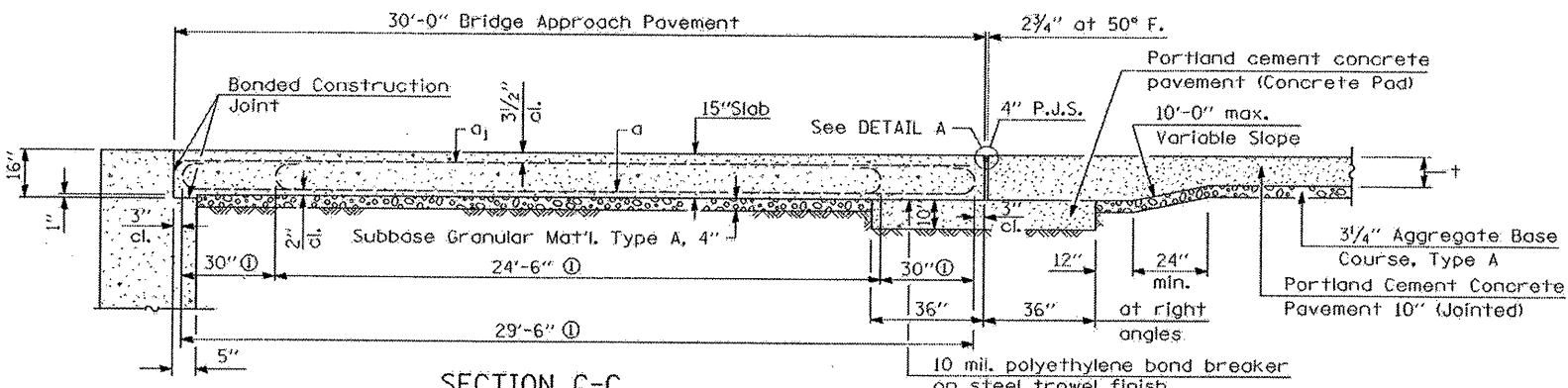
SECTION D-D

(See Plan for Dimensions not shown)
All reinforcement bars shall be epoxy coated.



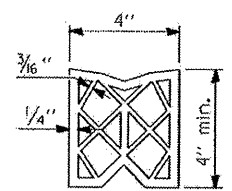
SECTION G-G - RIGID PAVEMENT

(Showing reinforcement)

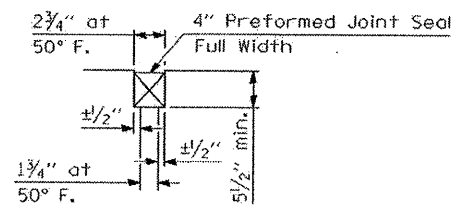


SECTION C-C

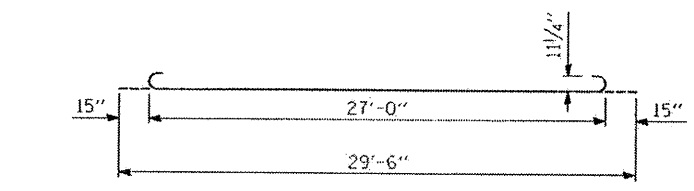
ⓐ Stagger No. 9 a bars as shown on plan - full width



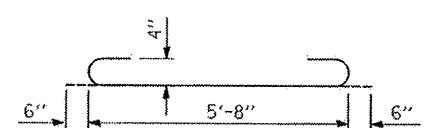
PREFORMED JOINT SEAL



DETAIL A



BAR a



BAR a2

DESIGN STRESSES

$f_y = 60,000$ p.s.i.
 $f'_c = 3,500$ p.s.i.
 $n = 8.5$

GENERAL NOTES

THICKNESS-"t"=Thickness of Pavement.
See Standard 421001 for reinforcement details not shown.
See Standard 420001 for joint details not shown.

ILLINOIS DEPARTMENT OF TRANSPORTATION
BRIDGE APPROACH PAVEMENT
SPECIAL

F.A.I. 80 (I-80)
SECTION (81-1WS-2M-1)
ROCK ISLAND COUNTY

SCALE: N/A
DATE: 12-08-07
DRAWN BY: CADD
CHECKED BY:

PLOT DATE = Wed Mar 12 13:22:09 2008
 PLOT SCALE = 1/8"=1'-0"
 USER NAME = d121212