

SQUAD ENGINEER: JUSTIN RUSFELDT (815) 284-5900

PROJECT ENGINEER: SCOTT KULLERSTRAND

F.A.I. RTE.	SECTION	COUNTY	TOTAL SHEETS	SHEET NO.
80	181-1WS-2M-1	ROCK ISLAND	18	1
FED. ROAD DIST. NO.	ILLINOIS	CONTRACT NO. 64D93		

STATE OF ILLINOIS
DEPARTMENT OF TRANSPORTATION
DIVISION OF HIGHWAYS

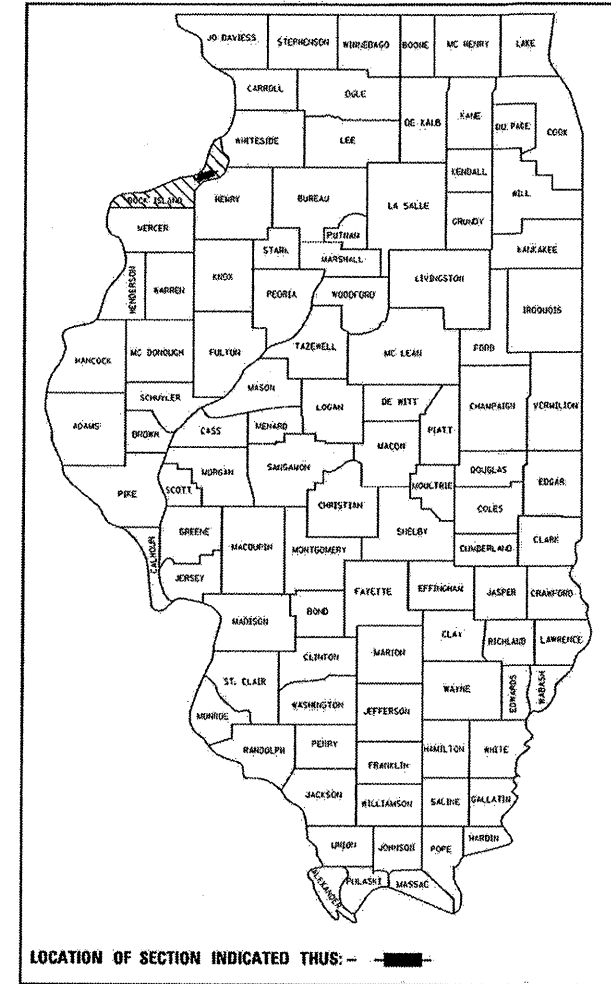
PROPOSED HIGHWAY PLANS

F.A.I. ROUTE 80 (I-80)
SECTION (81-1WS-2)M-1

ROCK ISLAND COUNTY

C-92-074-08

D-92-029-08



INDEX OF SHEETS

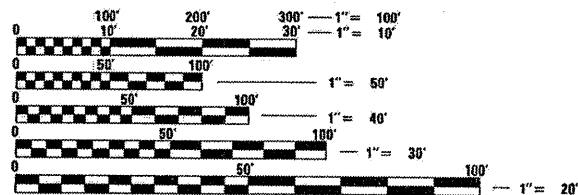
- 1 COVER SHEET/INDEX OF SHEETS
- 2-3 SUMMARY OF QUANTITIES
- 4 GENERAL NOTES
- 5-6 TYPICAL SECTIONS
- 7-8 HORIZONTAL & VERTICAL CONTROL
- 9-10 REMOVAL PLANS
- 11 PROPOSED PLANS
- 12-14 PIT WALL REPAIR PLANS
- 17 BRIDGE APPROACH PAVEMENT SPECIAL
- 18 WEIGH STATION RAMP CLOSURE DETAIL

HIGHWAY STANDARDS

- 000001-05 STANDARD SYMBOLS, ABBREVIATIONS, & PATTERNS
- 001001-01 AREAS OF REINFORCEMENT BARS
- 001006 DECIMAL OF AN INCH & OF A FOOT
- 420001-07 PAVEMENT JOINTS
- 420101-04 7.2M (24') JOINTED PCC PAVEMENT
- 701001-01 OFF-RD OPERATIONS, 2L, 2W, MORE THAN 4.5M (15') AWAY
- 701006-02 OFF-RD OPERATIONS, 2L, 2W 4.5M (15') TO 600MM (24") FROM PAVEMENT EDGE
- 701901 TRAFFIC CONTROL DEVICES
- 720011 METAL POSTS FOR SIGNS, MARKERS & DELINEATORS
- 728001 TELESCOPING STEEL SIGN SUPPORT
- 729001 APPLICATIONS OF TYPES A & B METAL POSTS (FOR SIGNS & MARKERS)



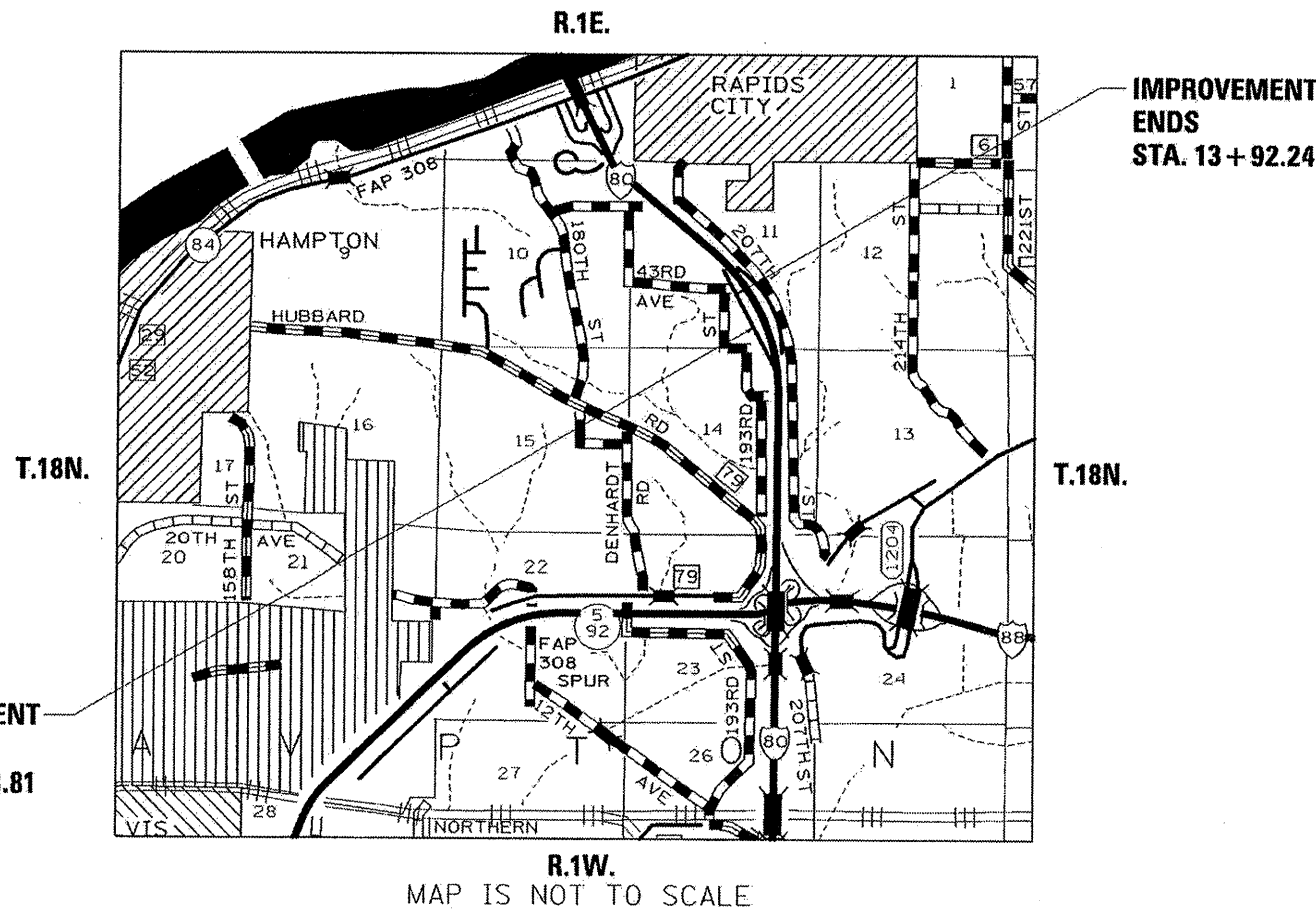
TOWNSHIP, HAMPTON SECTION 11



FULL SIZE PLANS HAVE BEEN PREPARED USING STANDARD ENGINEERING SCALES. REDUCED SIZED PLANS WILL NOT CONFORM TO STANDARD SCALES. IN MAKING MEASUREMENTS ON REDUCED PLANS, THE ABOVE SCALES MAY BE USED.

J.U.L.I.E.
JOINT UTILITY LOCATION INFORMATION FOR EXCAVATION
1-800-892-0123

CONTRACT NO. 64D93



IMPROVEMENT
BEGINS
STA. 12 + 08.81

IMPROVEMENT
ENDS
STA. 13 + 92.24

NET LENGTH OF PROJECT = 183.5 LIN. FEET
GROSS LENGTH OF PROJECT = 183.5 LIN. FEET

STATE OF ILLINOIS
DEPARTMENT OF TRANSPORTATION
DIVISION OF HIGHWAYS

SUBMITTED *March 12, 2008*
George F. Ryan
DEPUTY DIRECTOR OF HIGHWAYS, REGION ENGINEER

May 9, 2008
Eric E. Harms
INTERIM ENGINEER OF DESIGN AND ENVIRONMENT

May 9, 2008
Christine M. Reed
DIRECTOR OF HIGHWAYS, CHIEF ENGINEER

PRINTED BY THE AUTHORITY
OF THE STATE OF ILLINOIS

I-80

SUMMARY OF QUANTITIES

URBAN
Y222

PAY CODE	ITEM	UNIT	QUANTITY
35100100	AGGREGATE BASE COURSE, TYPE A	TON	70
42000501	PORTLAND CEMENT CONCRETE PAVEMENT 10" (JOINTED)	SQ YD	80
42001400	BRIDGE APPROACH SLAB PAVEMENT (SPECIAL)	SQ YD	54
42400100	PORTLAND CEMENT CONCRETE SIDEWALK 4 INCH	SQ FT	780
44000100	PAVEMENT REMOVAL	SQ YD	80
44000600	SIDEWALK REMOVAL	SQ FT	780
44000700	APPROACH SLAB REMOVAL	SQ YD	54
44002000	CURB REMOVAL	FOOT	96
44002020	CONCRETE MEDIAN SURFACE REMOVAL	SQ FT	672
44004250	PAVED SHOULDER REMOVAL	SQ YD	8
44213200	SAW CUTS	FOOT	14
48301000	PROTECTIVE COAT	SQ YD	21
50102400	CONCRETE REMOVAL	CU YD	11.6
50300225	CONCRETE STRUCTURES	CU YD	11.6

FILE NAME =
c:\projects\p202908\02908shs.dgn

USER NAME = dvtzlersa
PLOT SCALE = 20,0000' / IN.
PLOT DATE = Wed Mar 12 13:21:0 2008

DESIGNED -	REVISED -
DRAWN -	REVISED -
CHECKED -	REVISED -
DATE -	REVISED -

STATE OF ILLINOIS
DEPARTMENT OF TRANSPORTATION

SUMMARY OF QUANTITIES

SCALE: SHEET NO. OF SHEETS STA. TO STA.

F.A.I. RTE.	SECTION	COUNTY	TOTAL SHEETS	SHEET NO.
80	081-1W5-2M-1	ROCK ISLAND	18	2
FED. ROAD DIST. NO.			ILLINOIS FED. AID PROJECT	
			CONTRACT NO. 64D93	

SUMMARY OF QUANTITIES

URBAN
Y222

PAY CODE	ITEM	UNIT	QUANTITY
50500405	FURNISHING AND ERECTING STRUCTURAL STEEL	POUND	3860
50800205	REINFORCEMENT BARS, EPOXY COATED	POUND	1080
60228400	MANHOLES, SPECIAL	EACH	1
60603800	COMBINATION CONCRETE CURB AND GUTTER, TYPE B-6.12	FOOT	96
60618300	CONCRETE MEDIAN SURFACE, 4 INCH	SQ FT	672
67100100	MOBILIZATION	L SUM	1
70400600	RELOCATE TEMPORARY CONCRETE BARRIER (STATE OWNED)	FOOT	56
* 78001110	PAINT PAVEMENT MARKING - LINE 4"	FOOT	367
81400100	HANDHOLE	EACH	1
88600400	DETECTOR LOOP, SPECIAL	FOOT	51
XX005743	REMOVE AND RELOCATE EXISTING METAL POLE	EACH	1
Z0017202	DOWEL BARS 1 1/2"	EACH	20
Z0075300	TIE BARS	EACH	112

*

* SPECIALTY ITEM

FILE NAME = c:\projects\p202908\d02908shts.dgn	USER NAME = ditzler	DESIGNED -	REVISED -	STATE OF ILLINOIS DEPARTMENT OF TRANSPORTATION	SCHEDULE OF QUANTITIES			F.A.I RTE. 80	SECTION (81-1WS-2M-1	COUNTY ROCK ISLAND	TOTAL SHEETS 18	SHEET NO. 3
		DRAWN -	REVISED -									
		CHECKED -	REVISED -									
		DATE -	REVISED -									
PLOT SCALE = 20,000' / IN.		PLOT DATE = Wed Mar 12 13:12:10 2008					SCALE: SHEET NO. OF SHEETS STA. TO STA.			FED. ROAD DIST. NO. [ILLINOIS] FED. AID PROJECT CONTRACT NO. 64093		

GENERAL NOTES

ROUTE NO.	SEC.	COUNTY	TOTAL SHEETS	SHEET NO.
FAI 80	(81-1WS-2)M-1	Rock Island	18	4
FED ROAD DIST. NO.	ILLINOIS	PROJECT		
Contract #64D93				

The Contractor shall be responsible for protecting utility property during construction operations as outlined in Article 107.31 of the Standard Specifications. A minimum of 48 hours advance notice is required for non-emergency work. The JULIE number is 800-892-0123. The following listed utilities located within the project limits or immediately adjacent to the project construction limits are members of JULIE:

Mr. Dave Creen
AT&T
635-18th Street
Rock Island, IL 61201
(309)-793-4456

Mr. Matthew J. Chancellor
MidAmerican Energy Company
2811 5th Ave.
Rock Island, IL 61201
(309)-793-3833

Mr. Steve Hampton
MidAmerican Energy Company
2811 5th Ave.
Rock Island, IL 61201
(309)-793-3707

Mr. Davis Day
Frontier / Citizens
684 N. Broad / P.O. Box 12
Lanark, IL 61046
(815)-493-1101

Mr. Dennis Jarding
Mediacom
3900 - 26th Avenue
Moline, IL 61265
(309)-743-4750

Rapid City Village Office
1204 - 4th Ave.
Rapid City, IL 61278
(309)-496-2321

JULIE 1-800-892-0123

The Contractor shall seed and restore all disturbed areas within the project limits, this work shall be included in the cost of "REMOVAL" pay items. Seeding Class 1 in front of properties where the grass will be mowed.

Previously pugmilled stockpiles of "Type A" older than 1 month will not be approved for use until a moisture check is run to verify moisture content. Material shipped to projects without being tested will not be accepted.

Except for the top 75 mm (3"), all aggregate bases and subbases 300 mm (12") in thickness shall be constructed of aggregate gradation CA-2. If the specified thickness exceeds 300 mm (12"), the bases or subbases shall be constructed of topsize 150 mm (6") breaker-run crushed stone with 70% to 90% by weight, passing the 4" sieve and 15% to 40% by weight, passing the 50 mm (2") size sieve, except for the top 75 mm (3"). The breaker-run crushed stone shall be reasonably uniformly graded from coarse to fine and be taken from a quarry ledge capable of producing Class "D" quality aggregate. The top 75 mm (3") shall be gradation CA-6 or CA-10 regardless of thickness. The water necessary to achieve compaction in all but the top 75 mm (3") layer may be added after the subbase or base course is placed on the grade.

Tie bars shall be installed to tie PCC appurtenance to adjacent existing concrete pavement.

Tie the following
to the existing
concrete pavement

Length, size, and
spacing of Tie Bars

PCC Base Course	Std. 353001	600 mm (24") long No. 20 (No. 6) @ 750 mm (30") centers
PCC Pavement	Std. 420101	600 mm (24") long No. 20 (No. 6) @ 750 mm (30") centers
Gutter or Curb & Gutter	Std. 606001	600 mm (24") long No. 20 (No. 6) @ 600 mm (24") centers

Tie bars to be installed in accordance with the applicable portions of the Article 420.05(b) of the Standard Specifications. See Highway Standard 420001 for detail on longitudinal construction joint grouted-in-place tie bar. The cost of the tie bars to be included in the cost of the PCC appurtenance adjacent to the existing pavement.

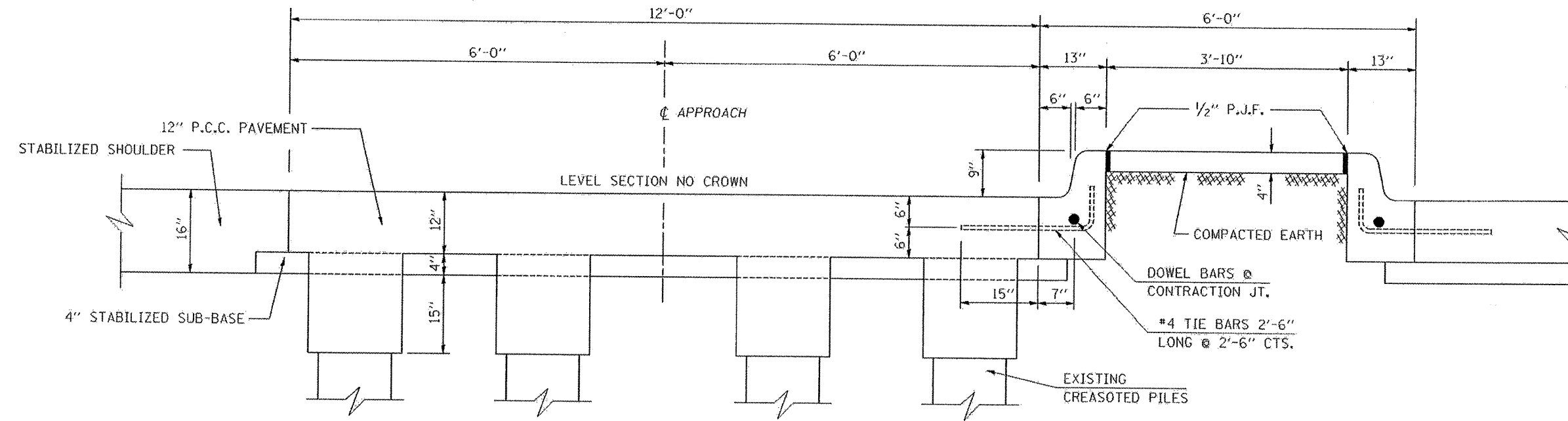
The Contractor shall be required to notify the Department of Transportation at (815)285-5474 one week prior to closing and opening of the weigh station. The Contractor shall also be required to notify the Operations Lieutenant, Darin Johnson, at (309) 752-4915, two weeks prior to closing and opening the weigh station.

Program #5
(Arch. Size)
Enlarge
200%
Enlarge 107%

EXISTING TYPICAL CROSS SECTION

THROUGH WEIGH BRIDGE APPROACH

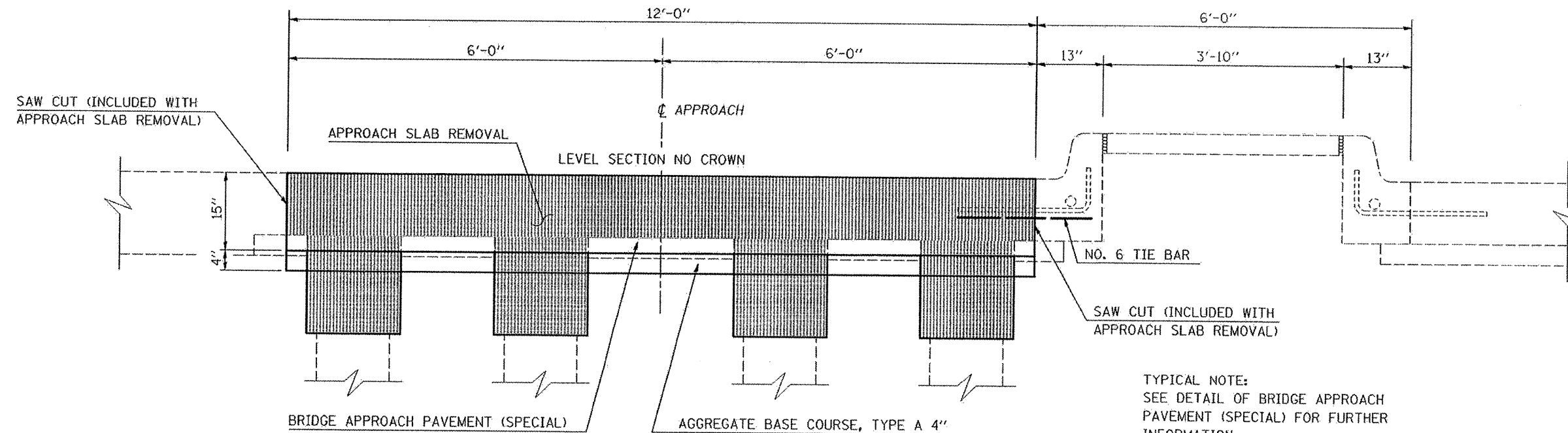
STATION 12+38.81 TO STATION 12+58.81
STATION 13+52.24 TO STATION 13+72.24



PROPOSED TYPICAL CROSS SECTION

THROUGH WEIGH BRIDGE APPROACH

STATION 12+38.81 TO STATION 12+58.81
STATION 13+52.24 TO STATION 13+72.24



TYPICAL NOTE:
SEE DETAIL OF BRIDGE APPROACH PAVEMENT (SPECIAL) FOR FURTHER INFORMATION.

FILE NAME =	USER NAME = ditzlerao	DESIGNED -	REVISED -
c:\projects\p202900\02900ahs.dgn		DRAWN -	REVISED -
		CHECKED -	REVISED -
		DATE -	REVISED -

STATE OF ILLINOIS
DEPARTMENT OF TRANSPORTATION

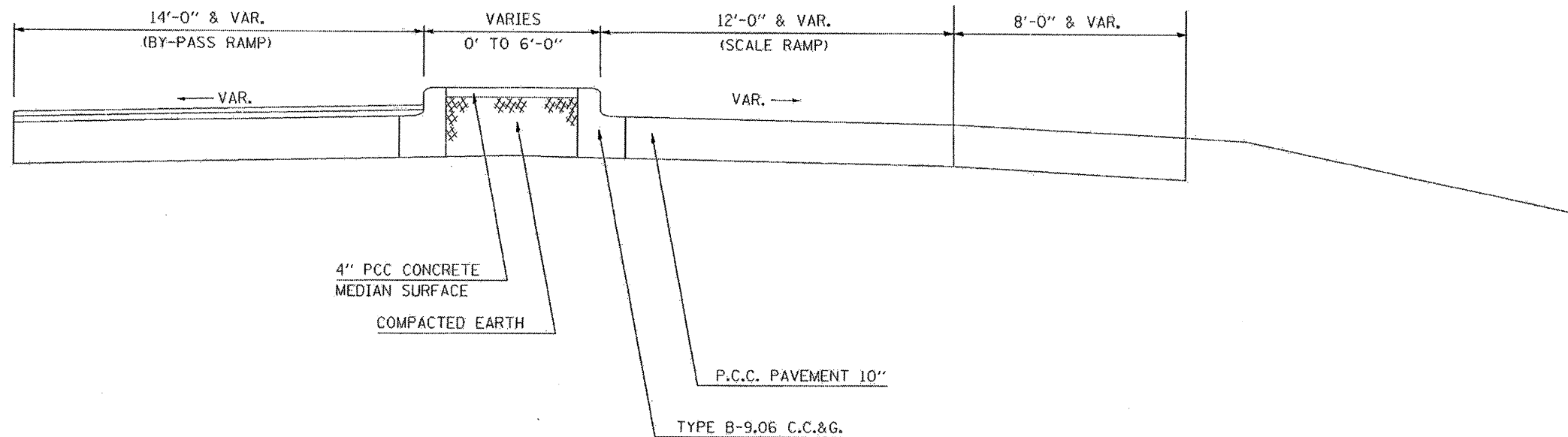
TYPICAL SECTIONS			
SCALE:	SHEET NO.	OF SHEETS	STA. TO STA.

F.A.T. RTE.	SECTION	COUNTY	TOTAL SHEETS	SHEET NO.
80	81-1WS-2M-1	ROCK ISLAND	18	5
FED. ROAD DIST. NO.			ILLINOIS FED. AID PROJECT	
			CONTRACT NO. 64D93	

EXISTING TYPICAL CROSS SECTION

WEIGH STATION - RAMPS

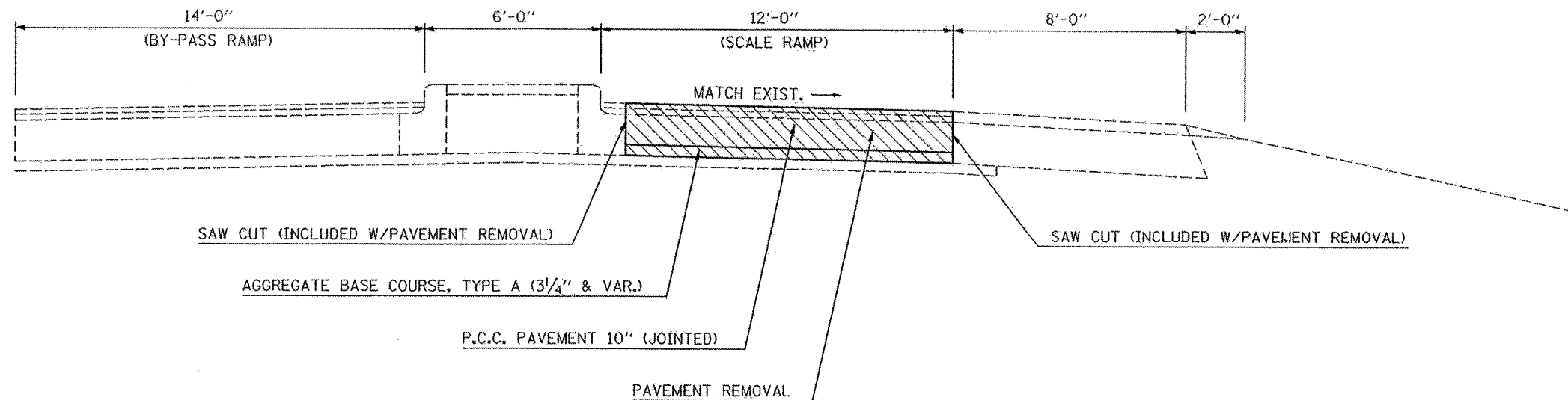
STATION 12+08.81 TO STATION 12+38.81
STATION 13+72.24 TO STATION 13+92.24



PROPOSED TYPICAL CROSS SECTION

WEIGH STATION - RAMPS

STATION 12+08.81 TO STATION 12+38.81
STATION 13+72.24 TO STATION 13+92.24



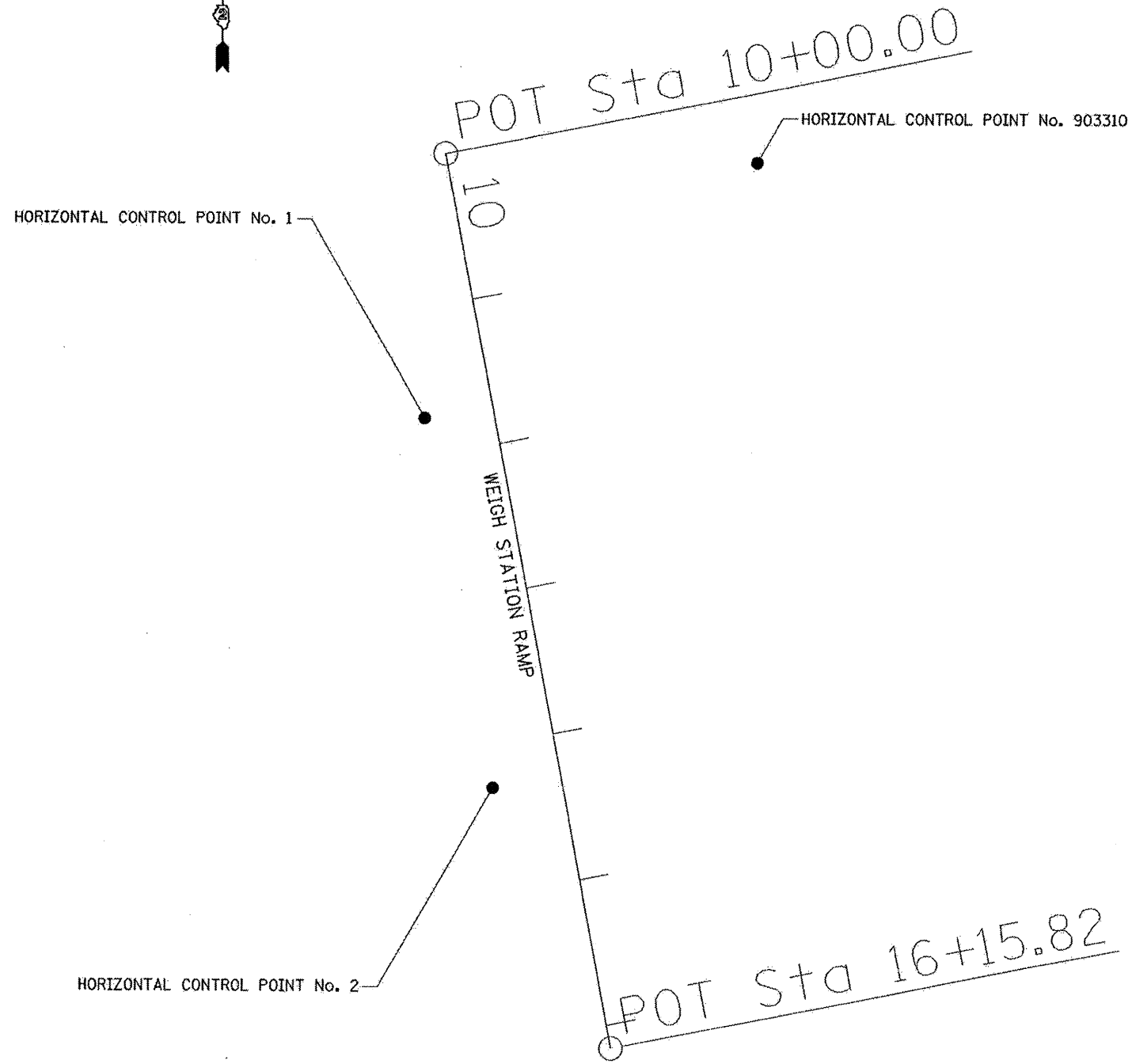
FILE NAME = c:\projects\p202908\vd02908shs.dgn	USER NAME = ditzlerso	DESIGNED -	REVISED -
		DRAWN -	REVISED -
		CHECKED -	REVISED -
		DATE -	REVISED -

**STATE OF ILLINOIS
DEPARTMENT OF TRANSPORTATION**

TYPICAL SECTIONS			
SCALE:	SHEET NO.	OF SHEETS	STA. TO STA.

F.A.I. RTE. 80	SECTION (81-1WS-2IM-1)	COUNTY ROCK ISLAND	TOTAL SHEETS 18	SHEET NO. 6
FED. ROAD DIST. NO.			ILLINOIS FED. AID PROJECT CONTRACT NO. 64093	

HORIZONTAL AND VERTICAL CONTROL



Chain EBSCALE contains:
1000 1001

Beginning chain EBSCALE description

Point 1000 N 1,781,161.6483 E 2,248,421.2847 Sta 10+00.0000

Course from 1000 to 1001 169° 02' 14.0783" Dist 615.8221'

Point 1001 N 1,780,557.0643 E 2,248,538.3961 Sta 16+15.8221

Ending chain EBSCALE description

FILE NAME = c:\projects\p202908\vd02908hvc.dgn	USER NAME = dizlorva	DESIGNED -	REVISED -
		DRAWN -	REVISED -
		CHECKED -	REVISED -
		DATE -	REVISED -

**STATE OF ILLINOIS
DEPARTMENT OF TRANSPORTATION**

HORIZONTAL AND VERTICAL CONTROL			
SCALE:	SHEET NO.	OF SHEETS	STA. TO STA.

F.A.I. RTE.	SECTION	COUNTY	TOTAL SHEETS	SHEET NO.
80	081-1WS-2M-1	ROCK ISLAND	18	7
FED. ROAD DIST. NO.			ILLINOIS FED. AID PROJECT	
			CONTRACT NO. 64D93	

HORIZONTAL AND VERTICAL CONTROL

HORIZONTAL CONTROL POINTS

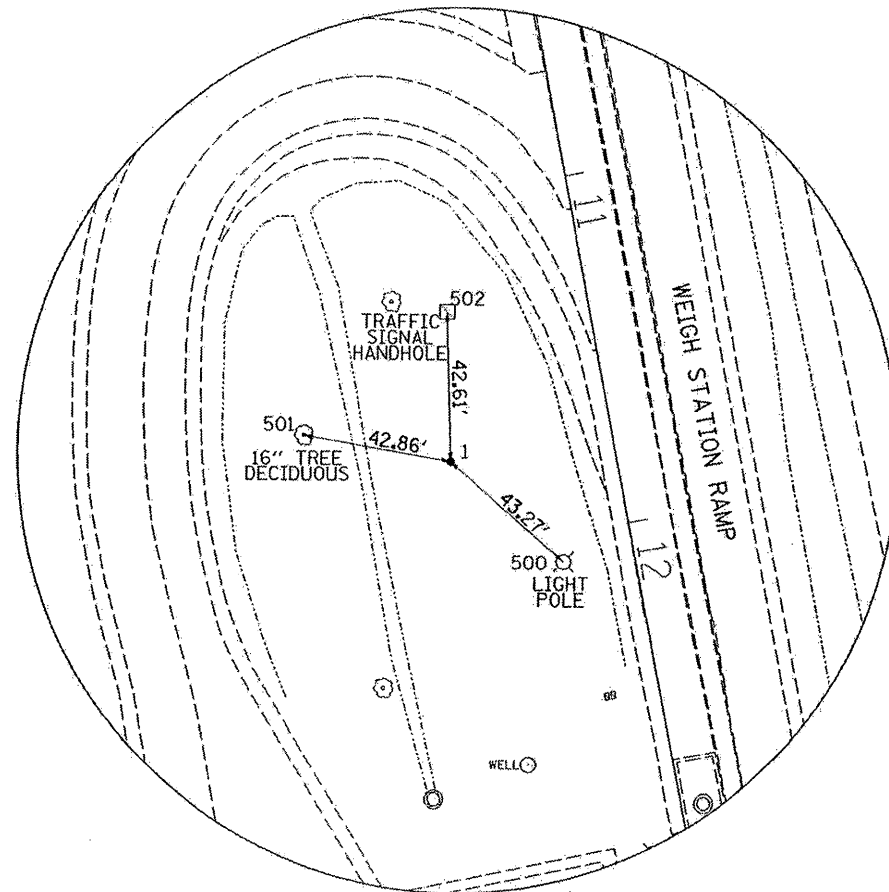
POINT	NORTH	EAST	ELEVATION	CHAIN	STATION	OFFSET	DESCRIPTION
1	1780982.3734	2248408.3186	693.3822	EBSCALE	11+73.5375	46.8223' RT	SURVEY POINT, PIN
2	1780732.2172	2248456.1068	695.7459	EBSCALE	14+28.2165	47.4786' RT	SURVEY POINT, PIN
903310	1781156.2220	2248633.9235	692.0208	EBSCALE	10+45.7649	207.7265' LT	PHOTO CONTROL H.& V., PIN

BENCH MARKS

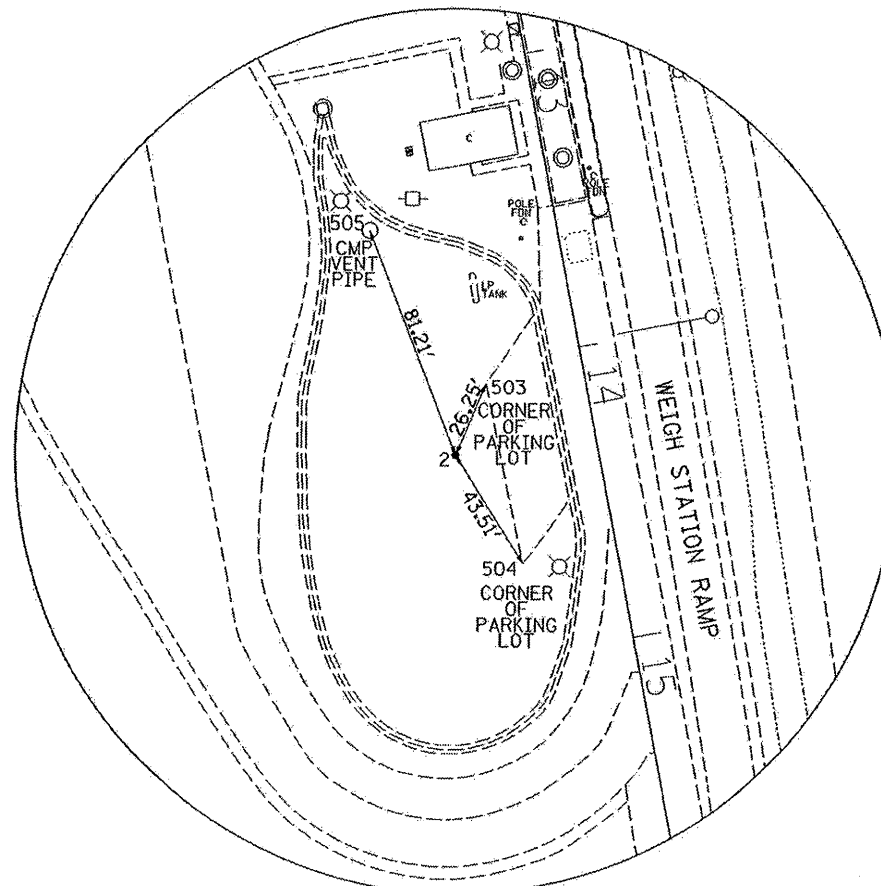
POINT	NORTH	EAST	ELEVATION	CHAIN	STATION	OFFSET	DESCRIPTION
410	1780779.3460	2248543.7940	692.6690	ebscale	13+98.6233	47.5709' LT	TRAFFIC SIGNAL FOUNDATION, CHISELED SQUARE

REFERENCE TIES

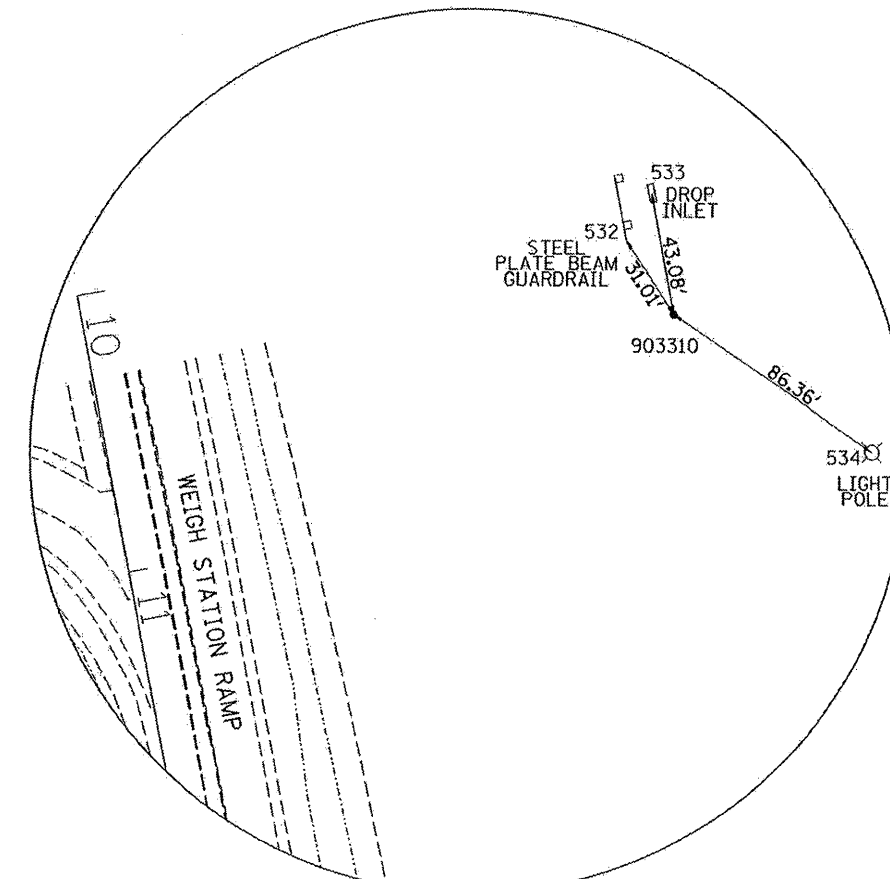
POINT	CHAIN	STATION	OFFSET	DESCRIPTION
500	ebscale	12+07.7474	20.3251' RT	LIGHT POLE
501	ebscale	11+58.3332	86.8943' RT	16" TREE DECIDUOUS
502	ebscale	11+31.4705	40.0646' RT	HANDHOLE, CORNER
503	ebscale	14+06.4193	32.8531' RT	PARKING LOT - EDGE, CORNER
504	ebscale	14+68.8519	31.9233' RT	PARKING LOT - EDGE, CORNER
505	ebscale	13+48.4434	62.6369' RT	VENT PIPE CMP
532	ebscale	10+17.1155	195.8709' LT	GUARDRAIL STEEL PLATE BEAM, END
533	ebscale	10+02.6891	207.8958' LT	DROP INLET, CENTER
534	ebscale	11+07.1553	268.4668' LT	LIGHT POLE, SHINER



HORIZONTAL CONTROL POINT No. 1



HORIZONTAL CONTROL POINT No. 2



HORIZONTAL CONTROL POINT No. 903310

FILE NAME = c:\projects\p202988\d029081wc.dgn

USER NAME = dtzleroo

DESIGNED -

REVISED -

DRAWN -

REVISED -

PLDT SCALE = 50.0000' / IN.

CHECKED -

REVISED -

PLOT DATE = Wed Mar 12 13:12:06 2008

DATE -

REVISED -

**STATE OF ILLINOIS
DEPARTMENT OF TRANSPORTATION**

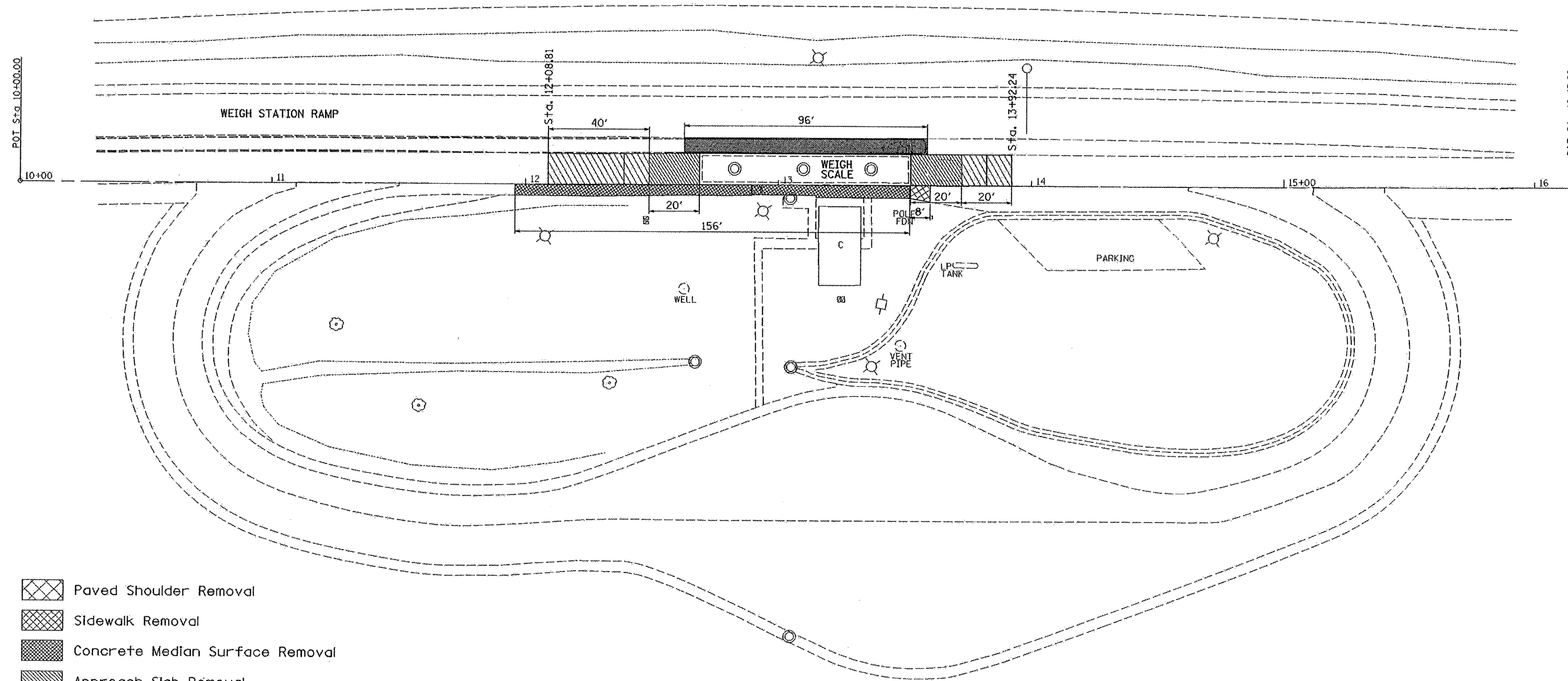
HORIZONTAL AND VERTICAL CONTROL

SCALE: SHEET NO. OF SHEETS STA. TO STA.

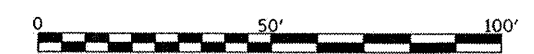
F.A.I. RTE.	SECTION	COUNTY	TOTAL SHEETS	SHEET NO.
80	(81-1WS-2IM-1	ROCK ISLAND	18	8
CONTRACT NO. 64093				

FED. ROAD DIST. NO. ILLINOIS FED. AID PROJECT

REMOVAL



- Paved Shoulder Removal
- Sidewalk Removal
- Concrete Median Surface Removal
- Approach Slab Removal
- Pavement Removal



FILE NAME = c:\projects\p202180\02108\shls.dgn	USER NAME = distlerse	DESIGNED -	REVISED -
		DRAWN -	REVISED -
		CHECKED -	REVISED -
		DATE -	REVISED -

**STATE OF ILLINOIS
DEPARTMENT OF TRANSPORTATION**

REMOVAL DETAIL

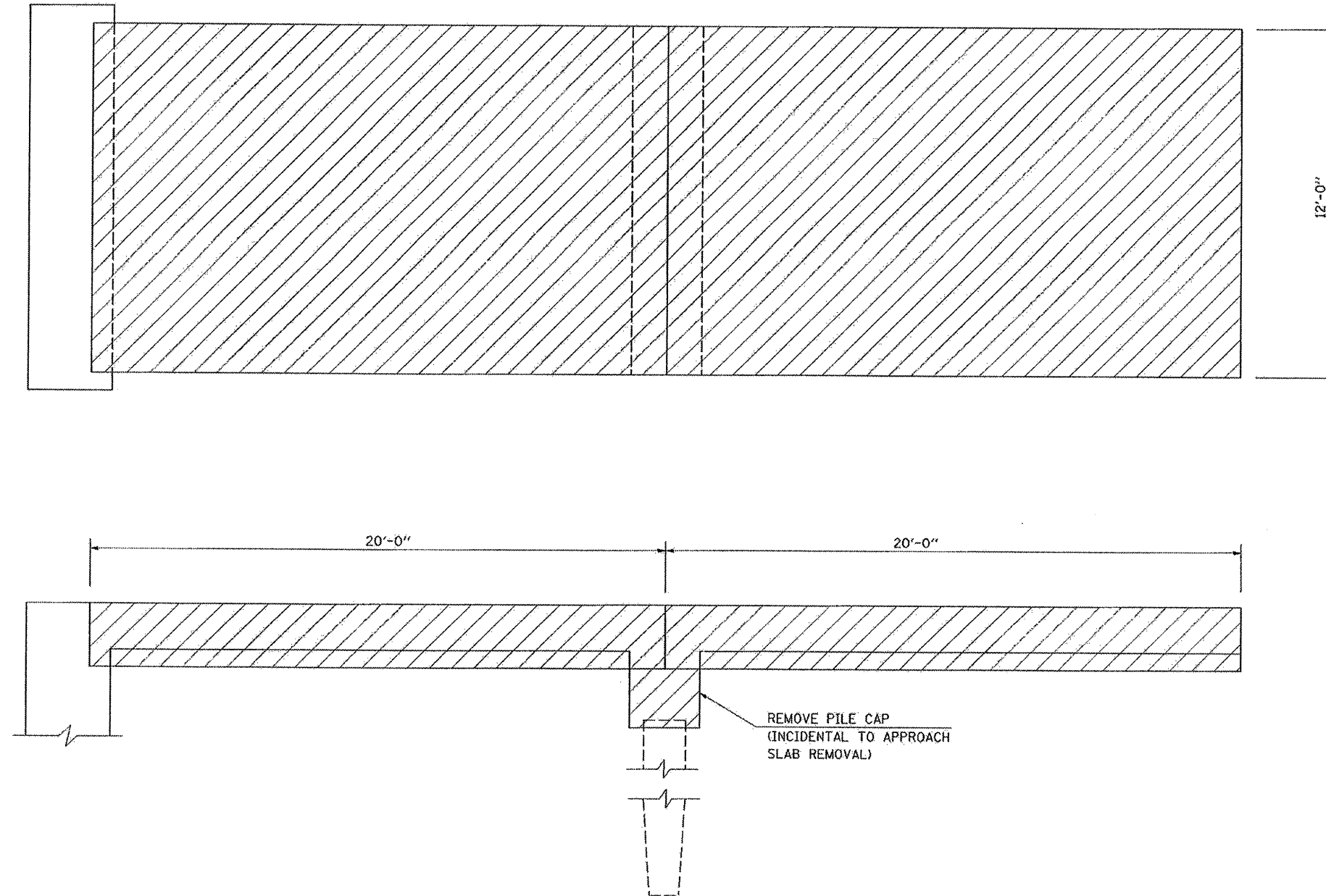
SCALE: 1" = 20'-0" SHEET NO. OF SHEETS STA. TO STA.

F.A.I. RTE.	SECTION	COUNTY	TOTAL SHEETS	SHEET NO.
80	(81-1WS-2M-1	ROCK ISLAND	18	9
FED. ROAD DIST. NO. [ILLINOIS] FED. AID PROJECT			CONTRACT NO. 64093	

F.A.I. RTE.	SECTION	COUNTY	TOTAL SHEETS	SHEET NO.
80	(81-1WS-2)M-1	ROCK ISLAND	18	10

DETAIL OF APPROACH SLAB REMOVAL

STATION 12+38.81 TO STATION 12+58.81
 STATION 13+52.24 TO STATION 13+72.24



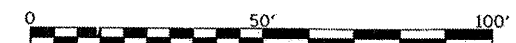
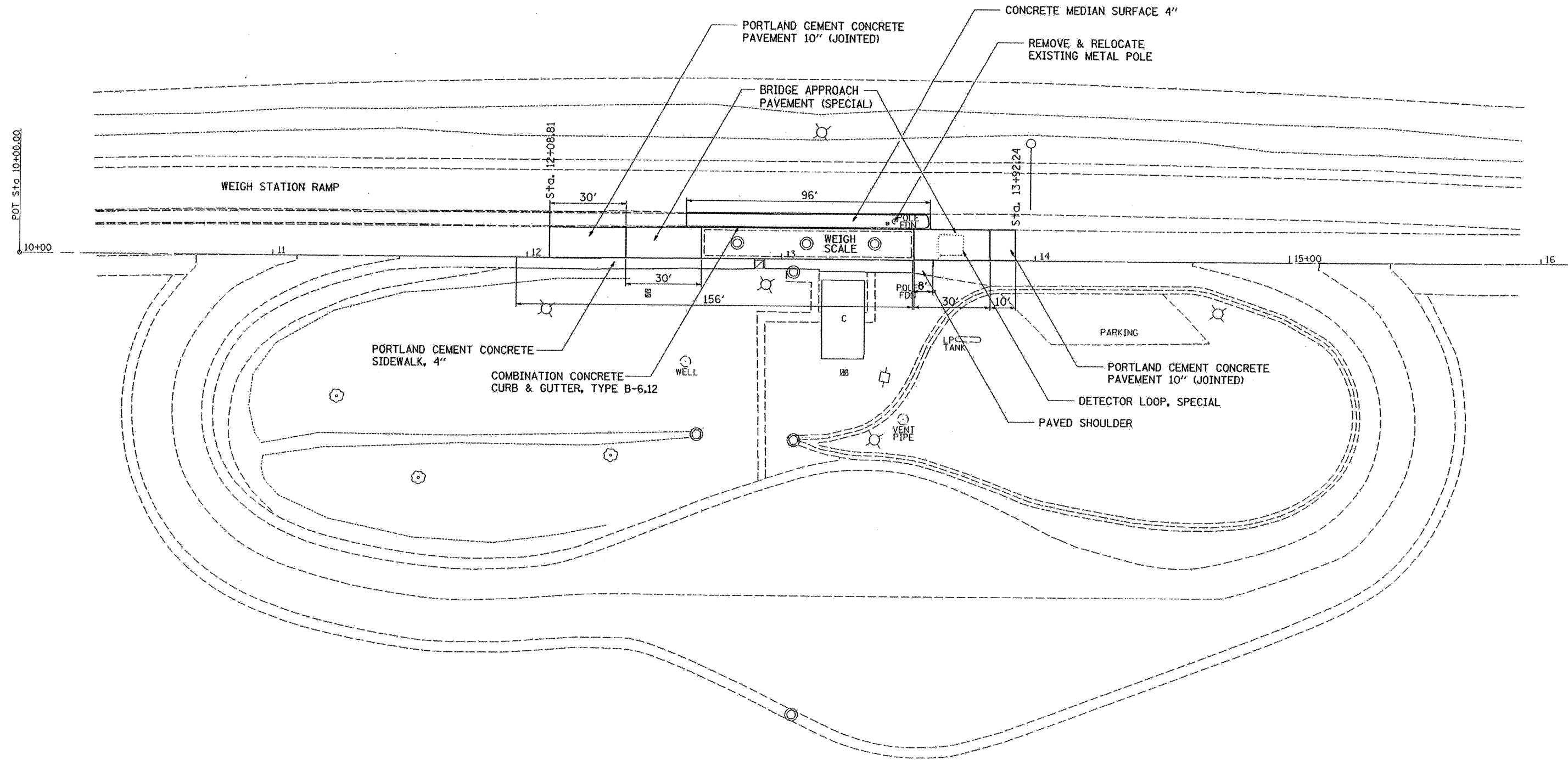
GENERAL NOTES:

1. EXISTING APPROACH SLAB SHALL BE REMOVED TO DEPTH NEEDED FOR CONSTRUCTION OF BRIDGE APPROACH PAVEMENT (SPECIAL). COST SHALL BE INCLUDED WITH CONTRACT UNIT PRICE PER SQUARE YARD FOR APPROACH SLAB REMOVAL. NO ADDITIONAL COMPENSATION SHALL BE ALLOWED.
2. VOID FROM REMOVAL OF PILE CAP SHALL BE FILLED WITH SUBBASE GRANULAR MATERIAL, TYPE A AND SHALL BE INCLUDED WITH CONTRACT UNIT PRICE PER SQUARE YARD FOR BRIDGE APPROACH PAVEMENT (SPECIAL). NO ADDITIONAL COMPENSATION SHALL BE ALLOWED.

PLOT DATE = Wed Mar 12 13:02:09 2008
 FILE NAME = c:\pwork\64093\81-1WS-2M-1.dgn
 PLOT SCALE = 1/8"=1'-0"
 USER NAME = dclara

ILLINOIS DEPARTMENT OF TRANSPORTATION
DETAIL OF APPROACH SLAB REMOVAL
 F.A.I. 80 (I-80)
 SECTION (81-1WS-2)M-1
 ROCK ISLAND COUNTY
 SCALE: N/A DRAWN BY: CADD
 DATE: 12-08-07 CHECKED BY:

PROPOSED



FILE NAME =	USER NAME = ditzlerse	DESIGNED -	REVISED -
c:\projects\p202908\022908shs.dgn		DRAWN -	REVISED -
		CHECKED -	REVISED -
		DATE -	REVISED -

**STATE OF ILLINOIS
DEPARTMENT OF TRANSPORTATION**

PROPOSED

SCALE: SHEET NO. OF SHEETS STA. TO STA.

F.A.I. RTE.	SECTION	COUNTY	TOTAL SHEETS	SHEET NO.
80	(81-1WS-2M-1	ROCK ISLAND	18	11
FED. ROAD DIST. NO. [ILLINOIS] FED. AID PROJECT			CONTRACT NO. 64D93	

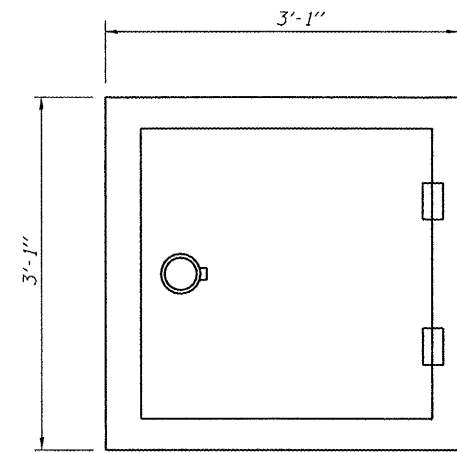
Existing Structure: The existing weigh station was built in 1966 as FAI 80, Sec. 81-IWS-1, Rock Island County. The upper 1'-6" of concrete pit perimeter is to be removed and replaced. Traffic to be detoured.

STATE OF ILLINOIS
DEPARTMENT OF TRANSPORTATION

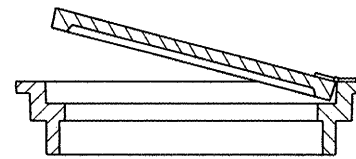
ROUTE NO.	SECTION	COUNTY	SHEET NO.	SHEET	SHEET NO. 1
FAI 80	*	Rock Island	3	1	5 SHEETS
FED. ROAD DIST. NO. 7	ILLINOIS	FED. AID PROJECT			
Contract #64D93			*(81-IWS-2)M-1		

INDEX OF SHEETS

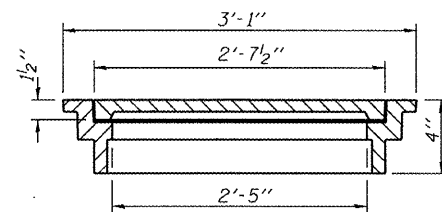
1. General Data
2. General Plan & Elevation
3. Concrete Removal Details
- 4.-5. Concrete Pit Details



PLAN



ELEVATION
(Showing hinge)



ELEVATION

MANHOLE LID & FRAME

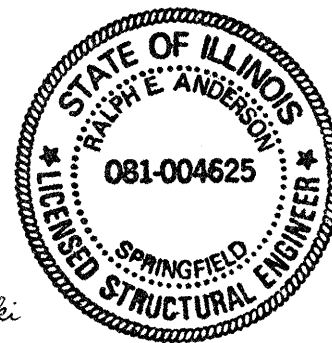
Note: The Manhole Lid and Frame shall be cast iron, heavy duty, manufactured by Neenah Foundry Company, Catalog No. R-6665-2PH. The cost shall include the Furnishing and Installation of the Manhole Lid and Frame and shall be for Manholes, Special paid for at the unit price each.

SCOPE OF WORK

1. Remove and replace existing manhole frame and lid.
2. Remove and replace the top 1'-6" of the concrete pit on the perimeter of the 4 platform scales.

TOTAL BILL OF MATERIAL

ITEM	UNIT	SUPER	SUB	TOTAL
Concrete Removal	Cu. Yd.		11.6	11.6
Concrete Structures	Cu. Yd.		11.6	11.6
Protective Coat	Sq. Yd.		21	21
Furnishing and Erecting Structural Steel	Pound		3860	3860
Reinforcement Bars, Epoxy Coated	Pound		1080	1080
Manholes, Special	Each		1	1



LOADING HS20-44

No future wearing surface allowed

DESIGN SPECIFICATIONS

1996 AASHTO w/ 1997 thru 2002 Interims

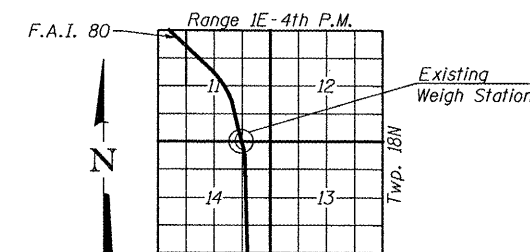
DESIGN STRESSES

NEW CONSTRUCTION

$f'_c = 3,500$ psi
 $f_y = 60,000$ psi (Reinforcement)
 $f_y = 36,000$ psi (Structural Steel AASHTO M270 Grade 36)

FIELD UNITS

$f_c = 1,000$ psi (Pit)
 $f_s = 20,000$ psi (Reinforcement)
 $f_s = 20,000$ psi (Structural Steel)



LOCATION SKETCH

GENERAL DATA
ROCK ISLAND WEIGH STATION
F.A.I. ROUTE 80 SEC. (81-IWS-2)M-1
ROCK ISLAND COUNTY
STATION 144+00.00

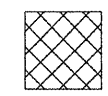
DESIGNED	Patrick M. Petrone
CHECKED	Stephen M. Ryan
DRAWN	BECKY M. LEACH
CHECKED	pmp/smr

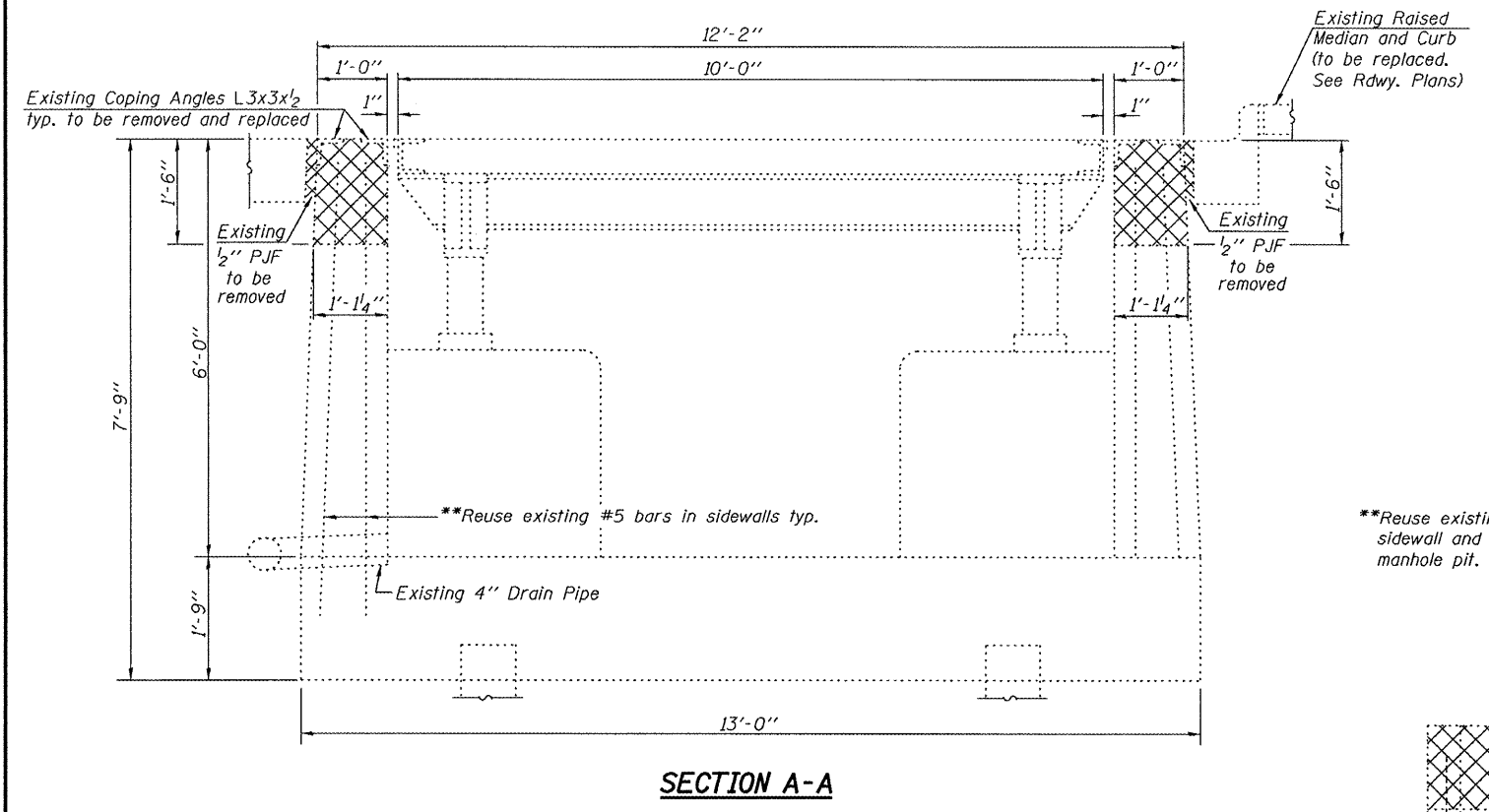
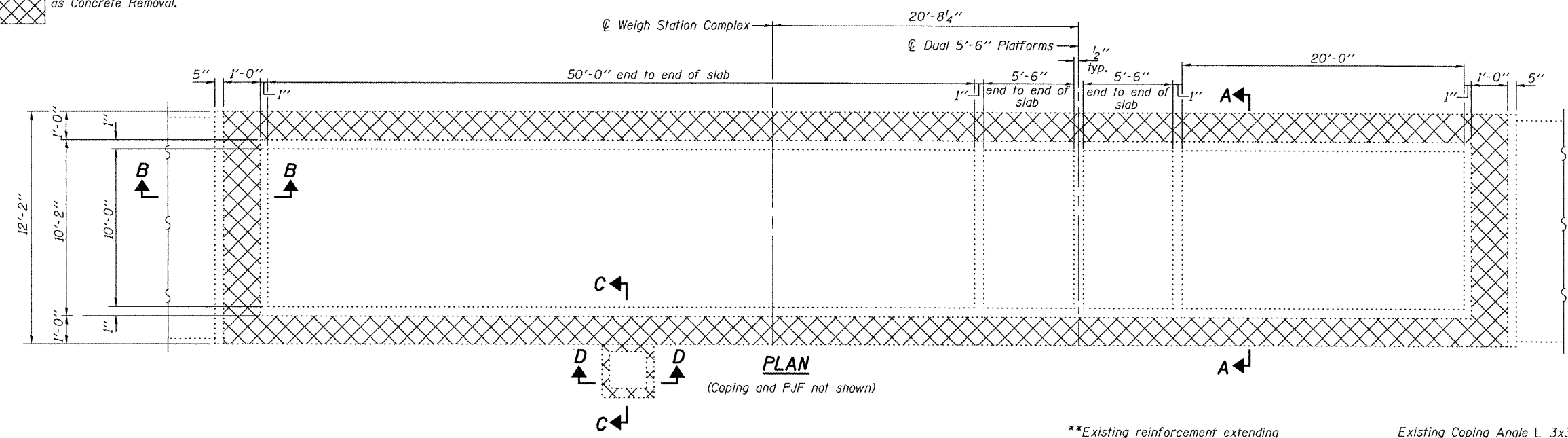
May 7, 2008
 EXAMINED Thomas J. Domagala
 ENGINEER OF BRIDGE DESIGN
 PASSED Robert C. Nelson
 ENGINEER OF BRIDGES AND STRUCTURES

EXPIRES 11-30-2008

STATE OF ILLINOIS
DEPARTMENT OF TRANSPORTATION

ROUTE NO.	SECTION	COUNTY	SHEET	SHEET NO.
FAI 80	*	Rock Island	18 14	3
FED. ROAD DIST. NO. 7		ILLINOIS	FED. AID PROJECT	
			Contract #64D93 *(81-IWS-2)M-1	

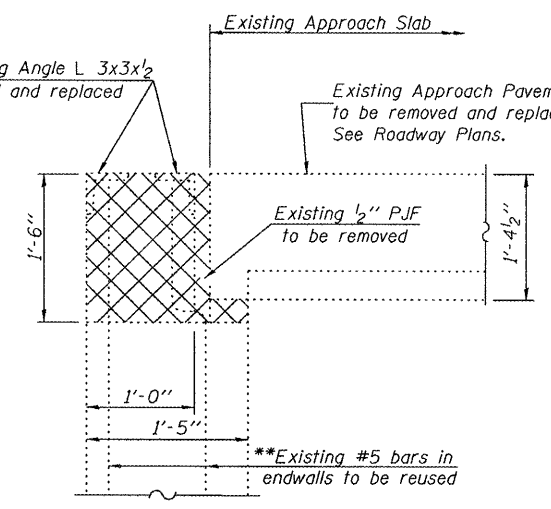
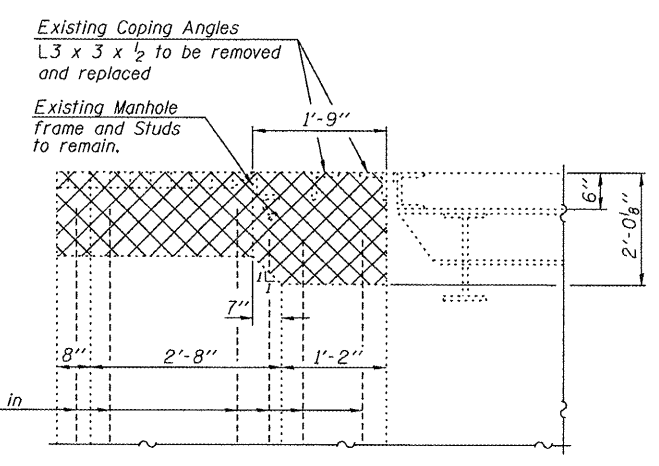
 Indicates concrete to be removed as Concrete Removal.



**Existing reinforcement extending into removed areas shall be cleaned, straightened and incorporated into the new construction. Cost included with Concrete Removal.

Existing Coping Angle L 3x3x1/2 to be removed and replaced

Existing Approach Pavement to be removed and replaced. See Roadway Plans.

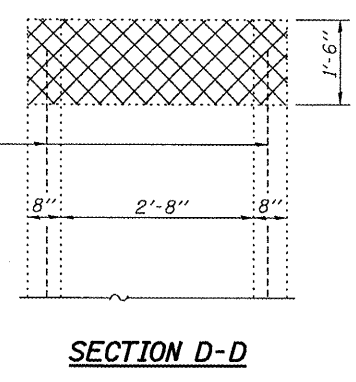


Note: Cost of removal of coping angles (L3x3x1/2), excavation and P.J.F. included in Concrete Removal.

BILL OF MATERIAL

Item	Unit	Total
Concrete Removal	Cu. Yd.	11.6

CONCRETE REMOVAL DETAILS
ROCK ISLAND WEIGH STATION
F.A.I. ROUTE 80 SEC. (81-IWS-2)M-1
ROCK ISLAND COUNTY
STATION 144+00.00



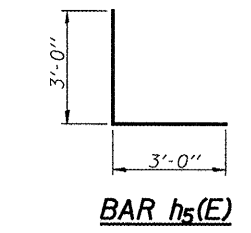
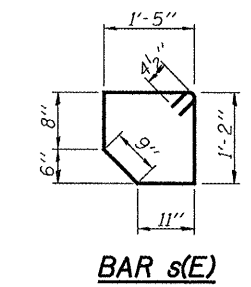
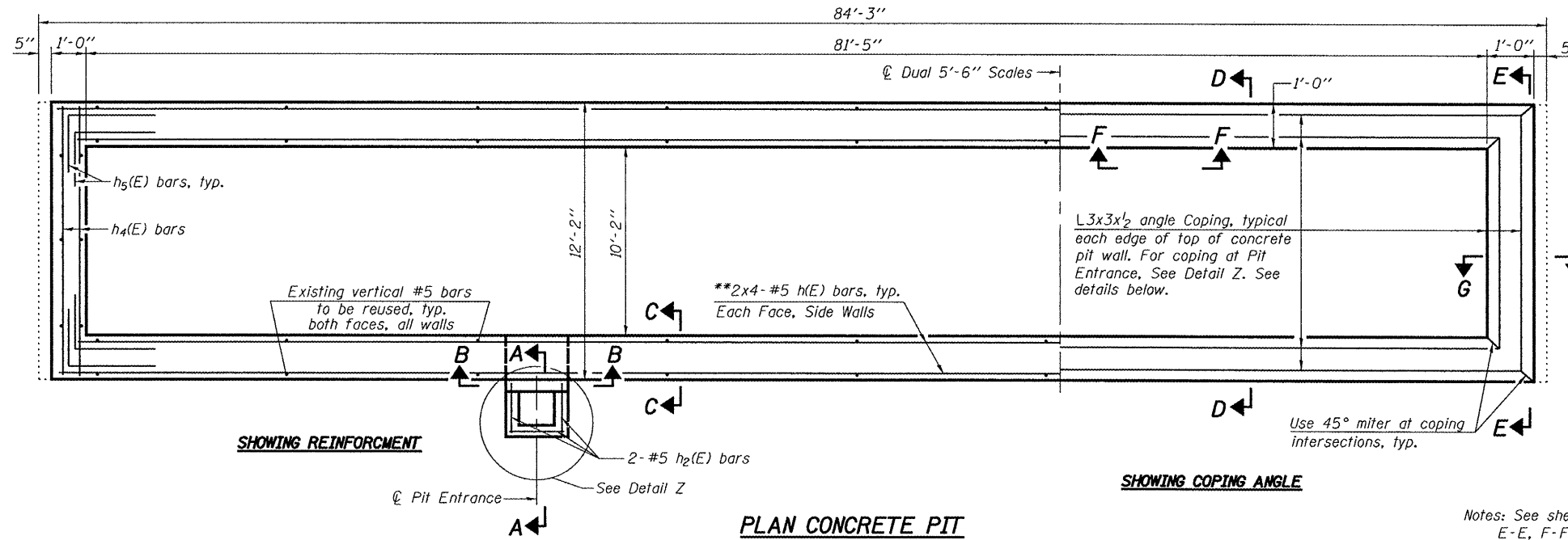
DESIGNED Patrick Petrone
CHECKED Stephen M. Ryan
DRAWN BECKY M. LEACH
CHECKED PMP/SMR

May 7, 2008
EXAMINED Thomas J. Damgallo
PASSED Robert J. Anderson
ENGINEER OF BRIDGES AND STRUCTURES

STATE OF ILLINOIS
DEPARTMENT OF TRANSPORTATION

ROUTE NO.	SECTION	COUNTY	SHEETS	SHEET	SHEET NO.
FAI 80	*	Rock Island	18	15	5 SHEETS
FED. ROAD DIST. NO. 7	ILLINOIS	FED. AID PROJECT			

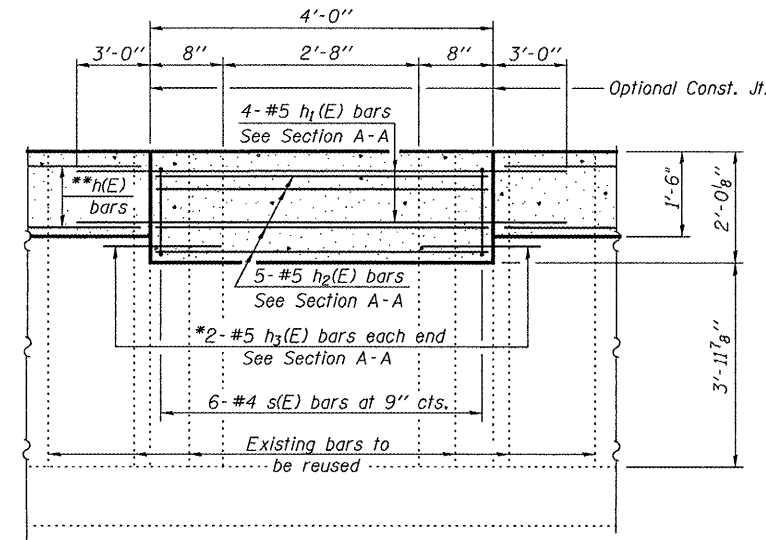
Contract #64D93 *(81-IWS-2)M-1



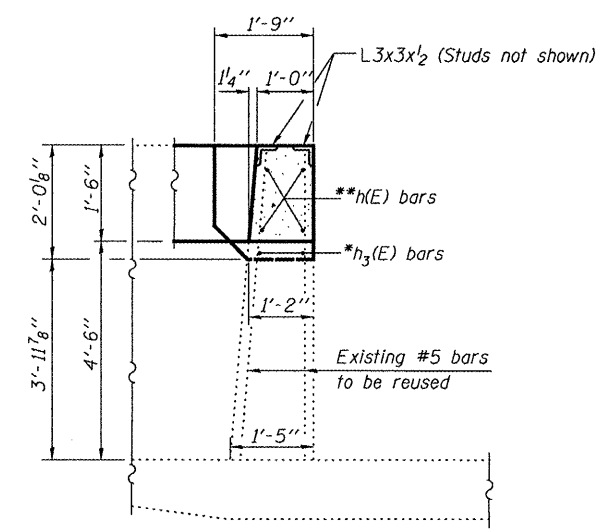
Notes: See sheet 5 of 5 for Sections A-A, D-D, E-E, F-F and G-G.
Existing reinforcement extending into removed areas shall be cleaned, straightened and incorporated into the new construction. Cost included with Concrete Removal.

*Epoxy grout h3(E) bars in 9" min. drilled holes according to Section 584 of the Standard Specifications.
**Cut h(E) bar reinforcement in the wall at pit entrance. See Section B-B.

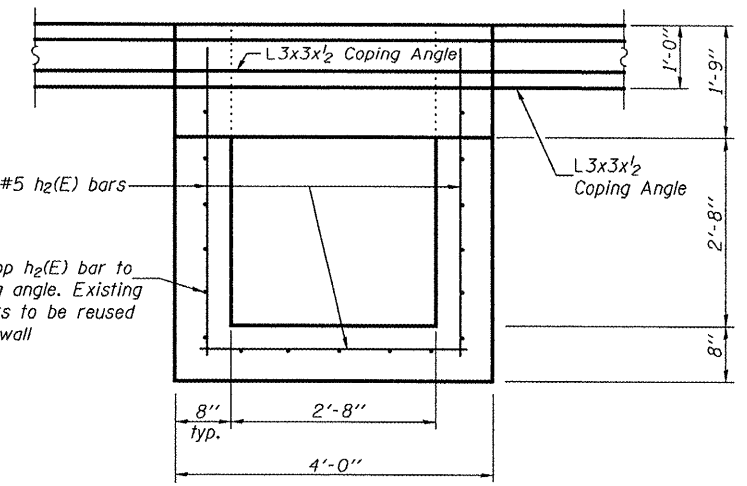
MIN. BAR LAP
#5 Bar = 2'-2"



SECTION B-B
(Coping angles not shown)



SECTION C-C



DETAIL Z-PLAN VIEW AT PIT ENTRANCE
(Proposed manhole frame and lid not shown)

BILL OF MATERIAL

Bar	No.	Size	Length	Shape
h(E)	32	#5	22'-8"	—
h1(E)	4	#5	10'-0"	—
h2(E)	11	#5	3'-9"	—
h3(E)	4	#5	3'-1"	—
h4(E)	8	#5	11'-10"	—
h5(E)	16	#5	6'-0"	L
s(E)	6	#4	5'-8"	□
Reinforcement Bars, Epoxy Coated		Pound	1080	
Concrete Structures		Cu. Yd.	11.6	

Bars indicated thus 4x4-#5 etc. indicates 4 lines of bars with 4 lengths per line.

CONCRETE PIT DETAILS
ROCK ISLAND WEIGH STATION
F.A.I. ROUTE 80 SEC. (81-IWS-2)M-1
ROCK ISLAND COUNTY
STATION 144+00.00

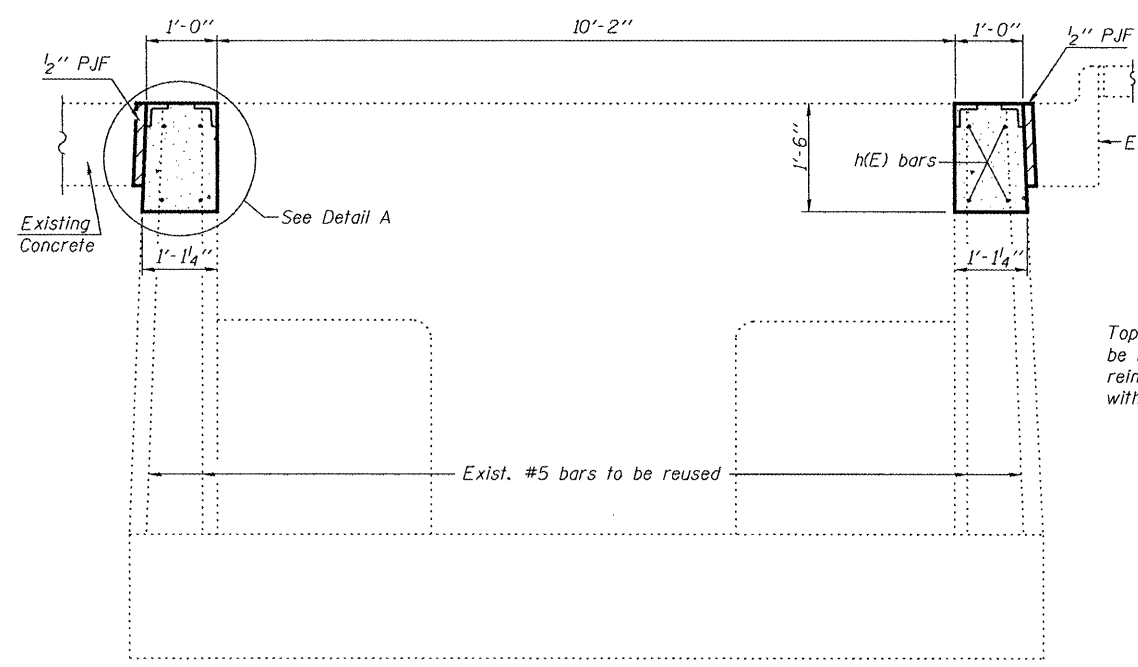
DESIGNED Patrick Petrone
CHECKED Stephen M. Ryan
DRAWN DECKY M. LEACH
CHECKED PMP/SMR

May 7, 2008
EXAMINED Thomas J. Demasak
PASSED Robert E. Quinn
ENGINEER OF BRIDGES AND STRUCTURES

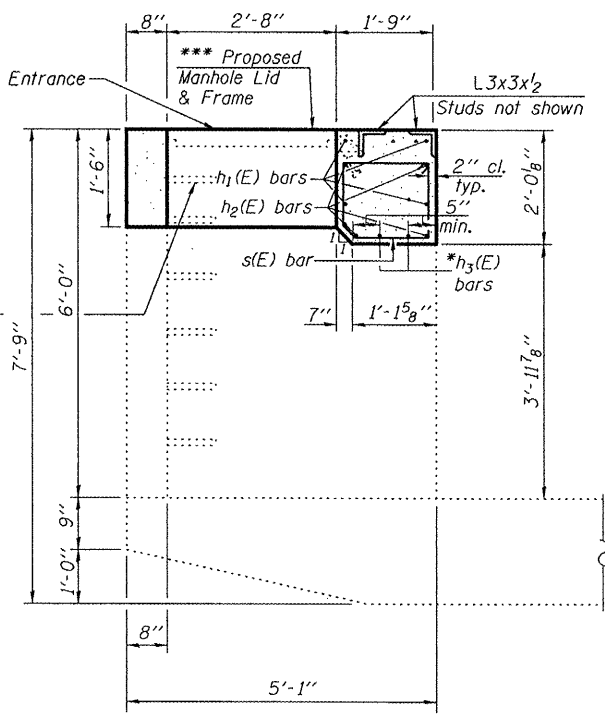
STATE OF ILLINOIS
DEPARTMENT OF TRANSPORTATION

ROUTE NO.	SECTION	COUNTY	SHEET	SHEET	SHEET NO.
FAI 80	*	Rock Island	18	16	5 SHEETS
FED. ROAD DIST. NO. 7	ILLINOIS	FED. AID PROJECT			

Contract #64D93 *(81-IWS-2)M-1



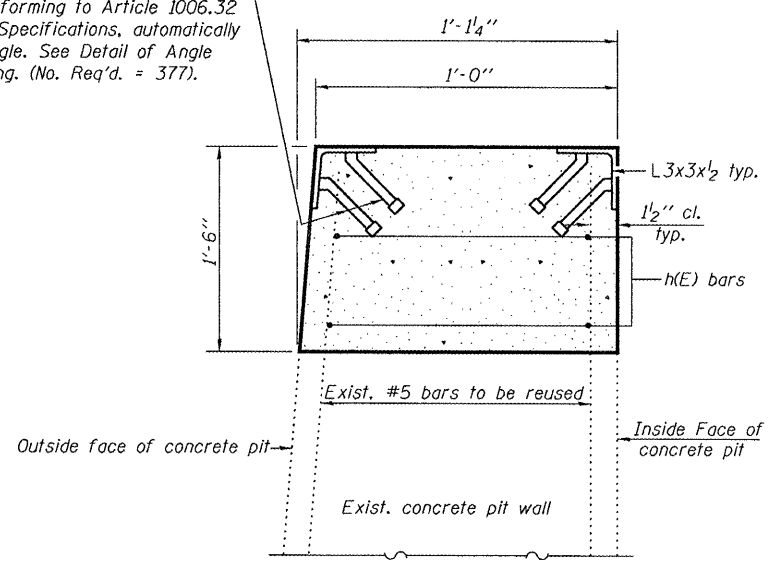
SECTION D-D
(Thru Sidewalls)



SECTION A-A

***For detail of proposed Manhole Lid and Frame, see sheet 1 of 5.

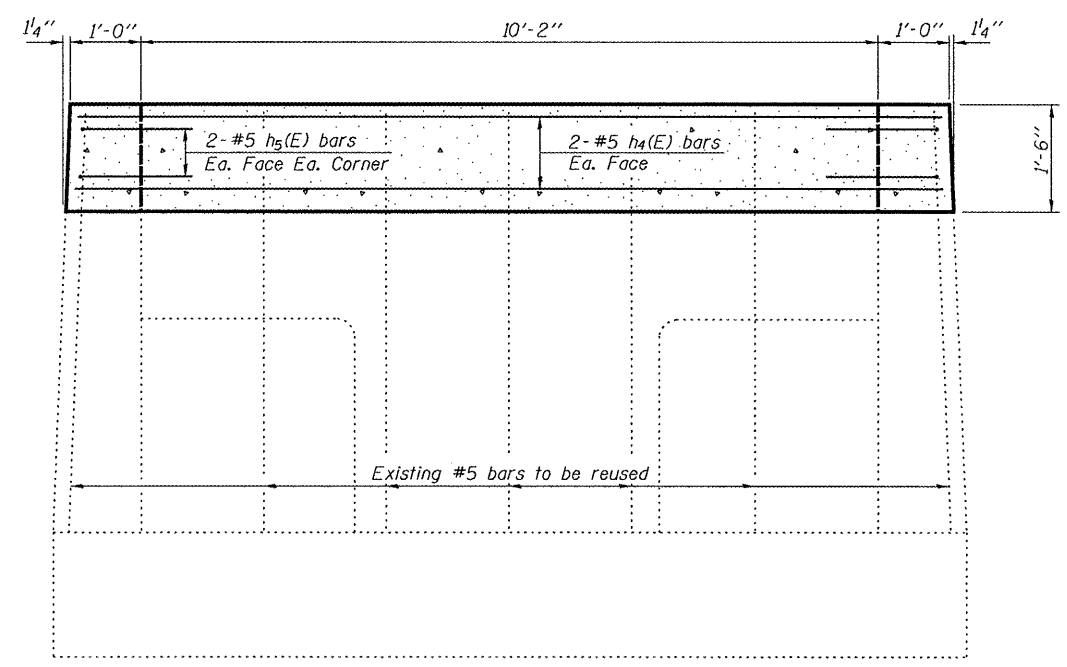
3/4" ϕ x 6" Granular or solid flux filled headed studs conforming to Article 1006.32 of the Standard Specifications, automatically end welded to angle. See Detail of Angle Coping for spacing. (No. Req'd. = 377).



DETAIL A

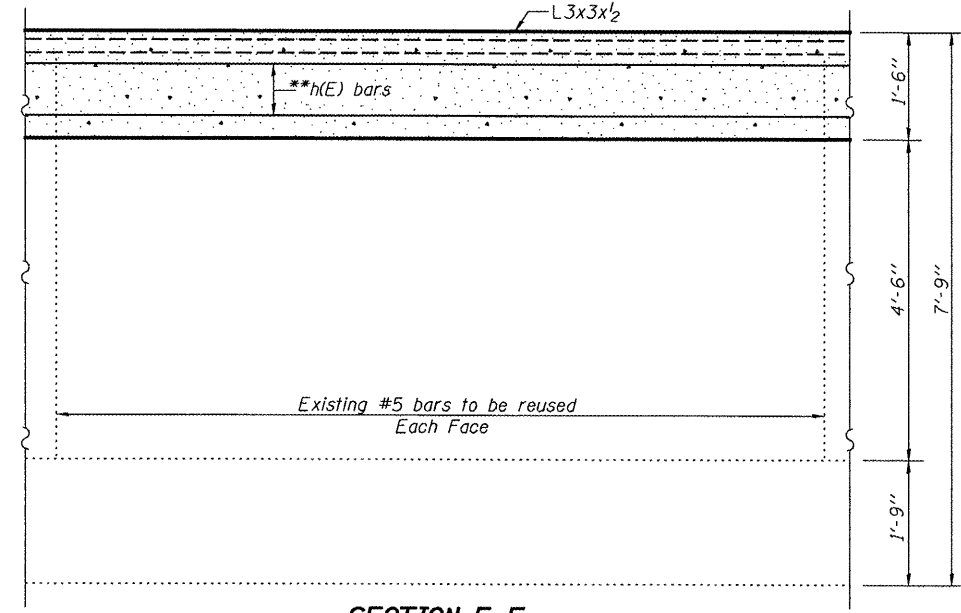
(Side walls shown, End walls similar.)

After welding, angles and studs shall be galvanized according to AASHTO M111. No field painting required. Coping angle and studs paid for as Furnishing and Erecting Structural Steel. (376'-4" length of Angle Coping required) minimum length of coping angles shall be 20' with butted joints.



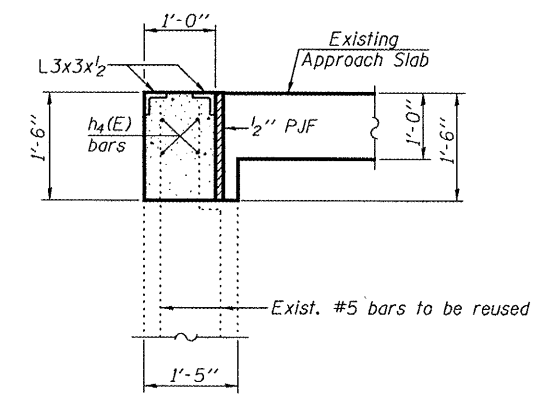
SECTION E-E

(Thru Endwalls)
(Existing concrete outside pit not shown)
(Coping angle L3x3x1/2 and approach slab not shown)



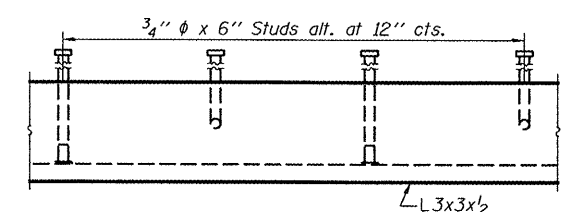
SECTION F-F

(Thru Sidewalls)



SECTION G-G

Showing Approach Slab, Concrete Pit and Coping angles. Concrete Deck, Scale Components, Structural Steel and studs not shown.



DETAIL OF COPING ANGLE

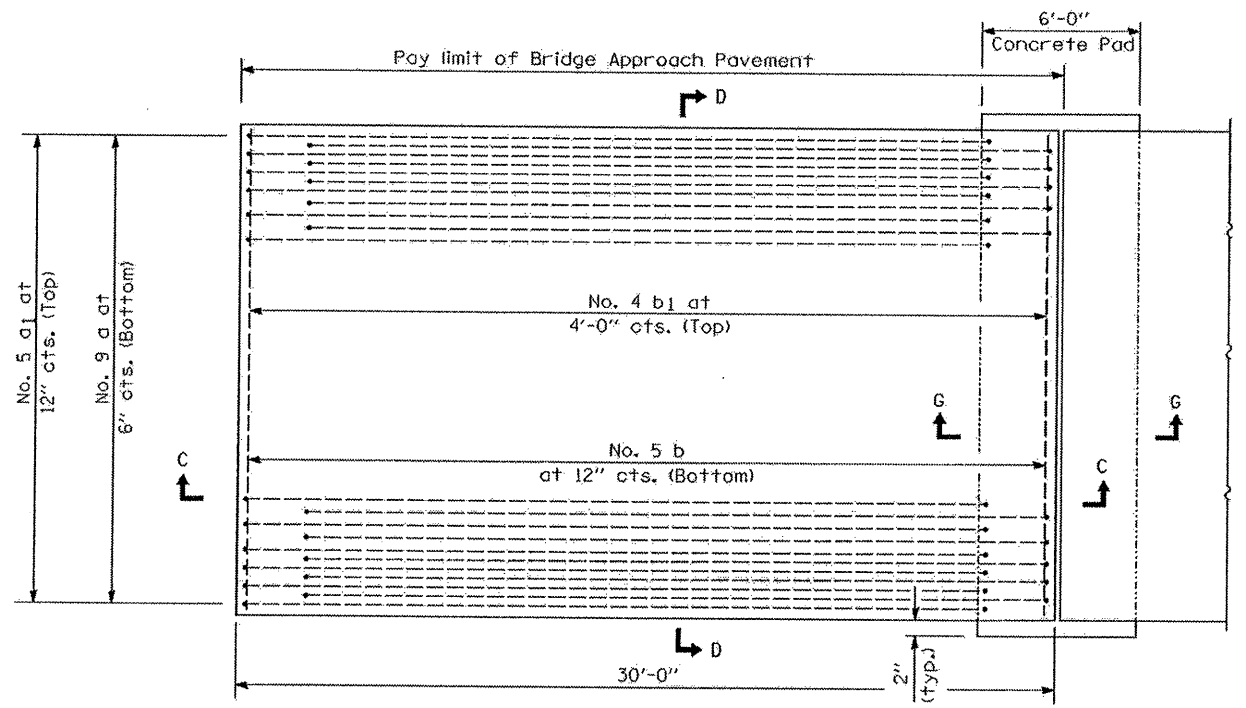
*Epoxy grout h3(E) bars in 9" min. drilled holes according to Section 584 of the Standard Specifications.
**Cut h(E) bar reinforcement in the wall at pit entrance.

DESIGNED	Patrick Petrone
CHECKED	Stephen M. Ryan
DRAWN	DECKY M. LEACH
CHECKED	PMP/SMR

May 7 2008
EXAMINED *Thomas Damgalis*
PASSED *Rafael A. Arduini*
ENGINEER OF BRIDGES AND STRUCTURES

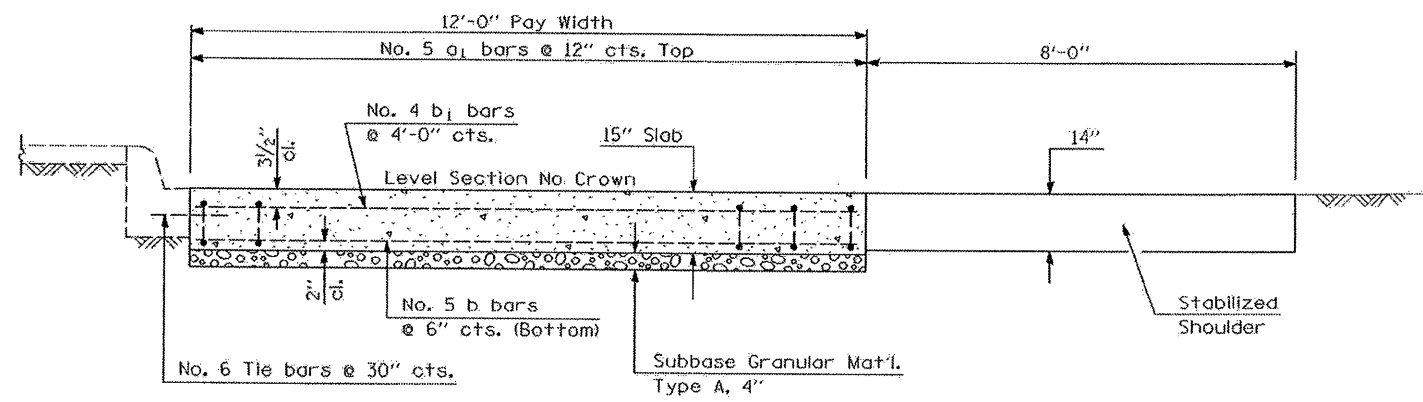
CONCRETE PIT DETAILS
ROCK ISLAND WEIGH STATION
F.A.I. ROUTE 80 SEC. (81-IWS-2)M-1
ROCK ISLAND COUNTY
STATION 144+00.00

F.A.I. RTE.	SECTION	COUNTY	TOTAL SHEETS	SHEET NO.
80	(81-1WS-2)M-1	ROCK ISLAND	16	17



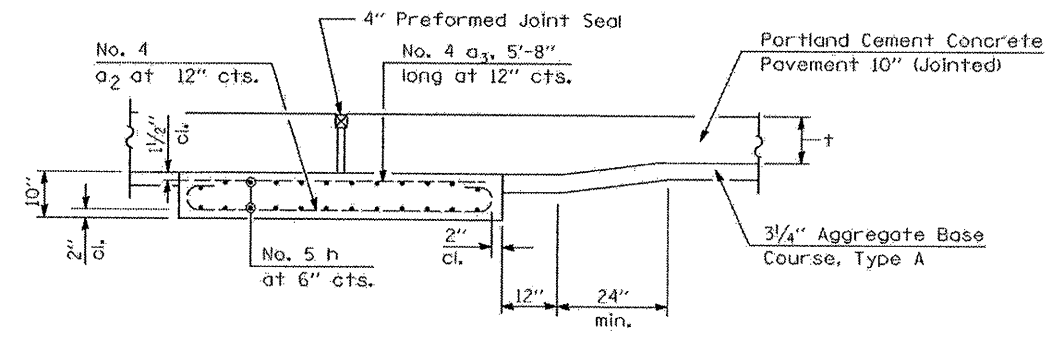
PLAN - WITHOUT SKEW

* Saw \perp or lane edge if poured two or more lane widths at a time.



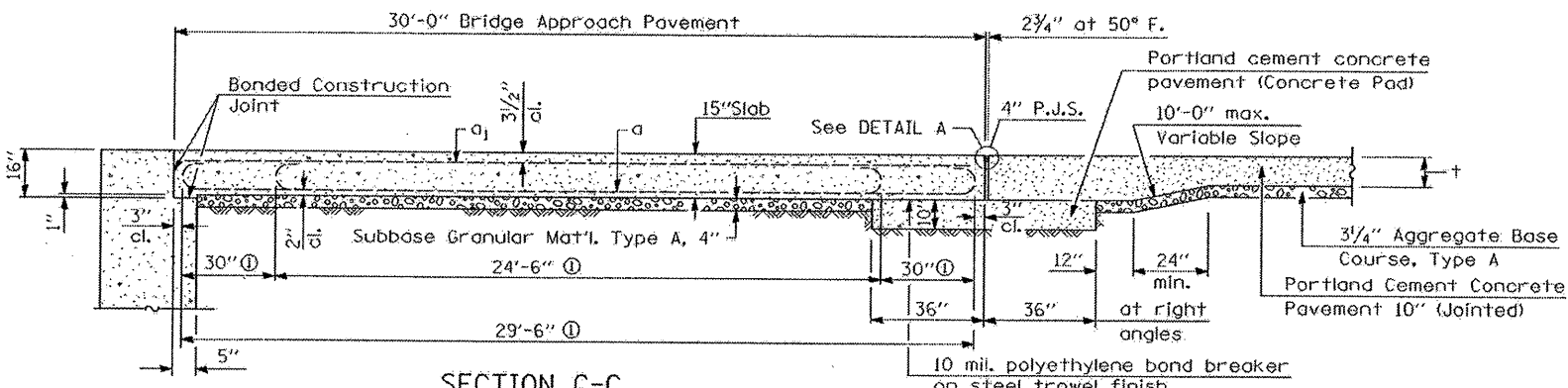
SECTION D-D

(See Plan for Dimensions not shown)
All reinforcement bars shall be epoxy coated.



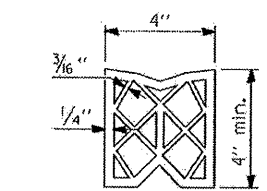
SECTION G-G - RIGID PAVEMENT

(Showing reinforcement)



SECTION C-C

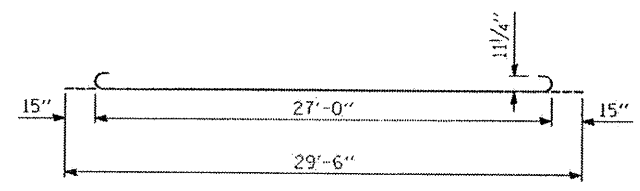
ⓐ Stagger No. 9 a bars as shown on plan - full width



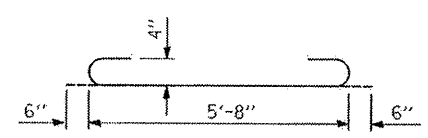
PREFORMED JOINT SEAL

GENERAL NOTES

THICKNESS-"t"=Thickness of Pavement.
See Standard 421001 for reinforcement details not shown.
See Standard 420001 for joint details not shown.



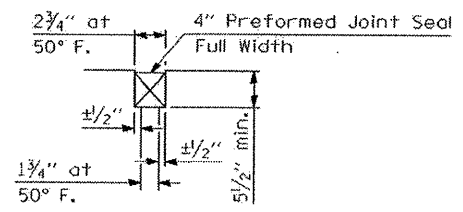
BAR a



BAR a2

DESIGN STRESSES

$f_y = 60,000$ p.s.i.
 $f'_c = 3,500$ p.s.i.
 $n = 8.5$

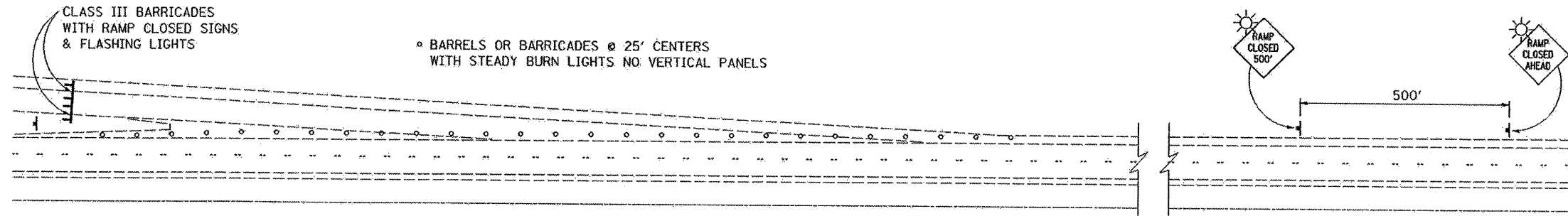


DETAIL A

ILLINOIS DEPARTMENT OF TRANSPORTATION
BRIDGE APPROACH PAVEMENT SPECIAL
F.A.I. 80 (I-80)
SECTION (81-1WS-2)M-1
ROCK ISLAND COUNTY
SCALE: N/A
DATE: 12-08-07
DRAWN BY: CADD
CHECKED BY:

PLOT DATE = Wed Mar 12 13:02:09 2008
 PLOT SCALE = 1/8"=1'-0"
 USER NAME = d1212r10

F.A.I. RTE.	SECTION	COUNTY	TOTAL SHEETS	SHEET NO.
80	(81-IWS-2)M-1	ROCK ISLAND	18	18



◦ BARRELS OR BARRICADES @ 25' CENTERS WITH STEADY BURN LIGHTS NO VERTICAL PANELS

TYPICAL APPLICATION OF TRAFFIC CONTROL DEVICES FOR ROAD CLOSURE FOR WEIGH STATION ENTRANCE RAMP

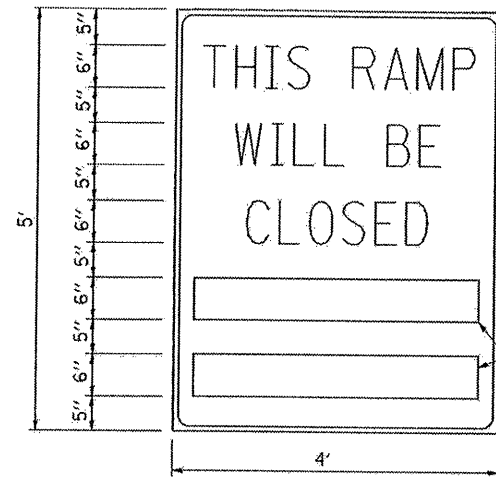
GENERAL NOTES:

THE FOLLOWING SIGNS WILL NOT BE NEEDED AS PART OF THIS SET-UP OF TRAFFIC CONTROL AND PROTECTION (SPECIAL):

- 1 - WORK ZONE SPEED LIMIT SIGNS
- 2 - CONSTRUCTION SPEED LIMIT SIGNS
- 3 - END WORK ZONE SPEED LIMIT SIGNS

CONTACT THE DISTRICT TRAFFIC OPERATIONS ENGINEER AT 815-284-5474, ONE WEEK PRIOR TO CLOSING THE RAMP.

CONTACT OPERATIONS LIEUTENANT, DARIN JOHNSON, AT 309-752-4915, TWO WEEKS PRIOR TO CLOSING THE RAMP.



BLACK LEGEND ON WHITE REFLECTORIZED BACKGROUND

1/2" BORDER

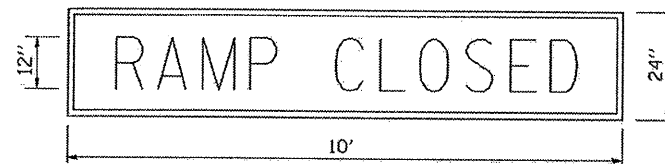
THESE BLANK AREAS SHALL BE FILLED WITH THE DATES AND THE TIME THAT THE RAMP WILL BE CLOSED.

GENERAL NOTES:

- 1. CONES MAY BE SUBSTITUTED FOR DRUMS OR TYPE II BARRICADES DURING DAY OPERATIONS. CONES SHALL BE A MINIMUM OF 28 INCHES HIGH.
- 2. STEADY BURN LIGHTS WILL NOT BE REQUIRED FOR DAY OPERATIONS.
- 3. A FLAGGER SHALL BE POSITIONED AT EACH CLOSED RAMP THAT IS OPEN TO CONSTRUCTION VEHICLES.
- 4. ALL ROUTE MARKERS AND TRAILBLAZER ASSEMBLIES WHICH DIRECT MOTORISTS TO A CLOSED ENTRANCE RAMP SHALL BE COVERED.
- 5. THE SIGNING AND BARRICADING WHICH IS REQUIRED BY THIS DETAIL SHALL BE CONSIDERED INCLUDED IN THE CONTRACT AND NO COMPENSATION SHALL BE ALLOWED.
- 6. THE RAMP CLOSURE ADVANCE INFORMATION SIGNS SHALL BE ERECTED IF THE CLOSURE TIME EXCEEDS TWENTY FOUR (24) HOURS.
- 7. ADDITIONAL ADVANCE WARNING SIGNS ON EXIT GUIDE SIGNING WILL BE REQUIRED FOR EXIT RAMP CLOSURES THAT EXCEED TWENTY FOUR (24) HOURS IN LENGTH.

THESE SIGNS ARE REQUIRED ON BOTH SIDES OF THE RAMP, A MINIMUM OF 1 WEEK IN ADVANCE OF THE CLOSURE.

RAMP CLOSURE ADVANCE INFORMATION SIGN

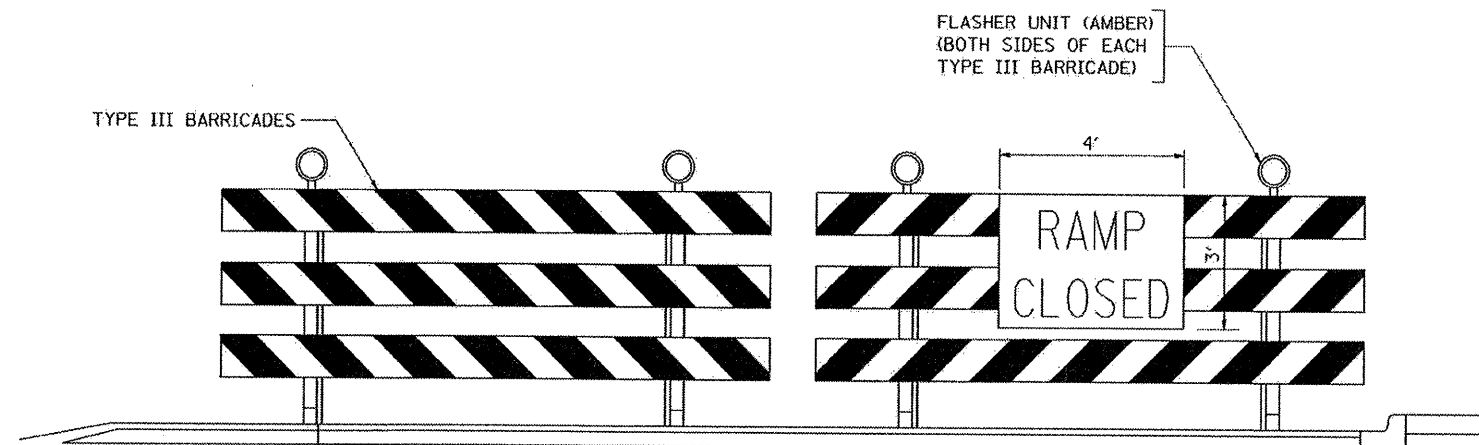


BLACK LEGEND ON ORANGE REFLECTORIZED BACKGROUND

1" BORDER

THESE SIGNS ARE REQUIRED ON ALL THE EXIT GUIDE SIGNS FOR THE CLOSED EXIT RAMP AT A DIAGONAL.

RAMP CLOSURE ADVANCE WARNING SIGN



DETAIL FOR REQUIRED BARRICADES & SIGNS

ILLINOIS DEPARTMENT OF TRANSPORTATION
**WEIGH STATION
 RAMP CLOSURE DETAIL**
 F.A.I. 80 (I-80)
 SECTION (81-IWS-2)M-1
 ROCK ISLAND COUNTY

SCALE: NOT TO SCALE
 DATE: 11-28-06
 DRAWN BY: CADD
 CHECKED BY: