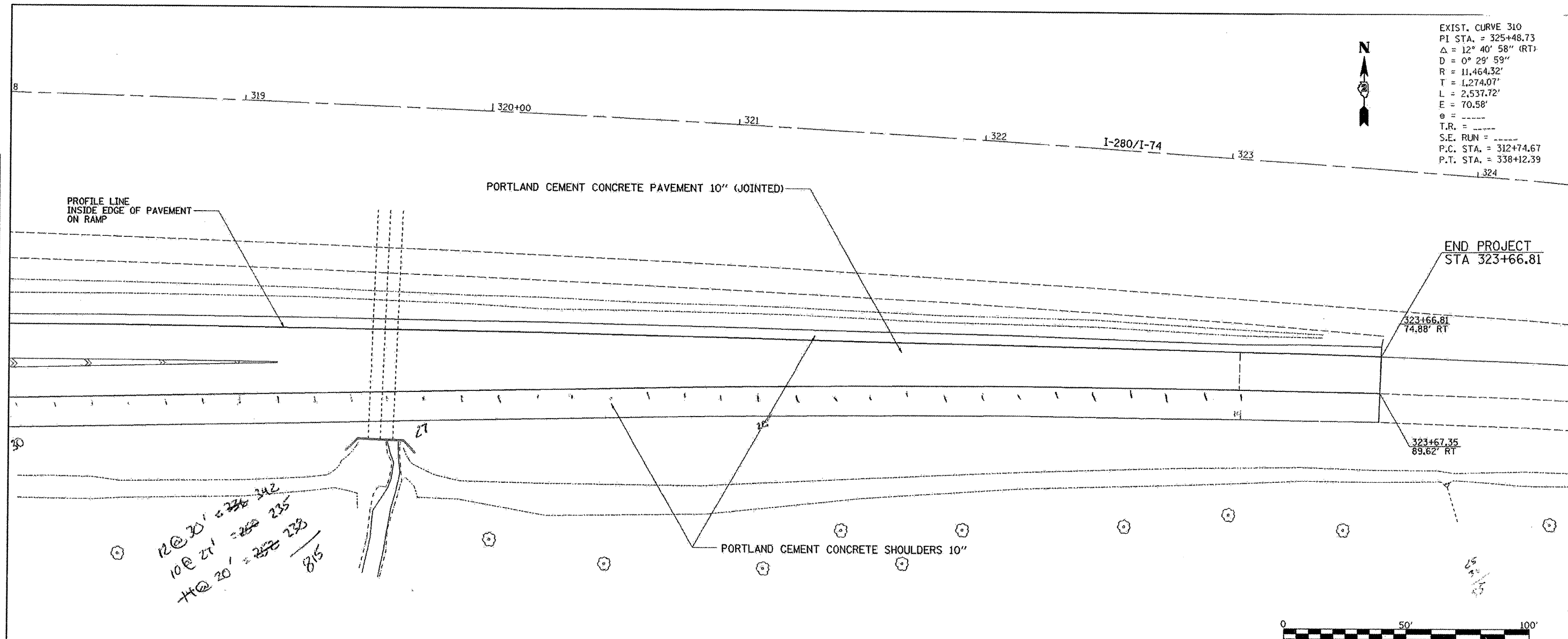


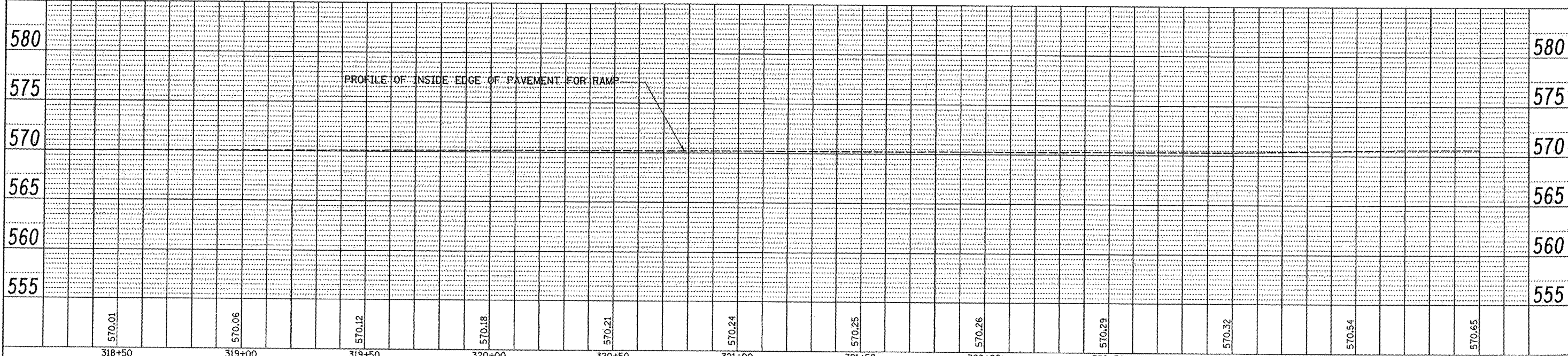
DATE	
BY	
PLANNED	
DESIGNED	
CHECKED	
NOTED	
FILE NAME	

DATE	
BY	
PLANNED	
DESIGNED	
CHECKED	
NOTED	
FILE NAME	

EXIST. CURVE 310
 PI STA. = 325+48.73
 $\Delta = 12^\circ 40' 58''$ (RT)
 $D = 0^\circ 29' 59''$
 $R = 11,464.32'$
 $T = 1,274.07'$
 $L = 2,537.72'$
 $E = 70.58'$
 $\theta = \dots$
 $T.R. = \dots$
 $S.E. RUN = \dots$
 $P.C. STA. = 312+74.67$
 $P.T. STA. = 338+12.39$



Handwritten notes:
 12 @ 20' = 240 342
 10 @ 21' = 210 235
 4 @ 20' = 80 233
 85



FILE NAME = c:\projects\p203006\p203006shs.dgn	USER NAME = dtisle.sp	DESIGNED -	REVISED -	STATE OF ILLINOIS DEPARTMENT OF TRANSPORTATION	PROPOSED IMPROVEMENTS	F.A.I. RTE. 74	SECTION 081-3WSIM-1	COUNTY ROCK ISLAND	SHEETS 9	NO. 9
PLOT SCALE = 20.0000" = 1'	PLOT DATE = Mon Feb 04 10:04:36 2008	CHECKED -	REVISED -	SCALE:	SHEET NO. OF SHEETS STA. TO STA.	FED. ROAD DIST. NO.	ILLINOIS FED. AID PROJECT	CONTRACT NO. 64D94		