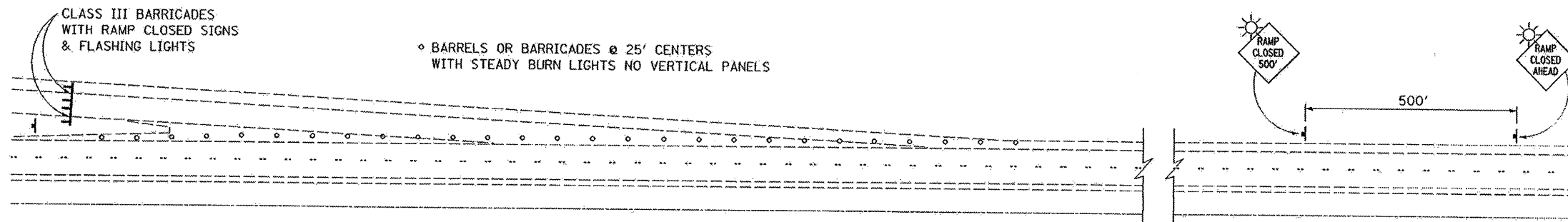


F.A.I. RTE.	SECTION	COUNTY	TOTAL SHEETS	SHEET NO.
74	(81-3WSM-1	ROCK ISLAND	--	16



◊ BARRELS OR BARRICADES @ 25' CENTERS WITH STEADY BURN LIGHTS NO VERTICAL PANELS

GENERAL NOTES:

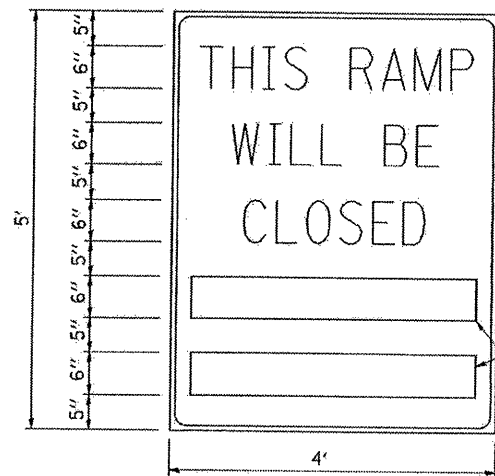
THE FOLLOWING SIGNS WILL NOT BE NEEDED AS PART OF THIS SET-UP OF TRAFFIC CONTROL AND PROTECTION (SPECIAL):

- 1 - WORK ZONE SPEED LIMIT SIGNS
- 2 - CONSTRUCTION SPEED LIMIT SIGNS
- 3 - END WORK ZONE SPEED LIMIT SIGNS

CONTACT THE DISTRICT TRAFFIC OPERATIONS ENGINEER AT 815-284-5474, ONE WEEK PRIOR TO CLOSING THE RAMP.

CONTACT OPERATIONS LIEUTENANT, DARIN JOHNSON, AT 309-752-4915, TWO WEEKS PRIOR TO CLOSING THE RAMP.

TYPICAL APPLICATION OF TRAFFIC CONTROL DEVICES FOR ROAD CLOSURE FOR WEIGH STATION ENTRANCE RAMP



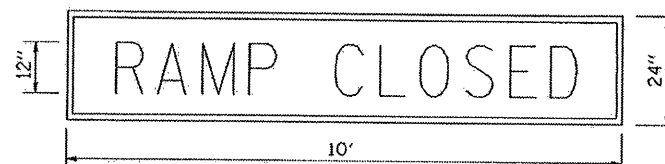
BLACK LEGEND ON WHITE REFLECTORIZED BACKGROUND

1/2" BORDER

THESE BLANK AREAS SHALL BE FILLED WITH THE DATES AND THE TIME THAT THE RAMP WILL BE CLOSED.

THESE SIGNS ARE REQUIRED ON BOTH SIDES OF THE RAMP, A MINIMUM OF 1 WEEK IN ADVANCE OF THE CLOSURE.

RAMP CLOSURE ADVANCE INFORMATION SIGN



BLACK LEGEND ON ORANGE REFLECTORIZED BACKGROUND

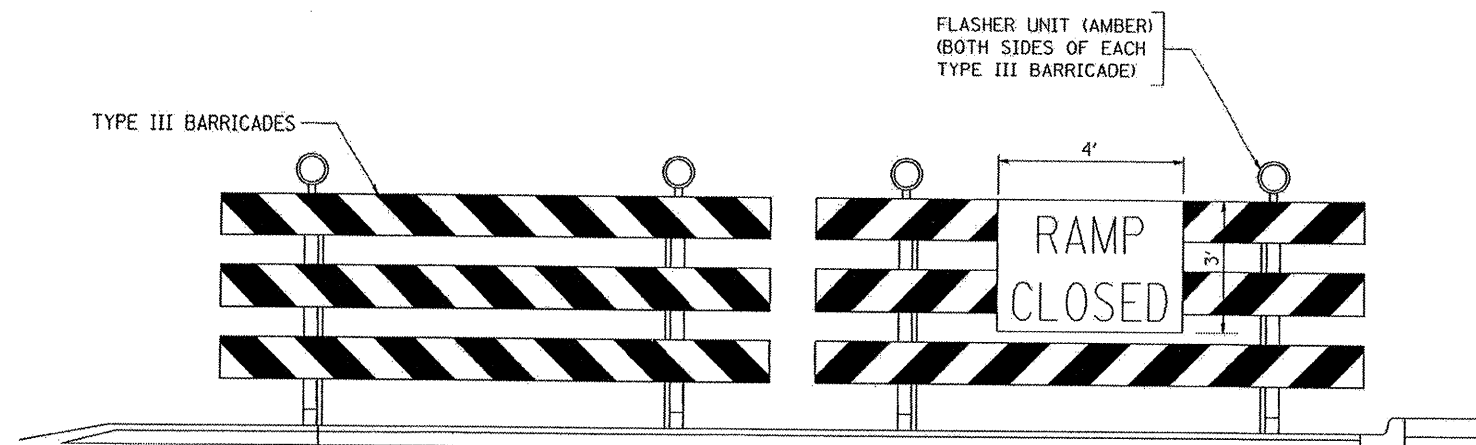
1" BORDER

THESE SIGNS ARE REQUIRED ON ALL THE EXIT GUIDE SIGNS FOR THE CLOSED EXIT RAMPS AT A DIAGONAL.

RAMP CLOSURE ADVANCE WARNING SIGN

GENERAL NOTES:

1. CONES MAY BE SUBSTITUTED FOR DRUMS OR TYPE II BARRICADES DURING DAY OPERATIONS. CONES SHALL BE A MINIMUM OF 28 INCHES HIGH.
2. STEADY BURN LIGHTS WILL NOT BE REQUIRED FOR DAY OPERATIONS.
3. A FLAGGER SHALL BE POSITIONED AT EACH CLOSED RAMP THAT IS OPEN TO CONSTRUCTION VEHICLES.
4. ALL ROUTE MARKERS AND TRAILBLAZER ASSEMBLIES WHICH DIRECT MOTORISTS TO A CLOSED ENTRANCE RAMP SHALL BE COVERED.
5. THE SIGNING AND BARRICADING WHICH IS REQUIRED BY THIS DETAIL SHALL BE CONSIDERED INCLUDED IN THE CONTRACT AND NO COMPENSATION SHALL BE ALLOWED.
6. THE RAMP CLOSURE ADVANCE INFORMATION SIGNS SHALL BE ERECTED IF THE CLOSURE TIME EXCEEDS TWENTY FOUR (24) HOURS.
7. ADDITIONAL ADVANCE WARNING SIGNS ON EXIT GUIDE SIGNING WILL BE REQUIRED FOR EXIT RAMP CLOSURES THAT EXCEED TWENTY FOUR (24) HOURS IN LENGTH.



DETAIL FOR REQUIRED BARRICADES & SIGNS

ILLINOIS DEPARTMENT OF TRANSPORTATION
WEIGH STATION
RAMP CLOSURE DETAIL
 F.A.I. 74/280 (I-74/I-280)
 SECTION (81-3WSM-1)
 ROCK ISLAND COUNTY
 SCALE: NOT TO SCALE
 DATE: 11-28-06
 DRAWN BY: CADD
 CHECKED BY:

PLOT DATE = Wed Feb 27 14:04:21 2008
 PLOT SCALE = 1/8"=1'-0"
 USER NAME = cadd