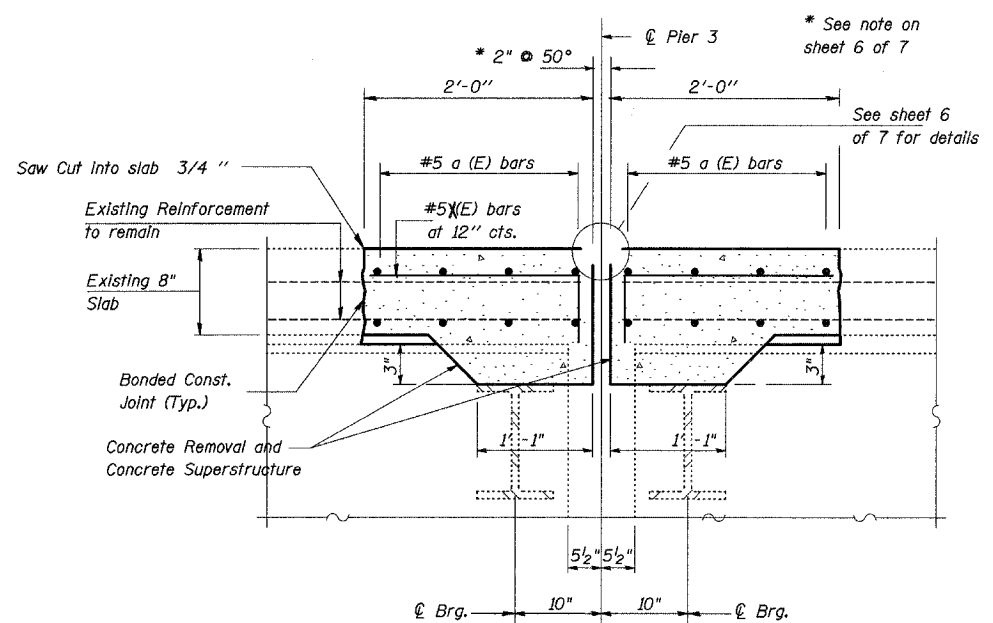


Note: Existing reinforcement to remain should be cleaned and incorporated into new construction.

SECTION THRU JOINT
(At Abutments)



SECTION THRU JOINT
(At Pier 3)

Bill of Material

BAR	NO.	SIZE	LENGTH	SHAPE
a (E)	32	5	21' - 9"	—
a ₁ (E)	32	5	22' - 3"	—
d (E)	24	4	5' - 3"	J
d ₁ (E)	24	5	3' - 11"	J
h (E)	6	6	22' - 9"	—
h ₁ (E)	6	6	23' - 3"	—
x (E)	180	5	2' - 7"	—
CONCRETE SUPERSTRUCTURE			CU YD	18.0
CONCRETE REMOVAL			CU YD	18.0
REINFORCEMENT BARS, EPOXY COATED			POUND	2,550
PREFORMED JOINT STRIP SEAL			FOOT	135
BAR SPLICERS			EACH	38
REM REIN T B TERM T1			EACH	4

JOINT DETAILS
IL 84 OVER PLUM RIVER
FA ROUTE 18 (IL 84)
SECTION 106BR
CARROLL COUNTY
STRUCTURE NUMBER 008-0028

* Various
** (106BR)M, (4B-2)M & 177-4B-3)M