

Illinois Route 26 bridge over Buffalo Creek.
 Existing structure number is 071-0069.
 Remove and reconstruct two expansion joints
 One joint at each abutment.

General Notes

Reinforcement bars shall conform to the requirements of ASTM A 706 Gr 60 (IL Modified). See Special Provisions.

Reinforcement bars designated (E) shall be epoxy coated.

Prior to pouring the new concrete deck, all heavy or loose rust, loose mill scale, and other loose or potentially detrimental foreign material shall be removed from the surfaces in contact with concrete. Tightly adhered paint may remain unless otherwise noted. Removal shall be accomplished by methods that will not damage the steel and the cost will be included in the pay item covering removal of the existing concrete.

Plan dimensions and details relative to existing plans are subject to routine variations. The Contractor shall field verify existing dimensions and details affecting new construction and make necessary approved adjustments prior to construction or ordering of materials. Such variations shall not be cause for additional compensation for a change in scope of the work, however, the Contractor will be paid for the quantity actually furnished based upon the unit price bid for the work.

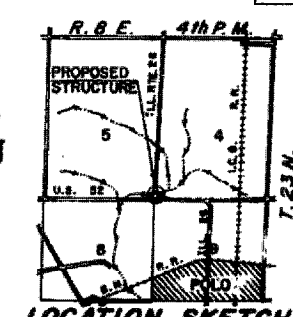
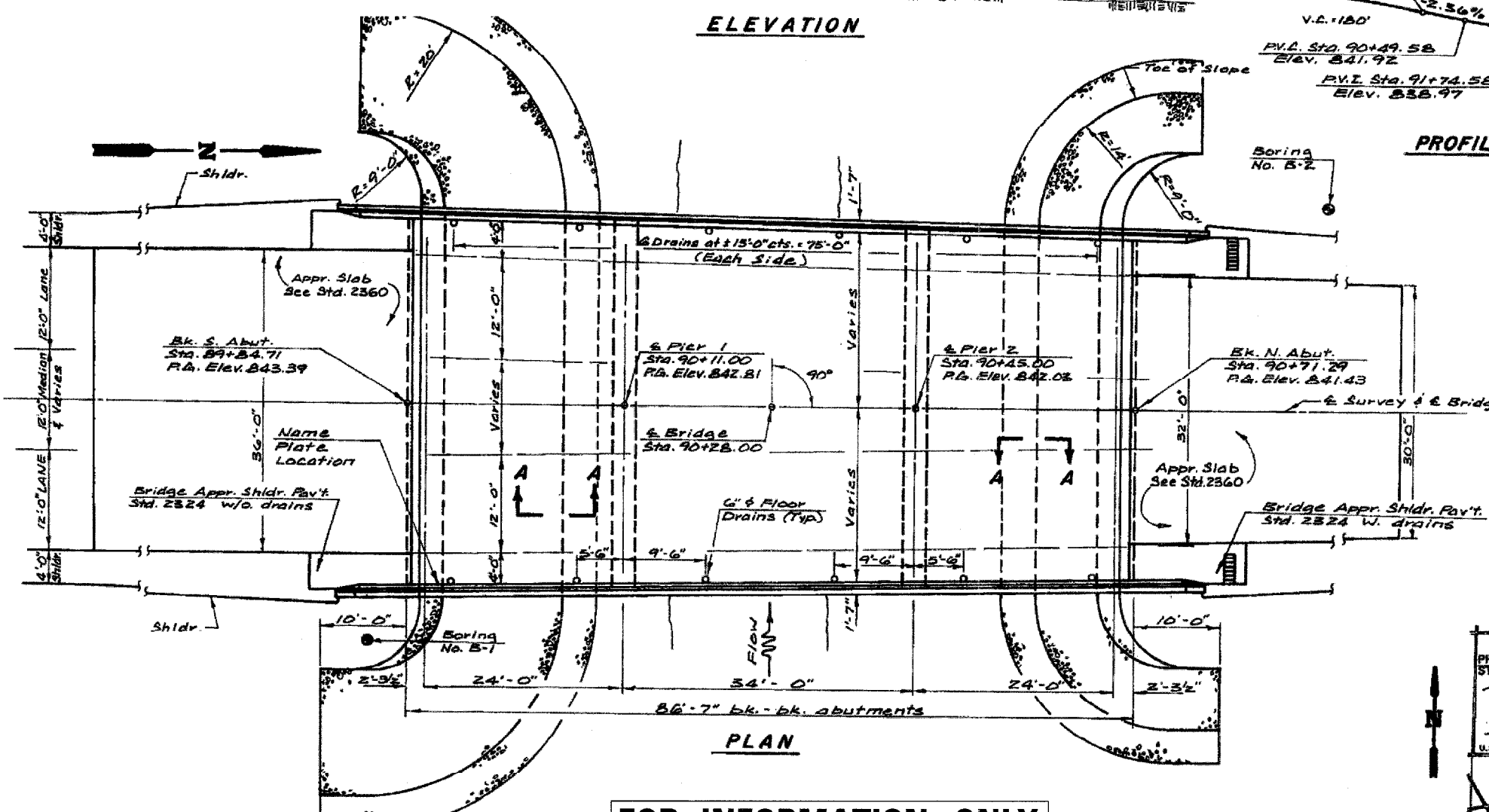
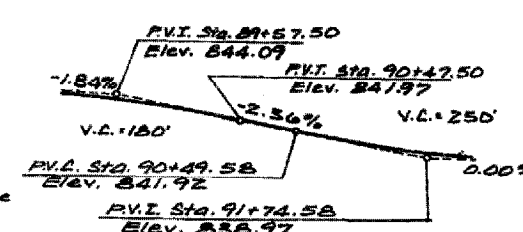
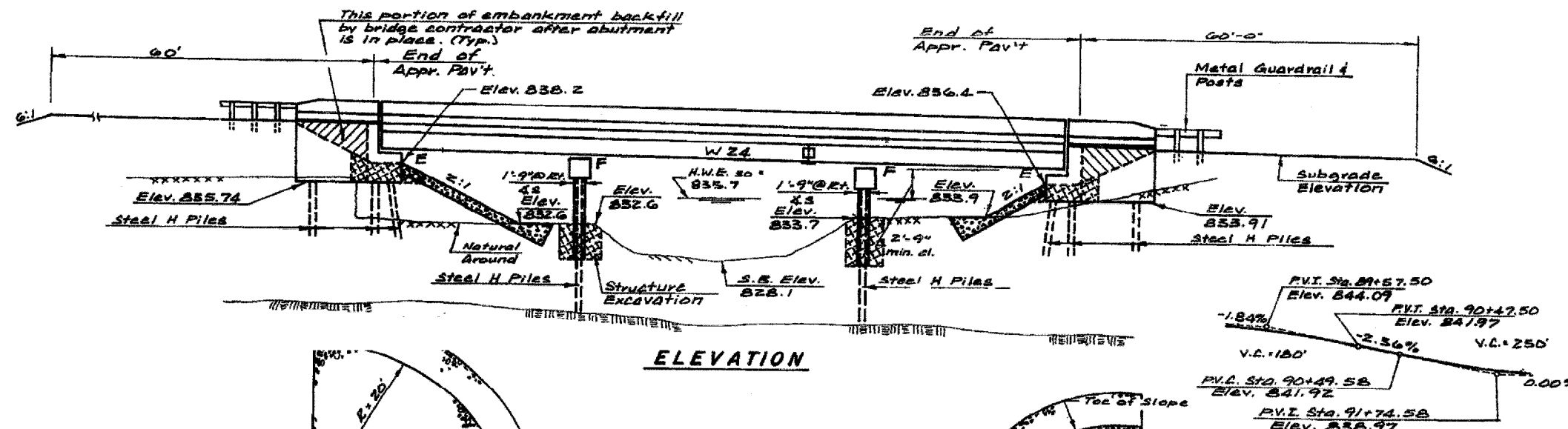
The existing structural steel coating contains lead. The Contractor shall take appropriate precautions to deal with the presence of lead on this project.

Existing reinforcement bars extending into the removal area shall be cleaned, straightened and incorporated into the new construction. Any reinforcement bars that are damaged during concrete removal shall be replaced with an approved bar splicer or anchorage system. Cost included with Concrete Removal.

Joint openings shall be adjusted according to Article 520.04 of the Standard Specifications when the deck is poured at an ambient temperature other than 50° F.

TOTAL BILL OF MATERIAL

ITEM	UNIT	SUPER	SUB	TOTAL
CONCRETE SUPERSTRUCTURE	CU YD	12.0		12.0
CONCRETE REMOVAL	CU YD	12.0		12.0
REINFORCEMENT BARS, EPOXY COATED	POUND			1520
PREFORMED JOINT STRIP SEAL	FOOT	90		90
BAR SPLICERS	EACH	22		22
REM REIN T B TERM T1	EACH	4		4



GENERAL PLAN & ELEVATION
 IL 26 OVER BUFFALO CREEK
 FA ROUTE 38 (IL 26)
 SECTION 4B-2
 OGLE COUNTY
 STRUCTURE NUMBER 071-0069

FOR INFORMATION ONLY