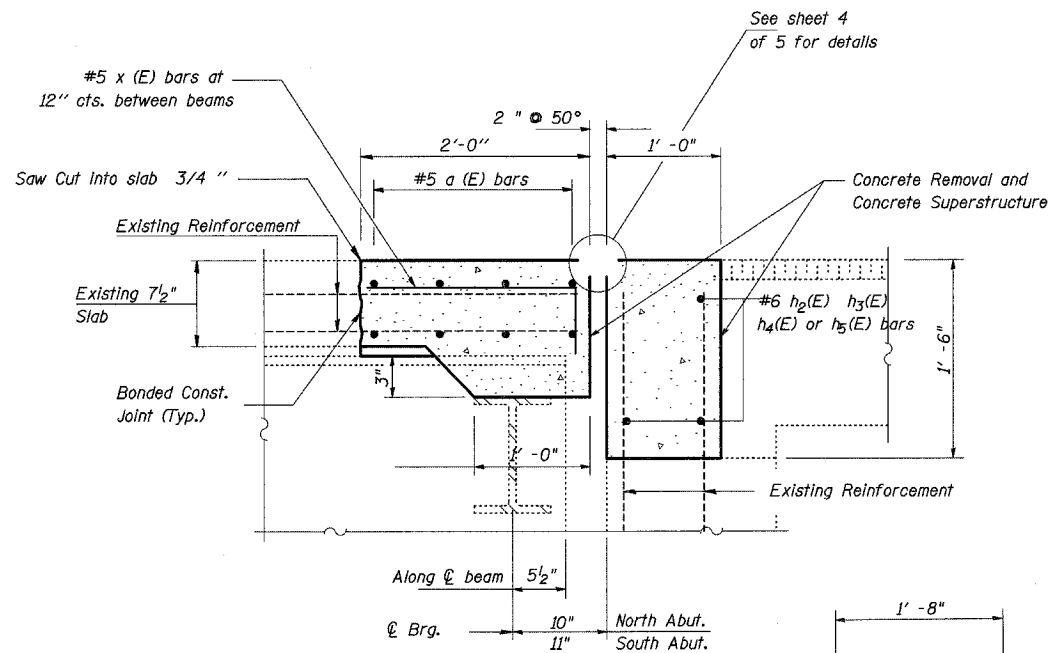
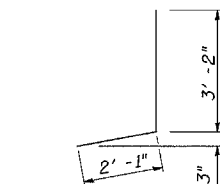


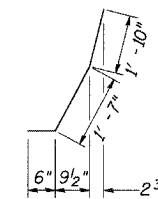
**EXISTING PARTIAL PLAN**  
(South Abutment Shown)



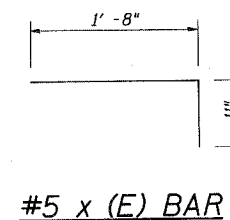
**SECTION THRU JOINT**  
(At Abutments)



**#4 d (E) BAR**



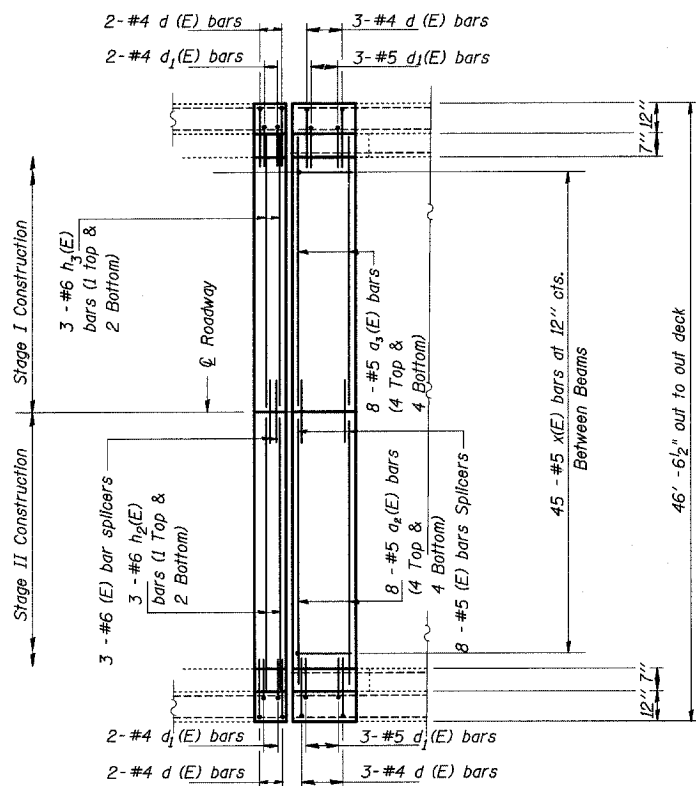
**#5 d<sub>1</sub> (E) BAR**



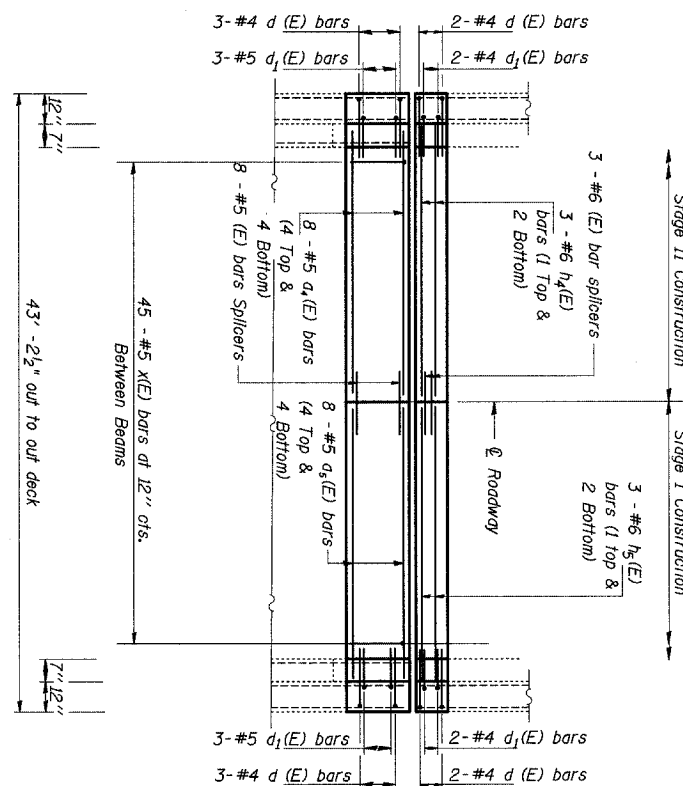
**#5 x (E) BAR**

**Bill of Material**

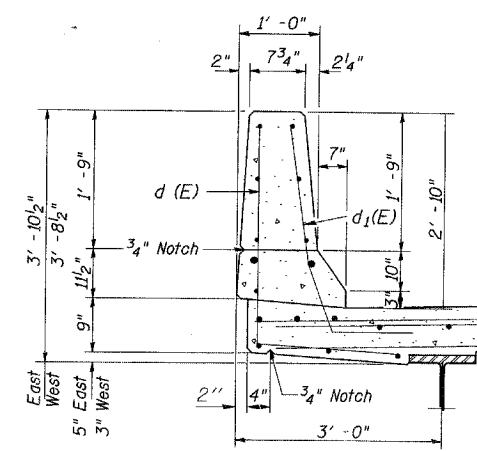
BAR	NO.	SIZE	LENGTH	SHAPE
a <sub>2</sub> (E)	8	5	23' - 0"	—
a <sub>3</sub> (E)	8	5	23' - 4"	—
a <sub>4</sub> (E)	8	5	22' - 0"	—
a <sub>5</sub> (E)	8	5	22' - 4"	—
d (E)	20	4	5' - 3"	J
d <sub>1</sub> (E)	20	5	3' - 11"	J
h <sub>2</sub> (E)	3	6	21' - 2"	—
h <sub>3</sub> (E)	3	6	21' - 6"	—
h <sub>4</sub> (E)	3	6	19' - 5"	—
h <sub>5</sub> (E)	3	6	18' - 10"	—
x (E)	90	5	2' - 7"	—
CONCRETE SUPERSTRUCTURE			CU YD	12.0
CONCRETE REMOVAL			CU YD	12.0
REINFORCEMENT BARS, EPOXY COATED			POUND	1,520
PREFORMED JOINT STRIP SEAL			FOOT	90
BAR SPLICERS			EACH	22
REM REIN T B TERM T1			EACH	4



**PROPOSED PARTIAL PLAN**  
(At South Abutment)



**PROPOSED PARTIAL PLAN**  
(At North Abutment)



**TYPICAL SECTION THRU PARAPET**

• = Existing Reinforcement

**JOINT DETAILS**  
IL 26 OVER BUFFALO CREEK  
FA ROUTE 38 (IL 26)  
SECTION 4B-2  
OGLE COUNTY  
STRUCTURE NUMBER 071-0069

\* Various  
\*\* (106BR)M, (4B-2)M & 177-4B-3)M

FILE NAME =	USER NAME = lunkdj	DESIGNED -	REVISED -	<b>STATE OF ILLINOIS DEPARTMENT OF TRANSPORTATION</b>	<b>Joint Details</b>		F.A. RTE.	SECTION	COUNTY	TOTAL SHEETS	SHEET NO.
D:\BR\CADD plans\Various Counties\Contract #64099 2008 expansion joints\0080028.dgn		DRAWN -	REVISED -		SCALE: None	SHEET NO. 3 OF 5 SHEETS	STA.	TO STA.	Various	26	19
PLOT SCALE = 50.0000' / IN.		CHECKED -	REVISED -						ILLINOIS	CONTRACT NO. 64099	
PLOT DATE = Sat Mar 15 11:13:08 2008		DATE -	REVISED -						FED. ROAD DIST. NO.	ILLINOIS FED. AID PROJECT	