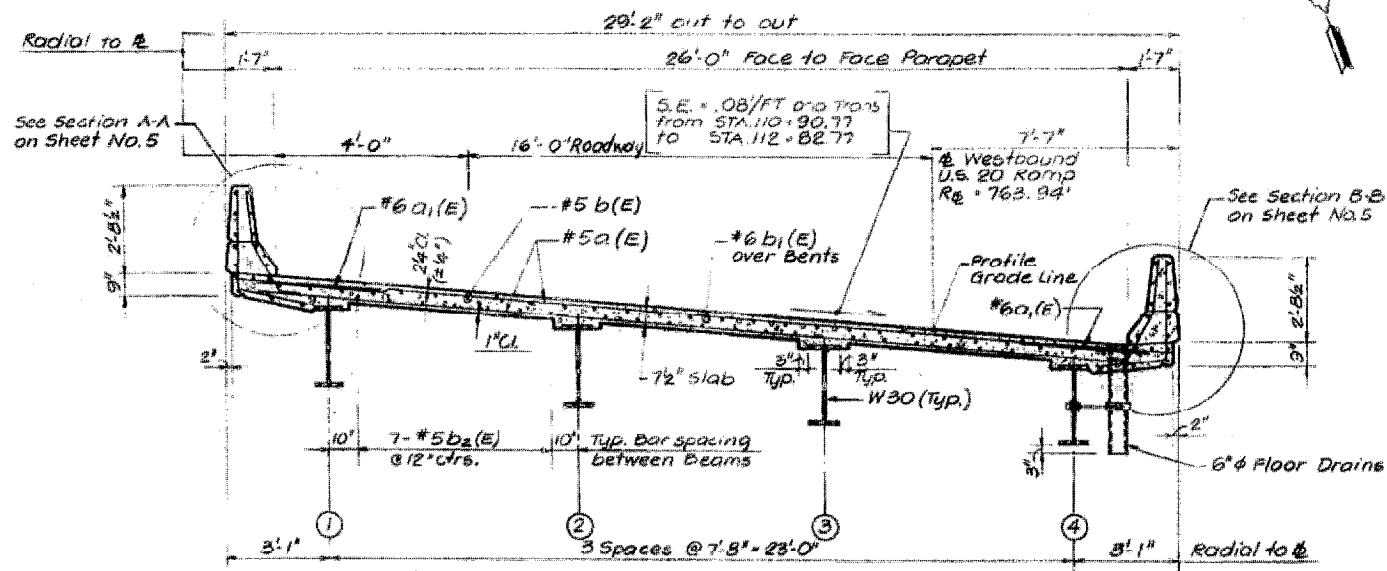


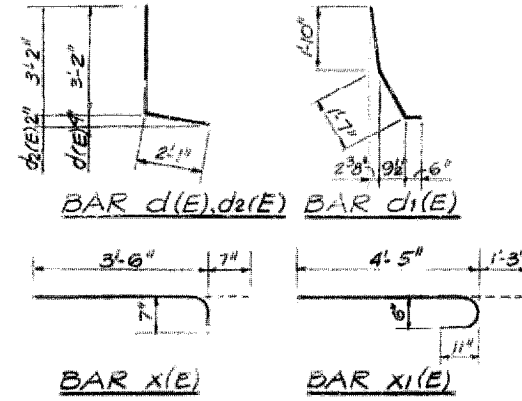
Dors indicated Thus 27-4-#5 etc. Indicates 27 Lines of Bars with 4 Lengths per Line

**DECK PLAN**

Min Lop #5 Bars - 2'-2"



**CROSS SECTION (LOOKING WEST)**



**DECK PLAN & CROSS-SECTION  
US 20 WB RAMP OVER SILVER CREEK  
FA 401 (US 20)  
SECTION 177-4B-3  
STEPHENSON COUNTY  
STRUCTURE NUMBER 089-0060**

**FOR INFORMATION ONLY**

\* Various  
\*\* (106BR)M, (4B-2)M & 177-4B-3JM

FILE NAME =	USER NAME = inkdj	DESIGNED -	REVISED -	<b>STATE OF ILLINOIS DEPARTMENT OF TRANSPORTATION</b>	<b>Existing Deck Plan &amp; Cross Section</b>		F.A. RTE.	SECTION	COUNTY	TOTAL SHEETS	SHEET NO.	
C:\BR\CADD\plans\Various Counties\Contract #64099 2008 expansion joints\0890028.dgn		DRAWN -	REVISED -				SCALE: None	SHEET NO. 1 OF 5 SHEETS	STA.	TO STA.	ILLINOIS	Various
PLOT SCALE = 50.0000' / IN.		CHECKED -	REVISED -						CONTRACT NO. 64099			
PLOT DATE = Sat Mar 15 11:31:19 2008		DATE -	REVISED -						FED. ROAD DIST. NO.	ILLINOIS FED. AID PROJECT		