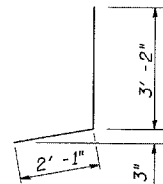
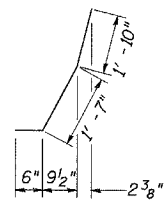


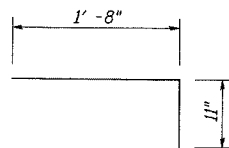
EXISTING PARTIAL PLAN
(At West Abutment)



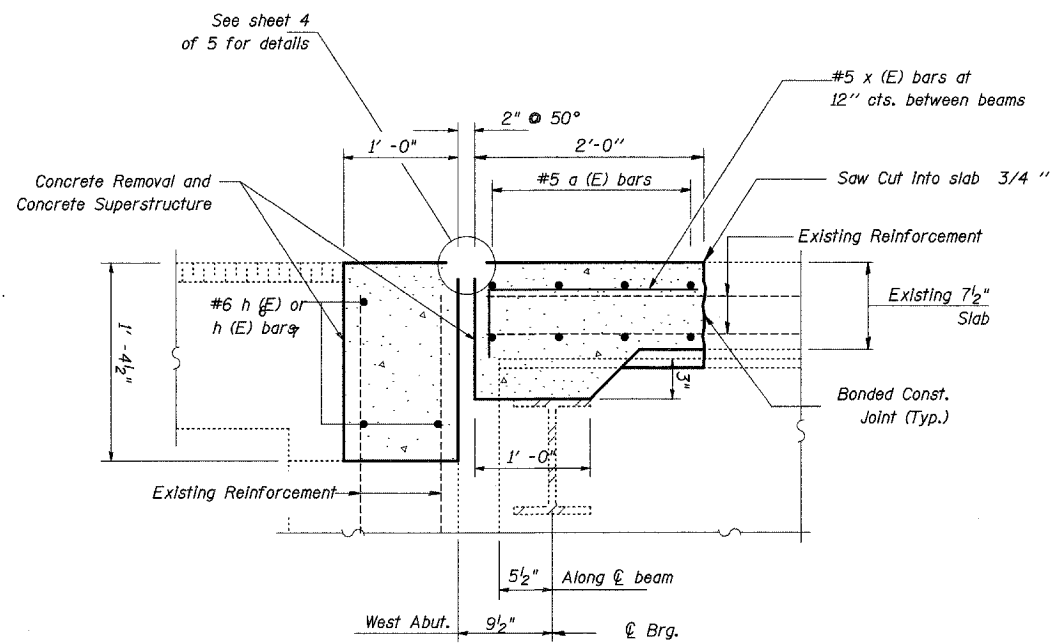
#4 d (E) BAR



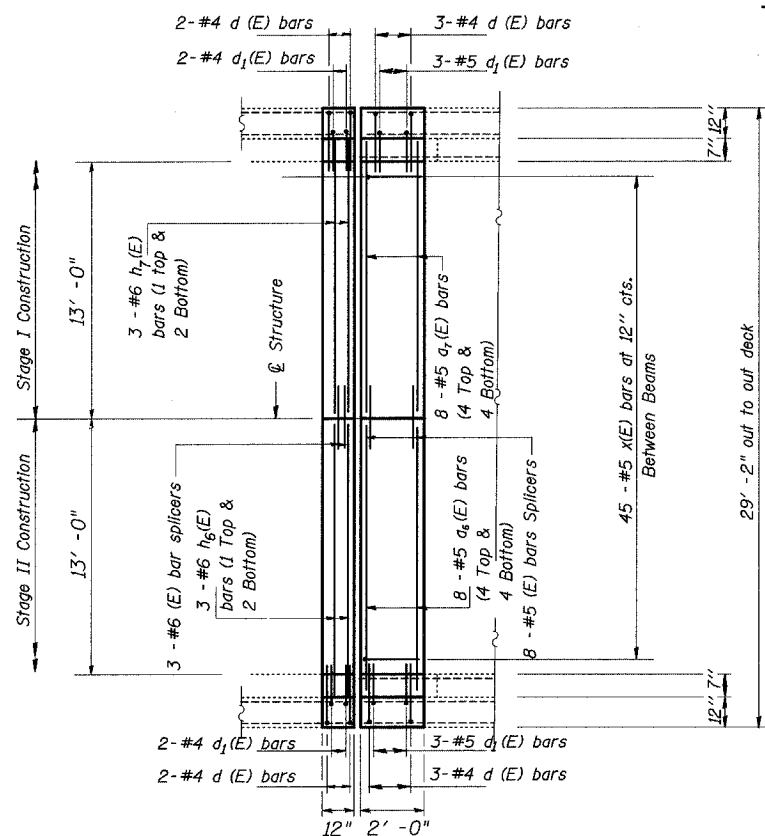
#5 d₁ (E) BAR



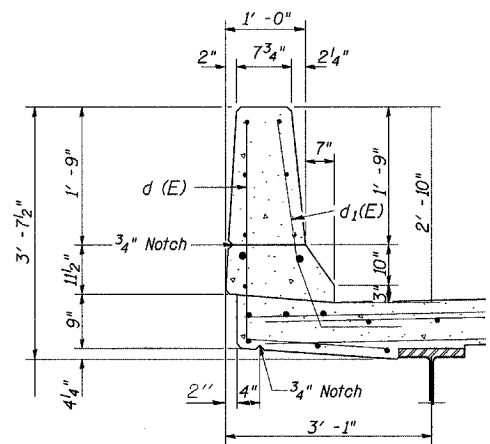
#5 x (E) BAR



SECTION THRU JOINT
(At West Abutment)



PROPOSED PARTIAL PLAN
(At West Abutment)



TYPICAL SECTION THRU PARAPET

Bill of Material

BAR	NO.	SIZE	LENGTH	SHAPE
a ₆ (E)	8	5	15' - 2"	—
a ₇ (E)	8	5	14' - 0"	—
d (E)	10	4	5' - 3"	J
d ₁ (E)	10	5	3' - 11"	J
h ₆ (E)	3	6	13' - 5"	—
h ₇ (E)	3	6	15' - 4"	—
x (E)	45	5	2' - 7"	—
CONCRETE SUPERSTRUCTURE			CU YD	4.0
CONCRETE REMOVAL			CU YD	4.0
REINFORCEMENT BARS, EPOXY COATED			POUND	570
PREFORMED JOINT STRIP SEAL			FOOT	30
BAR SPLICERS			EACH	11
REM REIN T B TERM T1			EACH	2

JOINT DETAILS
US 20 WB RAMP OVER SILVER CREEK
FA 401 (US 20)
SECTION 177-4B-3
STEPHENSON COUNTY
STRUCTURE NUMBER 089-0060

FILE NAME =	USER NAME = linkdj	DESIGNED -	REVISED -
D:\BR\CADD plans\Various Counties\Contract #64099 2008 expansion joints\02080208.dgn		DRAWN -	REVISED -
PLOT SCALE = 50.0000' / IN.		CHECKED -	REVISED -
PLOT DATE = Sat Mar 15 11:13:19 2008		DATE -	REVISED -

STATE OF ILLINOIS
DEPARTMENT OF TRANSPORTATION

Joint Details
 SCALE: None SHEET NO. 3 OF 5 SHEETS STA. TO STA.

F.A. RTE.	SECTION	COUNTY	TOTAL SHEETS	SHEET NO.
*	**	Various	26	24
ILLINOIS		CONTRACT NO. 64099		
FED. ROAD DIST. NO.		ILLINOIS FED. AID PROJECT		

* Various
 ** (106BR)M, (4B-2)M & 177-4B-3)M