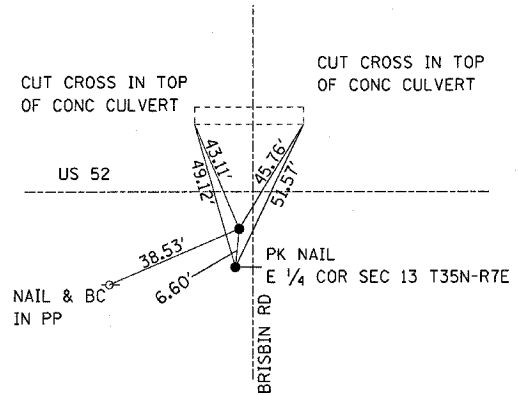
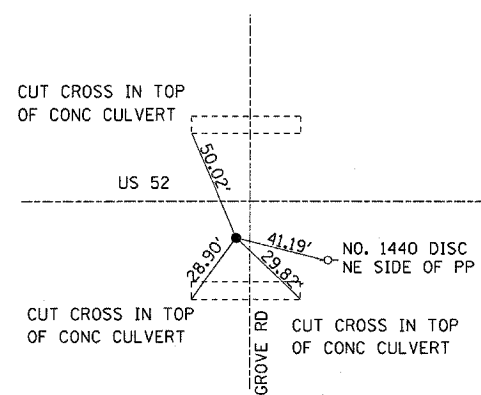


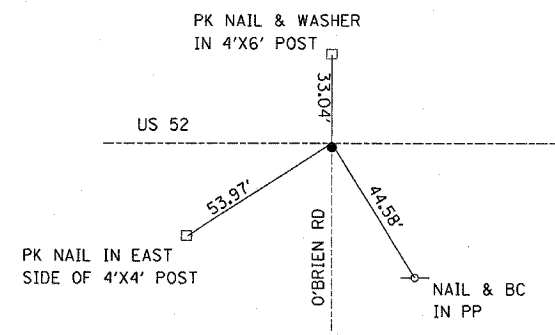
EAST QUARTER CORNER
SEC 16 T35N R7E THIRD PM KENDALL COUNTY
FOUND P.K. NAIL ±7.6' S. OF ϕ US 52



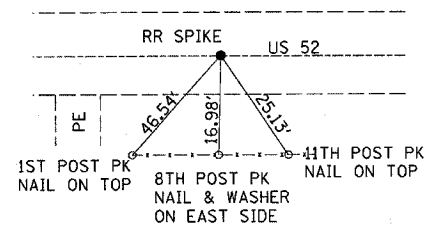
WEST QUARTER CORNER SECTION 18
T35N R8E THIRD PM KENDALL COUNTY
FOUND BRASS DISK ±6.6' S OF ϕ US 52



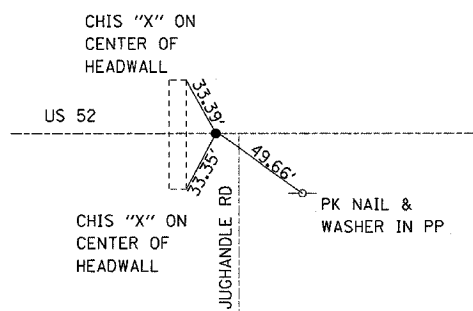
EAST QUARTER CORNER SECTION 18
T35N R8E THIRD PM KENDALL COUNTY
FOUND BRASS DISK ±11.5' S OF ϕ US 52



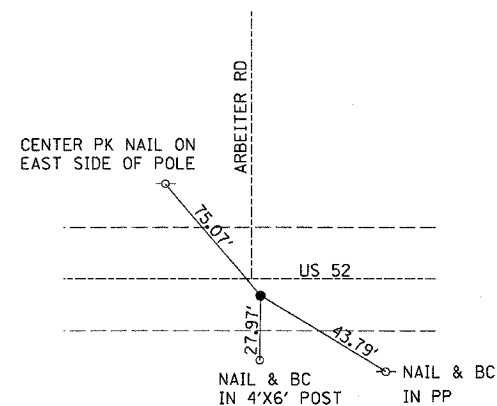
WEST QUARTER CORNER SECTION 16
T35N R8E THIRD PM KENDALL COUNTY
FOUND BRASS DISK ±1.5 S OF ϕ US 52



EAST QUARTER CORNER
SEC 16 T35N R8E THIRD PM KENDALL COUNTY
FOUND RR SPIKE ON ϕ US 52



CENTER OF SECTION 15
T35N R8E THIRD PM KENDALL COUNTY
FOUND BRASS DISK ON ϕ US 52



EAST QUARTER CORNER SECTION 15
T35N R8E THIRD PM KENDALL COUNTY
FOUND BRASS DISK ±3.0' S. OF ϕ US 52

FILE NAME =
c:\projects\ed06204\allshets.dgn

USER NAME = duncanbd
PLOT SCALE = 50.000' / IN.
PLOT DATE = Mar 18, 2008 - 10:31:24 AM

DESIGNED -
DRAWN -
CHECKED -
DATE -

REVISED -
REVISED -
REVISED -
REVISED -

STATE OF ILLINOIS
DEPARTMENT OF TRANSPORTATION

TIE POINTS

SCALE: SHEET NO. OF SHEETS STA. TO STA.

F.A.P. RTE.	SECTION	COUNTY	TOTAL SHEETS	SHEET NO.
607	(129,130)RS-3	KENDALL	9	6
FED. ROAD DIST. NO. ILLINOIS FED. AID PROJECT			CONTRACT NO. 66749	