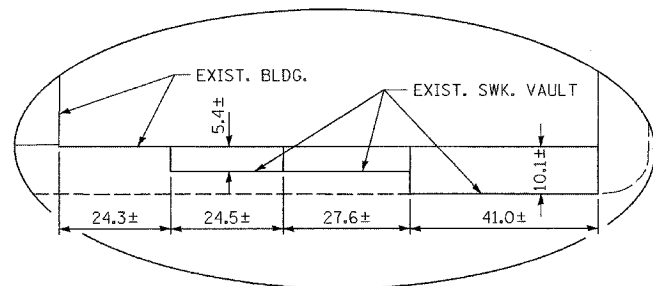
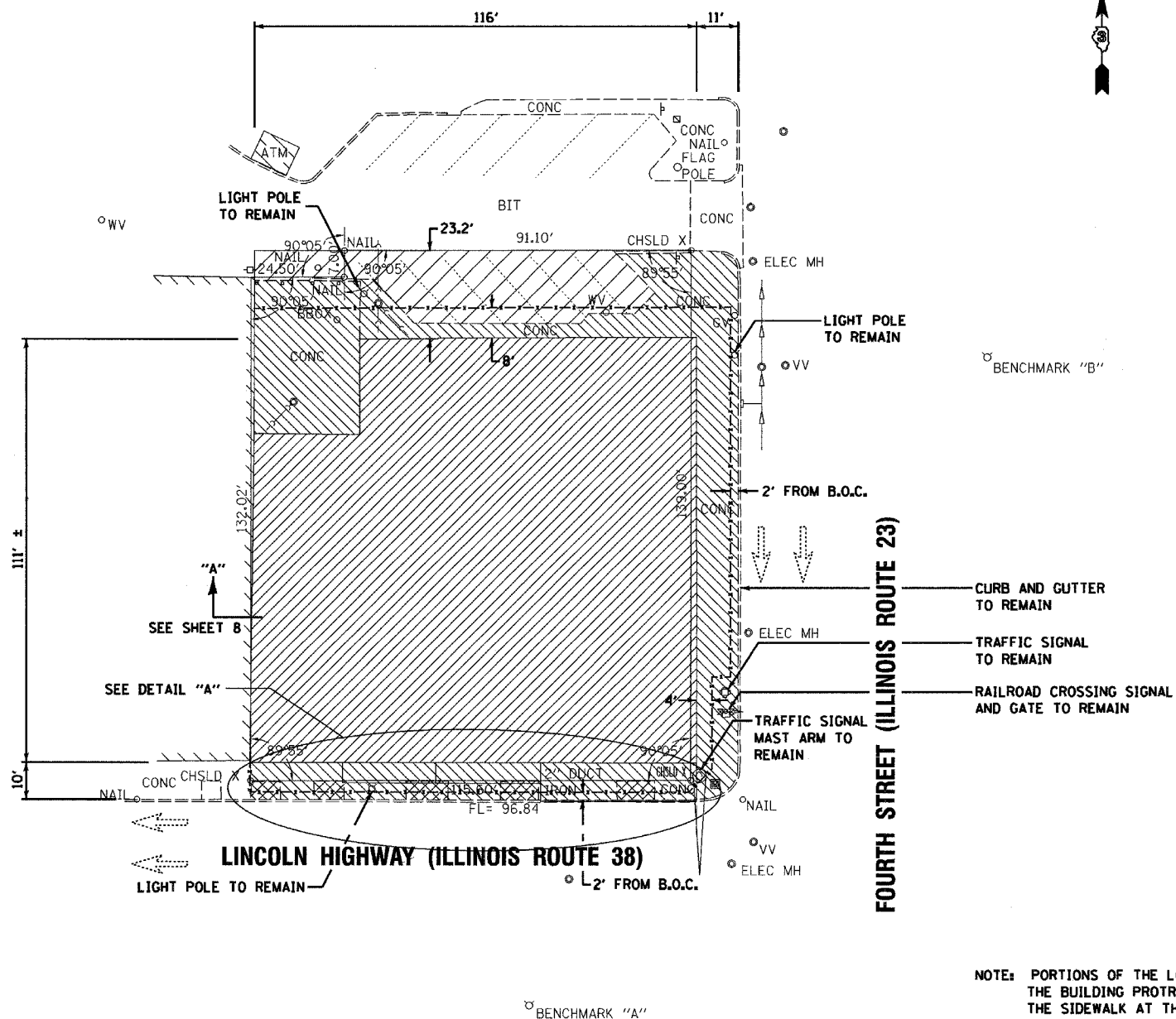
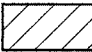



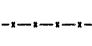


F.A.P. RTE.	SECTION	COUNTY	TOTAL SHEETS	SHEET NO.
324	(7) DM	DEKALB	24	4
STA.		TO STA.		
FED. ROAD DIST. NO. 3		ILLINOIS FED. AID PROJECT		

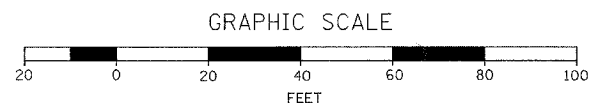


DETAIL "A"



-  HOT-MIX ASPHALT SURFACE REMOVAL, SPECIAL (163 SQ YD)
-  SIDEWALK REMOVAL (4344 SQ FT)
-  REMOVE AND RELAY BRICK SIDEWALK (228 SQ FT)
-  BUILDING REMOVAL NO. 1 (1 L SUM)
-  TEMPORARY CHAIN LINK FENCE (383 FOOT)

NOTE: PORTIONS OF THE LOWER LEVEL OF THE BUILDING PROTRUDE UNDER THE SIDEWALK AT THE SOUTH WALL.



REVISIONS	
NAME	DATE

ILLINOIS DEPARTMENT OF TRANSPORTATION
 DEMOLITION PLAN
 FAP 324 (IL 23)
 SECTION (7) DM
 DEKALB COUNTY

SCALE: VERT. HORIZ.
 DATE: DRAWN BY A.R.R.
 CHECKED BY J.K.C.

PLOT DATE = 4/07
 PLOT NAME = 706668-DEMOLITION
 PLOT SCALE = AS NOTED
 USER NAME = ARR