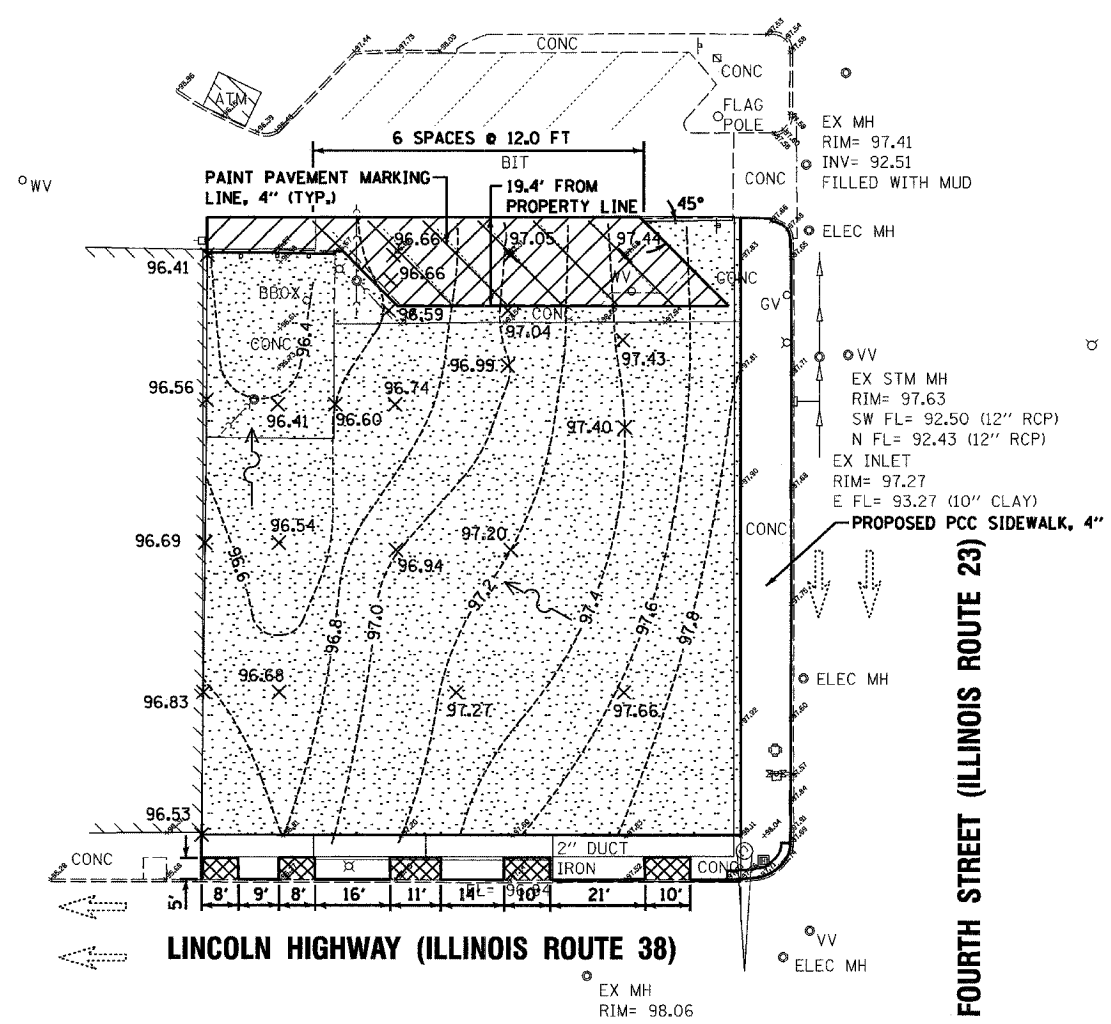

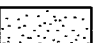



F.A.P. RTE.	SECTION	COUNTY	TOTAL SHEETS	SHEET NO.
324	(7) DM	DEKALB	24	5
STA.		TO STA.		
FED. ROAD DIST. NO. 3		ILLINOIS FED. AID PROJECT		

EX INLET
RIM= 93.15

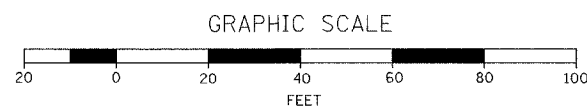


-  INCIDENTAL HOT-MIX ASPHALT SURFACING (29.7 TON)
-  SUB-BASE GRANULAR MATERIAL, TYPE B, 6" (1560 SQ YD)
-  REMOVE AND RELAY BRICK SIDEWALK (SEE SHEET 4)

• INCLUDED IN THE COST FOR BUILDING REMOVAL NO. 1 (SEE SPECIAL PROVISIONS)

LINCOLN HIGHWAY (ILLINOIS ROUTE 38)

FOURTH STREET (ILLINOIS ROUTE 23)



REVISIONS	
NAME	DATE

ILLINOIS DEPARTMENT OF TRANSPORTATION
 GRADING PLAN
 FAP 324 (IL 23)
 SECTION (7) DM
 DEKALB COUNTY

SCALE: VERT. _____
 HORIZ. _____
 DATE _____

DRAWN BY A.R.R.
 CHECKED BY J.K.C.

PLOT DATE = 4/97
 FILE NAME = 726106-CRANEDON
 PLOT SCALE = AS NOTED
 USER NAME = AIRR