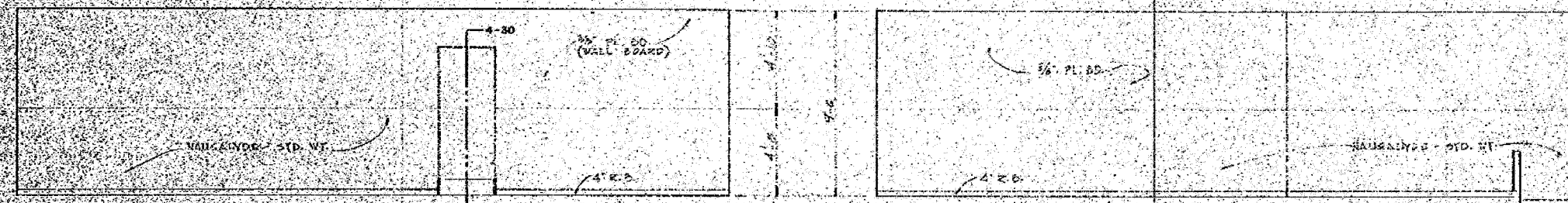
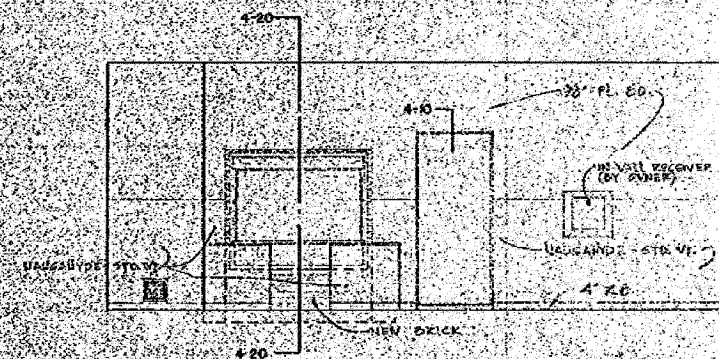


F.A.P. RTE.	SECTION	COUNTY	TOTAL SHEETS	SHEET NO.
324	(7) DM	DEKALB	24	16
STA.		TO STA.		
FED. ROAD DIST. NO. 3		ILLINOIS FED. AID PROJECT		

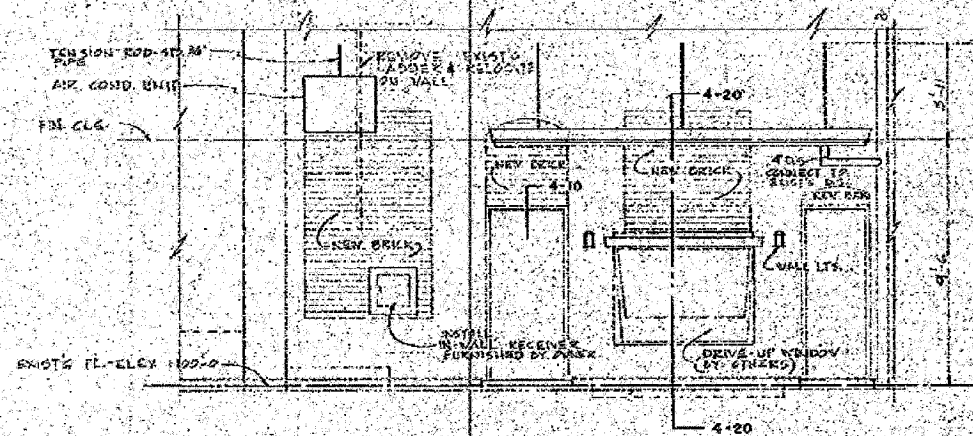


INTERIOR ELEVATION - EAST
SCALE: 1/4" = 1'-0"

INTERIOR ELEVATION - WEST
SCALE: 1/4" = 1'-0"



INTERIOR ELEVATION - NORTH
SCALE: 1/4" = 1'-0"



EXTERIOR ELEVATION - NORTH
SCALE: 1/4" = 1'-0"

REVISION	ADDITIONS AND ALTERATIONS TO THE	JOB	SHEET
	DE KALB TRUST AND SAVINGS BANK	5831-A	A-5
	DE KALB	SCALE: 1/4" = 1'-0"	DRAWN BY: J.C.
	ILLINOIS	DATE: 3-23-59	
	WALTER E. FOSS - BANK DESIGNERS		
	53 SOUTH CLARK STREET		
	CHICAGO 3		
	ILLINOIS		DRAWING 59014

VERIFY DIMENSIONS.

PLOT DATE = 7/87
PLOT SCALE = AS NOTED
USER NAME = ARR

FOR INFORMATION ONLY

REVISIONS	
NAME	DATE

ILLINOIS DEPARTMENT OF TRANSPORTATION
EXISTING PLAN
FAP 324 (IL 23)
SECTION (7) DM
DEKALB COUNTY
SCALE: VERT. DRAWN BY A.R.R.
 HORIZ. CHECKED BY J.K.C.
DATE