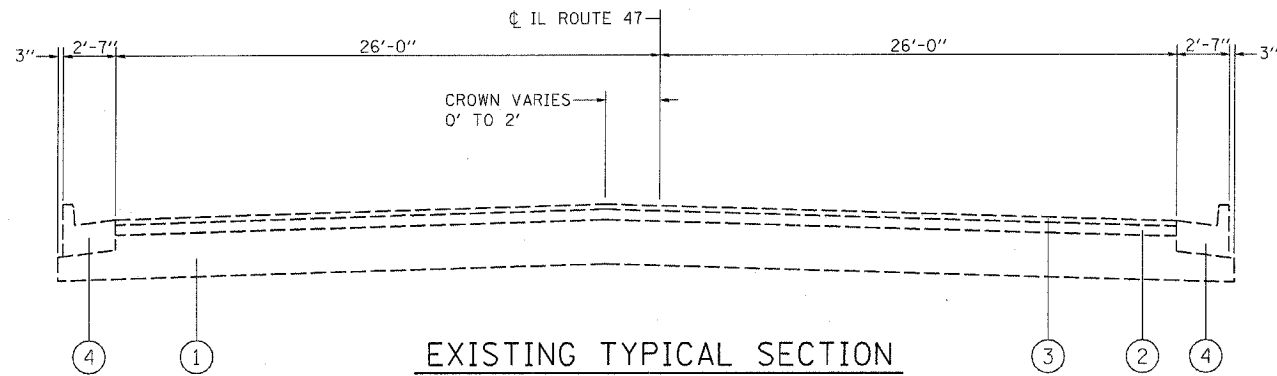
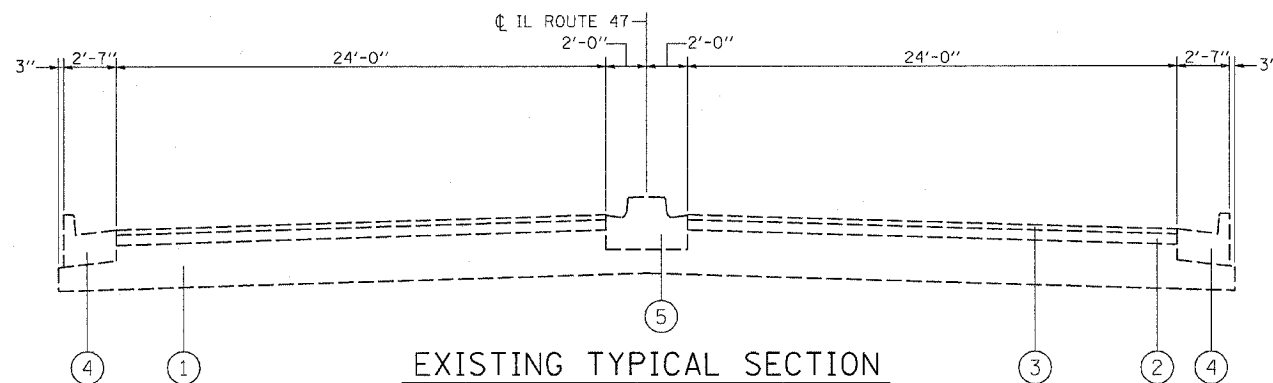


F.A.P. RTE.	SECTION	COUNTY	TOTAL SHEETS	SHEET NO.
326	(111CS) W&RS-21	GRUNDY	85	13
STA. TO STA.		FED. ROAD DIST. NO. - ILLINOIS FED. AID PROJECT		



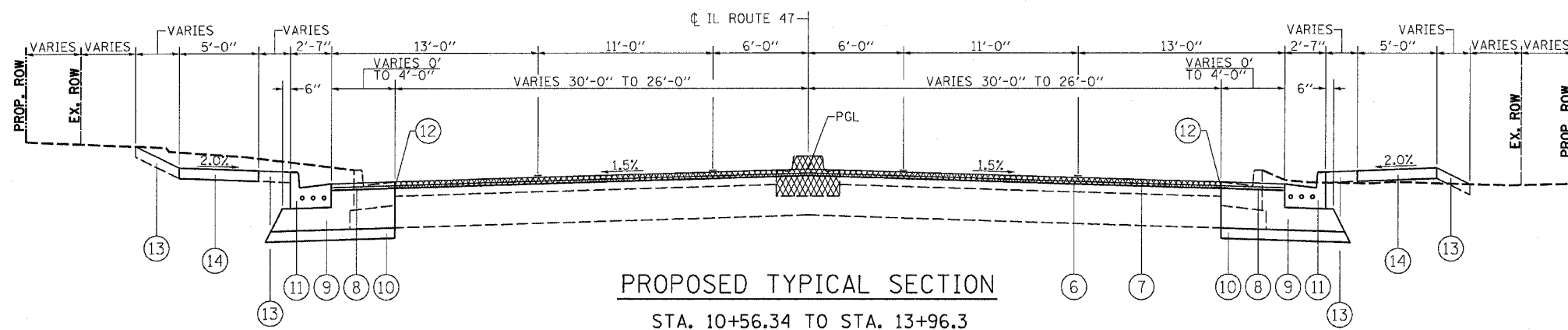
EXISTING TYPICAL SECTION

STA. 10+56.34 TO STA. 28+20.1



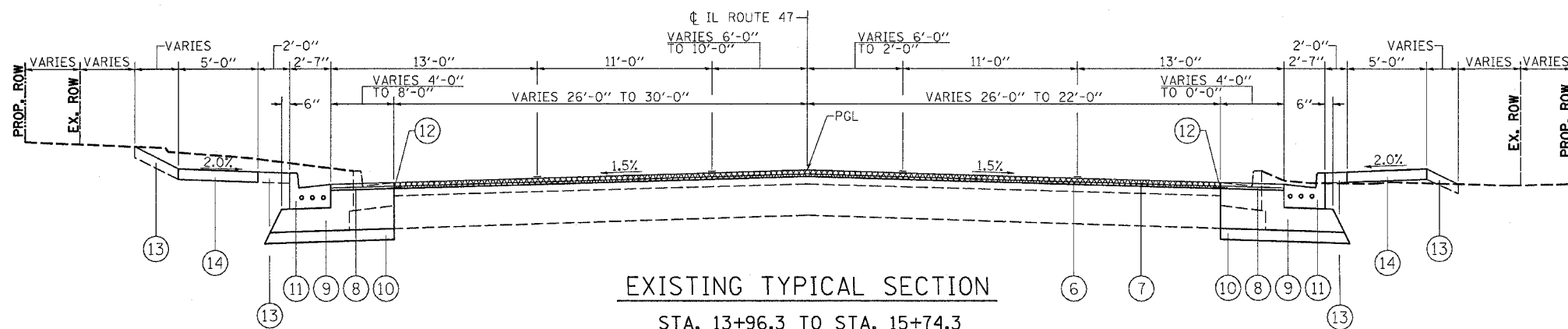
EXISTING TYPICAL SECTION

STA. 28+20.1 TO STA. 31+10.0



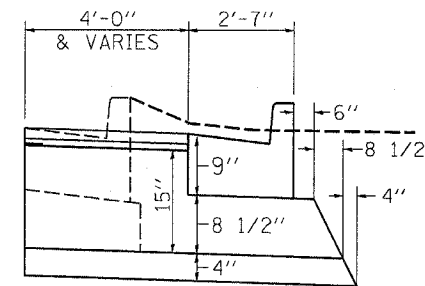
PROPOSED TYPICAL SECTION

STA. 10+56.34 TO STA. 13+96.3
STA. 21+34.9 TO STA. 29+10.0



EXISTING TYPICAL SECTION

STA. 13+96.3 TO STA. 15+74.3
STA. 19+74.9 TO STA. 21+34.9



WIDENING DETAIL
(REBAR OMITTED FROM C&G FOR CLARITY)

LEGEND

- ① EXISTING 13" BITUMINOUS BASE COURSE
- ② EXISTING 3" BITUMINOUS BINDER COURSE
- ③ EXISTING 1 1/2" BITUMINOUS CONCRETE SURFACE COURSE
- ④ EXISTING COMBINATION CONCRETE CURB AND GUTTER TY. B - 6.24
- ⑤ EXISTING CONCRETE MEDIAN TY. SB - 6.12 *
- ⑥ HMA SURFACE REMOVAL, VARIABLE DEPTH **
- ⑦ PROPOSED 1 1/2" HMA SURFACE COURSE
- ⑧ PROPOSED 1" LEVELING BINDER COURSE
- ⑨ PROPOSED HMA BASE CSE. WID., VARIABLE DEPTH ***
- ⑩ PROPOSED SUB-BASE GRANULAR MATERIAL, TYPE A 4"
- ⑪ PROPOSED COMBINATION CONCRETE CURB AND GUTTER TY. B - 6.24
- ⑫ STRIP REFLECTIVE CRACK CONTROL TREATMENT
- ⑬ TOPSOIL FURNISH AND PLACE, 4" (TYP.)
- ⑭ PROPOSED PCC SIDEWALK 4"

* RAISED MEDIAN STA. 28+20.1 TO 31+10.0 TO BE REMOVED

** VARIABLE DEPTH MILLING (2.5" AVG.) TO BE USED TO RELOCATE CROWN TO MIDDLE OF ROADWAY AS NECESSARY (SEE CROSS SECTIONS FOR EXISTING CROWN LOCATION)

*** THE TOP LIFT OF BASE COURSE WIDENING SHALL BE A POLYMERIZED HMA IL 19.0 N90 BINDER MIX - MINIMUM THICKNESS OF 2 1/4".

REVISIONS	
NAME	DATE

ILLINOIS DEPARTMENT OF TRANSPORTATION
EXISTING AND PROPOSED
TYPICAL SECTIONS
IL ROUTE 47
GRUNDY COUNTY

SCALE: NTS
DATE: 08/2007

DRAWN BY: KHH
CHECKED BY: FML