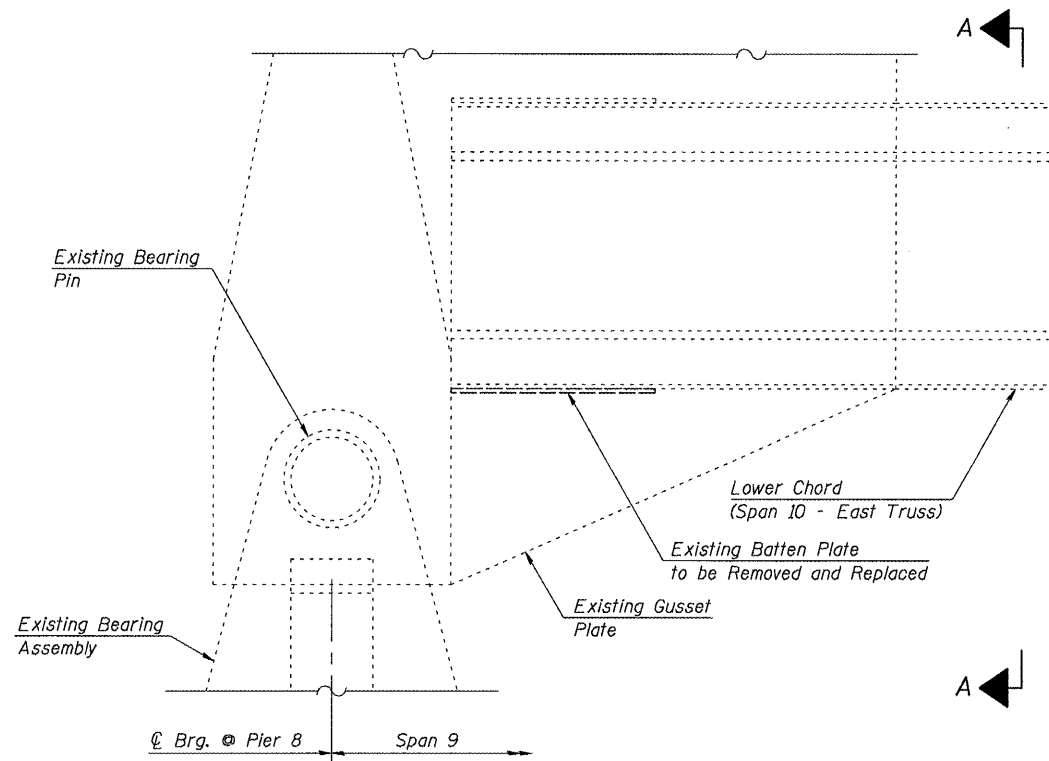


STATE OF ILLINOIS
DEPARTMENT OF TRANSPORTATION

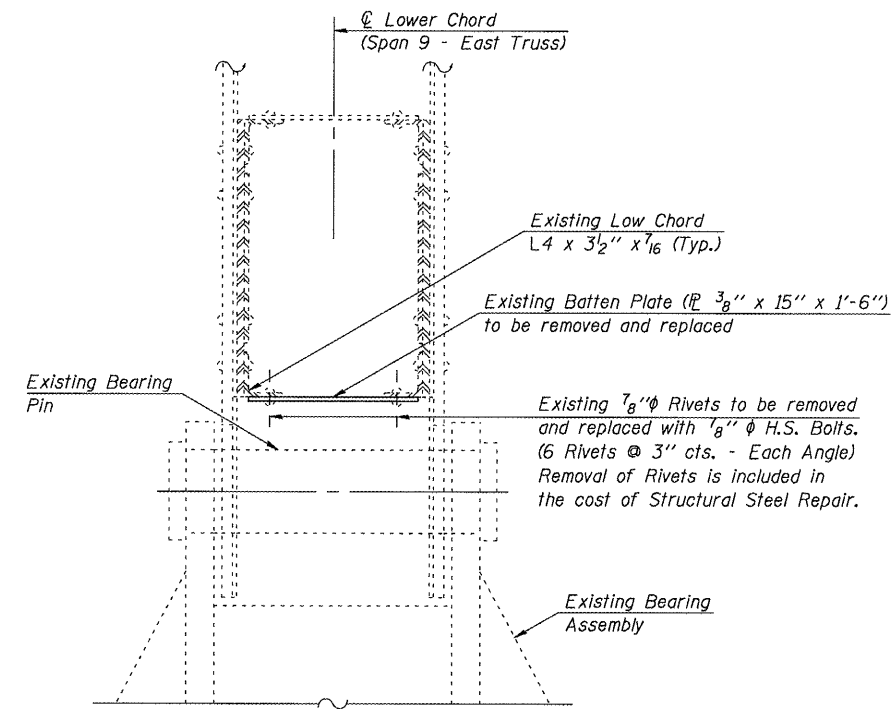
ROUTE NO.	SECTION	COUNTY	TOTAL SHEETS	SHEET NO.
FAP 698 (IL 89)	(IB-D) I-2	BUREAU/ PUTNAM	8	6
FED. ROAD DIST. NO. 7	ILLINOIS	CONTRACT NO. 66727		

SHEET NO. 2
OF 4 SHEETS

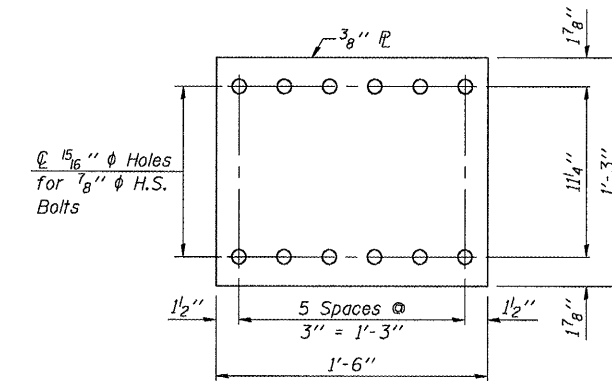


ELEVATION
(Looking East)

Note: Rivets not shown in this view.



SECTION A-A
(Looking North)



BATTEN PLATE DETAILS
Hole in Batten Plate shall be subpunched or subdrilled $\frac{13}{16}$ " ϕ and reamed in the field to $\frac{15}{16}$ " ϕ for $\frac{7}{8}$ " ϕ bolts.

DESIGNED	J.A.M.	200
CHECKED	A.R.K.	EXAMINED
DRAWN	S.A.P.	PASSED
CHECKED	A.R.K. & J.A.M.	ENGINEER OF BRIDGES AND STRUCTURES

BATTEN PLATE REPAIR DETAILS
SPRING VALLEY BRIDGE OVER ILLINOIS RIVER
F.A.P. 698 (IL 89) SEC. (IB-D)I-2
BUREAU/PUTNAM COUNTIES
S.N. 078-0006