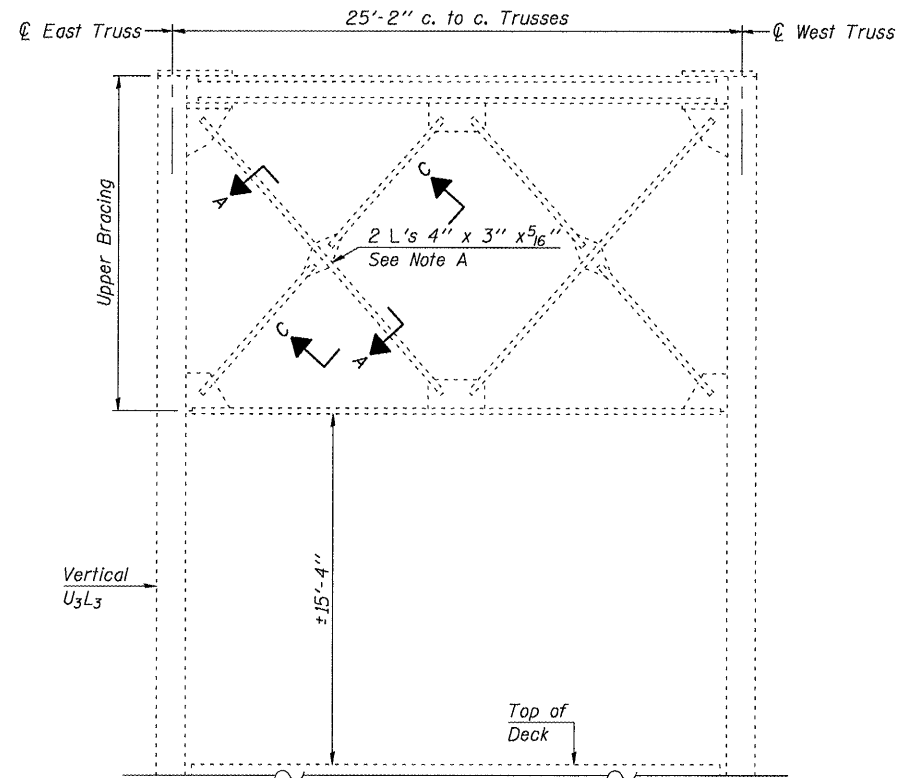


STATE OF ILLINOIS
DEPARTMENT OF TRANSPORTATION

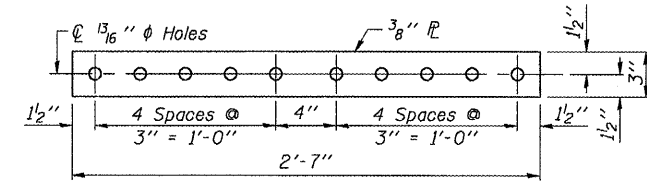
ROUTE NO.	SECTION	COUNTY	TOTAL SHEETS	SHEET NO.
FAP 698 (IL 89)	(IB-D) I-2	BUREAU/ PUTNAM	8	8
FED. ROAD DIST. NO. 7	ILLINOIS	CONTRACT NO. 66727		

SHEET NO. 4
OF 4 SHEETS

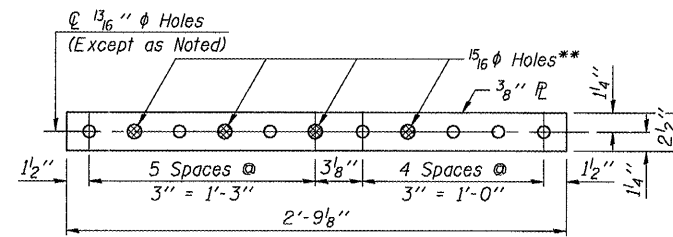


SECTION THRU SPAN 10 SHOWING DIAGONAL BRACING
NEAR VERTICAL U3L3
(Looking South)

Note "A": The horizontal leg of both existing angles (L4x3x5/16) are cracked for the total thickness and length of the outstanding horizontal leg.

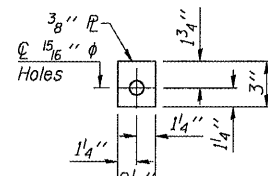


SPLICE PLATE "A"
(2 Required)

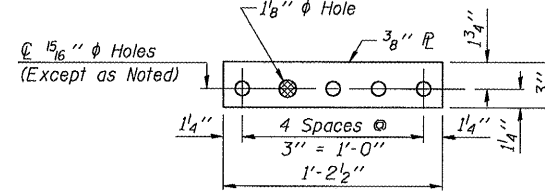


SPLICE PLATE "B"
(2 Required)

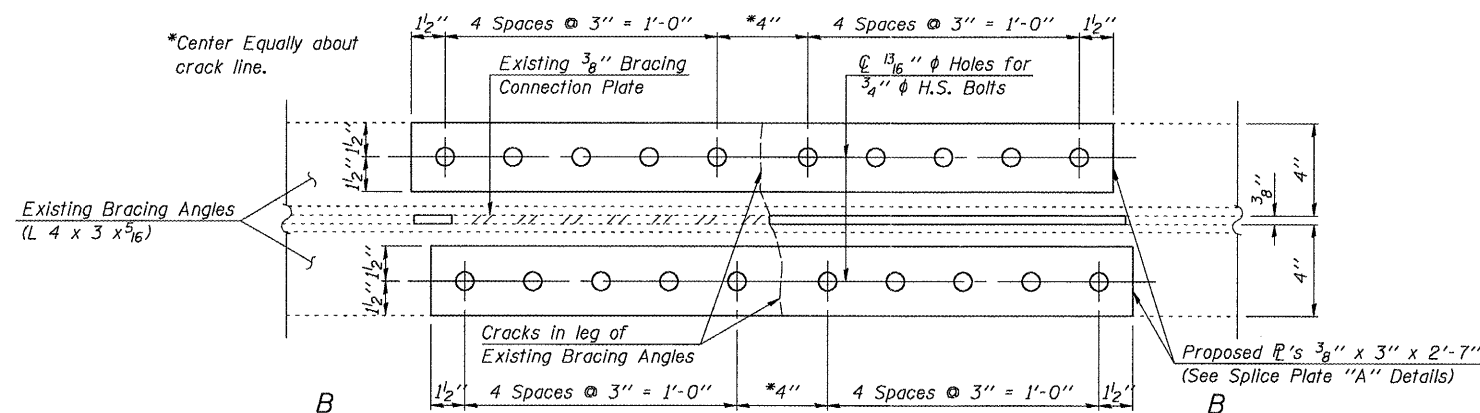
**15/16" ϕ holes in Splice Plate "B" shall be subpunched or subdrilled 13/16" ϕ and reamed in the field to 15/16" ϕ for 7/8" ϕ bolts.



FILL PLATE "C"
(1 Required)



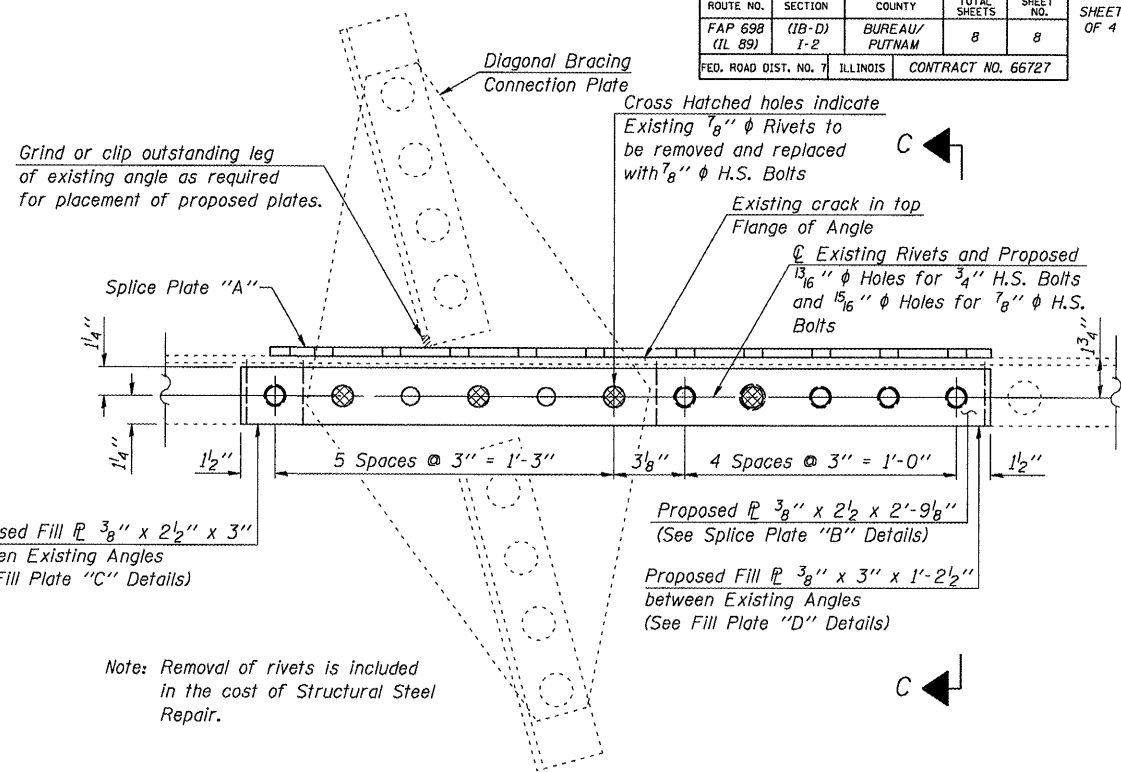
FILL PLATE "D"
(1 Required)



SECTION A-A

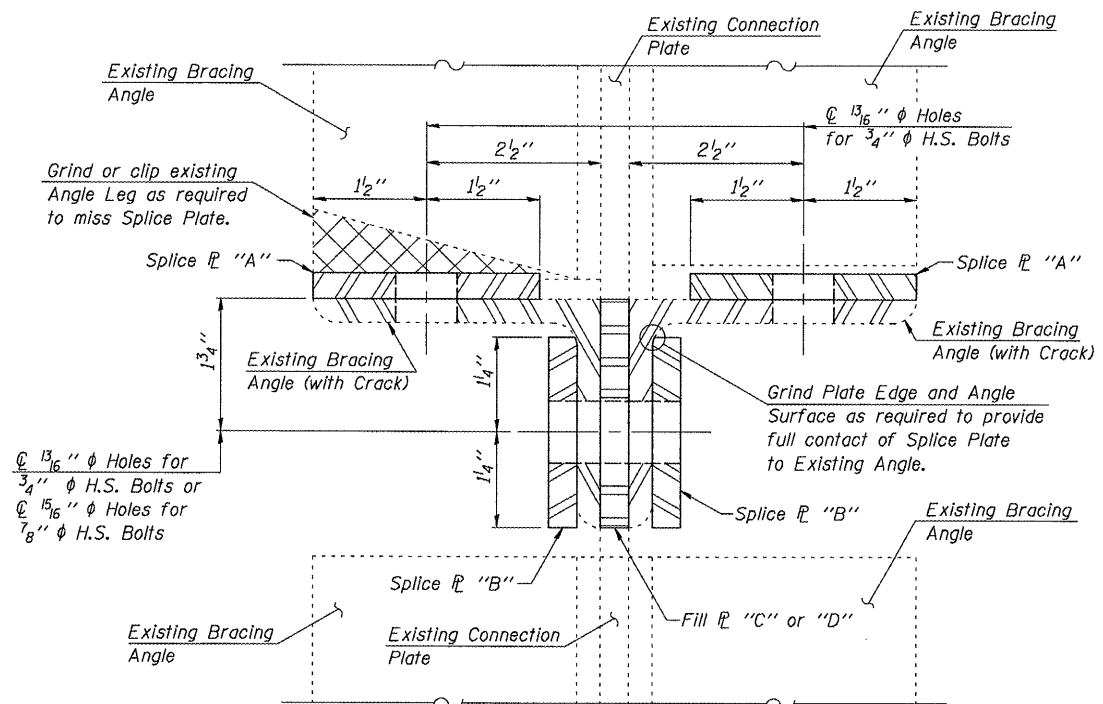
(Looking Downward at Top of Angles of Diagonal Bracing)

(Splice Plates for vertical legs of Bracing Angles and Fill Plates between Bracing Angles not shown. See View B-B.)



VIEW B-B
(Looking South)

Note: Removal of rivets is included in the cost of Structural Steel Repair.



SECTION C-C

BRACING REPAIR DETAILS
SPRING VALLEY BRIDGE OVER ILLINOIS RIVER
F.A.P. 698 (IL 89) SEC. (IB-D)I-2
BUREAU/PUTNAM COUNTIES
S.N. 078-0006

DESIGNED	J.A.M.	200
CHECKED	A.R.K.	ENGINEER OF BRIDGE DESIGN
DRAWN	S.A.P.	PASSED
CHECKED	A.R.K. & J.A.M.	ENGINEER OF BRIDGES AND STRUCTURES